

# LILIA CARDOZO

Cancer Hospital Retreat &  
Residence for Patients' Families

DES 482.01

Advanced Interior Design II

Professor: Meirav Goldhour

Andrea Cardozo



# Cancer Association Of Patients and Families

**On July 20, 2018**, cancer patients and relatives gather to create the association.

**Vision:** Bring people together for a better quality of life by receiving medical attention.

**Mission:** Ensure the interests of cancer patients as human beings and with the objective of become an ally of the institutions that provide health services to cancer patients.

## Goals:

- Protect the rights of cancer patients as an active part in the fight against it.
- Inform, support and accompany the patients and their families, raising awareness in society of the need to act against this disease.
- Manage the necessary means to improve the quality of life of the cancer patients and their families.
- Non-profit association

Among the most outstanding achievements of APACFA stands out the fact of having achieved that the National Congress sanction Law No. 6,266 OF **INTEGRAL ATTENTION TO THE PEOPLE WITH CANCER**. This is the result of hard work by APACFA. As APACFA is a non-profit association, everything received in donation issues distributed among cancer patients most in need.

# Concept Statement

The **Lilia Cardozo** Cancer Hospital Retreat & Residence for Patients' Families is a new short-term hospitality and recreation center. The Retreat & Residence is located at the Hospital National of Cancer in South America, **Paraguay**, and its goal is to give the patient's family a calm space to spend the night. The residence and the recreation center will embrace the concept of indoor-outdoor living by including large windows and using natural materials such as wood, stone, plants, and other biophilic elements. In addition, solar light and energy efficiency features will take place. Neutral color schemes are used throughout the residence and recreation center to maintain a calm and relaxing atmosphere for the families' overnight stay. Cancer patient care is challenging and requires many sacrifices. As a family member who has gone through this experience, we always have to smile and give our best to our loved ones; therefore, the project will help families start their day with the most energy.

# Location

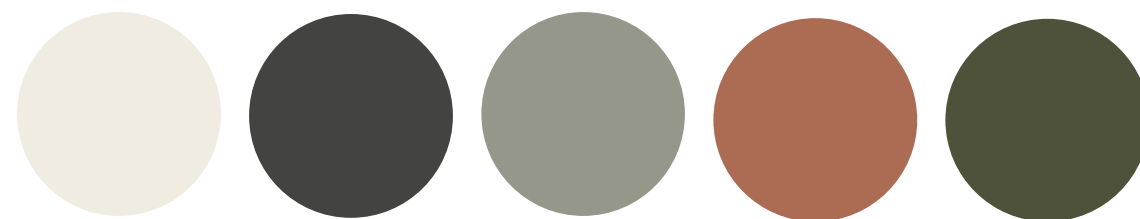


# Inspiration

Klein A45



COLOR SCHEME



# Lilia Cardozo's Project



Lobby Exterior Perspective Rendering



A-Frame Exterior Perspective Rendering



Two Stories Exterior Perspective Rendering

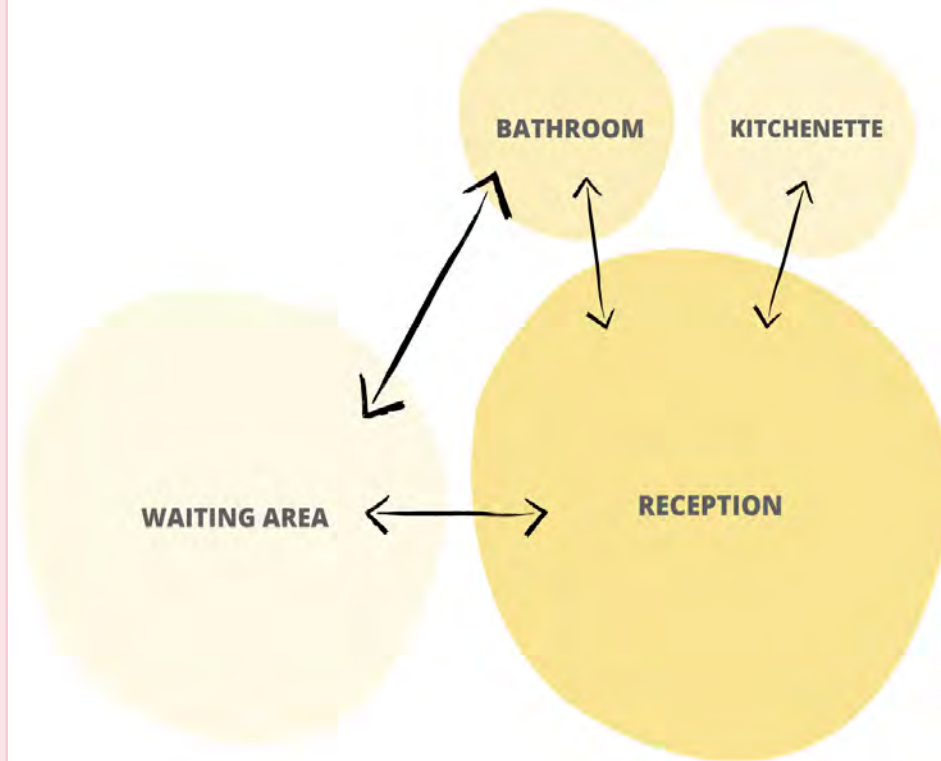


Salon & Cafe Exterior Perspective Rendering

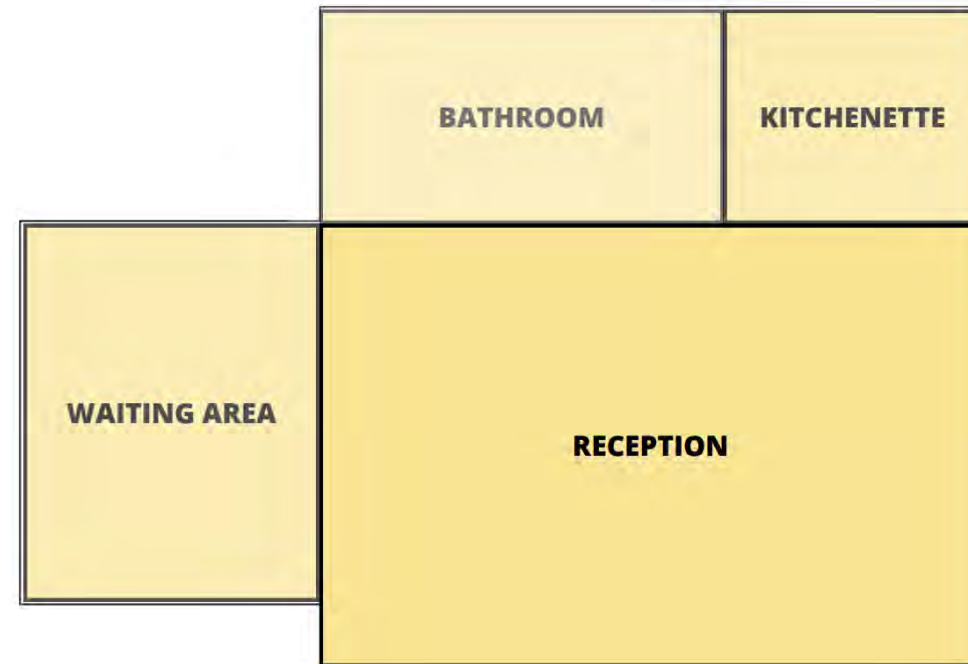
# Lobby

## Process Work

Bubble Diagram



Blocking Diagram



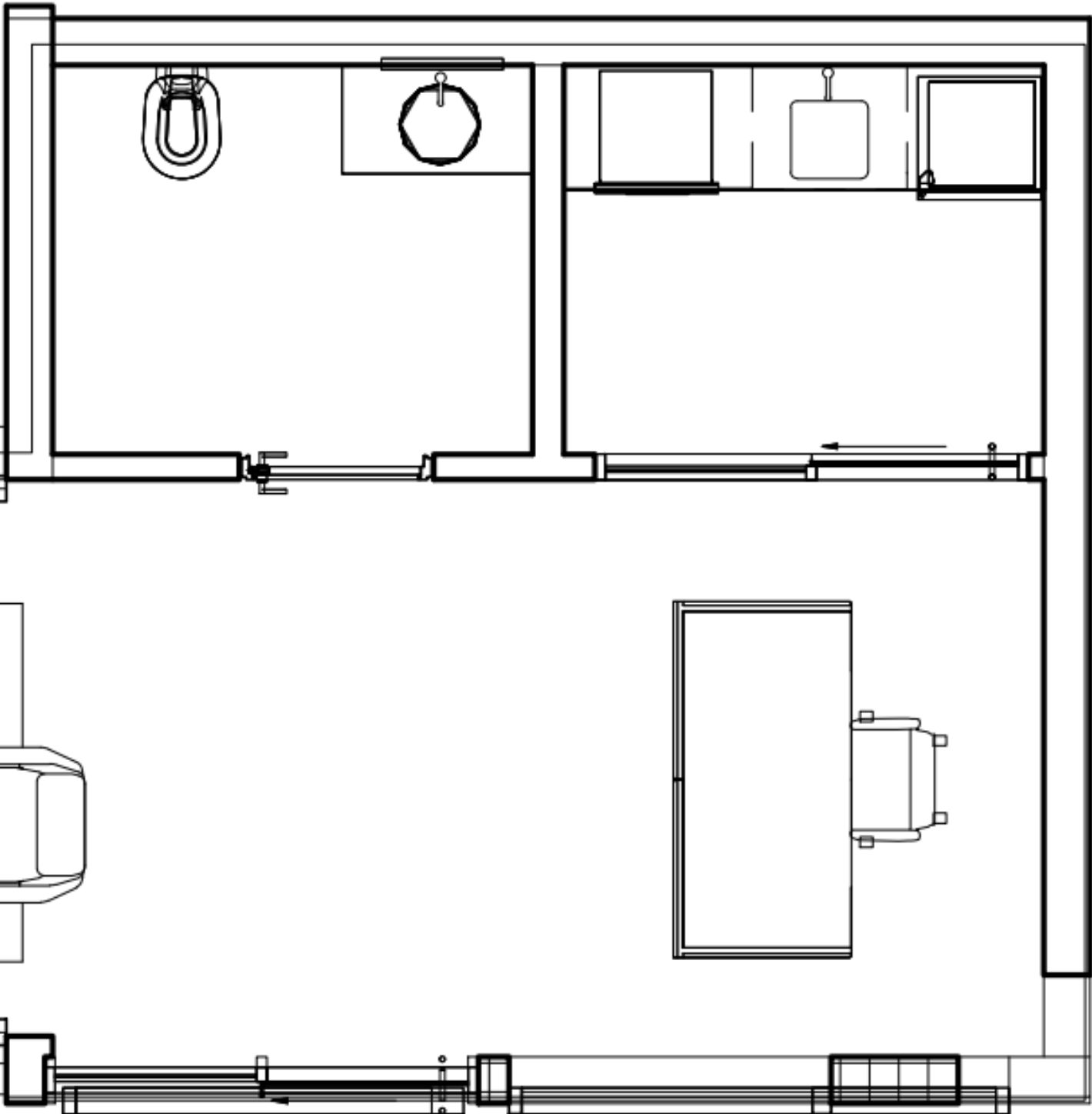
Criteria Matrix

Criteria Matrix For: Lobby		SQ. FOOTAGE NEEDS	ADJACENCIES	PUBLIC ACCESS	DAYLIGHT AND/OR VIEWS	PRIVACY	PLUMBING	SPECIAL EQUIPMENT	SPECIAL CONSIDERATIONS
①	RECEPTION	120	②④	H	Y	N	N	N	ADJACENT TO MAIN ENTRANCE
②	WAITING AREA	90	①③	H	Y	N	N	N	OUTSIDE AND INSIDE VIEW
③	RESTROOM	50	②④	M	N	Y	Y	N	ADA ACCESSIBLE
④	KITCHENETTE	50	①③	L	Y	N	Y	Y	FOR EMPLOYEES ONLY

TOTAL SQ. FOOTAGE: 310

LEGEND	
H - HIGH	● - PRIMARY ADJACENCY
M - MEDIUM	○ - SECONDARY ADJACENCY
L - LOW	+ - DISTANT ADJACENCY
Y - YES	= - NO ADJACENCY
N - NO	
I - IMPORTANT BUT NOT REQUIRED	

# Floor Plan



**Fritz Hansen**  
Oxford Office Chair



**Isomi**  
Lintel Desk

**Teknion**  
Lasai

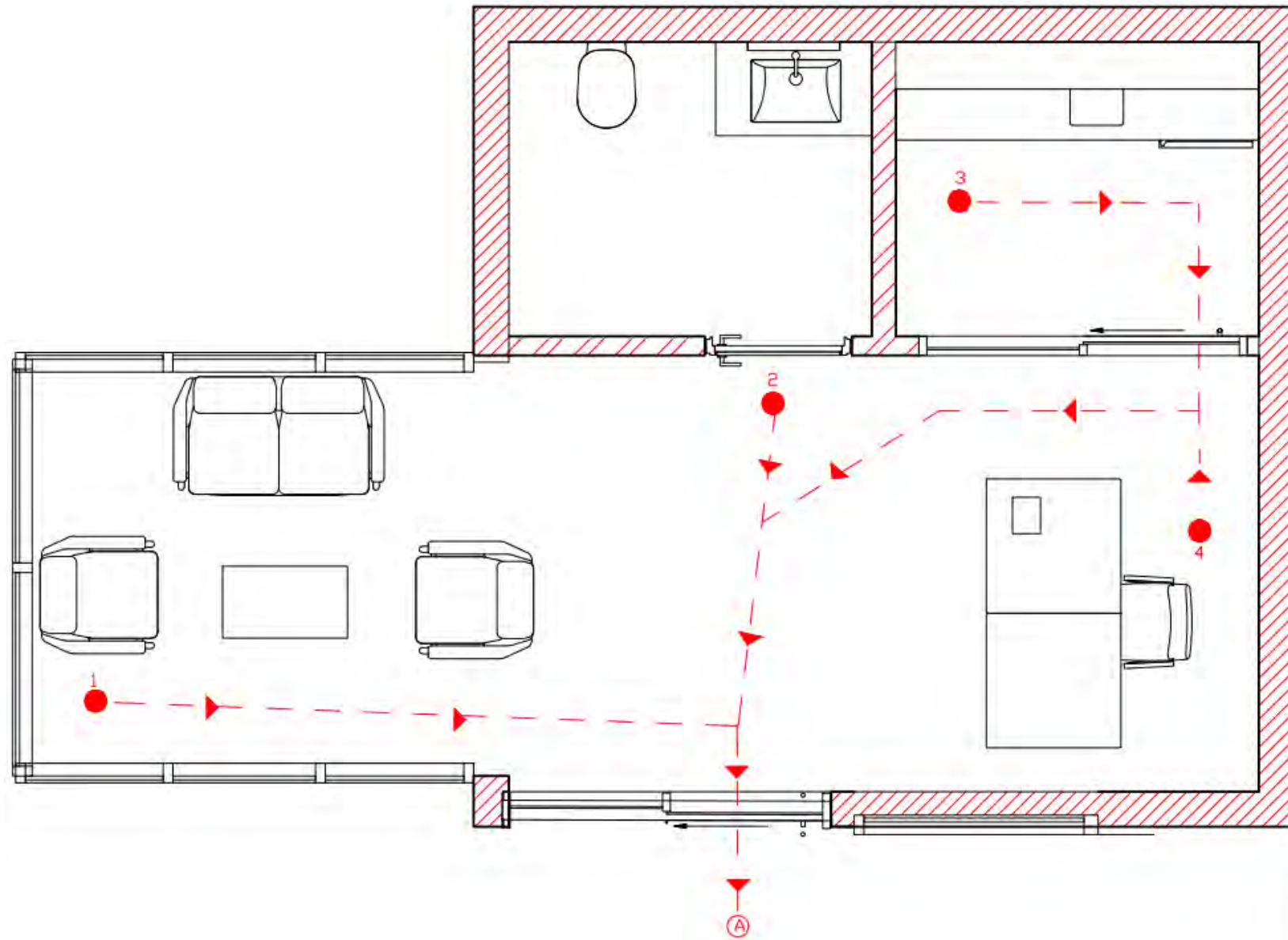


① LOBBY - FLOOR PLAN

SCALE: 1/4" = 1' - 0"



# Life Safety Plan



LEGEND	
A= EXIT 1	A1= 13'
1= MOST REMOTE POINT	A2= 10'
2= MOST REMOTE POINT	A3= 25'
3= MOST REMOTE POINT	A4= 26'
4= MOST REMOTE POINT	

① LOBBY - LIFE SAFETY PLAN

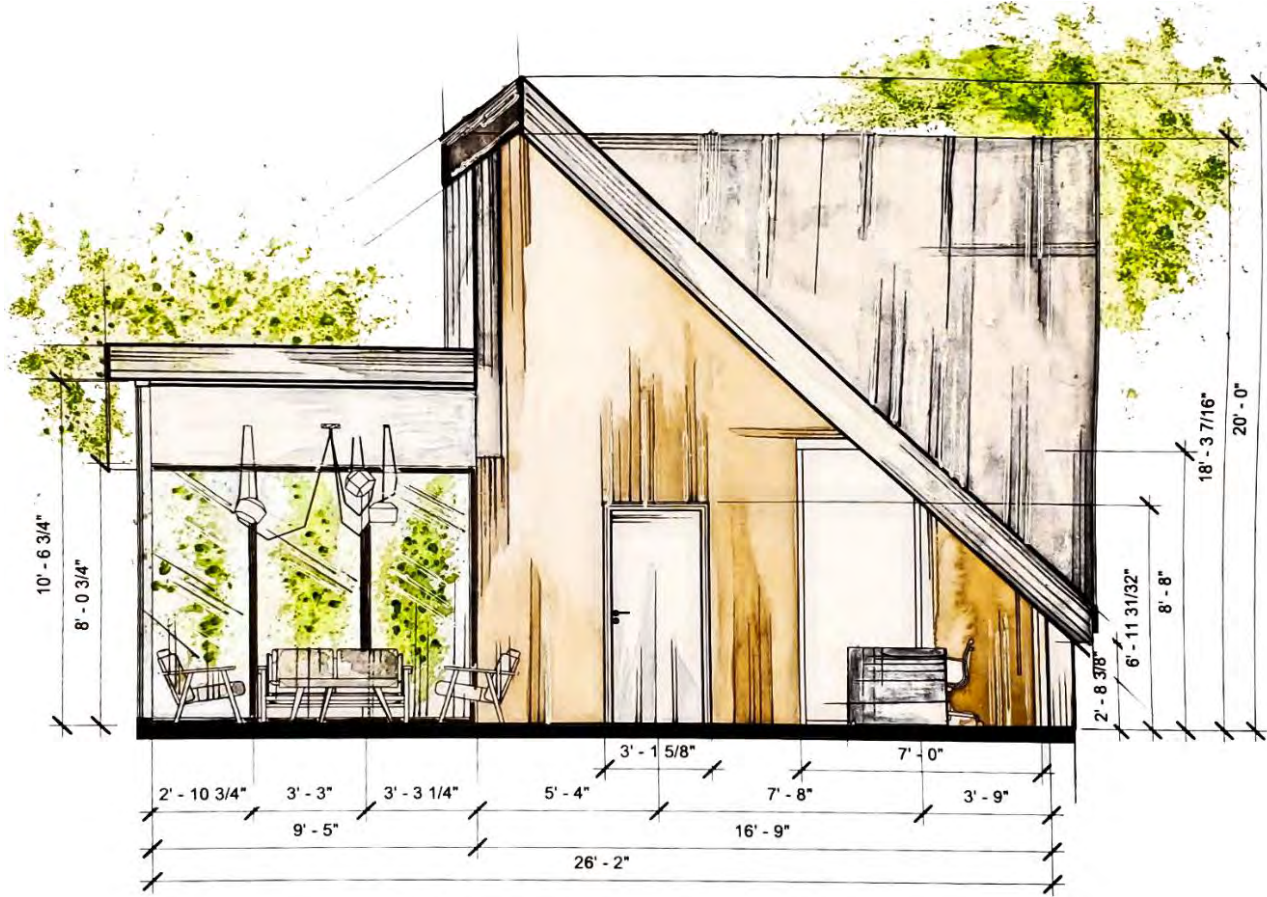
SCALE: 1/4" = 1' - 0"  
0 1' 2' 4' 10'

- Maximum travel Distance= 75' feet
- \*IBC allows 30' feet if two egress pathways are present



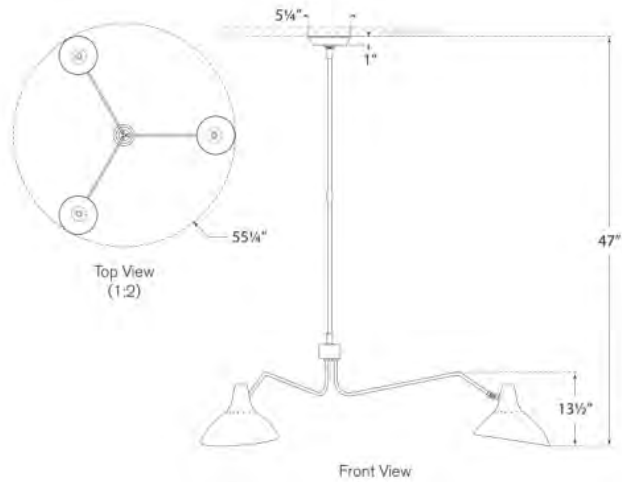
Lobby Interior Perspective Rendering

# Reflective Ceiling Plan



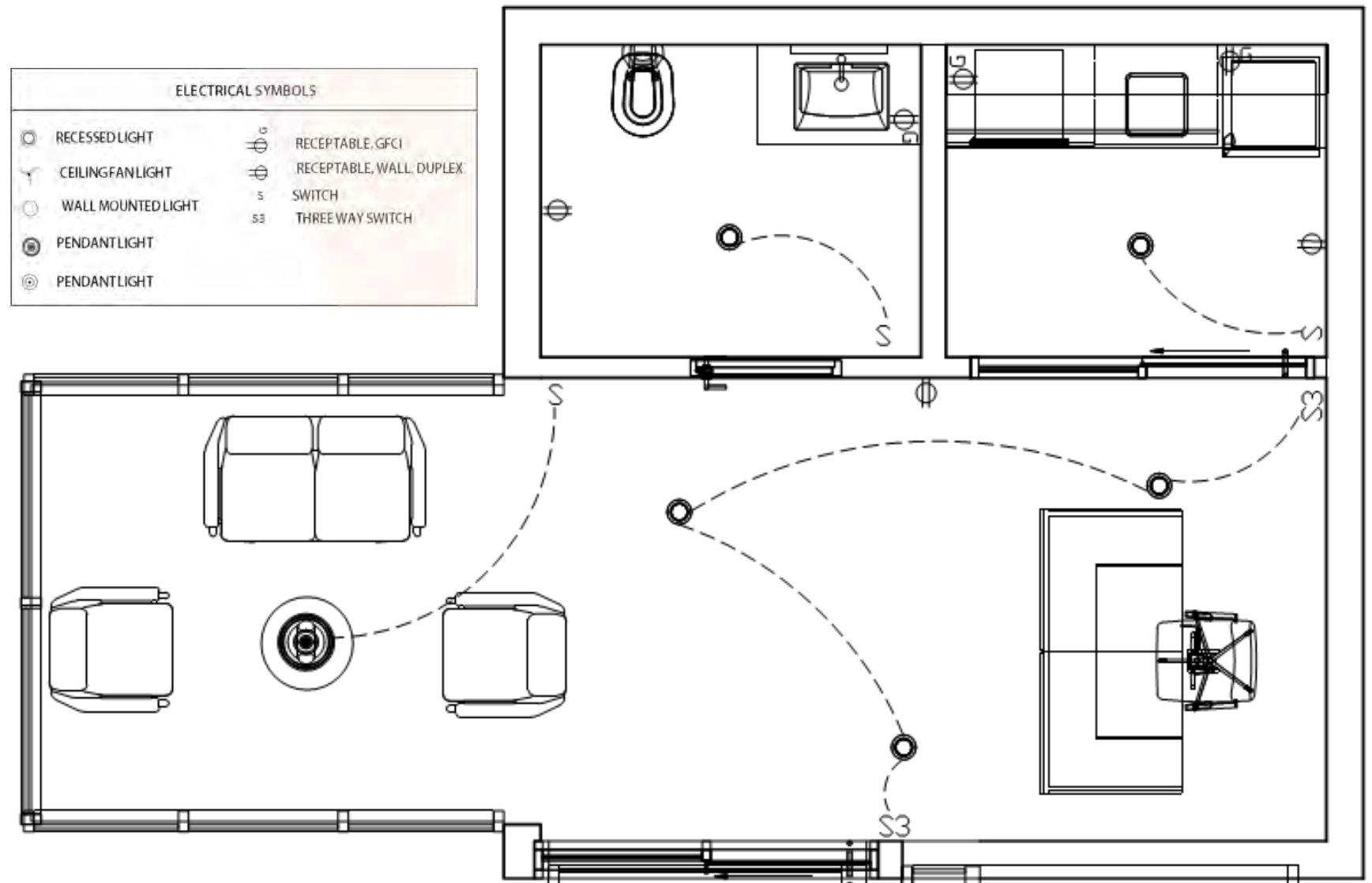
1 LOBBY - INTERIOR ELEVATION

SCALE: 1/4" = 1' - 0"



**Visual Comfort & Co**  
Charlton Large Triple Arm Chandelier

ELECTRICAL SYMBOLS			
	RECESSED LIGHT		RECEPTABLE, GFCI
	CEILING FAN LIGHT		RECEPTABLE, WALL, DUPLEX
	WALL MOUNTED LIGHT		SWITCH
	PENDANT LIGHT		THREE WAY SWITCH
	PENDANT LIGHT		



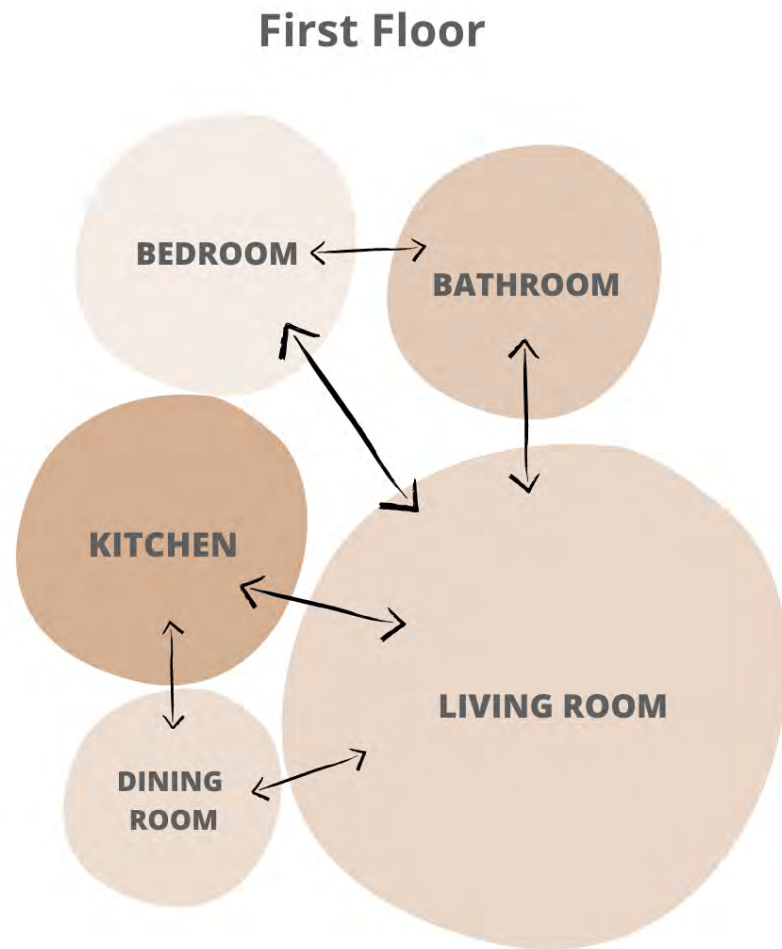
1 LOBBY - REFLECTED CEILING PLAN

SCALE: 1/4" = 1' - 0"

# A-Frame

## Process Work

### Bubble Diagram



### Second Floor



### Blocking Diagram



### Criteria Matrix

Criteria Matrix For: A-Frame House		SQ. FOOTAGE NEEDS	ADJACENCIES	PUBLIC ACCESS	DAYLIGHT AND/OR VIEWS	PRIVACY	PLUMBING	SPECIAL EQUIPMENT	SPECIAL CONSIDERATIONS
①	DINNING ROOM	90	②③	H	Y	N	N	N	ADJACENT TO MAIN ENTRANCE
②	LIVING ROOM	140	①③	H	Y	N	N	N	ADJACENT TO MAIN ENTRANCE
③	KITCHEN	70	①②④	H	Y	N	Y	N	
④	RESTROOM	60	③⑤	H	N	Y	Y	N	ADJACENT TO BACK EXIT
⑤	BEDROOM 1	100	④	L	N	Y	N	N	ADJACENT TO BACK EXIT
⑥	BEDROOM 2	140		L	Y	Y	N	N	LOCATED IN THE SECOND FLOOR

TOTAL SQ. FOOTAGE: 600

#### LEGEND

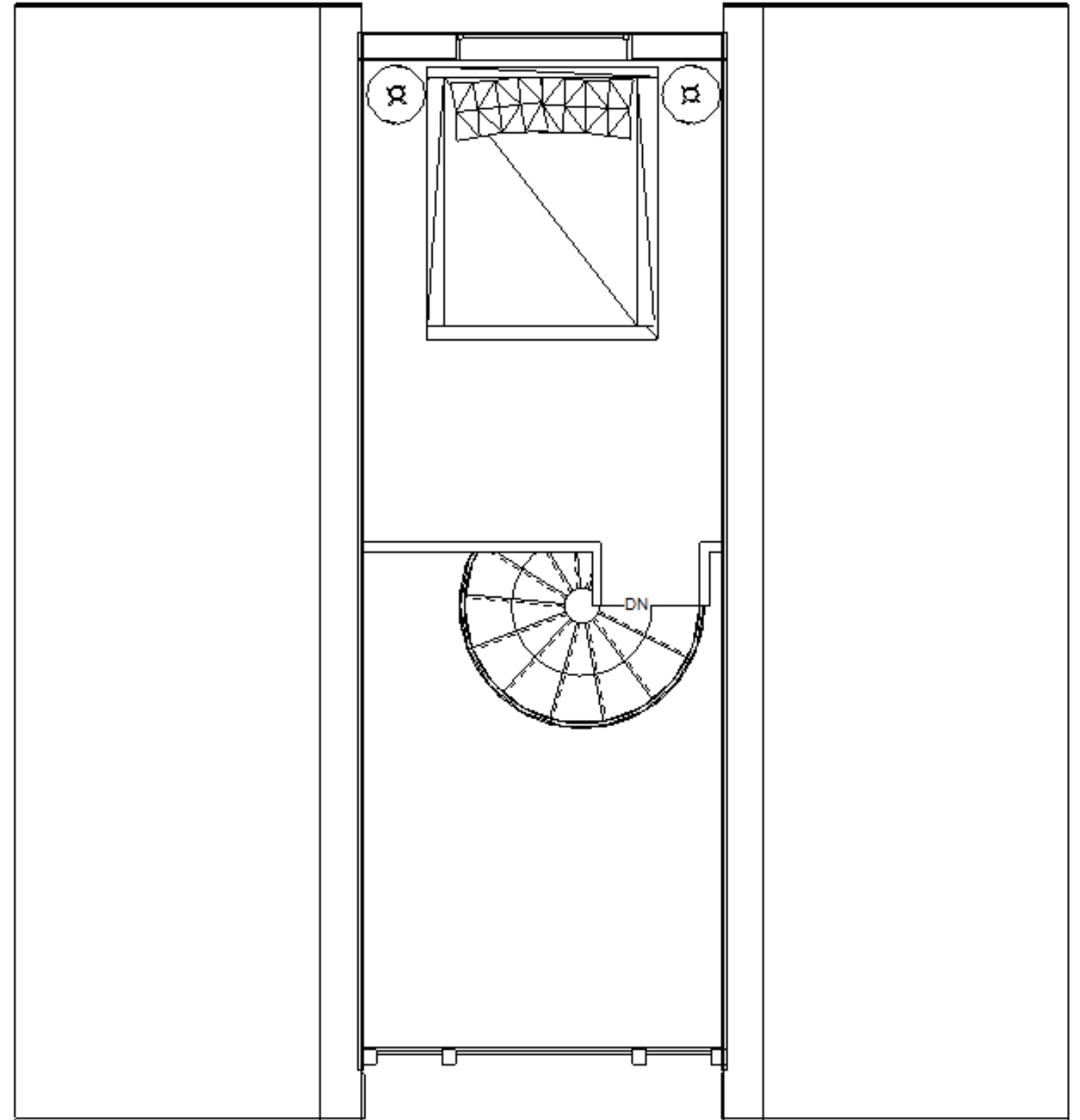
H - HIGH	● - PRIMARY ADJACENCY
M - MEDIUM	○ - SECONDARY ADJACENCY
L - LOW	+ - DISTANT ADJACENCY
Y - YES	= - NO ADJACENCY
N - NO	
I - IMPORTANT BUT NOT REQUIRED	

# Floor Plan



① A FRAME - FIRST FLOOR - FLOOR PLAN

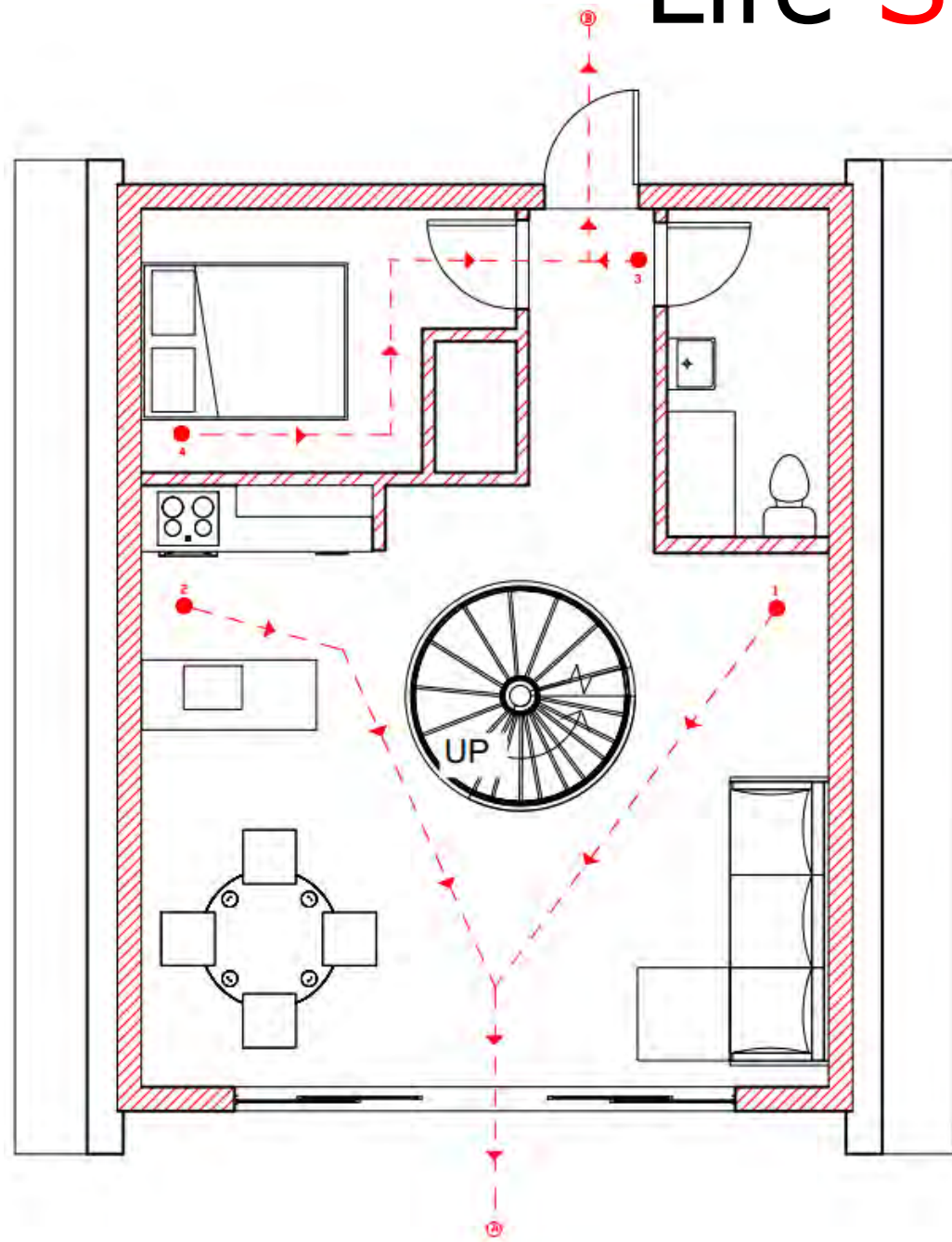
SCALE: 1/4" = 1' - 0"



① A FRAME - SECOND FLOOR- FLOOR PLAN

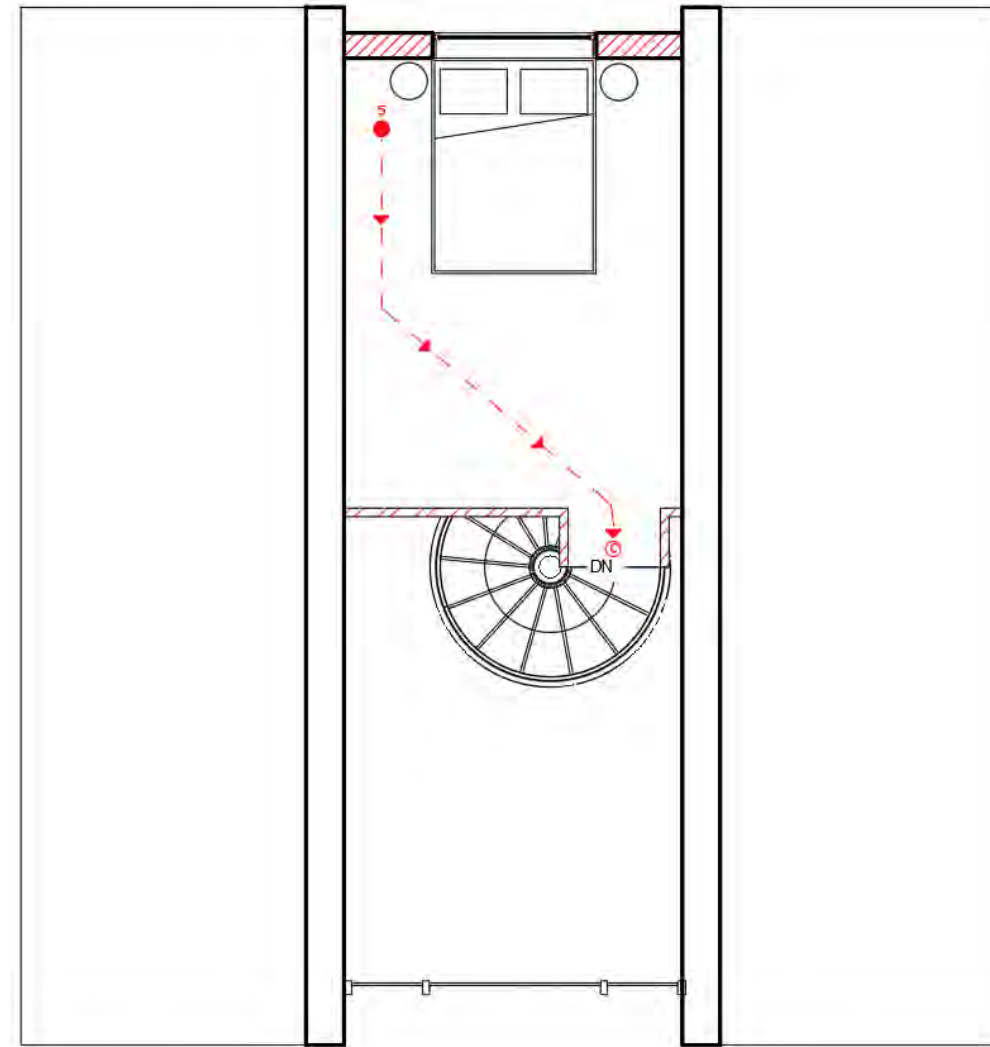
SCALE: 1/4" = 1' - 0"

# Life Safety Plan



① A FRAME - LIFE SAFETY PLAN

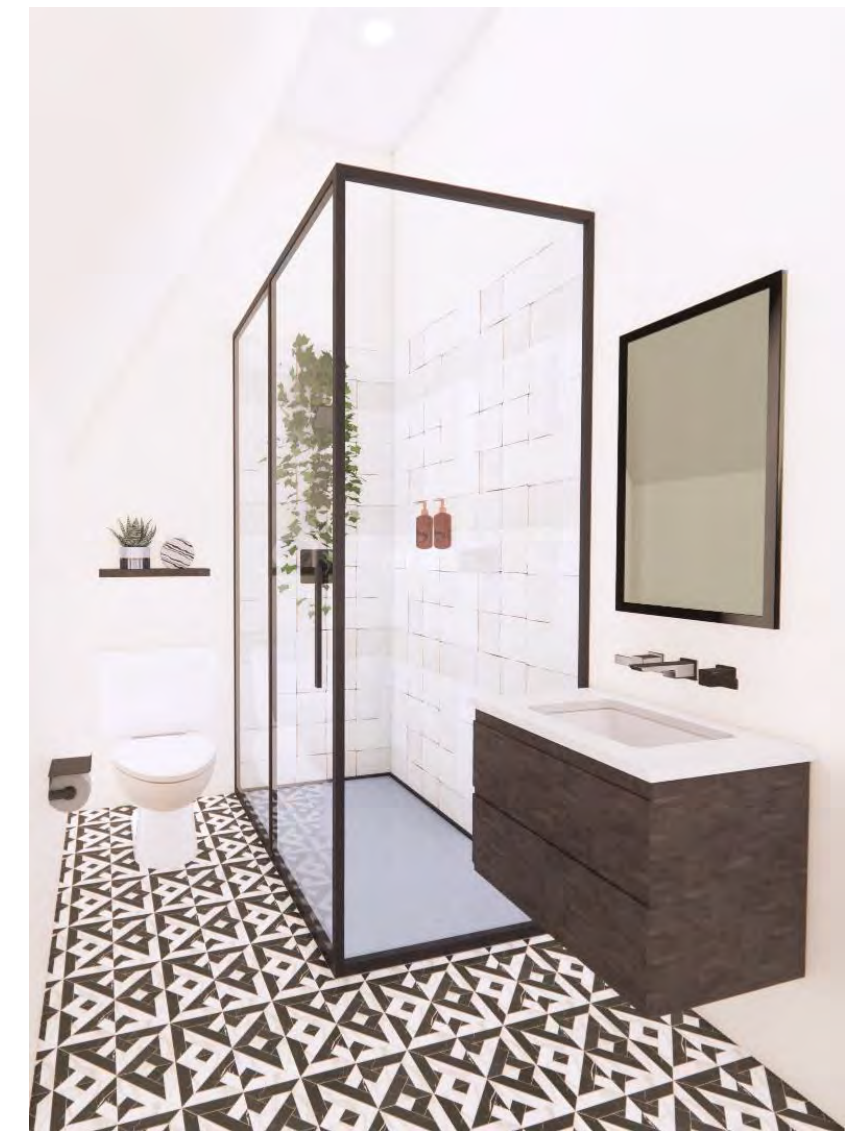
SCALE: 1/4" = 1' - 0"



② A FRAME - LIFE SAFETY PLAN

SCALE: 1/4" = 1' - 0"

- Maximum travel Distance= 75' feet
- \*IBC allows 30' feet if two egress pathways are present



A Frame House Bathroom Rendering

## LEGEND

A= EXIT 1	1= MOST REMOTE POINT	A1= 20'
B= EXIT 2	2= MOST REMOTE POINT	A2= 20'
C= EXIT 3	3= MOST REMOTE POINT	A3= 5'
	4= MOST REMOTE POINT	A4= 22'
		C5= 15'

## LEGEND

A= EXIT 1	1= MOST REMOTE POINT	A1= 20'
B= EXIT 2	2= MOST REMOTE POINT	A2= 20'
C= EXIT 3	3= MOST REMOTE POINT	A3= 5'
	4= MOST REMOTE POINT	A4= 22'
		C5= 15'

# Elevations



**Interior Define**  
Sloan 3-Seat Sofa



**LumiSource**  
Symphony Mid-Century Modern



**Welwick Designs**  
Round Black/English Oak Mid-Century Modern

1/A A FRAME - ELEVATION

SCALE: 1/4" = 1' - 0"



**Visual Comfort & Co**  
Joni Pendant

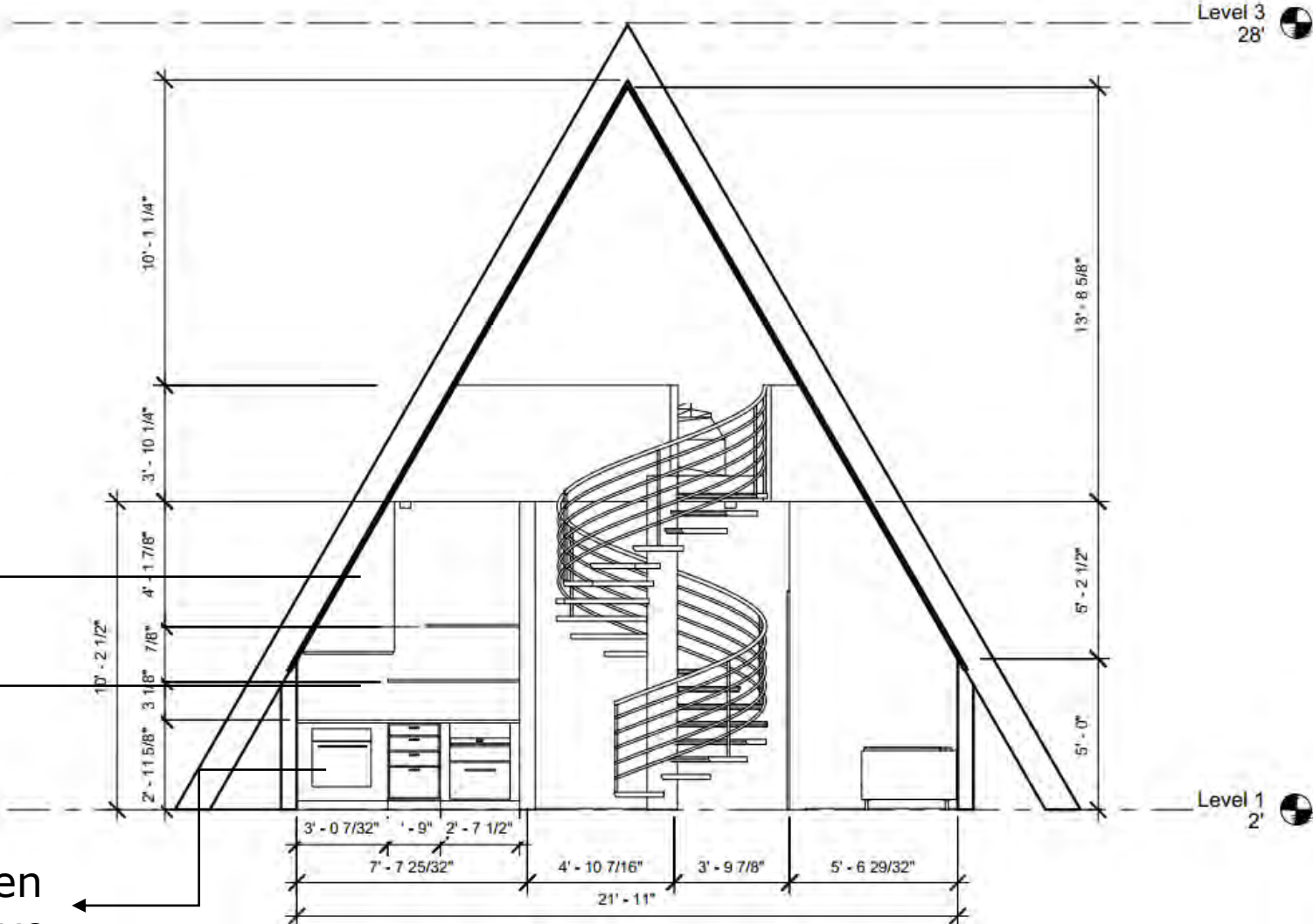


**Intra lighting**  
Nola C

Hood

Shelves

Built-in oven & microwave

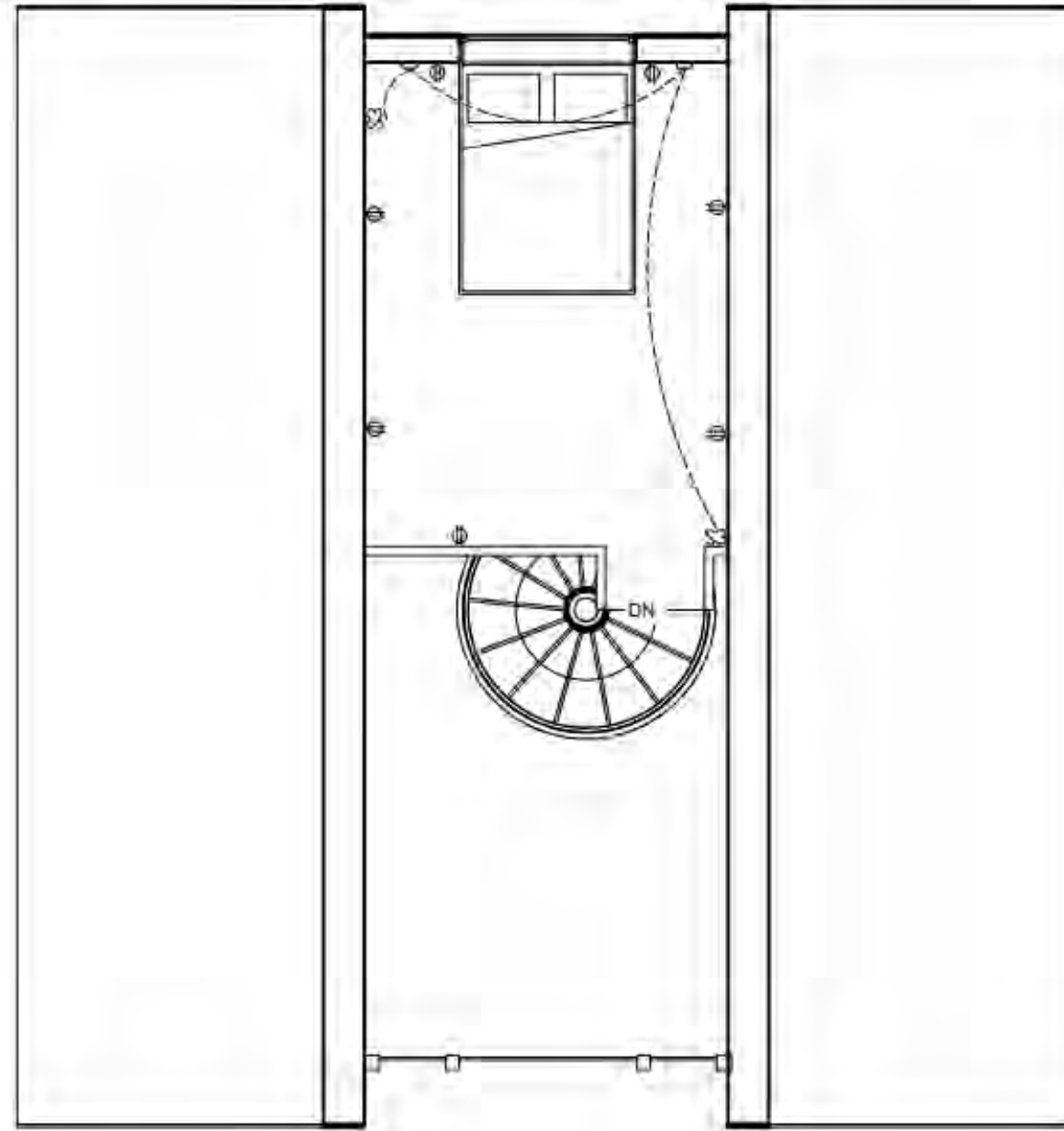
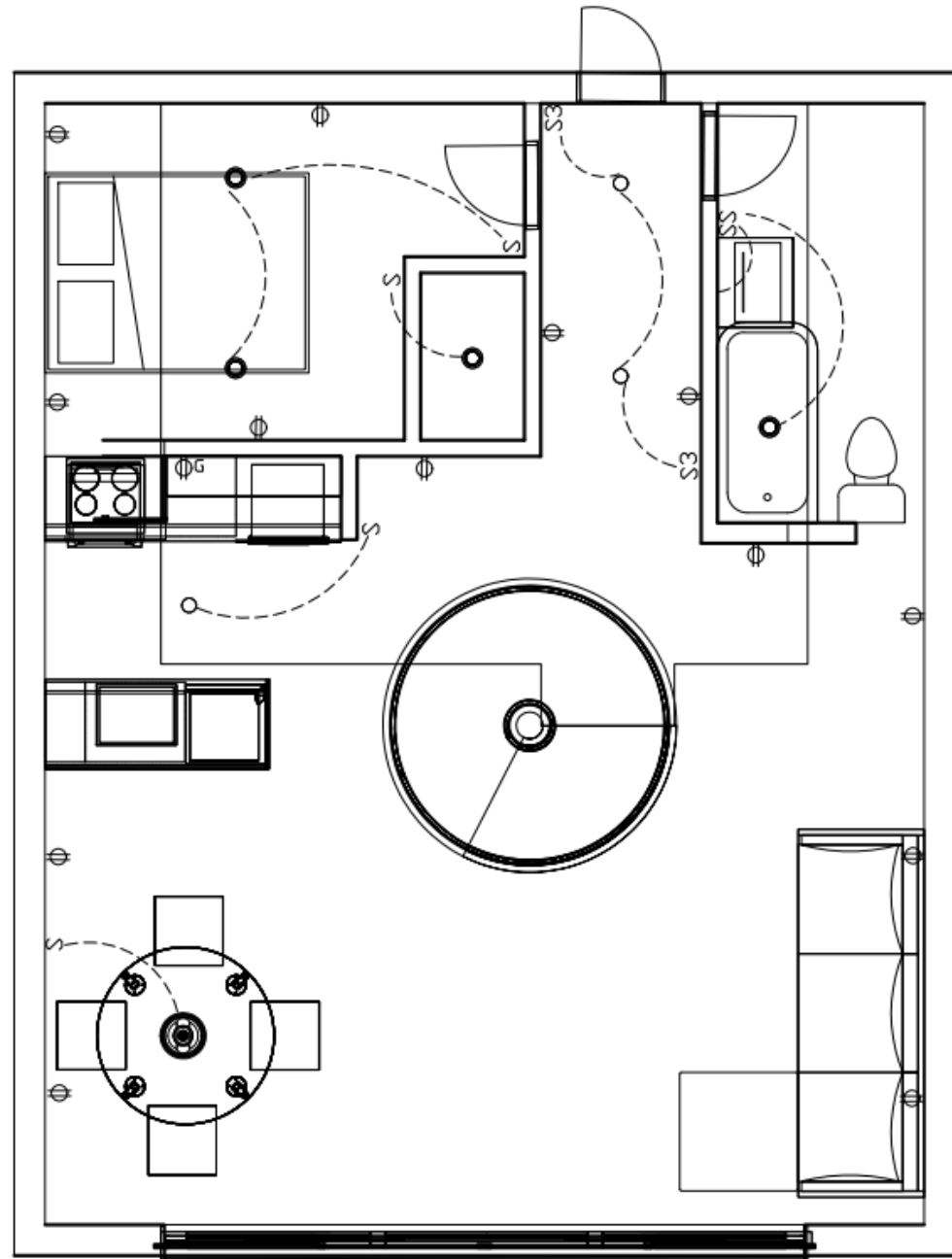


1/A A FRAME - ELEVATION

SCALE: 1/4" = 1' - 0"



# Reflective Ceiling Plan



ELECTRICAL SYMBOLS			
	RECESSED LIGHT		RECEPTABLE, GFCI
	CEILING FAN LIGHT		RECEPTABLE, WALL, DUPLEX
	WALL MOUNTED LIGHT		SWITCH
	PENDANT LIGHT		THREE WAY SWITCH
	PENDANT LIGHT		



A Frame Bedroom Rendering

① A FRAME - LEVEL 1 - REFLECTED CEILING PLAN  
SCALE: 1/4" = 1' - 0"

② A FRAME - LEVEL 2 - REFLECTED CEILING PLAN  
SCALE: 1/4" = 1' - 0"



**SW 7551**  
Greek Villa



**Ashley Furniture**  
Nightstand

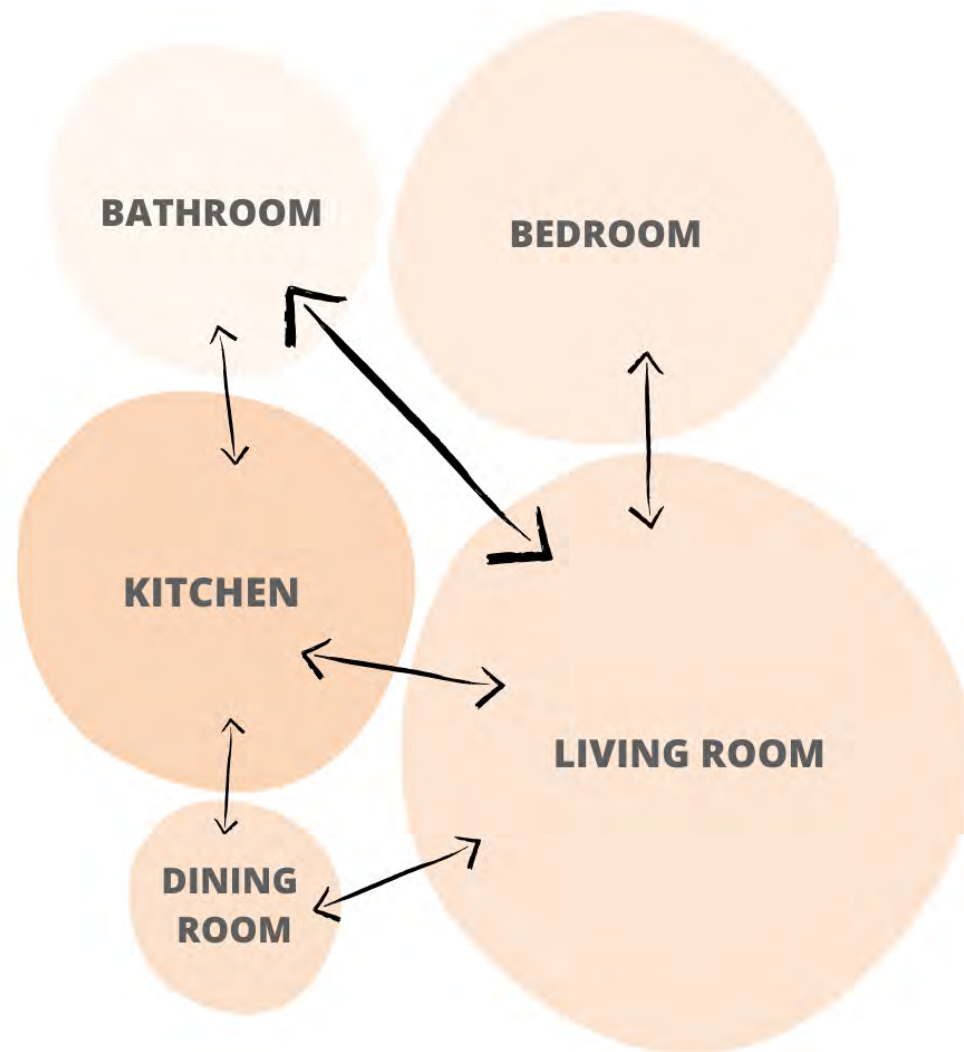


**Visual Comfort & Co**  
Kenway 18  
Pendant

# Two Stories

## Process Work

Bubble Diagram



Blocking Diagram



Criteria Matrix

Criteria Matrix For: Two Stories Apt		SQ. FOOTAGE NEEDS	ADJACENCIES	PUBLIC ACCESS	DAYLIGHT AND/OR VIEWS	PRIVACY	PLUMBING	SPECIAL EQUIPMENT	SPECIAL CONSIDERATIONS
①	DINNING ROOM	55	② ③	H	Y	N	N	N	ADJACENT TO MAIN ENTRANCE
②	LIVING ROOM	115	① ③	H	Y	N	N	N	ADJACENT TO MAIN ENTRANCE
③	KITCHEN	120	① ② ④ ⑤	H	Y	N	Y	N	
④	RESTROOM	90	③ ⑤	H	N	Y	Y	N	ADJACENT TO BACK EXIT
⑤	BEDROOM	160	② ③ ④	L	N	Y	N	N	ADJACENT TO BACK EXIT

TOTAL SQ. FOOTAGE: 540

LEGEND	
H - HIGH	● - PRIMARY ADJACENCY
M - MEDIUM	○ - SECONDARY ADJACENCY
L - LOW	+ - DISTANT ADJACENCY
Y - YES	= - NO ADJACENCY
N - NO	
I - IMPORTANT BUT NOT REQUIRED	



# Floor Plan



**Article**  
Timber Olio Green  
Sofa



**Ashley Furniture**  
Tilden Accent Chair



**Denver Modern**  
Vail Stool

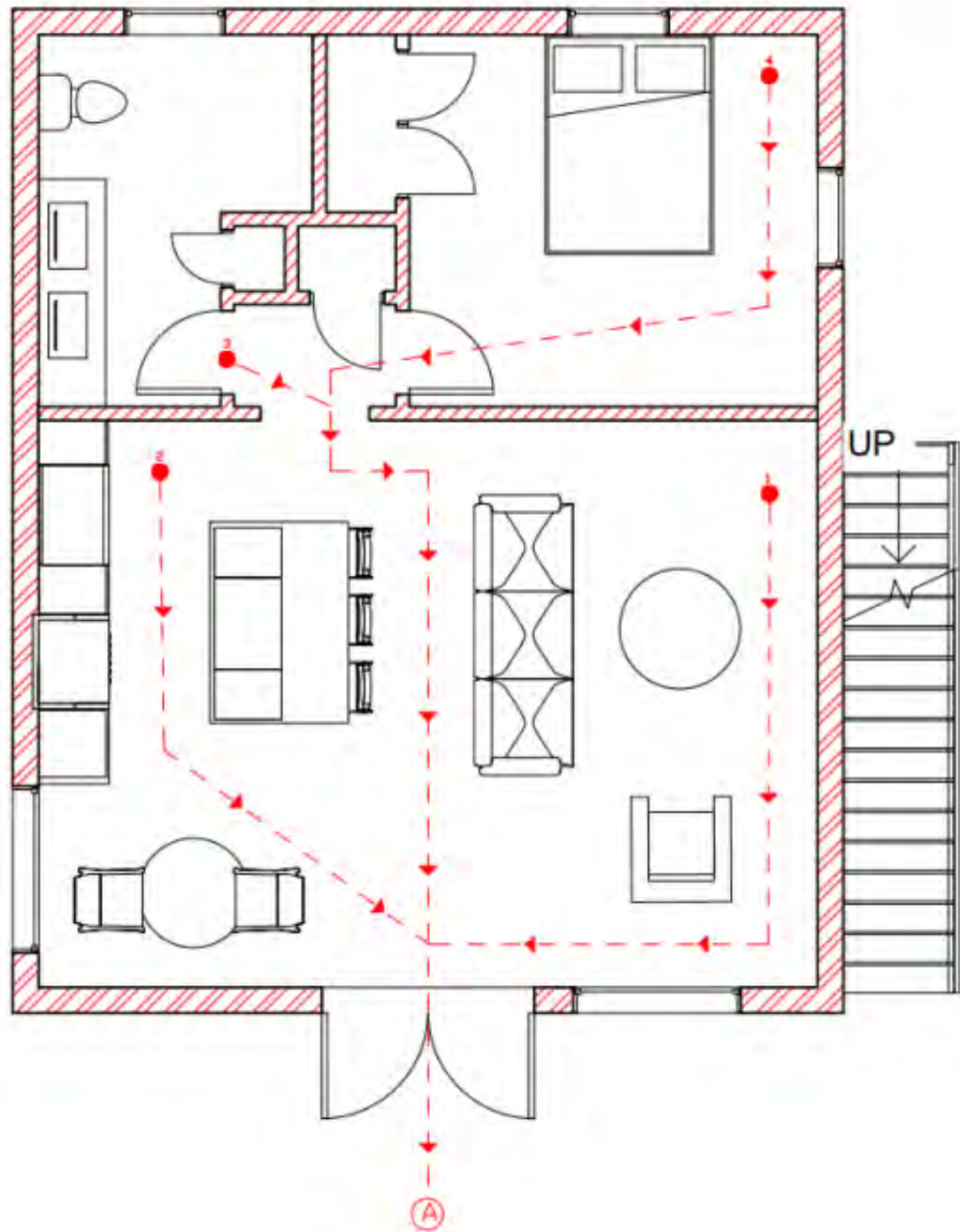


**Moss Design**  
Ma Round Dining  
Table 42"



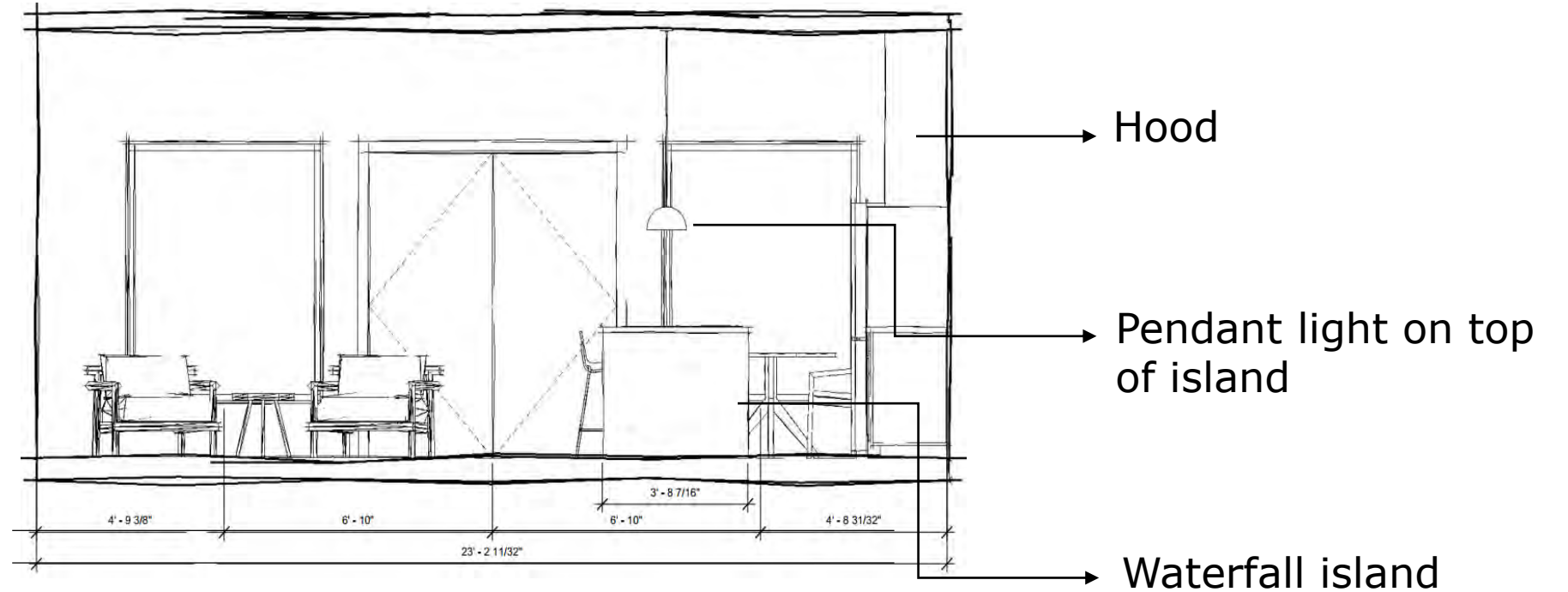
**Crate & Barrel**  
Pesaro Russett  
Leather Dining  
Armchair

# Life Safety Plan



① TWO STORIES - LIFE SAFETY PLAN  
SCALE: 1/4" = 1' - 0"

LEGEND	
A= EXIT 1	A1= 26'
1= MOST REMOTE POINT	A2= 25'
2= MOST REMOTE POINT	A3= 54'
3= MOST REMOTE POINT	A4= 44'
4= MOST REMOTE POINT	

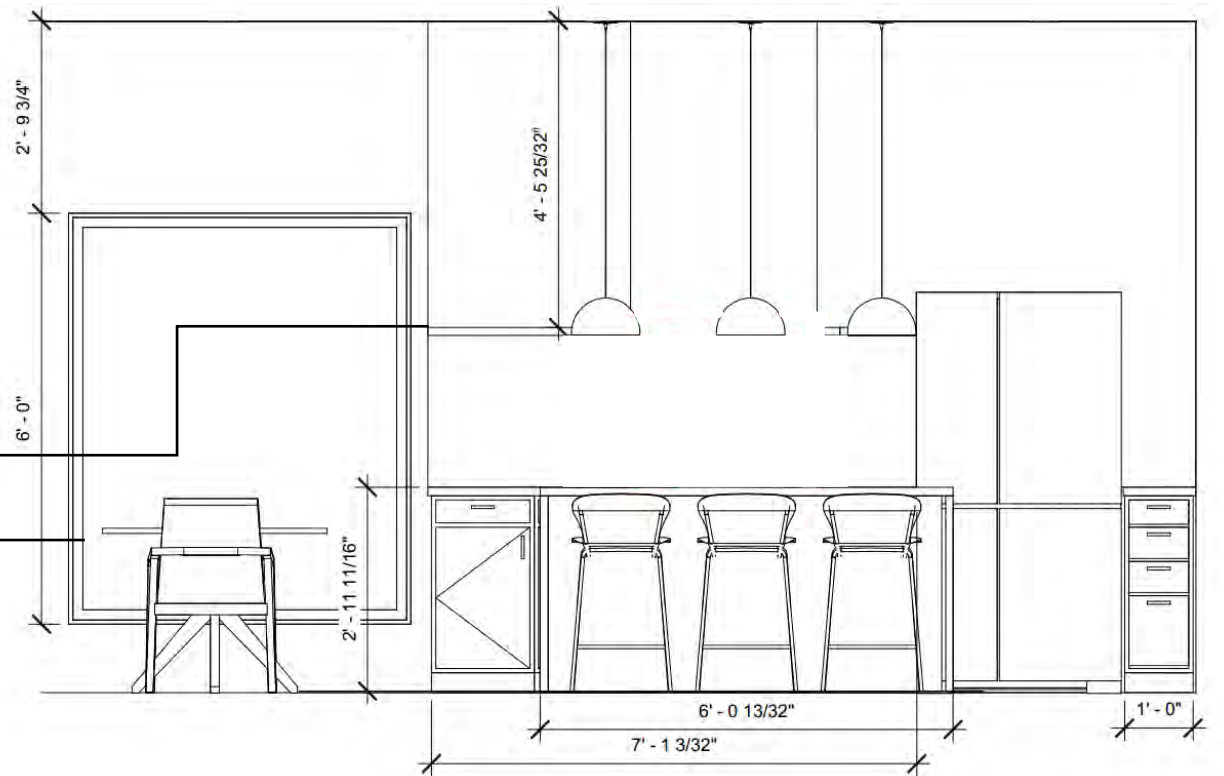


① a TWO STORIES - INTERIOR ELEVATION

SCALE: 1/4" = 1' - 0"

- Maximum travel Distance= 75' feet
- \*IBC allows 30' feet if two egress pathways are present

Shelves  
Large Window



① b TWO STORIES - INTERIOR ELEVATION

SCALE: 1/4" = 1' - 0"

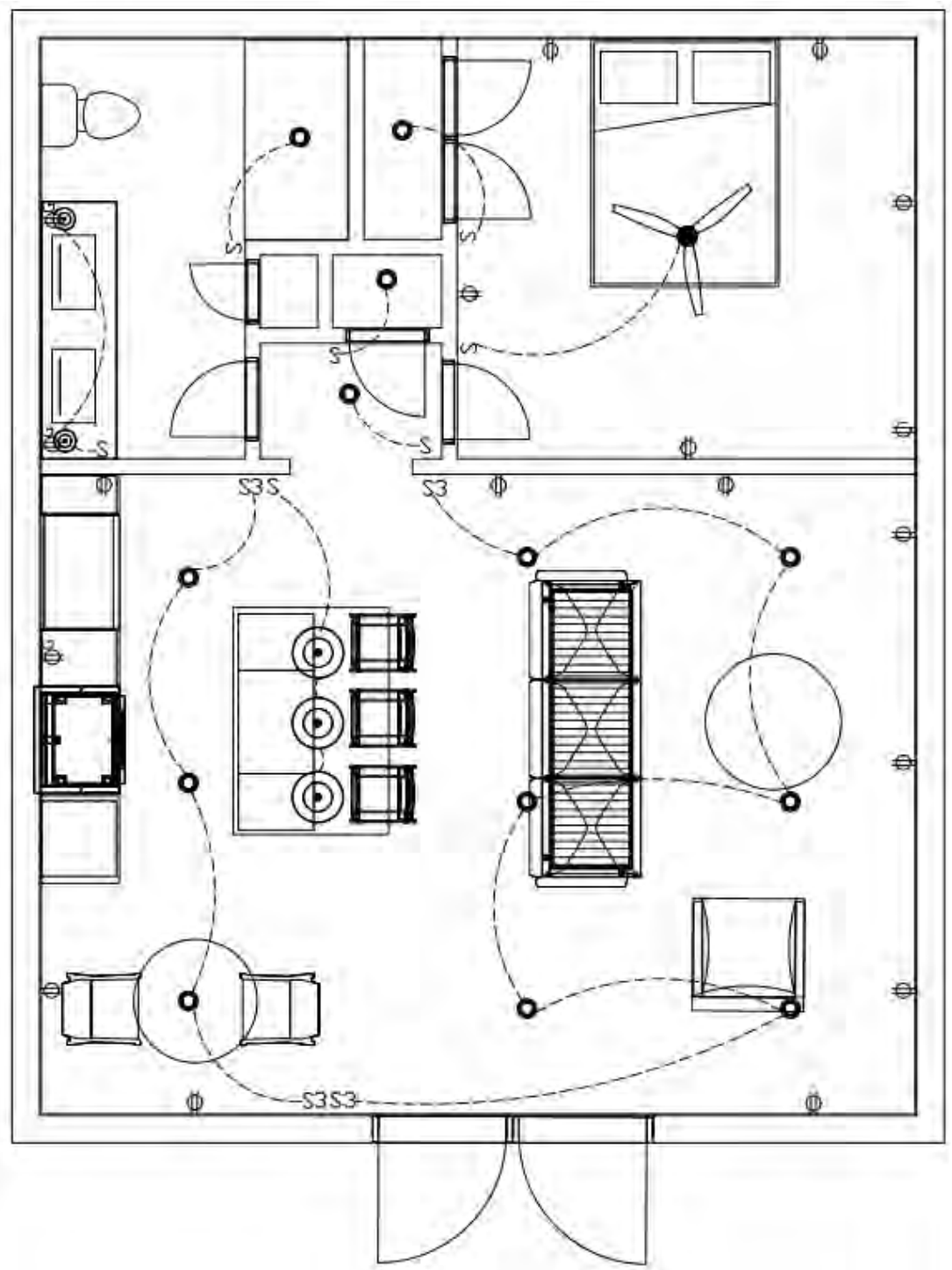


**Mable**  
Countertop



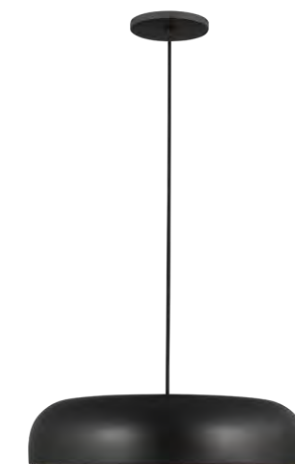
**Wood**  
Flooring

# Reflective Ceiling Plan



Two Stories Living Room & Kitchen Rendering

ELECTRICAL SYMBOLS			
	RECESSED LIGHT		RECEPTABLE, GFCI
	CEILING FAN LIGHT		RECEPTABLE, WALL, DUPLEX
	WALL MOUNTED LIGHT		SWITCH
	PENDANT LIGHT		THREE WAY SWITCH
	PENDANT LIGHT		



**Visual Comfort &  
Co**  
Kosa Pendant

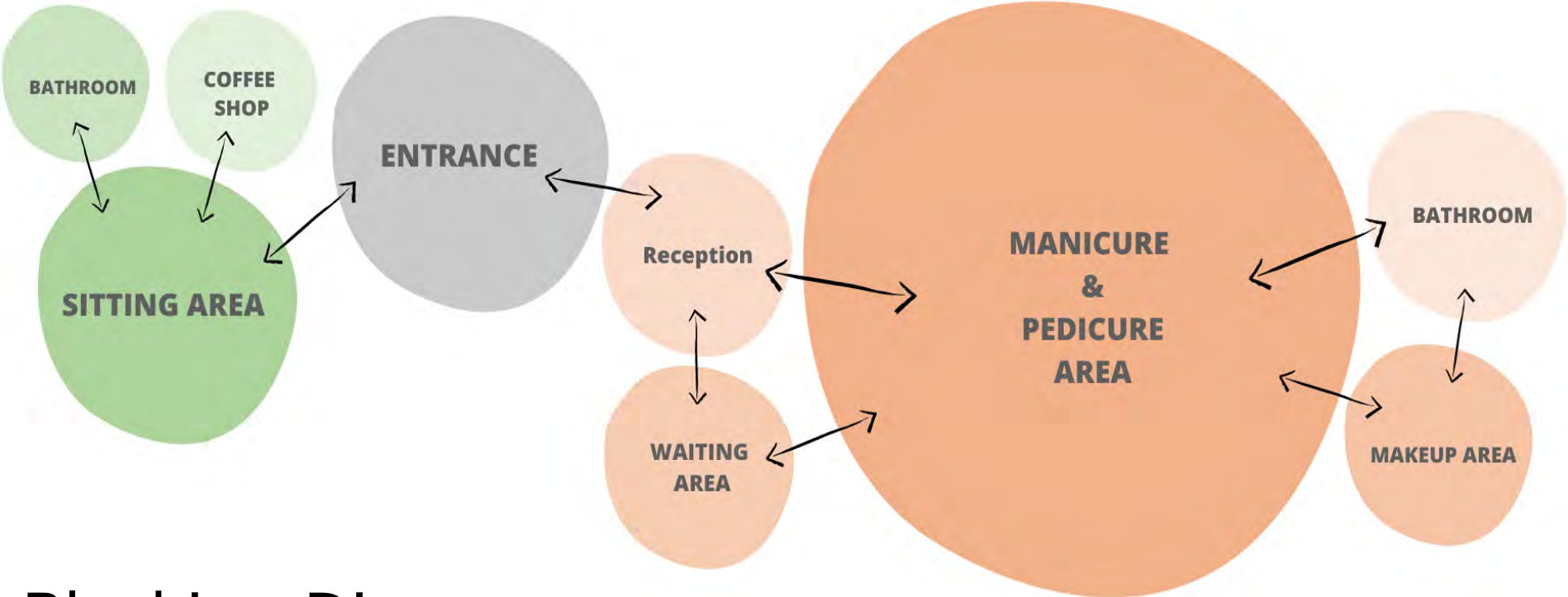
① TWO STORIES - REFLECTED CEILING PLAN

SCALE: 1/4" = 1' - 0"

# Salon & Cafe

## Process Work

Bubble Diagram

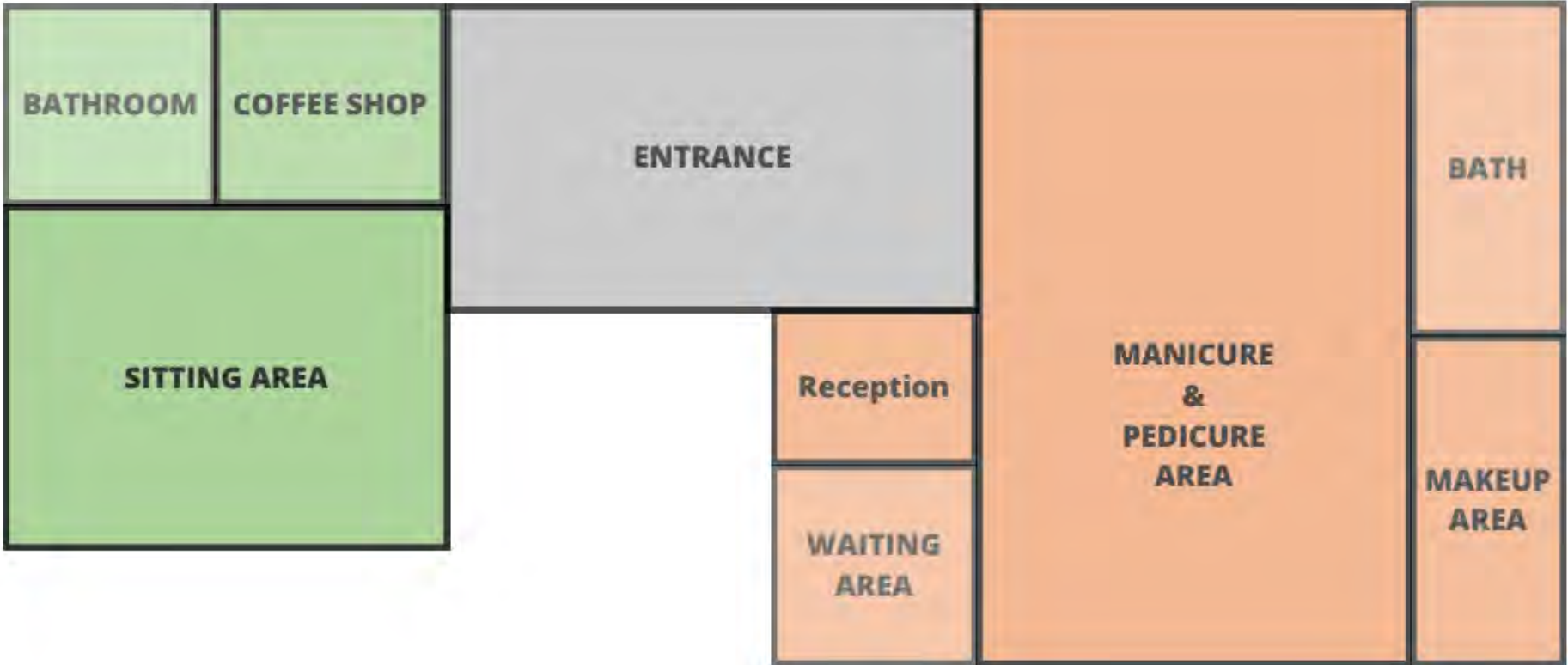


Criteria Matrix

Criteria Matrix For: - Salon - Coffee Shop		SQ. FOOTAGE NEEDS	ADJACENCIES	PUBLIC ACCESS	DAYLIGHT AND/OR VIEWS	PRIVACY	PLUMBING	SPECIAL EQUIPMENT	SPECIAL CONSIDERATIONS
①	ENTRANCE/ WAITING	250	② ⑨	H	Y	N	N	N	ADJACENT TO MAIN ENTRANCE
②	SALON RECEPTION	70	① ③ ④ ⑤	H	Y	N	N	N	CLOSE TO THE MAIN ENTRANCE
③	SALON WAITING AREA	140	② ⑤	H	Y	N	N	N	ADJACENT TO RECEPTION
④	MANICURE	215	② ⑤ ⑦	H	N	N	N	N	ADJACENT TO PEDICURE AREA
⑤	PEDICURE	520	② ③ ④ ⑥	M	Y	N	Y	N	SOLAR LIGHTING FOR BETTER ILUMINATION
⑥	MAKEUP AREA	140	⑤ ⑦	M	Y	N	N	N	SOLAR LIGHTING FOR BETTER ILUMINATION
⑦	RESTROOM	100	④ ⑤ ⑥	L	N	Y	Y	N	
⑧	CLOSET	100	④ ⑧	L	N	Y	N	N	
⑨	COFFEE STATION	170	① ①	H	Y	N	Y	Y	CONVENIENT FOR EVERYONE
⑩	SITTING AREA	540	⑨ ⑩	H	Y	N	N	N	SOLAR LIGHTING FOR BETTER ILUMINATION
⑪	RESTROOM	100	⑨ ⑩	L	N	Y	Y	N	

TOTAL SQ. FOOTAGE: 2,350

Blocking Diagram



LEGEND	
H - HIGH	● - PRIMARY ADJACENCY
M - MEDIUM	○ - SECONDARY ADJACENCY
L - LOW	+ - DISTANT ADJACENCY
Y - YES	= - NO ADJACENCY
N - NO	
I - IMPORTANT BUT NOT REQUIRED	

# Floor Plan



## MATERIALS SCHEDULE

### M1. Cafe Flooring

Corn Silk Oak Waterproof  
Luxury Vinyl Plank Flooring 6  
in. Wide x 36 in. Long

### M2. Roof

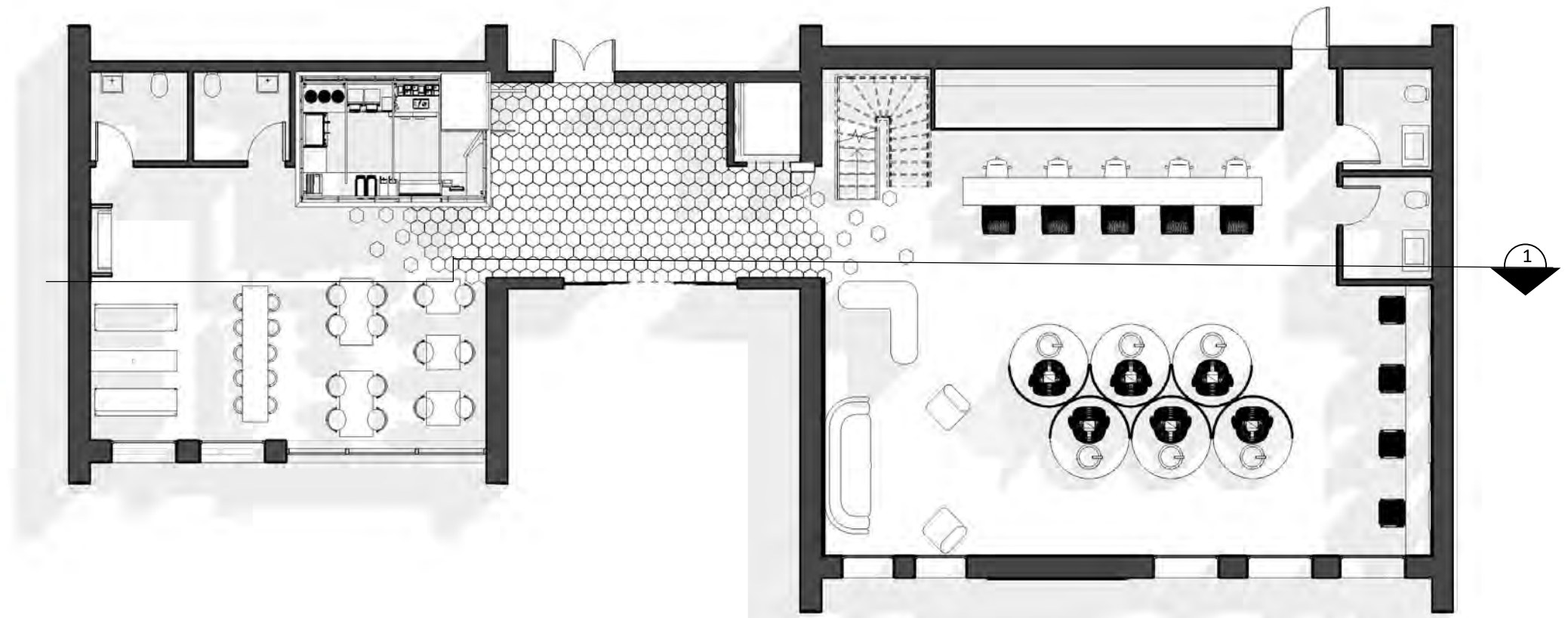
SM-Rib Galvalume Steel 29-  
Gauge Roof/Siding Panel in  
Black

### M3. Spa Flooring & Wall

Rift Grafito 32x32 Semi-  
Polished Porcelain Tile

### M4. Lobby Wall

White Oak 28 MIL x 8.9 in.  
W x 46 in. L  
Water Resistant Luxury Vinyl  
Plank Flooring



① CAFE & SALON – FIRST FLOOR – FLOOR PLAN

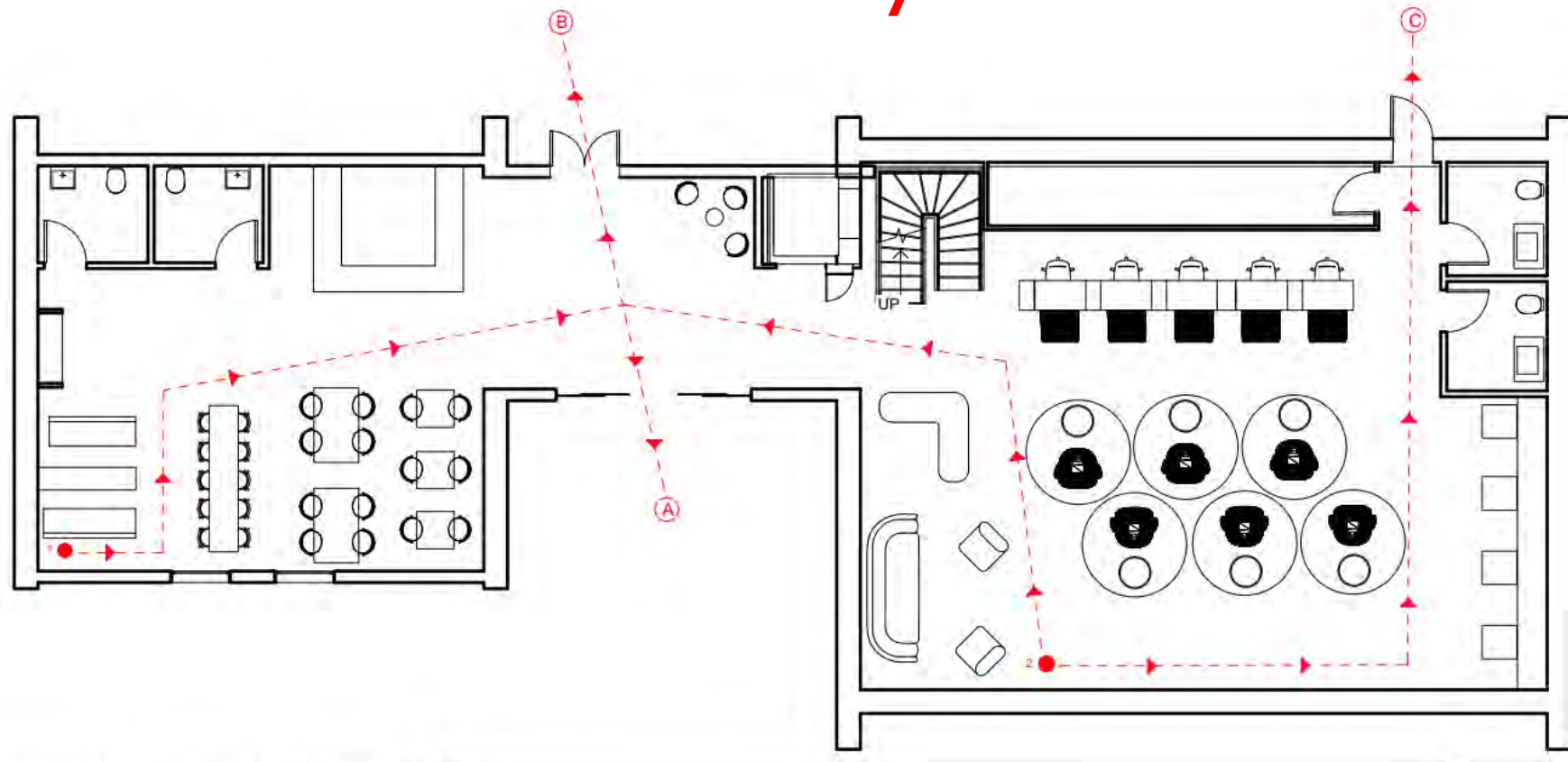
SCALE: 1/4" = 1' - 0"



① CAFE & SALON – SECOND FLOOR – FLOOR PLAN

SCALE: 1/4" = 1' - 0"

# Life Safety Plan



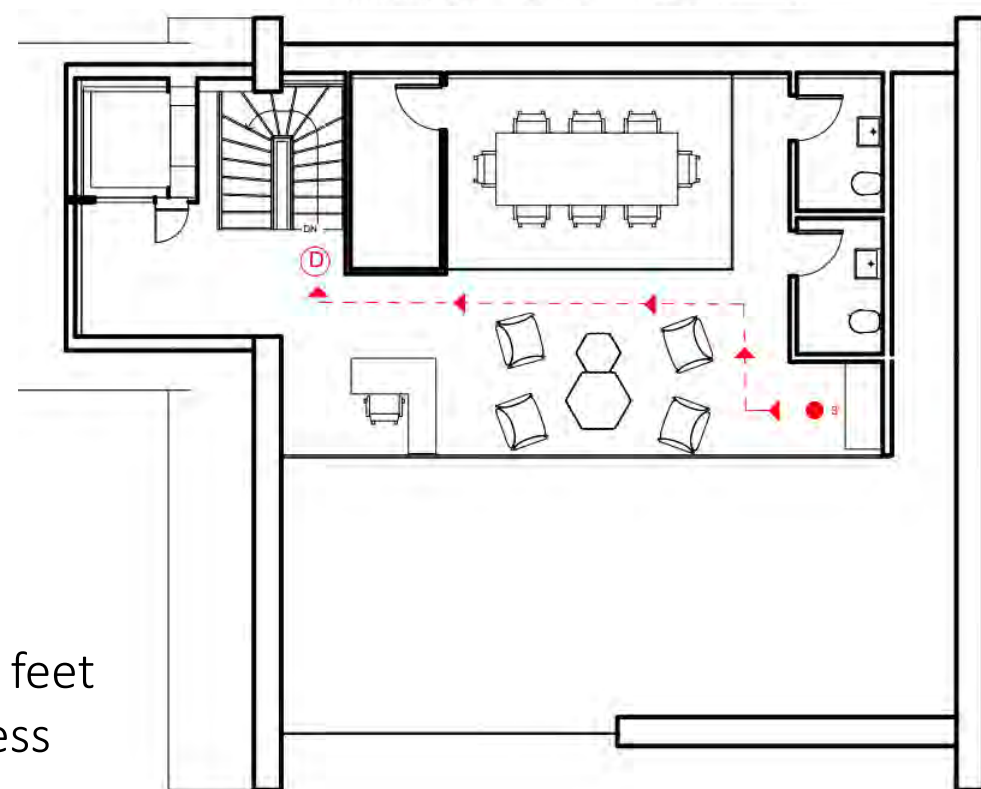
① CAFE & SALON – FIRST FLOOR – FLOOR PLAN



Salon Interior Perspective Rendering

SCALE: 1/4" = 1' - 0" 0 1' 2' 4' 10'

LEGEND	
A=	EXIT 1
B=	EXIT 2
C=	EXIT 3
1=	MOST REMOTE POINT
2=	MOST REMOTE POINT
3=	MOST REMOTE POINT
A1=	54'
A2=	56'
B1=	68'
B2=	56'
C2=	70'
D3=	36'



① CAFE & SALON – SECOND FLOOR – FLOOR PLAN

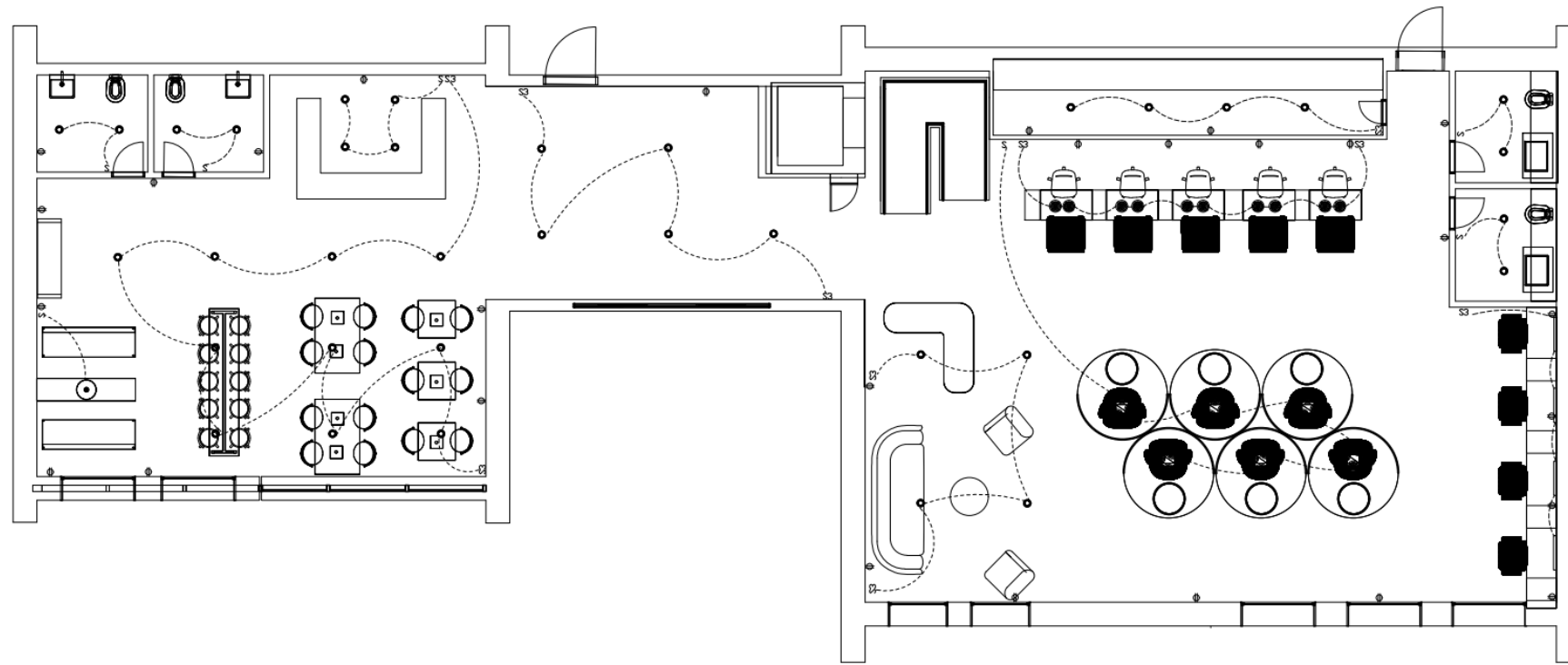
SCALE: 1/4" = 1' - 0" 0 1' 2' 4' 10'

- Maximum travel Distance= 75' feet
- \*IBC allows 30' feet if two egress pathways are present



Cafe Interior Perspective Rendering

# Reflective Ceiling Plan



① CAFE & SALON – FIRST FLOOR – RCP

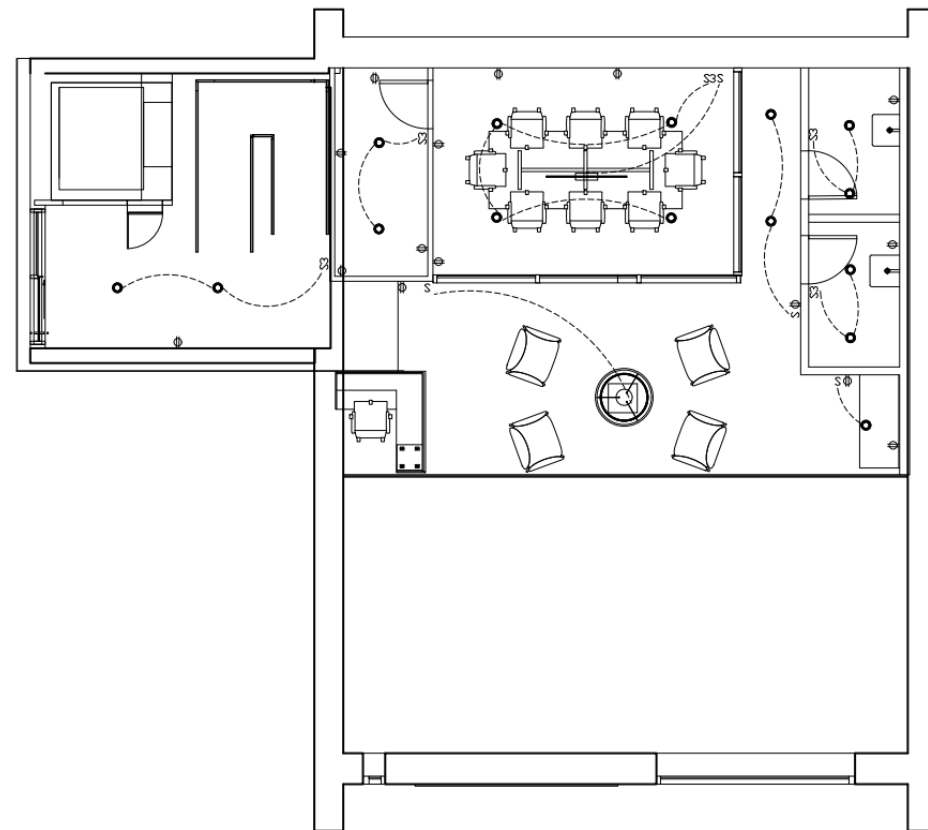
SCALE: 1/4" = 1' - 0" 0 1' 2' 4' 10'



**Visual Comfort & Co**  
Londyn Round Pendant



**Visual Comfort & Co**  
Londyn Tall Pendant



① CAFE & SALON – SECOND FLOOR – RCP

SCALE: 1/4" = 1' - 0" 0 1' 2' 4' 10'



APACFA Conference Room Interior Perspective Rendering



**Teknion**  
Petal Chair



**Four Hands**  
Schwell Coffee Table



**Visual Comfort & Co**  
Grace



**Interior Icons**  
Paulin Chair



**Interior Icons**  
Groovy Chair

① CAFE-SALON - EXTERIOR ELEVATION

SCALE: 1/2" = 1' - 0"

[Walkthrough Video](#)



① CAFE-SALON - CROSS SECTION

SCALE: 1/2" = 1' - 0"



**THANK YOU!**

