

Editor
Elizabeth B. Farmer '96

Associate Editor
Eric Lawson

Associate Editor - Development
Suzanne White

Associate Editor - Alumnae
Bobbie Daniel '71

Converse Club News
Elizabeth Simons

Graphic Designer
Allison M. Walker

Production Assistant
Donna P. Gardner



CON B U L L

The Converse Bulletin is published three times a year for alumnae and friends of Converse College by the Office of Communications, Converse College, 580 East Main Street, Spartanburg, SC 29302-0006, (864) 596-9704. Converse College does not discriminate in admissions or employment on the basis of race, color, sex, national or ethnic origin, age, sexual orientation, religion, or disability. Converse admits only women to undergraduate programs and services in accordance with its historical mission.

SUMMER 2001, Volume 113, No. 2
Copyright © 2001 by Converse College

Cover Photography: Stephen Stinson

Correction: In the Spring '01 issue of the *Bulletin*, we reported that Converse College students had completed research for four SCICU projects during summer 2000. The actual number of SCICU projects completed by Converse students during that time is five. We regret the error.

Cover Photo: Groundbreaking for the expansion of the Milliken Fine Art Building, during Founder's Day celebrations on April 19, 2001 (from L to R) Shea Stellar '01, president of the Art Club and graphic design major; President Nancy Oliver Gray, Roger Milliken representing his wife, Justine V.R. "Nita" Milliken; Mary Belser '69, chairman of the Development Committee and incoming chairman of the Board of Trustees; and Kurt Zimmerli, chair of the Buildings and Grounds Committee.

16



A New Tradition:
Converse Bibs!



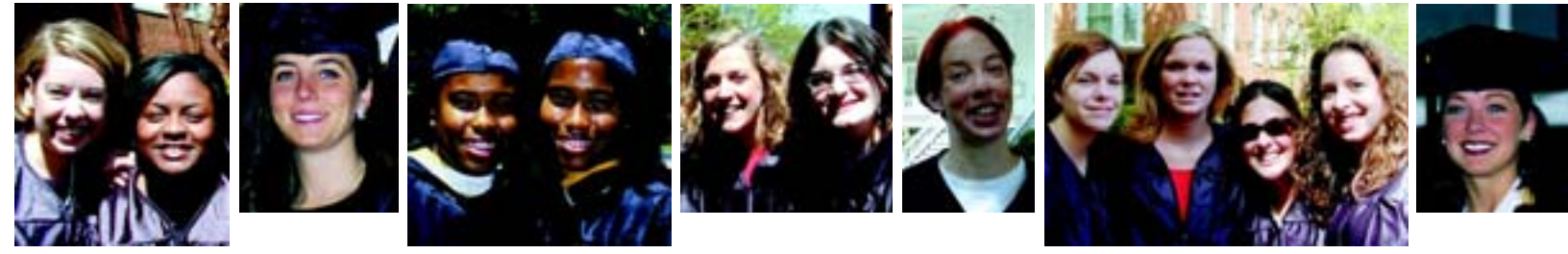
6

Groundbreaking
for the
Milliken Expansion



14

The Largest Reunion
in Converse History



verse

E T I N



**Panamanian President
Visits Converse**

8

13



**A Converse Mystery
Solved**

C O N T E N T S

- 2** A Message from the President
Converse Builds for the Future
- 4** Commencement 2001
- 6** Converse News
- 10** A Farewell To Retiring Faculty
- 12** Faculty & Student Accomplishments
- 14** Reunion 2001
- 16** Alumnae News
- 18** Honor & Memorial Gifts
- 20** Club Events
Upcoming Alumnae Events
- 22** Life Events
- 24** Class Notes



**Commencement
2001** **4**



**Converse Honors
Julia Jones Daniels '53
for Outstanding
Service as Chairman
of the Board of Trustees,
1999-2001**

Converse bids farewell to Julia Jones Daniels '53 of Raleigh, NC as chairman of the Converse College Board of Trustees. Julia served as chairman from 1999 to 2001, and has been an active member of the board since 1994. She is the first graduate of Converse to serve as chairman.

During her term as chairman, Julia led Converse through campus enhancements including the construction of the Sally Abney Rose Physical Activity Complex and Weisiger Center, groundbreaking for the expansion of Milliken Art Building, and renewal of Wilson Hall made possible by Mary Helen Dalton '46. Julia's leadership also carried Converse into the public phase of the Campaign for Converse: Building for the Future, which was announced in April. She took a keen interest in Converse students, serving as a role model and interacting with them at every opportunity. She also reached out to alumnae, encouraging them to support their alma mater by recruiting students and providing financial support.

As an active community member and volunteer, Julia has received numerous awards and recognitions for her service. Most recently, she was named Distinguished Woman of North Carolina by the lieutenant governor. Julia is married to Frank A. Daniels, Jr., past president and publisher of the *Raleigh News and Observer*. They have two children, Frank A. Daniels, III, and Julia Graham Daniels Nowell.

Converse Builds for

Just as summer is alive with new life, Converse College is thriving with energy. Over the last few months, we unveiled an exciting \$75 million capital campaign, broke ground for the expansion of the Milliken Fine Arts Building, awarded degrees to the Class of 2001, and hosted the largest alumnae reunion in the College's history.

The capital campaign, appropriately titled *Building for the Future*, is the driving force for our new campus master plan. Through gifts given to this campaign, we will come closer to reaching our goal of being the college of choice for women in the South. Much needed construction of new buildings and renovations of existing facilities are underway as we work to provide our students with contemporary learning resources.

On the same day we announced the public phase of our campaign, we broke ground for the Justine V.R. "Nita" Milliken Wing of the Milliken Fine Arts Building. The wing will provide an additional 14,000 square feet to the existing building, and will house lecture studios, a computer-aided design (CAD) lab, darkrooms for photography classes, faculty studios in lofts, an additional art gallery, and a historic preservation room. Construction is scheduled to be completed by the spring of 2002.

But the impact of this campaign is much more than the construction of new buildings. Our priority is to make an already strong Converse education even stronger. We have made tremendous strides in this area with the establishment of the Nisbet Honors Program, the expansion of the Chapman Study Abroad Experience, and the creation of 50 new endowed scholarships. We need to maintain this momentum by establishing more endowed scholarships, funding additional performance endowments

for the Petrie School of Music, and establishing funds for faculty and staff development so that we can recruit and retain the best faculty and staff.

As we build for the future here on the Converse campus, the Class of 2001 has already taken steps for their future beyond college. With pride, we awarded 157 degrees during commencement exercises in May to students who are going on to graduate and professional schools or beginning their first jobs. Harriet Smith



From the President



the Future

O'Neill '78, a member of the Converse family who now serves as a Justice for the Texas State Supreme Court, delivered the commencement address. In her address, she encouraged the graduates to test their limits. "If you don't live life on the edge," she said, "you'll never see the view."

Converse is indeed a special place. We are truly proud of our rich heritage and tradition, and it is with enthusiasm that we look to the future. As we do so, we ask each of you to join us in building for

the future of Converse. Whether you refer a prospective student and bring her to see the campus, help establish an internship for a student, make a special gift, or attend a Converse alumnae event in your area, join us in this effort to secure the future for new generations of Converse students.

Nancy Gray

Nancy Gray



Converse Welcomes Mary Rainey Belser '69 as Chairman of the Board of Trustees

Mary Rainey Belser '69 of Columbia, SC took the helm as Converse's new chairman of the Board of Trustees this July. She has been a member of the board since 1995. Mary became chair of the development committee of the board in 1997, and in 1998 co-chaired the Johnson Challenge effort with Bill Barnet. Her dedicated leadership continued following the successful completion of the challenge when she agreed to serve as co-chair of The Campaign for Converse: Building for the Future.

As an active member of the community, Mary serves on the board of directors for the South Carolina Governor's School for the Arts and Humanities, located in Greenville, SC, and as chairman of the school's Foundation Board. She also currently serves on the board of South Carolina Independent Colleges and Universities, is a past chairman of the board for Heathwood Hall Episcopal School, and past board member for The Columbia Museum of Art. In 1994, Mary received the Community Service Award from Converse College. She is married to Clinch H. Belser, Jr., attorney with Belser & Belser, P.A. They have three children, Duncan, Freeman, and Callie.



Ready to MAKE THEIR MARK

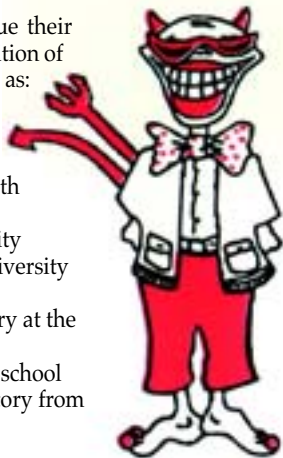
It's no secret that a Converse College degree has served as the ticket to success for many graduates. Converse alumnae are a very successful group and include a Pulitzer Prize winning novelist, a Broadway performer, a Deputy Crew Commander with NASA, a Supreme Court Justice for the state of Texas, and a Fulbright Scholar - just to name a few. And now it is time for the Class of 2001 to take their rightful place among this impressive group.

Even as they walked across the stage to accept their degree, many of the graduates had jobs waiting for them, taking the next step of their life's journey. Just a few examples:

- an Industrial Engineer and a Process Improvement Manager at Milliken & Co.
- five commissions as Lieutenants in the U.S. Army (one of who is entering flight school and will be an Aviation Officer)
- a high-level position with Nissan in Japan
- the Touring Director for the Missoula Children's Theatre in Montana, which tours the United States and Canada.
- the Director of Individual Giving at Jacob's Pillow Dance Festival
- a Financial Analyst with the Naval Audit Service
- a marketing/sales associate for The Greenville Lions Professional Soccer Team
- a loan officer for Citizens First Trust mortgage company
- the campaign manager for SC Attorney General
- an Applications Programmer/Systems Analyst for Liberty Insurance Services
- a member of the Human Resources staff at UCI Medical Affiliates

Many other graduates will continue their education, following the Converse tradition of acceptance into such premier programs as:

- the master's program in vocal performance at the New England Conservatory
- a master's program in public health at Emory University
- law school at St. Thomas University
- the School of Pharmacy at the University of South Carolina
- a Ph.D. program in Political Theory at the University of Virginia
- University of North Carolina law school
- a master's program in Public History from NC State



As the Class of 2001 marched into Twichell Auditorium for May 19 commencement exercises, their facial expressions said it all. The lab work, the research papers, the recitals-it was all worth it. Ready to seize the future, their day had finally arrived.

During the ceremony, 157 degrees were conferred and two honorary degrees were presented.

As she stood center stage in the auditorium, President Nancy Gray welcomed those in attendance, then looked over to the graduating class and spoke of the prestige of a Converse degree. "Since 1889, graduates of Converse College have walked from these grounds fully prepared to take their next step in

life's journey. And now it is time for you, the members of the class of 2001, to take your place among a very successful group of alumnae. Tomorrow truly belongs to you, and we can all see that tomorrow is in good hands."

During the ceremony, Converse welcomed home alumna Harriet Smith O'Neill '78 to deliver the commencement address. She was also presented with an honorary Doctor of Laws. After graduating from Converse, O'Neill received her Juris Doctor from the University of South Carolina School of Law, where she was a member of the academic honors society and served as the law school representative to the American Bar Association. She was appointed to the Fourteenth Court of Appeals in Houston by George W. Bush, and was subsequently elected to a full term. She left the Court of Appeals with an approval rating of 91%— the highest approval rating on her nine-member court.

Now serving as a Justice with the Texas Supreme Court, Harriet encouraged the graduates to always test their limits. "If you don't live life on the edge, you'll never see the view," she said. She also advised the graduates to use the strength and diversity of those around them.



Left to Right: Jocelyn Buckner, Jenny Woodruff, and Neal Millikan are the first graduates of the Nisbet Honors Program at Converse College. The program, named for Marian McGowan Nisbet '62, was established in October 2000 to provide academically gifted students the challenge and community needed in order to grow to their full potential.

Comme



"As roots grow, so does the tree. Your roots are your family and friends-neglect them and you'll wither; nourish them and you'll flourish."

The second honorary degree recipient was Mireya Moscoso, President of Panama. President Moscoso, the only female head of state in the Western Hemisphere, spoke of discrimination many women throughout the world continue to experience. "The discrimination many of us face is unacceptable, especially when we have the opportunity to exercise political and economic power. We must continue to fight these and future battles with determination and energy."

"These women embody the spirit of leadership and service that we strive to instill in all Converse students," said Converse president Nancy Oliver Gray. "As we say farewell to the Class of 2001, we want to leave them with inspiration from women who have followed and achieved great dreams."

Mary Mildred Sullivan Award-Student Recipient

Each year, Converse recognizes a student who has demonstrated



exemplary citizenship through positive influence and special achievements within the community. While earning her Bachelor of Science degree in accounting, Nicole Johnsey '01 has distinguished herself both in her field of study, and in her leadership and service to the community.

She served as the president of the Student Government Association, representing all students on the Converse College Board of Trustees. During her tenure as president, she coordinated a student-led initiative to present to the administration a vision document which describes a thorough assessment of the college from a student perspective. Nicole organized the most outstanding Partner Day event in the College's history and led a very successful campaign for the Susan G. Komen Breast Cancer Foundation.

Nicole also places a strong emphasis on her faith and has been very involved in religious community outreach. She informally gathered a group of students to feed impoverished citizens and she organized an effort to refurbish the College's chapel.

Mary Mildred Sullivan-Community Award

Karen Hubbard Mitchell was honored for her un-selfish willingness to serve the worlds of education, family health, the arts, and civic duty. Throughout her life, Karen has given freely of her tremendous leadership talents and compassion to numerous organizations and associations.



In recent years, Karen has served on several boards including the Family Care Council, the United Way of the Piedmont, and the League of Women Voters in Spartanburg County. She has also served in key leadership positions for Leadership Spartanburg, the Spartanburg Women's Political Caucus, the Spartanburg County Consensus Project, Healthy Spartanburg, the Girl Scouts of the Piedmont Council, and the Spartanburg Music Foundation.



Kathryne Ameila Brown Award

Melissa Walker, Assistant Pro-

fessor of History & Politics, was presented with the Kathryne Amelia Brown Award. The award recognizes a faculty member who has excelled in the classroom.

Elford C. Morgan Award

Dawn Renee' Gates '01 and Nitu Bagchi '01 were awarded the Elford C. Morgan Award. Named for Elford C. Morgan, who served Converse from 1932 to 1959 as a Professor of English and Dean of Administration, the award is given to seniors with the highest academic record in the College of Arts and Sciences.



Pi Kappa Lambda Award

Jennifer Ann Woodruff '01 was awarded the Pi Kappa Lambda Award. The award is given to the senior with the highest academic record in the Petrie School of Music.



Graduation 2001

CONVERSE

Converse Unveils \$75 Million Campaign During Founder's Day 2001



Mary Rainey Belser '69 announces *The Campaign for Converse: Building for the Future* during Founder's Day 2001.

On April 19, during Founder's Day celebrations, Converse College unveiled "The Campaign for Converse: Building for the Future." This bold \$75 million fundraising effort is the largest in the

College's history. Since the campaign began in 1997-98, over \$63 million has been committed to this effort.

"We are striving to be the college of choice for women in the South," said Converse President Nancy Oliver Gray. "The Campaign for Converse will ensure the College has the resources to reach this goal."

The carefully planned Campaign for Converse is a far-reaching effort that will touch virtually every aspect of the College. The campaign pie is divided into thirds: \$27 million for the endowment (scholarships, faculty & staff development, and academic programs); \$27 million for campus enhancement projects (renovations of selected existing buildings and construction of new ones); and \$21 million for the Converse Fund.

Endowment

Growth of the endowment is vital both to Converse's immediate success and long-term strength, and will enable the College to compete successfully with its peers, many of whom have significantly larger endowments. The endowment will produce income for more scholarships, endowed chairs for selected professors, and strengthened academic resources and programs.

Campus Enhancement Projects

The Campaign's impact is already seen in campus enhancements. The Sally Abney Rose Physical Activity Complex and Weisiger Center will be dedicated in September, and the expansion of the Milliken Fine Arts Building is proceeding. We will soon begin construction for the Phifer Science and Technology Building, as well as renovations to the Montgomery Student Activities Building and the residence halls. We must continue this momentum to create an attractive campus for future students.

Converse Fund

Approximately 15% of the College's annual operating expenses are covered by Converse Fund gifts from alumnae and friends of Converse. For example, recent Converse Fund gifts have provided student scholarships, funded new computer acquisitions, and supported faculty development. Every gift to the Converse Fund, no matter the size, is vital to the College's overall financial good health.

The Campaign for Converse, while representing one of the greatest challenges in the College's history—also represents one of its most exciting opportunities. For the campaign to succeed, we need all alumnae, parents, and friends of the College to participate in this exciting effort.

Founder's Day 2001 featured three speakers from the Class of 2001, who addressed the three ideals as set forth by Dexter Edgar Converse in 1889. From left to right: Wileshea Davis, whose topic was "To See Clearly"; Jenny Woodruff, whose topic was "To Act Justly"; President Nancy Gray, and Kassi Reynolds, whose topic was "To Decide Wisely."





(from L to R) Shea Stellar '01, president of the Art Club and graphic design major; President Nancy Oliver Gray; Roger Milliken representing his wife, Justine V.R. "Nita" Milliken; Mary Belser '69, chairman of the Development Committee and incoming chairman of the Board of Trustees; Kurt Zimmerli, chair of the Buildings and Grounds Committee; Joe Ann Lever, Dean of Arts and Sciences; and Elizabeth Oswald '02, incoming president of the Art Club.

Construction Spreads Across Campus with Second Groundbreaking in Two Years



Mayo "Mac" Boggs, Chair of the Art Department

Converse broke ground for the Justin V.R. "Nita" Milliken Wing of the Milliken Fine Arts Building during an afternoon ceremony on Thursday, April 19, in conjunction with the Founder's Day celebration. Roger Milliken represented the Milliken family at the event.

Funded by an initial gift of \$2 million by Mrs. Justin V.R. "Nita" Milliken, the new wing will provide an additional 14,000 square feet to the existing building. Construction is scheduled to be completed by February, 2002. The expansion is part of the five-year campus master plan that is being implemented at Converse, and is the second groundbreaking in two years after a quarter of a century without a new building project.

Mayo "Mac" Boggs, Chair of the Art Department at Converse, said the

expansion should provide plenty of room for continued growth of the department. "We break ground for the new expansion 31 years after dedicating the original Milliken Fine Arts Building. Since that time, the art program has quadrupled and our faculty has doubled in size. The expansion will give us room as we continue to spread our wings." It will house lecture studios, a computer-aided design (CAD) lab, darkrooms for photography classes, faculty loft studios, kiln and firing yards, an additional art gallery, and a historic preservation room.

Converse's Milliken Scholars visited with Roger Milliken following the groundbreaking ceremony.



Julia Jones Daniels '53 presents Bill Barnet with the Dexter Edgar Converse Award.

Visionary Honored with Dexter Edgar Converse Award

During the annual Thousand Thanks donor gala, Bill Barnet was presented with the 2001 Dexter Edgar Converse Award, the highest honor bestowed by Converse College. Named for the College's founder, the award is presented to an individual who has provided continuous and substantial service through abundant time, energy, and care.

Since he was first elected to the College's Board of Trustees in 1988, Bill has provided key leadership that has resulted in numerous achievements for Converse. Bill's wife, Valerie, enthusiastically joins him in his support of the College and was named an honorary alumna in April. "Bill and Valerie both have an uncanny ability to see the possibilities and make them a reality," said President Gray. "Bill has been a driving force in maintaining the momentum of our campaign and campus master plan. The Barnets have touched the lives of many people here at Converse."

The Barnets continue to serve as strong ambassadors for Converse, and support her to this day. In 1999, the Barnets initiated the Converse Challenge, pledging \$3 million if the College meets its \$75 million goal by June 2003. Bill also serves as chairman of The Campaign for Converse: Building for the Future.



Larrysa Martin '01 and Pam Davis, Director of Student Activities, serve guests at a soup kitchen in Washington, D.C.

Converse Students Forsake Beaches for Spring Break Mission Trip

The mere mention of the words “spring break” can instantly bring vivid images to mind.

For many of us, beach trips, cookouts with family and friends, or just relaxing around the house could very easily top our to-do list. But for nine Converse College students, Spring Break '01 meant traveling to Washington, D.C. to lend a helping hand to those who need it most. Operating just blocks from the White House and the Houses of Representatives—the very center of power—the Converse students were able to see the ironic picture of power and poverty existing so close to one another.

The Center for Student Missions (CSM) coordinated the schedule of activities for the Converse group. A mission-based organization with outlets in inner-cities throughout the country, CSM strives to feed the hungry, clothe the poor, visit the sick, and reach out to the stranger. With the D.C. homeless population estimated to be somewhere between 20,000-40,000, the need for help is strong.

“We began each morning at the Third Street Church of God,” said Wendy Stokes '01. “After helping to lead a worship service for the homeless, we served breakfast and got to know them a bit more.” Stokes, a financial management major,

came to appreciate her own lifestyle and realized her blessings. “It’s very easy sitting in my comfortable room at home thinking I’ve got problems, but once you meet these folks and see how they live, you’re taken out of your comfort zone and know what true hardship is,” she said.

Larrysa Martin '01, a deaf education major, noted that there was not one singular cause or path that lead the homeless to their current state. “Almost everyone we spoke with had different experiences in life that caused them to be homeless. Some had drug problems, some alcohol problems. Others had none of that. One man I spoke with had once been a prominent lawyer who had gone through a divorce that had wiped him out financially.”

The spring break mission trip to Washington has become a tradition at Converse and is open to all students, regardless of class year, major, or denomination.

New Professorship for Interior Design

A significant gift recently made through a charitable remainder unitrust by Carrie Cathcart Owings '33 will enable Converse to attract and retain the most talented faculty in interior design. The Carrie Cathcart Owings Endowed Professorship in Fine Arts will further strengthen the career opportunities for interior design majors as an accomplished professor can help drive the curricular needs to best meet the career requirements.

“This is a model expression of Mrs. Owings’ commitment and love for Converse,” said Scott Rawles, Vice President for Institutional Advancement. “Mrs. Owings values her Converse education and this gift serves an important purpose: securing the best possible faculty for Converse.”

The flexibility of a unitrust gift has made it a popular form of giving. Because the unitrust is a deferred gift, it allows the donor to make a major donation of securities, but keep the income generated

from those assets and receive an up-front tax deduction. For more information about the concept of a unitrust, contact Scott Rawles at (864) 596-9217.



President Gray joins President Moscoso and members of the Panamanian government during the economic development presentation for Spartanburg area business leaders.

President of Panama Visits Converse

Mireya Moscoso, President of the Republic of Panama and the only female head of state in the Western hemisphere, traveled to Converse on May 18, 2001 to receive an honorary Doctor of Laws during the 109th commencement exercises. During her visit, President Moscoso attended a reception with area business leaders at Converse to discuss economic development in Panama. Accompanying Moscoso were the Panamanian Minister of Commerce and Industry, the Minister of Economy, and the Minister of Government and Justice.

Born in Panama, Mireya Moscoso grew up in poverty - the daughter of a school-teacher and one of 6 children. As a young woman she met Dr. Arnulfo Arias, who had been elected twice as president only to be ousted in military coups, and worked

Manuel and Emily Vallarino '65, a member of the Converse Board of Trustees, were key in planning President Moscoso's visit to Converse. Below are the Vallarinos with President Moscoso, center, for dinner at the Spartanburg Country Club.



on his campaigns. After his third presidential election and subsequent ousting, Arias fled to the United States. Moscoso joined him here and they were married in 1969.

In 1990, Moscoso helped to create and

soon became President of the Arnulfista Party in Panama. She became the main opposition candidate in 1994, taking on the Revolutionary Democratic Party, and was elected as Panama's first female President in 1999.

"Mireya Moscoso is a great role model for Converse students. Her visit offered a rare opportunity for them to witness first-hand the obstacles they can overcome in achieving their dreams," said President Nancy Gray.

Converse Honors Professor with First Annual O'Herron Award for Faculty Excellence

David C. Zacharias, Associate Professor of Art, has been named as the first recipient of the O'Herron Award for Faculty Excellence at Converse College. The award was established to recognize faculty members who demonstrate exceptional teaching effectiveness, creativity, mentoring and advising, involvement in student-related activities, and achievement in research and publication.

Zacharias's (better known as Zach) ceramic pieces have been in more than one hundred shows and competitions, including twenty solo exhibits and several

national and international shows, and have won numerous awards. Recently, one of his pieces appeared in *Clay Times*, an international ceramics publication. He has conducted workshops and served as a juror or guest lecturer at the University of South Carolina in Columbia, the University of South Carolina at Spartanburg, and Winthrop University. He has been recognized as an excellent teacher by Converse as recipient of both the O'Herron award and the Kathryn Amelia Brown Teaching Award, and also by Ghost Ranch in New Mexico when he

was selected to be the Academic Dean for Winter, 1998.

Students in Professor Zacharias' classes learn much more than art. They learn about the physics and chemistry of the medium with which they are working, and they learn how to photographically document their work on an artist's budget. Perhaps more than anything else, Zach pushes his students to be creative - for example, they can be seen carrying 2 x 4 pieces of wood everywhere they go while learning to think about their material in a new way in his 3-D design class.



David Zacharias with his wife, Dr. Eun-Sun Lee, Assistant Professor of Violin, and son, Emmett; President Gray; and Patty O'Herron Norman '69, who presented the O'Herron Award for Faculty Excellence.

Janis Dengler



(written by Dr. Spencer Matthews, Associate Professor and Chair of Psychology)

Janis Dengler's tenure at Converse College illustrates what is best in a teacher: respect for her discipline and an insistent but gentle prodding of her students to do all that their potential allows.

Janis was born in Wheeling, West Virginia and received her collegiate education at Ohio University and Connecticut College. She later taught at Penn State University before joining Converse College. Her thoughtful and careful leadership has made Janis' name synonymous with Converse since she joined the faculty in 1960. Since that time, she has taught dance and physical education classes, and served as Athletic Director.

Her sustained dedication to her discipline is evidenced by the extra time she has contributed to the development of her students in the form of Dance Ensemble recitals. Janis has even shown her commitment to the health of her colleagues in the form of aerobics classes extending even through the summers.

Perhaps the most meaningful acknowledgement of her achievements occurs every spring, when many of her former students return to campus to attend, choreograph, or participate in the Dance Ensemble recitals. This seems all the more remarkable in light of the fact that they return to participate in what was for them an extracurricular event, not a requirement for an undergraduate major or a professional event.

Gayle Magruder



(written by Dr. Sharon Lambert, Associate Professor and Chair of Chemistry)

Since joining Converse College in 1967, Gayle Magruder's dedicated service has taken her from the classroom, to the swimming pool, and then to the committee room.

Because of her natural leadership abilities, Gayle has served on many (and we do mean MANY) committees—Faculty Research and Development, Faculty Student Relations, Admissions, Special Events and Lectures to name a few. She was elected to the Faculty Senate for several terms and served as its President from 1991-93. She chaired both the Tenure and Promotion and the Faculty Administrative Advisory Committees. And for many years, she has guided incoming students as a Freshman Advisor.

While at Converse, Gayle has built an outstanding swim program and endeared herself to countless students. Along with indulging their love of swimming, the students have learned leadership, team building, persistence, dependability, and hard work—traits to last a lifetime. The Tarpon Shark synchronized swim team has provided this opportunity for many students. In addition to the yearly show, Gayle and her teams have participated in intercollegiate events through the National Institute for Creative Aquatics, have directed the Pre-College program for young children in the Spartanburg community, and have even appeared in a movie. Adding in the number of students who have worked their way through lifeguard training and water safety instructor training, it is crystal clear that "Ma" has had a tremendous impact on the lives—and summer jobs—of our students.

A Farewell

to Retiring

Rosa Shand



(written by Dr. Charles Morgan, Associate Professor of English)

When Rosa Shand arrived at Converse in the fall of 1985, she brought something new and different to our world. And while she was about it she brought a deep and sincere love of the arts. Literature, of course, but all the others as well. This love she insisted in sharing with her students, subtly indoctrinating them in a recognition that the arts are essential for one's humanity. She may have been hired to teach English, but once inside the gates she was a cultural fifth columnist.

Another part of her job description was to teach creative writing. Under her leadership the English Department began to take advantage of Elizabeth Boatwright Coker's generosity to our creative writing program.

So, over the years Rosa Shand quietly contributed in a variety of ways, always with a charm and grace that we know date back to her South Carolina origins. And during that time for her writing students she was modeling the words, "Do what I do, not just what I say."

Slowly at first, with all the early frustrations and rejections, Rosa began her writing career. The acceptance letters began to arrive—and then the awards—and finally the ultimate: the AGENT! What followed, as we say, is history. Her first novel, "The Gravity of Sunlight," appeared on the *New York Times* Best Sellers List, and continues to receive glowing reviews.

And so, it is time for Rosa Shand to return to the larger world from which we received her.

A Christmas Gift that Benefits Converse Students: "Nothing Like an Old Friend"



Share the heartwarming stories and toe-tapping songs of Converse alumna and recording artist Daryle Ryce '75 with your friends and family for Christmas! "Nothing Like an Old Friend" was recorded at Daryle's live performance at Converse this past spring. The CD and VHS recordings are hot off the press, and proceeds directly benefit the Hayward Ellis Theatre Scholarship Fund at Converse.

Complete the order form below and return with your check or credit card payment to:

Daryle Ryce Order c/o Development Office
Converse College
580 East Main Street
Spartanburg, SC 29302

Orders will be shipped upon receipt. Please allow 2-4 weeks for delivery.

"Nothing Like an Old Friend" Order Form

Name _____
Address _____
City, State, Zip _____

of CDs @ \$20 _____
of VHS @ \$45 _____
of CD/VHS sets @ \$60 _____
Total \$ _____
(cost includes shipping and handling)

check enclosed VISA MasterCard
Card # _____
Expiration date _____

Honor Retired Faculty with Your Gifts

EDITOR'S NOTE: The contributions of Janis Dengler, Rosa Shand, and Gayle Magruder will forever be remembered at Converse College. In their honor, the College has established special opportunities to show appreciation for them:

- To honor Janis Dengler, you can contribute to the Janis Dengler Endowment for the Support of the Dance Ensemble.
- Gayle Magruder may be honored by a contribution to the Gayle Magruder Fund for the Renovation of the Montgomery Pool.
- You can honor Rosa Shand by contributing to the Retirement Faculty Scholarship Fund.

Name: _____
Address: _____
City, State, Zip: _____
Telephone: _____
E-mail: _____
Class Year: _____

Retired Faculty Scholarship Fund Janis Dengler Endowment
 Gayle Magruder Fund

Please make my gift in honor/memory of _____

Send this form with your check to:
Converse College
Retired Faculty Scholarship Fund
580 East Main Street
Spartanburg, SC 29302

Faculty & Student Accomplishments

Faculty Accomplishments

Ansley Boggs was the recipient of a National Educator's Award given by the P. Buckley Moss Foundation for developing effective strategies for using art in the instruction of students with disabilities. Dr. Boggs is the creator and director of the "Converse College All-Stars Camp," a summer tutorial program for learning disabled students.

Haven Hart, Dean of Students, was awarded the Bob E. Leach Award for Outstanding Service to Students. The award, given by the National Association of Student Personnel Administrators Region III, is one of the highest honors for student affairs professionals in the region.

Steve Hunt, Assistant Professor of Theatre, had his original play, "A Veiling," to be selected as one of 25 from a national field to participate in the Last Frontier Edward Albee Theatre Conference in Valdez, Alaska

Keith Jones, Assistant Professor of Voice, recently sang the title role in "Jesus Christ Superstar" in Norfolk, VA. He also sang with the newly-formed professional chorus, "The Carolina Chamber Chorale," who recorded a CD, presented an Opera Gala, and recorded a large amount of synagogue music for the Milken Archive. The group also commissioned and premiered "A Dubose Heyward Triptych," in which Jones performed the tenor solos.

Recent solo performances by **Eun-Sun Lee**, Assistant Professor of Violin, include recitals for the Chester County Arts Council, the Isle of Palms Concert, and Piccolo Spoleto.

Tom McDaniel, Provost and Vice President for Academic Affairs, served as commencement speaker this May at Brenau University. Additionally, he has written 12 articles for *Academic Leader* and has published a school law article entitled "The Search and Seizure Conundrum" for *Teaching for Excellence*.

Teresa Prater, Associate Professor of Studio Art, was selected by the City of Spartanburg and the Arts Partnership for the Cultural Exchange Program in Winterthur, Switzerland. She also received Residential Fellowships at the Virginia Center for the Creative Arts in Sweet Briar, Virginia and the Hambridge Center in Rabun Gap, Georgia.

Scott Robbins' composition, "Passage," for piano and women's choir, is one of three prize-winning works in the New York Treble Singers 2001 Composition Competition. "Conjure Something Glowing," for orchestra and chorus, premiered at the Sparkle City Music Festival on April 28. Robbins is Chair of the Department of Music History, Theory and Composition.

The Gravity of Sunlight by **Rosa Shand**, Larrabee Professor of English, was awarded the Jesse Jones Award Best Fiction and the

Stephen Turner Award for Best First Fiction, the first time the same book has won both awards. The paperback edition was released in June and is on the July/August list of recommended books for independent bookstores. Additionally, Shand was recently named a winner of the South Carolina Fiction Project for the 6th time.

Melanie Foster Taylor will be directing the first Piano Pedagogy Institute at the Brevard Music Center this summer. Dr. Taylor is Assistant Professor of Piano Pedagogy.

Melissa Walker, Assistant Professor of History, has received a grant from the John Hope Franklin Research Center for African and African-American Documentation at Duke to research oral histories of rural African-Americans.

Jeff Willis, Andrew Helmus Distinguished Professor of History, has been elected to serve as president of the Spartanburg County Historical Association.

Andrea Wyrosdick, Director of Residential Life and Judicial Programs, was named New Professional of the Year by the South Carolina College Personnel Administrators.

Paula Morgan, Director of the Alia Lawson Pre-College, was honored by her peers with the Spirit of Converse award during the annual faculty and staff appreciation luncheon.

Student Accomplishments

Danielle Baker '04 was among 20 students from the U.S. to participate in a nine-week internship in Dublin, Ireland with the World Harvest Mission.

Renee Coffman '02 received a South Carolina Colleges and Universities Undergraduate Research award for her work on the "Arkrigh Project." This national pilot program on minority area environmental justice hazardous cleanup is based in Spartanburg.

Michelle Evans '04 was one of 12 people accepted into the Opera Carolina summer program in Charlotte, NC. She will be performing with the group for three weeks.

Teri Ann Johnson, a graduate student in the Petrie School of Music, claimed first place honors in the vocal component of the recent Athena 2001 Festival and Competition at Murray State University.

Nikki Maples '99 and **Edna Steele**, Assistant Professor of Biology, presented a paper titled "First report of the occurrence of *Cyclustera ibisae* (Cestoda:Dilepididae) larvae in the mummichog, *Fundulus heteroclitus* from South Carolina" during the 2001 meeting of the Southeastern Society of Parasitologists in Berry College, Georgia.



A Converse Mystery

SOLVED

by Dr. James Harrison, Associate Professor of Classics and Archivist

In 1989, one of many activities during the celebration of Converse College's centennial was the opening of the time capsule in the cornerstone of Wilson Hall. After Main Hall, as it was known then, burned on the night of January 2, 1892, the decision to rebuild was made quickly and the cornerstone for the new building was laid on Dexter Converse's birthday, April 21, 1892. The time capsule in that cornerstone contained a great variety of items, among them an 1890-91 college catalog, a sterling silver spoon engraved in the bowl with a rendering of Main Hall, and a handwritten statement from Mr. Converse to future generations.

One item, however, was particularly intriguing. This was a sealed envelope which had written on it "A letter from T.A. Irwin to his children's children, care of the Converse College cornerstone." Inside of this envelope, which was opened in 1989, was another, labeled "Deliver please to my kin of my own blood through my children if there be any - else to that of my brothers or sisters. - T.A. Irwin." This envelope was left sealed.

The question was, of course: who was T.A. Irwin and did he have descendants; also, what, if any, was his connection to Converse? At the time, in 1989, none of this could be figured out, so this envelope, along with the other materials from the cornerstone, was sent for safekeeping to Mickel Library. In 1996, thanks

to a generous grant from the Daniel Foundation, Converse got a fine archival facility. Our first intern was Autumn Gorsuch Cervantez '98. She inventoried the contents of the time capsule and put them into archival storage. That might well have been the end of this story. Mr. Irwin's letter now lay in Box 1, safely stored - and forgotten. It was a classic case of "out of sight, out of mind." That is, until Carla McKelvey Clausen '81 came back this Spring to her 20th Reunion. While walking on campus she and her husband Gary noticed the bronze plaque at the cornerstone of Wilson Hall, which states that "the contents of the original time capsule are located in the Mickel Library Archives." Carla and Gary asked me to show them the contents of Box 1 - and there was Mr. Irwin's letter.

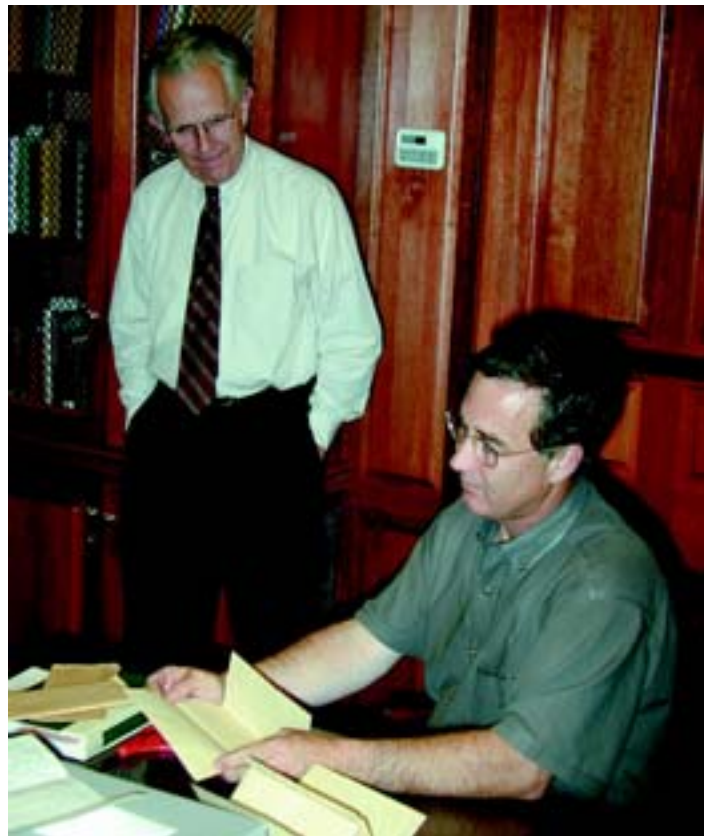
I became quite determined to solve this mystery. But how? Well, I asked my friend Walton Beeson for help. She is a native of Spartanburg and has a keen interest in local history and in Converse. Her mother, Betty Phifer Carlisle '29, and her grandmother, Mary Hardy Phifer '98, were graduates as was her aunt, Louisa Bobo Carlisle '15, who for years was the Librarian here. Walton suggested that I call Mrs. Betty Irwin, the Irwin family historian, and mother of Elizabeth Irwin Carlisle '76. Mrs. Irwin led me to Thomas Irwin Dashiell, Jr., great-grandson and namesake of Thomas A. Irwin. A group of us met here in the Coker

Room of the Archives, and after 109 years the letter was properly delivered, on May 15, 2001.

The letter is long and full of information about Mr. Irwin's family. There is also much in the letter about life in Spartanburg at the time. Mr. Irwin himself comes across as a truly fine man. Tom Dashiell, who descends from Mr. Irwin through his daughter Elizabeth, a student here in 1903-04, plans to have the letter printed and distributed to the family.

Of further interest is the fact that the cornerstone also contained the only known photograph of T.A. Irwin's father, William Irwin. William Irwin, an 1840 graduate of Trinity College in Dublin, Ireland, was an associate of the Rev. John McCollough. These two men, at different times, owned this property which was later to become Converse College. So: a Converse mystery is solved.

Dr. James Harrison excitedly looks on as the contents of the mystery letter are revealed by Thomas Irwin Dashiell, Jr., great-grandson of T.A. Irwin.





2001 ALUMNAE AWARDS

Career Achievement Award

Suzanne Cameron Linder '61

Career Achievement Award-Music

Penelope South Kosztolnyik '61

Converse 100 Award

Lee Taylor Boyd '76

Converse 100 Award

Sally Jeter Hammond '81

Community Service Award

Susanne Cole Wean '71

Distinguished Alumna Award

Doris Marley Laird '51

Mae Elizabeth Kilgo Spirit Award

Kitty Oldham Young '66

Star Award

Linda Frierson Perrow '81

Honorary Alumna

Valerie Manatis Barnet

More than 350 alumnae and friends returned to Converse to share memories, old and new, at Reunion 2001 - making it the largest reunion in the College's history! The weekend drew members of the Golden Club and the classes of 1946, 1951, 1956, 1961, 1966, 1971, 1976, 1981, 1986, 1991, 1996 and 2000. Events included the Golden Club luncheon, the All-Class cocktail party, a performance by the Converse Dance Ensemble, a play in the Hazel B. Abbott Theatre, coffee and chat with professors, the alumnae memorial service, the dedication of a sculpture in honor of Mary Lib Spillers Hamilton '57, class meetings, dedication of Wilson Lobby in honor of Mary Helen Garrison Dalton '46, Alumnae Day awards luncheon, presentation of the Class of 2000 gift to Converse, career networking, hard hat tours of the Sally Abney Rose Physical Activities Complex and the Weisiger Center, the alumnae recital, and class dinners.

(photos at top, left to right)

Class of 2000 Gift to Converse

The Class of 2000 donated a stained glass window, which is a replica of the stained glass rose window that once hung in the tower of Main Hall. Susanna Knight '00 and Kiley Rikard '00 unveiled and presented the rose window to Converse during the Alumnae Day luncheon on Saturday.

Wilson Lobby Rededicated to Mary Helen Garrison Dalton

Also during alumnae weekend, the lower lobby of Main Hall, including Lee and Stackhouse Parlors, was dedicated to Mary Helen Dalton '46. The areas were recently restored through Mary Helen's generosity, and were dedicated in honor of her 55th reunion year. Mary Helen Garrison Dalton (center) is pictured with her daughters, Mary Gossett Dalton King '75 (left) and Nancy Brice Dalton Steele '73 (right).

Alumnae Honor Mary Lib Hamilton's Service to Converse

Mary Lib Spillers Hamilton '57 was honored during reunion with the dedication of a replica of the clock tower, commissioned in her honor by artist and alumna Berry Bate '75. Mary Lib served as Director of the Converse Fund, Director of Development, and Director of Alumnae from 1990-2000. She is pictured with her family at the dedication.

(photos opposite page, left to right)

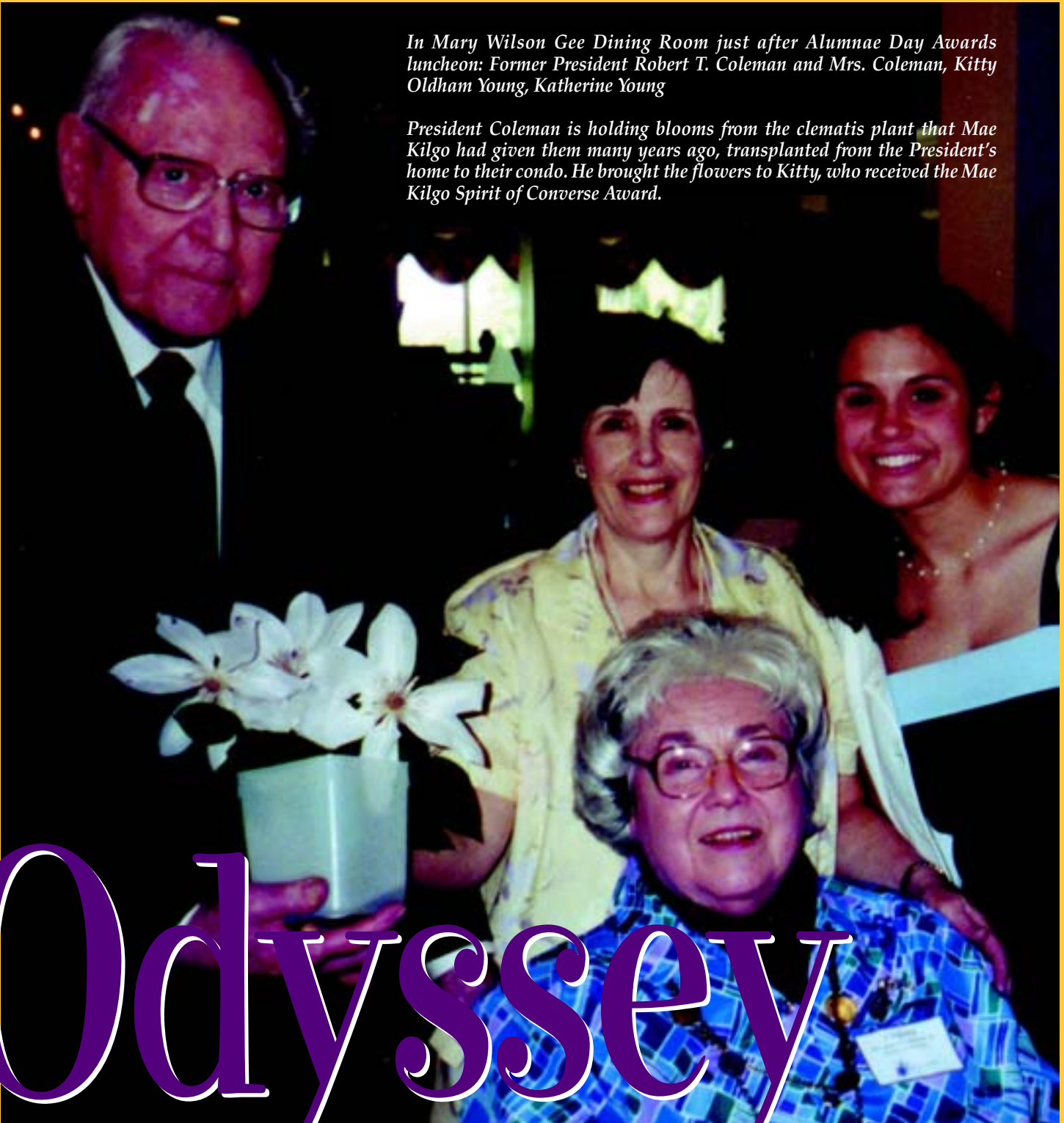
Golden Club luncheon, Alumnae Day awards luncheon, the alumnae recital performers.

A Reunion



In Mary Wilson Gee Dining Room just after Alumnae Day Awards luncheon: Former President Robert T. Coleman and Mrs. Coleman, Kitty Oldham Young, Katherine Young

President Coleman is holding blooms from the clematis plant that Mae Kilgo had given them many years ago, transplanted from the President's home to their condo. He brought the flowers to Kitty, who received the Mae Kilgo Spirit of Converse Award.



Odyssey

alumnae

ews



Dear Friends,

Having just returned from a wonderful alumnae weekend at Converse, I am thrilled to report that we held our largest reunion ever! What a grand celebration of friendships and our college. Accepting the position of your alumnae president is such an honor, and as well a responsibility, and I look forward to the opportunity of further serving my alma mater.

When asked my vision for the next two years the first and foremost thought that comes to mind is participation.

- **Participate locally** – attend your area club functions
- **Participate nationally** – keep in touch, write to your class representatives and let us hear from you in our bulletin
- **Participate vocationally** – network to further your careers and family
- **Participate in growth** – assist us in our recruitment process "C.A.R.E." (Converse Alumnae Recruitment Effort) by sharing our Converse story. . . spread the word about what Converse has to offer future generations
- **Participate in development** – give what you can. . . stretch especially now that we have a matching challenge!!!
- **Participate in fun** – be active and serve

Come witness our growth as we raise the bar and strive for excellence. Just as Wayne J. Holman stated at my opening convocation freshman year in the fall of 1971, "The only way to combat the tendency toward mediocrity that exists in almost every facet of the national science is to strive for excellence."

Remember, we are an extended community and we have an obligation to carry on our traditions. . . so participate!

Have a wonderful summer!


Elise Warren '75
President, Converse Alumnae Association

Swiss Winter Escapade



Travel with the Converse College Continuing Education Department

NEW YORK 2001
November 8-11

Spend a weekend in New York with students, faculty, alumnae, and friends on November 8-11, 2001. The trip includes three nights accommodations at the Wellington Hotel, roundtrip airfare, airport ground transportation to and from hotel, baggage handling, tips, and admission to the Broadway play "The Producers," a new Mel Brooks musical starring Nathan Lane and Matthew Broderick. Cost is \$875 based on double-occupancy. Assistance will be provided for travelers wishing to purchase tickets to the Radio City Christmas Spectacular or additional plays.

For more information, contact the Continuing Education Office at (864) 596-9147. Also, look for upcoming information on trips to Paris, Amsterdam, and other exciting locations sponsored by Converse Continuing Education.

Travel with the Converse College Alumnae Office Through Alumni Holidays International

SWISS WINTER ESCAPADE
February 8-15, 2002

Spend a fabulous week in the winter wonderland of Interlaken, Switzerland, the gateway to the Bernese Oberland! Located in the center of the Jungfrau Region, Interlaken is surrounded by a superb mountain panorama, highlighted by the world-famous peaks of the Eiger, Mönch and Jungfrau. Snow-covered Alps, a stunning winter landscape, excellent skiing, great shopping and cultural opportunities, and some of Switzerland's most famous towns and cities make this an exciting travel experience. Accommodations include six nights at the Five-Star deluxe Victoria-Jungfrau Grand Hotel & Spa. Cost: approximately \$1,495 per person, from Atlanta, based on double occupancy.

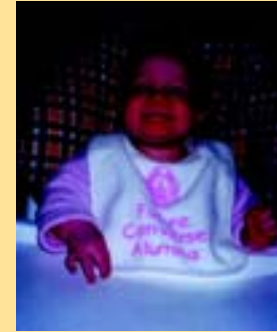
ALUMNI COLLEGE IN SPAIN
July 1-9, 2002

(Jointly sponsored by the Wofford College Alumni Office)

Southern Spain's storied treasures will easily be accessible from the lovely village of Úbeda, your campus abroad site where accommodations include seven nights at the first class Hotel Ciudad de Úbeda. This trip includes three full meals each day, informative educational programs, excursions to Córdoba, Cazorla, Baeza, and Granada, and the services of an Alumni Campus Abroad Campus Director throughout your trip. To add an extra element of excitement, the Converse College Alumnae Office has teamed up with the Wofford College Alumni Office to plan this travel opportunity. Cost: approximately \$2,095 per person, from Atlanta, based on double occupancy.

For more information, call Melissa Jolly, Director of Alumnae, at (864) 596-9055.





Alumnae Office Provides Special Gifts for the Newest Members of the Converse Family

A new Converse tradition has been born! We are celebrating the births of alumnae children by giving Converse baby bibs. For girls, a pink bib with "Future Converse Alumna;" and for boys, a blue bib with "My Mom went to Converse." So far this year, we have mailed 135 bibs! Be sure to notify the Alumnae Office of births so that we may

update your records and provide your little one with this special Converse memento. Also, stop by the Alumnae Office to see our bulletin board of photographs. Pictured above are a few of our happy new additions sporting their nifty new bibs (from left to right): Katherine Laney Peebles, daughter of Lib Laney Peebles '78, granddaughter of

Georgia Free Laney '51; and niece of Georgia Laney Morrison '90 and Mary Laney Tatum '76; Hugh Turner Asherman and Philip Lanford Asherman, twin sons of Ellen Lanford Asherman '85; Heyward "Luke" McPhail, son of Molly Chappell - McPhail '91; and Carter Elizabeth Cheek, daughter of Anna Snow Cheek '96.

Alumnae Weekend 2002

Something a little different next year...

**Come back to Converse!
April 26-28, 2002**

If your class year ends in a two or seven, you will be having a special reunion next spring! Converse welcomes all Golden Club members and the classes of 1937, 1942, 1947, 1952, 1957, 1962, 1967, 1972, 1977, 1982, 1987, 1992, 1997, and 2001. Special activities are being planned for a fun-filled weekend and there is much new to see on campus. In addition to the "reunion classes," we have something a little different planned. We hope that EVERY alumna of Converse will join us for part of Reunion Weekend 2002! This will provide an opportunity for alumnae from different classes to join together. Save the dates: April 26-28, 2002!

For more information, contact Elizabeth G. Simons, Associate Director of Alumnae, by e-mail at elizabeth.simons@converse.edu or by phone at (864) 596-9058.

BE OUR GUESTS!

**Converse-Wofford Couples
Wofford Homecoming**

Mark your calendar for something NEW!

Drop by the Converse College Hospitality Tent
Saturday, October 6, 2001

11:00 am - 1:30 pm

Wofford College campus, Evins Street Parking Lot

**For more details or to make reservations call:
(800) 584-9098 or (864) 596-9055**

This event is being sponsored by the Converse College Alumnae Office.



MEMORIAL AND HONOR GIFTS

MEMORIAL GIFTS

Gifts were made to Converse College in memory of the following individuals (February 1, 2001 to May 31, 2001):

BILL BOUKNIGHT
Professor Joan R. Foss

PHYLLIS DUPILLE CAUBLE '48
Mr. W. L. Cauble, Jr.

CEMA CHREITZBERG CHAPMAN '34
Mrs. Joan Chapman Deifell '64
Ms. Cema Chapman Powell '59

BETTY BURGDORF CURETON '58
Dr. Kappy Derrick Cannon '83
Mrs. Anne Ferguson Caughman '58
Mrs. Kathryn Lemon Clark '60
The Club
The Columbia Tennis Center - Team #2
Dr. and Mrs. Charles E. Corley III
Mr. and Mrs. William Elliott DeLoache, Jr.
(Molly Ariail '58)
Mrs. Elaine Folline Epting '81
Mrs. Catharine Nunnamaker Fletcher '58
Mr. and Mrs. Jack S. Folline
(Elaine Finklea '58)
Mrs. Mary Jane Pearce Holland '59
Mrs. Thomas H. Kepley
Mrs. Frances Hasell LaBorde '58
Mrs. Daisy Barron Leland '58
Dr. and Mrs. William F. Luce, Jr.
(Catherine, Will, Laura Lynn and William)
Mr. and Mrs. Tem McFaddin
(Vandy Major '85)
Mr. and Mrs. Franklyn Owen
(Susan Cunningham '88)
Mrs. Linda Frierson Perrow '81
Mr. Timothy G. Quinn
The Carter Redd Family
(Sarah Adderton '62)

Mr. and Mrs. Donald V. Richardson III
(Betty Anne Nelson '58)
Dr. and Mrs. March E. Seabrook
(Anne Richardson '82)
Mrs. Suzanne Crosswell Short '85
Dan and Laura Stacy
(Laura Johnson '91)
Mr. and Mrs. Cherry D. Stribling
(Katherine Ryan '58)
Mr. and Mrs. Overton Stokes Suiter, Jr.
(Elizabeth Sapp '60)
Mrs. Holcombe H. Thomas
(Barbara Judy '51)
Mrs. Louisa Ellerbe Tobias '45
Mr. and Mrs. Joel W. Townsend
Mr. and Mrs. John M. Webber
(Susan Dukes '70)
Mrs. Nancy Hayes Wilkerson '58
Mrs. Joann J. Woodward
Mrs. Dorothy Hucks LaFitte Woolston '61
Dr. and Mrs. Frank J. Wyman
(Margaret Dick '57)

ELISABETH GILLESPIE EPTING '30
Dr. Jeri DeBois King

MYRTLE HENDRIX FERGUSON
Mrs. James Edward Hooks
(Rosann Ferguson '59)

CHARLOTTE CAUSEY FRIERSON '51
Mrs. Elaine Folline Epting '81
Mr. Henry F. Frierson
Mrs. Linda Frierson Perrow '81
Mrs. Martha Bell Smith '81

VIRGINIA WARE GILLULY '83
Mrs. Elaine Folline Epting '81

ELIZABETH HUBBARD HARRIS '22
Miss Martha C. Harris '50

CATHRYN VANN HOLMAN '39
Mr. and Mrs. William P. Acker

Dr. and Mrs. Jerry L. Acosta
Mr. Louis W. Amis
Mr. and Mrs. Benjamin C. Bishop, Jr.
(Starke Hagood '57)
Mrs. Louisa Tobias Campbell '70
Allen and Jo Capers
Finley and Diane Clarke
Tom and Beth Croft
Fisher Jewelers and Silversmiths, Inc.
Cathy's Forum
Mrs. Julia Easterling Guess '39
Mr. and Mrs. Coleman L. Jeffcoat
Dr. and Mrs. R. Earle Jones
Mr. and Mrs. John A. Kuhne
(Lucy Simpson '66)
James R. and Libby Lingle
Ms. Allison J. Middleton
Mr. and Mrs. Benjamin King Norwood, Jr.
(“Sunshine” Connor '56)
Mr. and Mrs. William L. Otis, Jr.
Mrs. Sally Thomason Russell '66
Dr. and Mrs. Harold E. Shaw, Jr.
Southeastern Concrete Products Co.
Mr. and Mrs. Robert M. Stacy
Mrs. Barbara Stith's 5K Class at
All Saint's Episcopal Weekday School
Mr. and Mrs. Harry Bernard Ussery
(Josephine Carr '61)

MARY STEWART INABNIT
Ms. Mary Karen Clarke '70
Mrs. Brenda Garner Lancaster

LINA JULIA IVEY '10
Mr. and Mrs. William F. Stone, Jr.
(Catherine Roy '66)

MYRA KENNEDY
Mrs. Barbara Hamby Swift '68

BERT B. KNIGHT, JR.
Mr. and Mrs. Edmund Magner Donnelly
(Kathleen Morgan '45)
Vesta and Eddie Haselden

Mrs. Craig Harris McDaniel '65
Mrs. Mary McDaniel Ridgeway '90

WADE HAMPTON MACINTYRE, JR.
Mrs. Ashley Gross Millinor '94

WILL MANNING
Professor Joan R. Foss

WILLIAM C. MAYFARTH
Miss Alice Todd Alderson

WILLIAM BONNER MCCARTY, JR.
Mrs. Dee Jennings Tindal '45

GARY LEE MCCOY
Dean Joe Ann Lever

KATHLEEN NEWBY MCGEE
Mrs. Lalage O. Warrington

ELIZABETH FOX MCMAHAN 1901
Ms. Elizabeth McMahan Adamitis

LESLIE ANN MUZZY '90
Craig and Larry Akins
Dr. and Mrs. Charles D. Ashmore
(Virginia Ogletree '42)
Ms. Rhoda Lucinda Bailey
William and Shelley Baker
George Ann and Greg Bracko
Dr. and Mrs. B. Brant Bynum
Dr. Karen Carmean
Dr. Joe P. Dunn
Professor Joan R. Foss
Mrs. Gwynne Brown Goodlett '90
Ms. Mary Lib S. Hamilton '57
Dr. James G. Harrison, Jr.
Dr. Woodrow W. Hughes, Jr.
Dr. James A. Hymas
Dr. Sharon E. Lambert
Mrs. Brenda Garner Lancaster
Dean Joe Ann Lever
Mr. Roger F. Luttrell
Dr. and Mrs. Nathaniel Magruder
Dr. Thomas R. McDaniel
Mrs. Ashley Gross Millinor '94
Ms. Courtenay B. Mims '04
Mrs. Margaret S. Moore
Mrs. Mary McDaniel Ridgeway '90
Mr. and Mrs. Jack Slemenda
(Katharine Stephens '66)
Dr. Melissa A. Walker
Hank and Simons Welter

JAMES PATRICK
Mrs. Elaine Folline Epting '81
Mrs. Martha Bell Smith '81

H. ANDREW PICKENS, JR.
Mrs. Marilyn Mateer Sherrill '53

FRANK T. PLATT
Dr. and Mrs. Nathaniel Magruder

PAULINE BREEDEN ROGERS '43
Mrs. Sandra Sherard Bethea '67
Mr. and Mrs. William E. Craver, Jr.
Mrs. Eleanor Howard Cummings '43
Mrs. Janelle Griffin Lovett '43

ANGIE FINCH SEARCY
Mrs. Brenda Garner Lancaster

Make Your Gift to Converse in Honor or Memory of Someone Special

To make a memorial or tribute, please send the following information to
The Converse Fund, 580 East Main Street, Spartanburg, SC 29302.

Please inform (Name): _____

Address: _____

City: _____ State: _____ Zip: _____

That a gift has been made to Converse College

In memory of: _____

In honor of: _____

Occasion: _____

By (Contributor's Name): _____

Address: _____

City: _____ State: _____ Zip: _____

Phone Number: _____

Enclosed is my gift of \$ _____

Make checks payable to Converse College.

CONVERSE COLLEGE ALUMNAE BOARD 2001-2002

DOROTHY CHAPMAN SMITH '33
Ms. Bert Hodge
Mrs. Alia R. Lawson
Ms. Emily Lucy Martin '64
Mr. and Mrs. George S. Sullivan, Jr.

ROCKY STILL
Professor Joan R. Foss

ALICE ADELIA SUITER
Ms. Emily M. Ballance
Dr. Judy Gordon Collier '67
Mr. and Mrs. Dan Fuquay
Ms. Anne H. Greenough
Mrs. Alia R. Lawson
Ms. Lynn White Montanari
David and Dee Roberts
Mr. and Mrs. Bruce B. White
Mrs. Katharine Oldham Young '66

JOE R. UTLEY
Mr. and Mrs. M. A. Bhatt
Fred and Joan Butehorn
Dr. and Mrs. J. Sidney Fulmer
(Lenna Moore '63)
Mrs. Dorothy Ormond Grier '50
Mr. Robert E. Howard
Mrs. Alia R. Lawson

DOROTHY AYERS WARD '48
Mr. Lafe P. Ward

WILLIAM BEW WHITE, JR.
Ms. Jean Elise Warren '75

HONOR GIFTS

Gifts were made to Converse College in honor of the following individuals (February 1, 2001 to May 31, 2001):

MR. AND MRS. WILLIAM BARNET III
Mr. and Mrs. William Barnett II

WILLIAM BARNET III
Dr. and Mrs. Edwin J. Delattre
Mr. and Mrs. Frederic M. Poses

CAROLYN BYERS BROCKWELL '56
Mrs. Carolyn Gleaton Cox '57

CLASS OF 1961
Mrs. Nora-Scott Miller Lurding '61

MARY HELEN GARRISON DALTON '46
Mr. Frazer S. M. Pajak, AIA
Mrs. Nancy Dalton Steele '73

JULIA JONES DANIELS '53
Mrs. Jane Winn Pollitzer '53
Ms. Virginia Preston Self '68
Mrs. Marilyn Mateer Sherrill '53

JANIS I. DENGLER
Ms. Christina Dawn Baker '00
Ms. Linda Elizabeth Evans '81
Ms. Sara Everett Herlong '81
Ms. Jane Manning Hyatt '93
Dr. Sharon E. Lambert
Dr. Anne Pleasanton Longley '87
Nathaniel and Gayle Magruder
Mrs. Katharine Clewis Miller '69
Mrs. Millie Gold Moore '66
Mrs. Emmaday Collins Seymour '64
Mrs. Katharine Stephens Slemenda '66
Dr. John M. Theilmann
Ms. Ann Fulton Walker '76

Dr. Melissa A. Walker
Miss Laura L. Zipperer '81

HANNAH EISENGREIN
Ms. Carolyn Rebecca Hill '96

GILLIAN WHITE GOODRICH '68
Mrs. William White, Jr.

NANCY OLIVER GRAY
Presbyterian Women of the First Pres-
byterian Church of Spartanburg, SC
Spartanburg Chapter of the International
Association of Administrative
Professionals

MARY LIB SPILLERS HAMILTON '57
Judie and Myers Hollis

GAYLE G. MAGRUDER
Mrs. Sheryl Starnes Balcerzak '90
Mrs. Nicole Bailey Ferro '92
Dr. Sharon E. Lambert
Dr. Nathaniel F. Magruder
Mrs. Robin Wicks Robinson '82
Mrs. Cheryl Lynn Frees Rogers '94
Mrs. Temple McMillan Starr '92
Dr. John M. Theilmann
Dr. Melissa A. Walker
Ms. Jean Elise Warren '75
Mrs. Karen Richardson Wright '90

MADGE GRAYDON MAJOR '45
The Class of 1945
(For over 50 years of service as Class
Representative)

VELMA HOOD MAYER '24
Mrs. James Edward Hooks
(Rosann Ferguson '59)

MARY FRANCES MORGAN '43
Mr. and Mrs. W. Cornwell Stone, Jr.

REBECCA RAMSAUR PENNELL '53
Mr. and Mrs. William F. Sachs
(Lillian Lindsay '53)

LINDA FRIERSON PERROW '81
Mr. and Mrs. Dwight W. Frierson

ELEANOR THOMSON ROY '36
Mr. and Mrs. William F. Stone, Jr.
(Catherine Roy '66)

ROSA SHAND
Dean Joe Ann Lever
Nathaniel and Gayle Magruder
Dr. Melissa A. Walker

GEORGE M. SPEED
Ms. Joann Gibson '81
Dean Joe Ann Lever

MR. AND MRS. BENJAMIN TAYLOR
(MARIANNA MACINTYRE '81)
Mrs. F. Elizabeth Reaves Burroughs '81

MALINDA MAXFIELD TULLOH
Mrs. Kimberly Waugh Gravlee '81

SUSANNE COLE WEAN '71
Ms. Katherine C. Kelly
Mrs. Nancy L. Rackoff

KATHY S. WORLEY
Ms. Dale M. Frehse

President
Elise Warren '75
Birmingham, AL

Immediate Past President
Vicky Vann Meyer '71
Aiken, SC

**1st Vice-President and Nominating
Committee Chair**
Jane Manning Hyatt '93
Spartanburg, SC

**2nd Vice-President and National
Club Chair**
Mary Helen Richbourg Earle '85
Greenville, SC

Secretary and R&R Committee Chair
Nancy Bain Cote '79
Spartanburg, SC

**Alumnae Development Committee
Chair**
Wallace Davison '89
Austin, TX

CARE Chair
Bet Kenan Hamilton '83
Spartanburg, SC

Music School Representative
Berry Bate '75
Asheville, NC

1940's Decade Representatives
Dicksie Brown Cribb '46
Spartanburg, SC

Mary Frances Morgan '43
Greenville, SC

Golden Club Representative
Elizabeth Harper Hopkins '49
Tampa, FL

1950's Decade Representatives
Mary Alice Ingram Busch '50
Florence, SC

Jane Beasley Moore '54
Rock Hill, SC

1960's Decade Representatives
Sandra Sherard Bethea '67
Columbia, SC

Linda Whitnel Crimm '66
Jacksonville, FL

Gelene Duncan Ellsworth '63
Columbia, SC

Robin Langston Gorman '66
Columbia, SC

1970's Decade Representatives
Carroll Sibley Clancy '71
Raleigh, NC

Karen Clarke '70
Brevard, NC

Betty Arthur Hardaway '71
Florence, SC

Elizabeth Laney Peebles '78
Columbia, SC

1980's Decade Representatives
Palmer Davison Ball '84
Spartanburg, SC

Miriam Creech Brice '86
Greenville, SC

Libby Anne Kepley Inabinet '86
Columbia, SC

Elisabeth Kinney McNiel '89
Bennettsville, SC

Marianna MacIntyre Taylor '81
Spartanburg, SC

**1990's Young Alumnae
Representative**
Catherine Cranford '96
Charleston, SC

1990's Decade Representatives
Chesnut Clarke Allen '94
Spartanburg, SC

Shannon Givens Jaynes '93
Chamblee, GA

Candy Moore '93
Tega Cay, SC

Erin Rich '98
Spartanburg, SC

Lydia Wood '92
Atlanta, GA

Converse II Representative
Karin Bagdanovich DiFranza '97
Spartanburg, SC

**Graduate Degree
Representative**
Kelli Gosnell Hardigree '92
Spartanburg, SC

**Development Committee
Representative**
Linda Russell Cranford '69
Asheboro, NC

**Senior Class President
(Ex-Officio)**
Leigh Anne Mitchell '02
Fair Play, SC

Director of Alumnae
Melissa Daves Jolly '69
Spartanburg, SC



ROCK HILL, SC

Seventeen alumnae and one parent met with President Gray at the City Club of Rock Hill for lunch on Tuesday, February 27.

Photo #1: Converse alumnae, parents and staff at the City Club of Rock Hill.

GREENVILLE, SC

Amanda Pyles Denney '95, club chair in Greenville, planned a luncheon for Converse alumnae at the Poinsett Club on Wednesday, March 7.

Photo #2: Greenville alumnae at the Poinsett Club.

RALEIGH, NC

Tim and Carroll Sibley Clancy '71 hosted a cocktail party for alumnae in Raleigh on Thursday, March 8.

NORFOLK, VA

Converse alumnae in Norfolk met for lunch on Wednesday, March 14 at the Norfolk Yacht and Country Club. Debra Griggs '75, club chair in Norfolk, planned the event.

Photo #3: Converse alumnae, parents and staff at the Norfolk Yacht and Country Club.

RICHMOND, VA

Photo #4: Josh Newton, Executive Director of Development, Betty Rose Townsend Sexton '65, Dottie Crenshaw Cronk '64, President Gray, Brenda Burke McGehee '64, Melissa Daves Jolly '69, Director of Alumnae and Sally Mason Maynard '59 at the Country Club of Virginia on March 14.

Dr. Gayle Schrier Smith '84, club chair in Richmond, hosted a cocktail party in her home on Thursday, March 15.

Photo #5: Mary Poulnot Neff '46, Elizabeth Boinest Conner '45, Gayle Schrier Smith '84 and Elizabeth Lee Wright at Gayle's home.

PEE DEE AREA

Betty Arthur Hardaway '71, club chair in the Pee Dee area, planned a luncheon at the Florence Country Club on Tuesday, March 20.

Photo #6: Alumnae at the Florence Country Club (L to R) Josh Newton, Executive Director of Development, Betty Arthur Hardaway '71, Susan Ikerd, Vice-President of Enrollment Management, Mary Alice Ingram Busch '50, Adelaide Capers Johnson '69, Coordinator of Recruitment Volunteers, Melissa Daves Jolly '69, Director of Alumnae, Frances Green Swink '75, Gray Tatum Covington '94, Dr. Myles Hicks, Jo Capers, parent, Edith McEachern Hicks '44, Elisabeth Kinney McNiel '89, Kathryn Finch Godbold '72, J. Givens Young, father of three Converse alumnae, Jane Marie Pearce Holland '59, Scott Rawles, Vice-President of Institutional Advancement and Sissie Snow McAlister '51.

SUMTER, SC

Alumnae in Sumter met for lunch at the Sunset Country Club on Wednesday, March 21.

Photo #7: (L to R) Alice Mobley Lipscombe '48, Autumn Gorsuch Cervantez '98, Melissa Jolly '69, Director of Alumnae, Harriet Lowder, mother of Allyson Lowder '00, Cecile Rosenberg Moise '40 and Elizabeth "Lib" Murrell Smith '38.

BEAUFORT, SC

Frances Jeter Stowe '92 and Anne Jeter Lindsay '93 hosted a cocktail party for alumnae in the Beaufort/Hilton Head area on Wednesday, March 21.



Photo #8: Scott Stowe, Frances Jeter Stowe '91, Shannon Lindsay, Anne Jeter Lindsay '93, President Gray, Jessica Eggimann '00, Admissions Counselor and Josh Newton, Executive Director of Development at the home of Scott and Frances Stowe on Cat Island.

NASHVILLE, TN

Mindy Thompson Orman '71 planned a tea at the Belle Meade Country Club to introduce Nashville alumnae to President Gray on Tuesday, March 27.

Photo #9: Nashville alumnae at the Belle Meade Country Club.

CHATTANOOGA, TN

Vicki Harman Armor '80 hosted a dinner in her home to introduce President Gray to alumnae in Chattanooga on Wednesday, March 28. Ashley Dover '94 is the club chair in Chattanooga.

Photo #10: Converse alumnae and staff at the home of Vicki and Hicks Armor in Chattanooga.

KNOXVILLE, TN

Tim Duby, manager of the Cherokee Country Club and father of Rachel Duby '04, planned a dinner at the club to introduce President Gray to alumnae in Knoxville on Thursday, March 29.

GREENSBORO, NC

Jackie Mapp Farlow '58 planned a dinner at the Greensboro Country Club to introduce President Gray to the alumnae in Greensboro on Tuesday, April 10. Twenty-seven alumnae and spouses joined President Gray, Josh Newton, Executive Director of Development and Melissa Jolly, Director of Alumnae for the event.

Photo #11: Greensboro alumnae, spouses and Converse staff at the Greensboro Country Club.

WINSTON-SALEM, NC

Ashley Kilgore Wimmer '87, club chair in Winston-Salem, planned a luncheon for Converse alumnae and parents on Tuesday, April 10 at the Forsyth Country Club.

Photo #12: Winston-Salem alumnae and parents with President Gray and Converse staff at the Forsyth Country Club.

ATLANTA, GA

Gay Simmons Colyer '73 and Mary Gossett Dalton King '75 planned a reception and Converse faculty book signing for alumnae in Atlanta on Thursday, May 3. Mary Gossett King hosted the event in her home.

Photo #13: Converse faculty authors and Atlanta hostesses (L to R) Dr. Tom McDaniel, Dr. Jeff Willis, Gay Simmons Colyer, Mary Gossett Dalton King, Dr. Rosa Shand and Dr. Melissa Walker.

GASTONIA, NC

Lyn Farmer Smeak '78, club chair in Gastonia, planned a luncheon and faculty book signing with Converse author, Dr. Rosa Shand, at the Gaston Country Club on May 18.

Photo #14: Gastonia alumnae with Dr. Rosa Shand (L to R) Beth Wilkerson Sytz '82, Kevin Jenkins Plonk '84, Dr. Rosa Shand, Alison Culp Cookson '80, Lou Warren Fuller '52, Anne Wrightson Efid '62, Lyn Farmer Smeak '78, Dede Smith Gunter '48 and Susan Doty Allen '67.

2001 ALUMNAE EVENTS

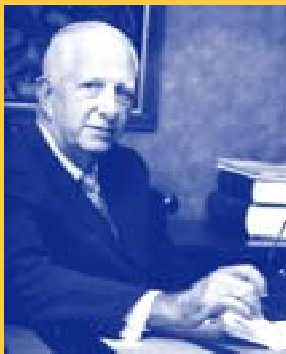
August 14	Wilmington, NC	Evening Reception
September 6	Spartanburg, SC	Evening Reception
September 11	Columbia, SC	Evening Reception
September 14	Spartanburg, SC	Leadership Conference
September 14-16	Lake Summit, NC	Alumnae Association Board Retreat
September 27	Greenville, SC	Evening Reception
October 2	Florence, SC	Evening Reception
October 3	Myrtle Beach, SC	Luncheon
October 4	Atlanta, GA	Evening Reception
October 5	Columbus, GA	Luncheon
October 6	Spartanburg, SC	Hospitality Tent at Wofford Homecoming
October 16	Roanoke, VA	Luncheon
October 16	Winston-Salem, NC	Evening Reception
October 18	Richmond, VA	Evening Reception
October 23	Charleston, SC	Evening Reception
October 29	Birmingham, AL	Evening Reception
October 30	Montgomery, AL	Luncheon
October 30	Mobile, AL	Evening Reception
November 9-11	Spartanburg, SC	ADAPT Conference (Alumnae Directors & Assoc. Presidents Together)
November 15	Charlotte, NC	Evening Reception
November 18	Spartanburg, SC	Golden Club Luncheon
November 18	Chicago, IL	Evening Reception
December 3	Spartanburg, SC	Evening Drop-In before Lessons & Carols
December 10	New Orleans, LA	Dinner
December 11	Houston, TX	Dinner
December 11	Jackson, MS	Dinner

Senior Candlelight Dinner

The Class of 2001 had a special treat this year for their candlelight dinner. Thanks to Nancy Bain Coté '79, the seniors were able to enjoy their dinner at the Piedmont Club.

(L to R) Nancy Bain Coté '79, hostess, Melissa Daves Jolly '69, Director of Alumnae, President Nancy Gray, and Bobbie Daniel '71, Alumnae Information Director.





Malcolm P. McLean

Malcolm Purcell McLean, former Converse trustee and father of Patricia "Tricia" McLean Mendenhall '70, died on May 25, 2001 at age 87.

Mr. McLean spent his life building the nation's container shipping industry, and charted the world's first international shipping routes. In addition to his many honors and distinctions, he was named "Man of the Year" in 1970 by the World Trade Club in New York City.

IN MEMORIAM

- Traynham WYCHE Clark '24, January 20, 2001.
- Grace ARNOLD Cox '25, March 1, 2001.
- Lillian Foushee CUNNINGHAM '25, February 23, 2001.
- Margaret MILLS Seaborn '27, April 16, 2001.
- Irene "Pokie" STEVENS Barnes Doak '29, March 11, 2001.
- Henrietta THOMAS Sanders '30, April 11, 2001.
- Irene BURNS Harbison '33, April 30, 2001.
- Betty LIPSCOMB Camp '33, May 16, 2001.
- Betsy SIKES McCallie '34, April 6, 2001.
- Caroline CANNON Holt '37, April 27, 2001.
- Mary DESHA Didier '41, May 5, 2001.
- Geraldine ROWELL Fraser '42, February 10, 2001.
- Kathryn SOUTHERS Barnett '42, March 2, 2001.
- Cornelia WALKER Albergotti '42, February 9, 2001.
- Polly BREEDEN Rogers '43, March 21, 2001.
- Mary Elizabeth CANNON Mays '44, February 16, 2001.
- Rosalind SPONG Payson Sanford '46, February 21, 2001.
- Valda STONE Page '46, April 1, 2001.
- Jean CARRINGTON Cook '47, March 29, 2001.
- Libby BECKWITH Gregory '48, April 19, 2001.
- Charlotte CAUSEY Frierson '51, March 15, 2001.
- Mary CUTLIFF Gore '51, April 11, 2001.
- Martha CHAKALES Saras '52, April 19, 2001.
- Isabella Middleton BARNWELL '54, July 7, 2000.
- Betty Lou TOOLE Symonds '55, December 30, 2000.
- Betty BURGDORF Cureton '58, March 20, 2001.
- Anne CRYMES Zemba '62, March 2001.
- Jane HARBIN Merchant '69, August 4, 2000.
- Lavinia "Vinnie" BARRON Rosenzweig '70, March 21, 2001.
- Leslie Ann MUZZY '90, February 20, 2001.

SYMPATHY

- To Fay BAGWELL Chapman '39 on the death of her brother, Rev. Billy Bagwell, March 1, 2001.
- To Cecile ROSENBERG Moise '40 on the death of her husband, Francis "Nick" Moise, Jr., April 26, 2001.
- To Margery TOOLE Smoak '40 on the death of her sister, Betty Lou TOOLE Symonds '55, December 30, 2000.
- To Lucy TISON MacIntyre '42 on the death of her husband, Wade Hampton MacIntyre, Jr., April 17, 2001.

- To Eleanor TOOLE Going '43 on the death of her sister, Betty Lou TOOLE Symonds '55, December 30, 2000.
- To Bess Owen ALEXANDER Yeilding '44 on the death of her husband, Henry Boone Yeilding, May 10, 2001.
- To Virginia MANNING Moses '44 on the death of her brother, Will Manning, February 5, 2001.
- To Betty MCCARTY Edwards '45 on the death of her brother, William B. McCarty, Jr., April 27, 2001.
- To Isabel RUSSELL McCarty '45 on the death of her husband, William B. McCarty, Jr., April 27, 2001.
- To Sara SANDERS Lawton '45 on the death of her husband, Crawford Bryan Lawton, March 11, 2001.
- To Grace WILLIAMS Gaither '45 on the death of her sister, Jean Williams Weida, March 12, 2001.
- To Elizabeth MCGEORGE Spencer '49 on the death of her mother, Elizabeth O. McGeorge, March 25, 2001.
- To Barbara BROWN Smith '50 on the death of her sister, Stephanie Brown, February 8, 2001.
- To Sara TOOLE Beeland '55 on the death of her twin sister, Betty Lou TOOLE Symonds '55, December 30, 2000.
- To Anne MAYO Elliott '64 on the death of her father, Henry H. Mayo, May 6, 2001.
- To Cathy INABNIT '68 on the death of her mother, Mary Stewart Inabnit, April 6, 2001.
- To Janice MAYO Spessard '69 on the death of her father, Henry H. Mayo, May 6, 2001.
- To Patricia "Tricia" MCLEAN Mendenhall '70 on the death of her father, Malcolm P. McLean, May 25, 2001.
- To Sally Telfair SHEFTALL '75 on the death of her mother, Mrs. LeeRoy Sheftall, February 3, 2001.
- To Margaret HORNE Darr '79 on the death of her mother, Marion Lee Williams Horne, April 30, 2001.
- To Suzanne SMITH Williams '79 on the death of her mother, Mary Hollis Smith, November 25, 2000.
- To Elizabeth YEILDING Ezell '79 on the death of her father, Henry Boone Yeilding, May 10, 2001.
- To Linda FRIERSON Perrow '81 on the death of her mother, Charlotte CAUSEY Frierson '51, March 15, 2001.
- To Marianna MACINTYRE Taylor '81 on the death of her father, Wade Hampton MacIntyre, Jr., April 17, 2001.

- To Pauline ROGERS Scott '81 on the death of her mother, Polly BREEDEN Rogers '43, March 21, 2001.
- To Claudia SIMPSON Hapak '81 on the death of her father, Col. Bill Simpson, January 2001.
- To Amy ELWELL Harris '82 on the death of her mother, Mary Irwin Elwell, March 31, 2001.
- To Jane ROGERS '82 on the death of her mother, Polly BREEDEN Rogers '43, March 21, 2001.
- To Frances ROGERS '84 on the death of her mother, Polly BREEDEN Rogers '43, March 21, 2001.
- To Melissa CURETON Prickett '85 on the death of her mother, Betty BURGDORF Cureton '58, March 20, 2001.
- To Elaine ANDERSON McDowall '92 on the death of her grandmother, Vangie B. Sauls, March 17, 2001.
- To Claire SCOTT Falcone '94 on the death of her grandmother, Margaret Reeves Barron, May 3, 2001.
- To Amy QUINN Amey '96 on the death of her grandmother, Helen Gossett West, February 17, 2001.
- To Heather Lynne STEAD '96 on the death of her father, David William Stead, January 20, 2001.
- To Kimberly FINNEY Carmelich '97 on the death of her grandfather, Benjamin T. Finney, Sr., October 2000 and her grandmother, Faye Finney, April 6, 2001.
- To Amanda CRANE '00 on the death of her grandmother, Lydia Duke Blue Crane, March 25, 2001.
- To Jessica EGGIMANN '00 on the death of her father, William Eggmann, April 27, 2001.

MARRIAGES

- Nancy BEERS '71 to John Parsons, April 28, 2001.
- Mary Walker NORFLEET '83 to Kirk Fry, April 21, 2001.
- Dawn HAMMER '90 to Mark Davis, September 25, 2000.
- Stephanie Denise KEE '90 to Matthew Joseph Beauvais, March 17, 2001.
- Elise NEIL '90 to Jeffrey Clark Bengston, May 5, 2001.
- Claudia DAVIS '91 to Ben Donovan, May 19, 2001.
- Patricia Anne REITMEIR '91 to Mark Lenwood Droze, December 31, 2000.
- Marie Gosnell SMITH '91 MED to Timothy D. Patrick, March 3, 2001.
- Katherine VAN HORNE '91 to Jonathan Trexler, May 5, 2001.
- Akiko KIYOSAWA '92 to Megumi Nakamura, April 22, 2001.
- Shannon Marie STEWART '92 to Robert N. Hill, Jr., December 2, 2000.
- Ruth Ann BISHOP '94 MED to Gerald James McCabe, February 10, 2001.
- Casey Lynn ADAMS '96 to John Robert Dombroski, March 11, 2001.
- Debbie GARDNER '96 to John Guilfoyle, May 5, 2001.
- Bronwyn Elizabeth KEMPER '96 to Frank E. Thomas, Jr., June 17, 2000.
- Kimberly Catherine VARNADOE '97 to John Scott Bearden, November 11, 2000.
- Kristi Machel HINES '98 to James Allen Hagood, March 24, 2001.
- Clayton Smoak KEARSE '98 to Brandon Matthew Walton, March 3, 2001.

Margaret Ervin MCCLARY '98 to James Edward Moss, March 10, 2001.
 Ashley Elizabeth GRIMSLEY '99 to Ryan Alan Reynolds, April 21, 2001.
 Sarah Brooks LUMPKIN '00 to Brian Christopher Wyatt, July 1, 2000.
 Heather Anne VAUGHAN '00 to Daniel Creel Foley, February 10, 2001.

BIRTHS

Mavis Eaddy Cagle, born May 2, 2001, son of Martin and Julia IVEY Cagle '85.
 Kathryn Ann Liggitt, born March 6, 2001, daughter of Randy and Kelly MALONEY Liggitt '85.
 Thomas Barker Hollingsworth III, born November 27, 2000, son of Barker and Susan PEEL Hollingsworth '85.
 Ian Henry Wong, born March 2, 2001, son of Tony and Elizabeth TRONNES Wong '85.
 Mary Saille Scott Sevier, born January 18, 2001, daughter of David and Mary Catherine CORLEW Sevier '86.
 Jessi Minton Lessenberry, born February 17, 2001, daughter of Jeff and Terri MINTON Lessenberry '87.
 Baxter Isaiah Stein, born February 10, 2001, son of Jon Loshbaugh and Mary Kay SECKINGER '87.
 William Ralph Cook III, born September 7, 2000, son of Ralph and Suzanne WELLMAN Cook '88.
 Benjamin Pressley Miller, born January 30, 2001, son of Jay and Wendy WOLFENDEN Miller '89.
 William Davis Henry, Jr., born March 9, 2001, son of Davis and Cathy ANDERSON Henry '90.
 Madeline Lyal Goodlett and Thayne Spears Goodlett, born February 24, 2001, twin daughter and son of Toby and Gwynne BROWN Goodlett '90.
 Julia Catherine Billings, born April 25, 2001, daughter of Richard and Susan KNIGHT Billings '90.
 Mary Appleton Weston, born January 26, 2001, daughter of John and Appleton O'MELIA Weston '90.
 David Ernest Thomas, born April 16, 2001, son of David and Dalinda PEEK Thomas '90.
 Sarah Margaret Reid, born January 12, 2001, daughter of Stuart and Missy SMITH Reid '90.
 Caleb McIntyre Crumly, born February 23, 2001, son of Jonathan and Kim UNDERWOOD Crumly '90.
 Catherine Grayson Fallon, born March 5, 2001, daughter of Steve and Nancy WRAY Fallon '90.
 Sydney Stratton Vermillion, born January 22, 2001, daughter of Drew and Margaret BORDEN Vermillion '91.
 Garren Lurier Pinion, born November 16, 2000, daughter of Fred and Jennifer GARREN Pinion '91.
 Hannah Elisabeth Straughn, born March 29, 2001, daughter of John Michael and Heidi KNEDLIK Straughn '91.
 Henry Scott Gregory, born February 14, 2001, son of Scott and Catherine WARD Gregory '91.
 Emma Catherine Charles, born February 23, 2001, daughter of Steve and Catherine WARLICK Charles '91.
 Cooper McKenzie James, born August 29, 2000, son of Hugh and Caroline RIEGER James '92.
 Wilds Lovick Pierce, born December 18, 2000, son of Michael and Anna WIMBERLY Pierce '92.
 Brooks Lee Brown, born January 20, 2001, son of Jim and Shannon BRADLEY Brown '93.



**Betty Burgdorf
Cureton '58**

Betty Burgdorf Cureton, past president of the Converse Alumnae Association, died on March 20, 2001 at age 64.

Betty was one of the original Converse 100 award recipients during the College's Centennial in 1989, and also received the Distinguished Alumna Award in 1998. She was an active member of the Columbia Converse Club and the mother of Melissa Cureton Prickett '85. She made her home in Columbia, SC, where she was an active community volunteer.

Caroline Ramseur Earle, born August 19, 2000, daughter of Perry and Katie BYRD Earle '93.
 Mae Edwards Webster, born March 27, 2001, daughter of Thomas and Bonnie BAILEY Webster '94.
 Hunter Knight Thompson, born April 10, 2001, son of Tee and Elizabeth BANNISTER Thompson '94.
 Patrick Ryan Welmaker, born January 10, 2001, son of Jed Patrick and Bree BAZEMORE Welmaker '94, '95 MED.
 Madeline Griffith Richmond, born March 17, 2000, daughter of Edmund and Grif BLACKWELL Richmond '94.
 Caroline Cantrell Emerson, born May 15, 2001, daughter of Kingsley and Christy CANTRELL Emerson '94.
 Anna Katherine Harris, born March 3, 2000, daughter of Trey and Jill DAVIS Harris '94.
 Katherine Reeves Falcone, born November 12, 2000, daughter of Jake and Claire SCOTT Falcone '94.
 William Brice Waters, born March 27, 2001, son of Frank and Martha WHITE Waters '94.
 Miles Cleckley Stoner, born July 11, 2000, son of Mary Cameron CLECKLEY Stoner '95, '97 MED.
 Anna Elizabeth Goransson, born March 24, 2001, daughter of Erik and Nan REPASS Goransson '95.
 Alison Shelton Welborne, born December 21, 2000, daughter of James and Stephanie SHELTON Welborne '95.
 Amelia Margaret Gavin, born November 20, 2000, daughter of David and Anne Harvin SMOAK Gavin '95.
 Lake Hawthorne Barrett, born March 22, 2001, son of Thorne and Jenna ALDRIDGE Barrett '96.
 Anne Watts Tuckwiller, born January 17, 2001, daughter of John and Jennifer MINOR Tuckwiller '96.
 Holland Elizabeth Keller, born March 31, 2001, daughter of Bo and Page VAUGHAN Keller '96.
 Richard Ellis Carmelich IV, born February 9, 2001, son of Richard and Kimberly FINNEY Carmelich '97.
 Andrew Michael Cervantez, born March 27, 2001, son of Mike and Autumn GORSUCH Cervantez '98.
 Nathaniel Storm Lockamy, born February 22, 2001, son of Charles Dean and Kathryn HENDRIX Lockamy '00.

ADVANCED DEGREES

Debbie GARDNER Guilfoyle '96, Master of Social Work, University of South Carolina, May 11, 2001.
 Heather Lynne STEAD '96, Master of Social Work, University of Georgia, May 12, 2001.
 Merri Christy HARMON '97, Master of Arts in Christian Education, Southwestern Baptist Theological Seminary, May 2000.
 Virginia "Jenny" D. ORR '98, Master of Arts in Youth and Family Ministries, Denver Seminary, May 18, 2001.
 Holly SMITH Egan '98, Master of Science and Communication with emphasis in Public Relations, University of Tennessee, May 2001.
 Helen WALKER '98, Juris Doctorate, University of South Carolina School of Law, May 2001.

CAREER CHANGES

Mona BURRIS Dukes '80, Director of Development Communications, Williamsburg Technical College, Kingstree, SC.
 Elise NEIL Bangston '83, Choral Arts Manager, Masterworks Chorus and Orchestra, Bethesda, MD.
 Donna MINCEY Swinbank '84, Senior Auditor, South Carolina Department of Mental Health, Columbia, SC.
 Melissa SANDERS Burns '90, Southeastern Regional Sales Manager, Emily Ray, Inc.
 Molly Lynne FORTUNE '93, Restoration Department Director, Fox Theatre, Atlanta, GA.
 Kristina GOODWIN Connell '95, Assistant District Attorney, Augusta, GA.
 Kerry ASHLEY '96, Business Manager, Katherine M. Nicholson, DMD, Spartanburg, SC.
 Heather Lynne STEAD '96, Early Intervention Program Teacher, Social Circle Elementary School, Social Circle, GA.
 Kimberly FINNEY Carmelich '97, Coordinator, The Exchange Club Parent and Child Center, Bristol, CT.
 Merri Christy HARMON '97, Minister of Children/Preschool, Summerville Baptist Church, Summerville, SC.
 Angela MILLS '98, Account Representative for Membership Sales and Service, Denver Chamber of Commerce, Denver, CO.
 Jennifer REESE Boyd '98, Design Engineer II, Schlumberger, Atlanta, GA.
 Millie POWELL '00, Designer, J. Banks Design Group, Inc., Hilton Head, SC.