

CONVERSE



About the Cover:

Erica Lane (foreground), Student Government Association President, wears the 2012-2013 orientation t-shirt bearing the SGA theme, *Embrace the Revolution: It Starts With You*. Lane led the primary goal of the SGA this year—to continually strive to stimulate involvement and personal growth on campus. Encouraging a path of can-do spirit and mindset, the theme focused on positive action in answer to the Founder's Ideal to develop engaged leaders who think critically and creatively and affect positive change in the world. "I believe that if positivity is embraced, its impact will be revolutionary," said Lane.

Director of Publications
Cynthia Faber Smith

Production Assistant
Donna Phillips Gardner

Alumnae News
Nancy Smith Gage '82

Thank you to these contributors:

Academy of Vocal Arts in Philadelphia, TJ Baker, Briana Bateman '14, Ron Bailey Photography, Carrie Hill Coleman '96, Tom Curcio, Dr. Joe P. Dunn, Sally Jeter Hammond '81, Hot Eye Photography, Beth Farmer Lancaster '96, Erica Lane '13, John Pryor, Bobby Stewart, Hanna Kate Warrington '14

The *Converse Magazine* is published annually by the Office of Communications, Converse College, 580 East Main Street, Spartanburg, SC 29302, 864.596.9704. Converse College does not discriminate in admissions or employment on the basis of race, color, sex, national or ethnic origin, age, sexual orientation, religion or disability. Converse admits only women to undergraduate programs and services in accordance with its historical mission.

2013, Volume 125, No. 1
Copyright© 2013 by Converse College

Converse 2012: Year in Review 4

Converse Briefings 6

FEATURES

Good Sports 10

The growth of athletics at Converse
by Joy Couch

Sharing a Passion for Music 14

Students and faculty travel to Germany
by Susan Lyle

Well, Butter My Biscuit! 16

Southern culture conference success
by Cynthia Faber Smith

"WOW" 18

Interior design program accreditation
by Ruth Beals

Student Center 20

Books 22

Reunion 2012 Photo Review 24

Honor and Memorial Gifts 26

Carlos DuPré Moseley Tribute 26

Phyllis Horne Crane '80 MEd Tribute 30

Campus Wide Lens 32

AROUND THE TOWER

Prez to Prez Q & A 34

Going the Distance 37

by Sally Jeter Hammond '81

2013 Alumnae Award Recipients 38

2013-2014 Alumnae Association Board Slate 39

Planning a Gift to Converse 40

by Dianne Ansley

CLASS NOTES 41

First Annual TAPP Report 45

by Carrie Hill Coleman '96

Converse Family Album 52

Big Sis Li'l Sis Heros 59

WANTED: Modine! 64



Connect to CONVERSE

WEBSITE

Our website is continually updating news stories about the Converse Community.

converse.edu



TWITTER

Alumnae: @connie1889

Converse:

@conversecollege

FACEBOOK

Be a part of our alumnae Facebook page:



Converse College Alumnae Association

See class notes beginning on page 41 for details on class year Facebook pages.

LINKED IN

Make connections for your business and personal advancement through the career network, **Linked In**:

Converse College Alumnae and Alumni Network

EMAIL

Receive email updates from the College about news and events.

Update your alumnae contact information and be entered to win

a mini iPad!

(see page 3 for details)

Register for Alumnae Events

Office of Alumnae and Donor Relations 864.596.9011
alumnae@converse.edu



Converse College Alumnae Association

Give to the Converse Annual Fund

Development Office 864.596.9053
converse.edu/give

Refer a Student

Admission Office 864.596.9040
admission@converse.edu



Converse Admission

Update Your Contact Information

Office of Alumnae and Donor Relations 864.596.9011
alumnae@converse.edu



Converse College Alumnae Association

Request a Transcript

Registrar's Office..... 864.596.9095
registrar@converse.edu

Attend an Athletic Event

Athletic Department 864.577.2050
athletics@converse.edu

Attend a Gallery Opening

Milliken Art Gallery 864.596.9177 or 864.596.9214



Milliken Art Gallery, Converse College

Attend a Concert or Play

Petrie School of Music 864.596.9021
music@converse.edu

Lawson Academy of the Arts 864.596.9607



Lawson Academy of the Arts

Theatre Ticket Office 864.596.9068

Theatre and Dance Office 864.596.9067

theatre@converse.edu

Twichell Auditorium 864.596.9069

Twichell Box Office 864.596.9725

Complete Your Degree

Admission Office 864.596.9040
admission@converse.edu



Converse Admission

Converse II 864.596.9014

converse2@converse.edu

Graduate Studies..... 864.596.9220

graduate@converse.edu

Quick Reference

Converse Switchboard 864.596.9000

Communications Office..... 864.596.9706

communications@converse.edu

Center for Student Development and Success... 864.596.9027



Center for Student Development and Success at Converse College

Finance & Registration Center 864.596.9019

studentbilling@converse.edu

Want it?



CONVERSE

Want it!

Update your contact information for our database
—**including your current email address**—
and you will be entered into a drawing for a Mini iPad!

Have you opted out of Converse emails in the past?
Opt back in for a chance to win!

Send your information to:
Office of Alumnae and Donor Relations
alumnae@converse.edu
800.584.9098 or 864.596.9011

All submissions must be received by **May 1, 2013** to be eligible for the drawing.

Converse 2012 Year in Review

JANUARY



New Valkyries Buses



Meagan Kusek '12 (right) awarded Fulbright scholarship, Lindsay Eller '13 receives Goldwater honorable mention



Baccalaureate and Hats Off

MAY

SEE PAGE 24



Reunion Week 2012



"Girls on the Run" founder receives honorary degree at Commencement

JUNE

Summer Orientation and Advising Program for incoming Freshmen



First annual TAPP encourages 20% more participation in ONE Campaign when fiscal year ends June 30, 2012

SEE PAGE 45



SEE PAGE 10

\$2.5 million given to construct Marsha H. Gibbs Field House

Golf Team opens inaugural season with home invitational



SEE PAGE 59



Big Sis/Li'l Sis Week



U.S. News & World Report ranks Converse as top university



Thousand Thanks Gala honors Marian McGowan Nisbet '62 with the Dexter Edgar Converse Award

OCTOBER



1889 Week



Trustees of Converse and Wofford College announce study to maximize collaborations



Student Mascot Roxie Reveal

ONE

Converse Annual Fund ONE Campaign Challenge from the Board of Trustees

FEBRUARY

Converse launches online graduate education programs



SEE PAGE 34



2nd Annual Love-In focuses on campus diversity

MARCH



Girls' Day brings 400+ girls to campus for a day of fun activities



Founder's Day

Sophomore Ring Ceremony



SEE PAGE 16

SEE PAGE 32



B.o.B. headlines Spring Concert

APRIL

JULY



Converse welcomes 3,000 NSA World Series competitors to Spartanburg

AUGUST



Converse announces policy for Tobacco-Free Campus



SEE PAGE 18

Interior Design Program garners CIDA Accreditation



New Student Move-In Day



SGA "High Heel Hundred" race raises awareness of Gender Pay Gap



SEE PAGE 26

30th Anniversary Season Carlos Moseley Chamber Music Series

Michel Stone's debut novel, *The Iguana Tree* is the freshman read and the first "Cover to Cover with Converse" book club selection



SEPTEMBER

Converse ranks 3rd in nation for research, service and social mobility



NOVEMBER

Converse Opera Theatre's *Hansel and Gretel*



Watch it online at converse.edu/lessonsandcarols2012



Festival of Lessons and Carols



Peppermint Ball

DECEMBER

As you can imagine, students were busy during December studying for exams before break!

Alumnae: Do you have a photo of exam week you'd like to share in the next issue? Send photos to cindy.smith@converse.edu.

Converse Briefings



DR. DEE DEE WASHINGTON '03

MEd, a 20-year veteran educator, was appointed Associate Superintendent for Academics for Greenville, SC County Schools, July, 2012. Dr. Washington most recently served as principal of Brushy Creek Elementary School, which was named a Red Carpet School and a Palmetto's Finest Finalist School under her leadership. In May 2012, she was named GCS Administrator of the Year.

"The Converse experience was central to helping me to know for sure that I was interested in and prepared for a future career in administration," said Dr. Washington. "Many of my teachers were also practitioners, practicing or retired school leaders, who shared their experience with us. I was also blessed with professors who provided such specific and supportive feedback that I was able to grow as a scholar and an aspiring school leader.

Converse Art Education program coordinator, **DIANNE BAGNAL**, has been named 2012 South Carolina Art Educator of the Year. Bagnal has been a member of the faculty at Converse for the past 11 years. She developed both the Master of Education and the Master in the Art of Teaching degrees in art education at Converse. Prior to coming to Converse, she taught art for nearly 30 years in K-12 schools. Bagnal was nominated by longtime

colleague and friend, Susanne Floyd Gunter, who directs the graduate art education program at Converse. "Dianne revolutionized the art education coursework at Converse College, developing two masters programs to meet the needs of the flourishing art community in the Upstate. Under her leadership, the number of art education majors has grown significantly. She is preparing teachers to face the real world."

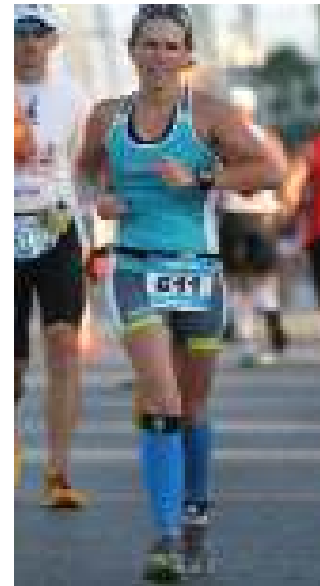
Looking to the future for the art education field, Bagnal notes, "A large number of art teachers nationwide are approaching retirement age. Those jobs will need to be filled with highly skilled art teachers new to the work force." Converse's art education program is critical for South Carolina. "My goal at Converse has been to make the undergraduate program competitive with art education programs throughout the nation." Bagnal was thrilled to receive accolades for doing a job she has always loved. "Receiving the Art Educator of the Year award is definitely one of the highlights of my career," she said.



Read more about Dianne Bagnal's award at converse.edu/diannebagnal.

KRISTEN WOODWARD SCHLORHOLTZ

'01 completed her first Ironman competition on November 3, 2012, at Panama City Beach, FL. She wears her Valkyries' swim cap in all competitions underneath whatever cap is required. Swimming is her first love—she swims on a Master Team in Panama City Beach, FL, and when competing in triathlons, the swim is always her best event.



ROBIN WICKS ROBINSON has been elected a District Court Judge of North Carolina, which is the trial court handling approximately 95% of all cases, including criminal (misdemeanors and lower level felonies), civil, family and juvenile courts.

Robinson also serves on the North Carolina Council for Women, appointed by the governor to oversee and administer agencies who address women's issues and needs and, in particular, to administer displaced homemaker grants from the State. She is also a judge for the Teen Court program, in which teens charged with crimes have an opportunity to divert prosecution through a procedure in which a jury of their peers (teens who volunteer for the program to serve as



constantly taught students to “submit, submit, submit.” She also credits the presentation skills she acquired at Converse as invaluable during the panel judge interviews. “Most importantly, Converse drilled into me that great art should be based on a well considered concept,” says Abe- Miller. “I believe that developing my sculpture’s concept from my research of the School’s mission and goals played a large part in my ultimate success.

lawyers and jurors in the teen court trials) hears the case and determines their punishment. Robinson was recently awarded the Junior League of Wilmington’s community service award.

AYAKO ABE-MILLER '12 was selected in a national competition to create her steel sculpture, Balance and Harmony, for the campus of the new USC School of Medicine in Greenville, SC. The sculpture is the focal point of the first floor of the school. It weighs 1,700-pounds, took seven months to produce and was unveiled November 3, 2012.

The only guideline for the competition was to reflect the school’s mission and vision: Healthcare, Research, and Education. Abe-Miller chose to represent these three aspects with large overlapping rings. She describes the sculpture itself as a symbol of the school’s efforts “to unite these three transformative and interconnected elements in a harmonious balance to achieve its goals of continuous improvement and superior healthcare.”

As a new graduate, Abe-Miller felt she would not have even considered submitting for such a professional job but her professors at Converse



SARAH WARRICK '12, AMY GRACE PEELE '12, and MELANIE WADDELL '15 attended the NATO Summit Meeting in Chicago May 19–21, 2012. The three were selected in a competitive application process from among all student participants from the United States and Canada who participate in International Model NATO. They attended panels and lectures by numerous European defense ministers; the foreign ministers of the Croatia,

Slovakia, Lithuania, Estonia, and Sweden; the presidents of Romania and Bulgaria; the president of the European Union; the Supreme Allied NATO Commander and the NATO Commander in Afghanistan; and several international security experts from various think tanks. Highlights included meeting NATO Secretary General Anders Fogh Rasmussen and being the only participants who landed a private talk with former United States Secretary of State Madeline Albright.



Left to right: Amy Grace Peele '12, Sarah Warrick '12, former United States Secretary of State Madeline Albright and Melanie Waddell '15 at the NATO Summit Meeting.

Warrick worked on the campaign staff of Hayden Rogers for US Congress and plans a career in politics in Washington, DC. Peele received the prestigious Seymour David Lipset Fellowship to pursue a Masters in Public Policy with specialization in national security affairs at George Mason University. Waddell is a theatre major. All three are award-winning delegates at both International Model NATO and in Model Arab League.



CHEF DOUG ALLEN from Converse’s dining services had the honor of participating in Sodexo’s “Global Chef” program in November. He is only the sixth US chef to be invited to this innovative program that facilitates the exchange of executive chefs around the world. Each Global Chef shares authentic international cuisine and traditional cooking techniques with clients, customers, staff and an on-site culinary team.

This opportunity allowed Chef Allen to share his talent and passion for southern cuisine, highlighting the flavors of South Carolina in Finland and Sweden. Over 40 original southern recipes were developed, tested and approved for the program. Sourcing had to be arranged for each dish and recipes were converted to Finnish and the metric system. Menus included favorites such as Southern Fried Chicken, Pulled Pork with Overnight Slaw and Mustard BBQ Sauce, Three Cheese Mac and Cheese with Smoked Ham, Butternut Squash Bisque, Bourbon and Cider Marinated Pork Tenderloin with Wild Mushroom Stone Ground Grits (imported from SC) and a Pimento Cheese and Bacon Burger. Deserts included Pecan Fudge Torte, Peach Cobbler, Banana Pudding and Pecan Pie. Serving 900-1400 customers at each meal, Chef Allen garnered praise from Fredrik T. Strand, President and CEO of Sodexo Nordic for the best southern meal he has ever had!

60+ pairs
of Converse
sneakers

1

**Jack Russell
terrier
“Trifle”**

Brant Bynum
Associate Vice President
for Academic Affairs,
Director of Student
Success, and Associate
Professor of Spanish



NORA NASSRI '08 is writing her PhD dissertation in political science at the University of South Carolina on aspects of religion and political violence. Her research has taken her to Rwanda and Bosnia among other places. Although from Orangeburg, SC, she has extensive family in Syria. Nassri returned to campus in October to speak to students about the Syrian Civil War. She has worked in refugee camps and, under a European Union grant, she spent a summer working in a Syrian NGO completing a study on Syrian Economic Development.

Associate Professor of Studio Art, Printmaking and Photography, **ANDREW BLANCHARD** was selected by *Oxford American* magazine as one of the “New Superstars of Southern Art.” Read more about his latest work at converse.edu/southernngood.



PHOTO BY IAN CURCIO



KRISTINA LEWIS '09 completed her master's in vocal performance at Peabody and is now studying opera at the Academy of Vocal Arts in Philadelphia. She appeared as Olga Larina in AVA's production of *Eugene Onegin* and will be performing the role of Ulrica in *Un Ballo in Maschera* in April 2013.



Left to right: Linda Frierson Perrow '81, Lawson Edwards Hough '90, Pamela Plowden Rawson, Carol Cheever Hamilton and Karen Pulliam Menge '73.

The design firm Pulliam Morris Interiors in Columbia, SC celebrates 50 years of professional residential and commercial design. The 14-person company, led by partners Carol Cheever Hamilton, **KAREN PULLIAM MENGE '73**, ASID, and Pam Plowden Rawson, ASID, includes **LINDA FRIERSON PERROW '81**, **LAWSON EDWARDS HOUGH '90** and **ASHLEY JOHNSON THOMAS '02**. The late **SALLY HARMON CAUGHMAN '68** was a partner in the firm and was a former Converse Alumnae Association president. Congratulations to this multi-generational Converse success story!

KAYLEE BOALT '14, a double major in vocal performance and politics, has put her dual studies to the test. In November, she appeared as Hansel in the Converse Opera Theatre's production of *Hansel and Gretel*. A short month later, Kaylee traveled to Riyadh, Jeddah, and the Eastern Province of Saudi Arabia as part of a selective US student cultural study group sponsored by The Saudi government and the National Council on US-Arab Relations. The students were met with gracious and generous hospitality at every stop of the trip. Boalt returned with a personal mission to conquer what she calls *Islamaphobia*. "Cultures different from our own can be viewed by a lens of prejudice, and even fear," says Boalt. "To remain dutiful citizens of the world, we must remain open without resentment, especially while perceiving the cultures of the Middle East."



Read Kaylee's "Top Ten Things I Learned About KSA Culture" on her blog at kayleetosaudi.blogspot.com.



Coach Joy's GOOD



Surrounding benefactor Marsha H. Gibbs (center left) and Coach Joy Couch (center right) are Converse sports representatives:

Equestrian—Sarah Kate Chatel '14

Volleyball—Anna Williams '14

Golf—Alex Bruce '16

Swimming—Jesse Pope '14

Basketball—Samira Gillcrease '14

Soccer—Chandler Morrow '13

Lacrosse—Brianna Hoffman '13

Tennis—Olivia Self '13

Cross Country—Casilda Ruiz '15

SPORTS



by Joy Couch

I am passionate about women's athletics and I am also a competitor. When I came to Converse six years ago, I saw my role as athletic director to be part mission and part challenge—to grow the athletics program at Converse for the maximum benefit of the students and the College and to do that while *winning*.

At Converse, we aren't playing second fiddle to men's sports. Every athlete on campus has an opportunity to set the standards in women's athletics because we are the only women's college in NCAA Division II. The Valkyries compete at a higher level than any other women's college in the nation!

Since 2006, we've grown from five sports to 10 sports and will add Track and Field for fall 2013, with explorations underway to add more sports that are a good fit for the Converse student profile. As we celebrate just our fifth year in the conference, our soccer team participated in the first conference appearance ever for a Converse athletic team, our swim team was ranked in the top 25 for Division II and Converse was ranked 29th in the nation among Division II institutions. We've had individual athletes shine at important events such as equestrian Cate Billings '15 who performed in the prestigious Cacchione Cup. Our coaches continue to be the cream of the crop such as John Constable earning the 2012 Conference

Carolinas Coach of the Year Award. We are proud of all these achievements (and many more). Let's face it, the success of our athletes is the measure of our athletic program's success.

The prize I am most proud of is receiving the Allen Sharp Award for the highest graduation rate in the conference for the third straight year. That's what Division II athletics is all about—the balance of scholarship with athletics, leadership and service—and why Division II fits so well with the Converse mission. We repeatedly have athletes make All-Conference academic honors. Jessica Mason '14 and Rhianna Gluhosky '14 also made All-American honors, the first in Converse history.

The dedication our athletes have to their sports is reflected in their studies. Despite the time commitment required for training, you will find that our athletes maintain excellent grades and manage their time for studies as well as, if not better, than non-athletes. This training serves them well after graduation. They understand time commitments and that other people are counting on them. They can work as a team and understand their piece of the pie. Moreover, they understand how their actions directly effect the



Hillary Parkin receives the Weisiger Cup on Founder's Day 2012. From left to right: Joy Couch, Hilary Parkin '12, Glenn Parkin, Agnes Binder Weisiger '63 and President Betsy Fleming.

success of others. I've seen this in our students over and over again. Not just in their career choices but also in their continued involvement with service after graduation.

Winning in the academic arena while providing the highest quality athletic experience—that's a win-win for the students, for Converse and for the community. Our supporters recognize this key connection. The Weisiger Cup and Weisiger Outstanding Scholar-Athlete Scholarship were established by Agnes Binder Weisiger '63 and her husband Ed Weisiger, Sr. in 2009. The awards are made possible through an endowment to advance Converse's commitment to science and to build an athletic program that prioritizes academic excellence.

This fall, Jimmy Gibbs and his wife, Converse Trustee Marsha Gibbs, made a \$2.5 million gift to help fund construction of the 14,000 square-foot Marsha H. Gibbs Field House and enhancements to the Valkyries playing fields.



Lacrosse is the fastest-growing women's sport. Converse added it to the roster in 2009 and we are ranked this year as #6 in the conference.

This investment from the Gibbs, who are long-time Spartanburg community leaders and Converse supporters, is the lead gift towards the project's total cost of over \$4 million.

"We are excited to be part of this project," said Marsha Gibbs. "A strong athletics program is a great attractor for young women, and a facility of this quality will



Converse established an Intercollegiate Horse Show Association (IHSA) affiliated program in 2011. Cate Billings '15 placed 14th in the 2012 Cacchione Cup. This is the highest level of collegiate riding in which an athlete can compete.



Read more about the Marsha H. Gibbs Field House and see the floor plans at converse.edu/gibbs-field-house.

The Marsha H. Gibbs Field House will include: 5 locker rooms, a weight training facility, indoor/outdoor golf training facilities, indoor golf bays, outdoor chipping/putting green, 8 coaching/administrative offices, an academic support center, a rooftop terrace, a sports information box and a catering facility. Converse anticipates the facility opening in early 2014. Field enhancements, including the installation of a turf field and a new half-size field, are anticipated to occur in the near future.

enable Converse students to enjoy a top-level experience in collegiate athletics.”

“Converse is breaking the mold for women’s athletics,” said Converse President Betsy Fleming. “The recent growth and success of our athletic programs demanded a reassessment of the investment required to support our progress both now and in the future. Marsha and Jimmy’s excitement about the project is tied to their belief in the value of a higher education, their appreciation of the growing interest from girls in playing competitive sports, and their endorsement of the strong leadership of Joy Couch. This tremendous gift also reflects Marsha’s passion for advancing women and families in our community.”

The Gibbs Field House will be second to none in Division II athletics and will expand Converse’s opportunity to recruit high achieving student-athletes. This project will complete the picture in positioning us to build a winning program. As the number of high school

girls who play sports continues to rise, Converse offers them a great education *and* the ability to continue their passion of playing sports. The commitment of the College and the community puts Converse in a place to offer this kind of college experience to students—our athletes can have it all.

Joy Couch is the Valkyries Athletic Director.



The Valkyries soccer team made school history this year by being the first Converse team ever to go to a conference tournament. Coach John Constable (top) also earned the 2012 Conference Carolinas Coach of the Year Award.

Sharing a Passion



The travel group

Converse students and faculty travel to Germany to experience the transformative and culture-crossing power of music.

by Dr. Susan Lyle

The “Festwoche Klassischer Musik” has been held during the last week of September in the Black Forest region of Germany since 1997 and I have participated in many concerts there. Shortly after my performance in 2011, I proposed that the Petrie School of Music arrange a performance tour to Germany for students and faculty for the fall of 2012 so that Converse could experience this beautiful music festival.

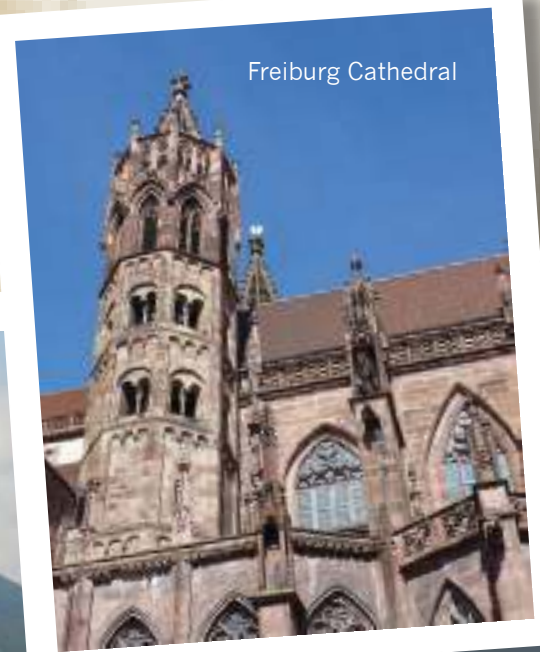
Our plans took shape quickly and our travel dates were set—two days for travel and eight days to experience the Black Forest and the Alsace regions of Germany and France.

The Converse Ensembles included: Chamber Singers, a Woodwind Quartet and a String Trio with all performing in a mid-week “All Converse Concert.”

For many in our group, this trip was their first time travelling outside the US. Excitement about our performances was equal to our excitement about experiencing a different country. From new foods to fairytale countryside to exquisite architecture and historical tours, each day was an adventure. During our visit, we stayed with host families in order to learn more about the German people, their rich culture and to hear the language as it is spoken in everyday life. This experience was

more fulfilling than we could have hoped for; new friendships were formed between students and their “Host Moms and Dads.” Many of the host families devoted the entire week to spending time with the students!

Rehearsing with the German musicians was a unique opportunity to learn that music is a universal language. Our performance together was emotional as our shared musical passion brought us together as one. “It wasn’t about the notes on the page, it was about creating the musical moment,” remarked Brittany Allison ’13. It’s an experience she says she has brought back with her and incorporated into her music.



Freiburg Cathedral



for Music

In front of the Strasbourg Cathedral



Julie Tran '15 and Annie Tran '15 with their "Host Mom"



The "All-Converse" concert

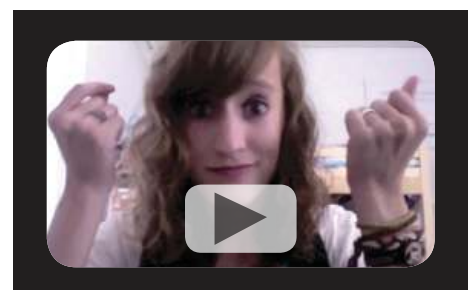


Highlights of the week-long festival were the two performances of the J.S. Bach concert presented first in the Achern and then in Oppenau. After only three rehearsals, the Bach Consortium, with support from musicians from the Petrie School of Music, performed Bach Cantata Nr. 100 and Cantata Nr. 11. Faculty soloists included Rebecca Turner, Susan Lyle, Keith Jones and Stafford Turner. A special moment of this concert was a stunning performance of the Concerto in D Major for two violins featuring Converse violin professor Sarah Johnson and German violinist Michael Klett.

with our friends in Germany and to open new windows of opportunity for many more tours. All who participated came home with an expanded world view, fond memories of exceptional music making and the desire to return again in the future.

My hope is to continue to foster the excellent relationship we developed

Dr. Susan Lyle is Associate Professor of Voice.

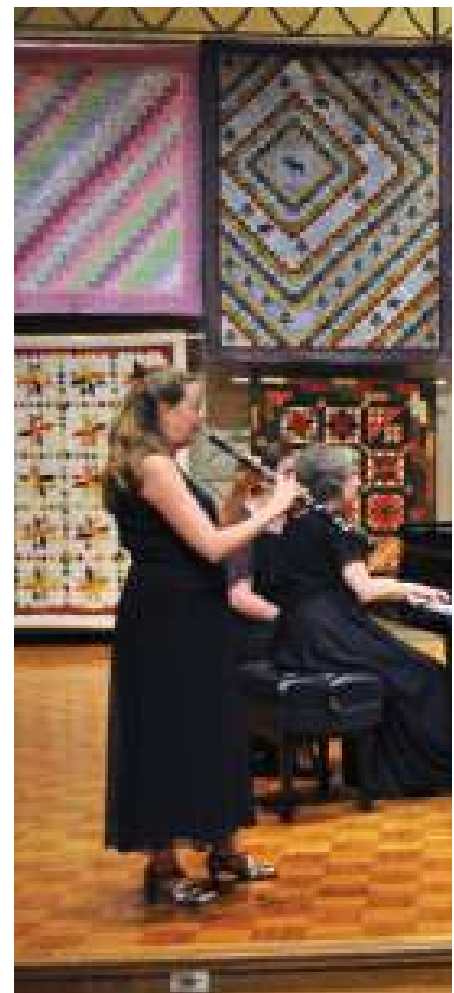


You Tube Music education major Maggie Haggerty '13 is a video blogger known to her online followers as *macmarge*. Watch her Germany travel adventures at converse.edu/maggie-in-germany.

Well, Butter My Biscuit!

by Cynthia Faber Smith

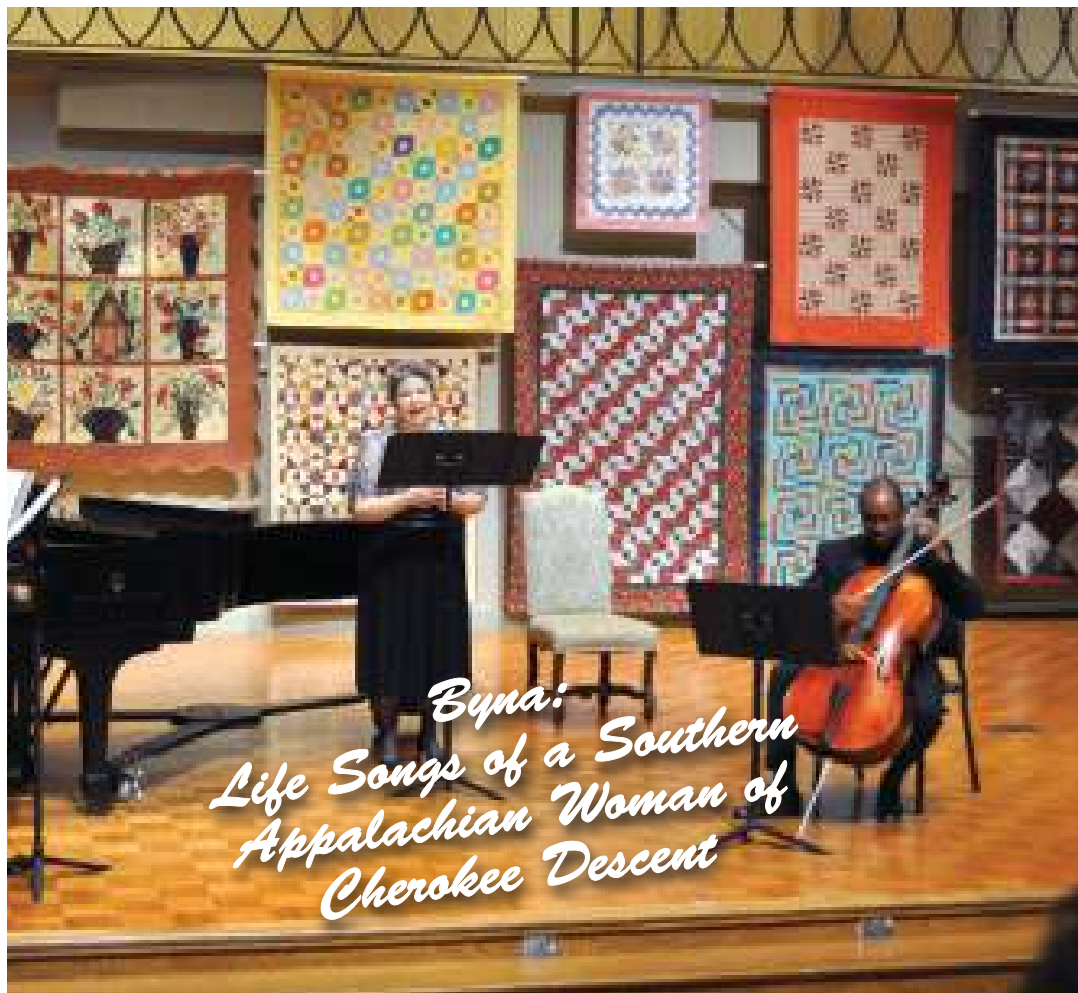
“Okra to Opera” served up a southern culture conference that had us licking our lips and asking for more . . . *please.*



How delighted I was when I received an invitation to my first meeting at Converse titled, “Southern Culture.” I had just arrived on campus, newly relocated from northeast Pennsylvania and so very thankful to be back in my home state after a career trajectory that kept taking me north. Pause for a minute to imagine what I guessed this meeting might be about—a primer for this finishing school drop-out? some kind of Converse initiation for new employees? Go ahead and laugh, I certainly did. But, I soon discovered the meeting was to plan promotions for “Okra to Opera: A Southern Culture Conference.”

Led by professors Dr. Anita Rose and Dr. Melissa Walker, “O2O” (as we came to call it), was the product of a 2011 creative collaboration grant designed to be part academic conference and part celebration of southern art, music and food.

The conference was held April 9–14, 2012, on the 50th anniversary of the Converse meeting of the Southern Literary Festival. An arm-long list of over 50 literary scholars, historians,



*Byna:
Life Songs of a Southern
Appalachian Woman of
Cherokee Descent*

musicians, farmers and experts in Southern cuisine gathered for an interdisciplinary look at southern culture—both high and low—in the 21st century.

I attended as many of the events as possible, a fortunate infusion of Southernness to help me fully come back to my roots. The schedule included literary readings and historical perspectives, a Southern foodways panel and an art exhibit, the Appalachian-inspired Byna concert one night and

the country soul music of the Swayback Sisters another!

The campus buzzed with excitement over the activities as students interacted with conference attendees. Like many, I was swept up by a wave of identity. The conference was about my place and my people—it was all about *me*. As the keynote address with authors Lee Smith and Hal Crowther asked, *Is There Still a Southern Culture?* Oh, yes, I can now answer, and I'm glad to be back in the thick of it.

The only criticism I heard of the week was people wanting more. So, in response to popular demand, Drs. Rose and Walker are planning another “Okra to Opera” in 2014 as part of the College’s 125th anniversary celebration.

The author is Director of Publications for Converse College.



*Student-curated
Johnson Gallery
exhibit*

2012–2013 Creative Collaboration Grants Awards and Collaborators

In 2008, Converse established a grant program open to faculty, staff and students to encourage cross-campus collaborations of creative teaching and learning. The program has awarded a total of 40 grants for a total of \$106,000.

One Day When I Am...

Women on Aging—an original and collaboratively-written performance that will tackle ideas ranging from beauty standards to inter-generational wisdom and humor that women experience at every age. (Melissa Walker and Chandra Owenby Hopkins)

Good for You Converse!—

a collaboration with Spartanburg’s Partners for Active Living to promote total body well-being activities at Converse. (Sandy Gordin, Molly Duesterhaus, Tammy Stokes, Margaret Moore, Bill DeLongis and Jasmine Middlebrooks)

Miss Representation—a film screening and discussion about representations of women, power and influence. (Tracy Ksiazak, Amy Cox, Melissa Walker and Suzanne Schuweiler)

Thom Pain: based on nothing—one-man show and discussion exploring the questions of life and life’s worth. (Boone Hopkins, Melissa Owens, Kelly Vaneman, Andrew Blanchard, John Bald and Marie LePage)

Girls’ Day 2013—

a free, annual event where over 400 girls ages 5–12 attend fun activities on campus. (Joy Couch, Regina Schantz and Jennifer Keiner)

The Second Converse Conference on Popular Culture—the second interdisciplinary, scholarly conference on popular culture. (Amy Cox and Madelyn Young)

Mystical Arts of Tibet—eleven monks from the Tibetan Buddhist community will teach about their views on compassion and world peace. (Jason Loscuito and Richard Higgs)



“WOW”

by Ruth Beals

I've always wanted to develop an interior design curriculum to comply with CIDA accreditation standards. When I joined the Converse faculty in 2008, I recognized that Converse had a very good interior design foundation. The dedicated professors, supportive administrators and quality students on this beautiful campus helped make this career goal a reality.

In July 2012, The Council for Interior Design Accreditation (CIDA) awarded a six-year accreditation to Converse praising the depth and breadth of our curriculum, specifically lighting design, sustainability, teamwork, multi-disciplinary collaborations, a global outlook and communication. Converse becomes one of only two accredited programs in South Carolina and 178 accredited programs worldwide.

CIDA-accreditation assures the public that an interior design education prepares students to be responsible, well-informed, skilled professionals who make beautiful, safe and comfortable spaces that respect the earth and its resources. Accreditation supports alumnae preparing for the NCIDQ certification exam and entering graduate programs or seeking employment in states with interior design licensing. Potential students are assured that courses are of the highest standards and directly relate to their future career.

Preparing for accreditation was a four-year process made possible by a generous donation of computers and classroom furnishings. The Betsy M. Campbell Foundation matched funds and in-kind gifts by alumnae Tracy Williamson Dart '91, Jill Radford Ferrell '86, Dorothy Newton King '71, Ann Davidson Marion '47, Susanne Jones Norwood '94, Gaile L. Patrick '91, Lorie and Don Secord, Kathy

W. Underwood '06, along with Campbell Meek & Associates Architects, Inc., Martha and Norman Chapman, Justin A. Converse, and Young Office who has employed many Converse interior design graduates.

Our accreditation team included myself and faculty members Frazer Pajak and Jane Hughes. We developed a demanding and continuous self-study that insured the interior design program improved each year by reviewing what we taught, how we taught it and the success of the students' learning.

After this rigorous preparation, we were ready to be evaluated by CIDA. The students rallied and developed overview information to prepare for the evaluation. When the seniors presented their mid-semester capstone projects to CIDA, I was proud of the praise they received. The visiting team was clearly impressed and complimented our students on their professionalism.

EQUIPMENT SCHEDULE

Item	Qty	Equipment Category	Manufacturer	Model Number
1	1	Stove, Commercial, Gas	Bosch Pkx	5000-G2
2	1	Range, Restaurant, Gas	Bosch Pkx	524-45
3	1	Case, Hot, Hot Meats	Capa Group/Neos Mesters	354-10-F
4	1	Case, Cold	Capa Group/Neos Mesters	354-10-F
5	1	Paragraden, Dishwasher	Sartair AP	354-10-F
6	1	Case, Work	Capa Group/Neos Mesters	174-4801
7	1	Case, Hot Meats	Capa Group/Neos Mesters	354-10-F
8	1	Case, Hot Meats	Capa Group/Neos Mesters	354-10-F
9	1	Case, Hot Meats	Capa Group/Neos Mesters	354-10-F
10	1	Paragraden, Floor-Tile	Sartair	354-10-F
11	1	Case, Hot Meats	Capa Group/Neos Mesters	354-10-F
12	1	Case, Hot Meats	Capa Group/Neos Mesters	354-10-F
13	1	Case, Hot Meats	Capa Group/Neos Mesters	354-10-F
14	1	Case, Hot Meats	Capa Group/Neos Mesters	354-10-F
15	1	Case, Hot Meats	Capa Group/Neos Mesters	354-10-F
16	1	Case, Hot Meats	Capa Group/Neos Mesters	354-10-F
17	1	Case, Hot Meats	Capa Group/Neos Mesters	354-10-F
18	1	Case, Hot Meats	Capa Group/Neos Mesters	354-10-F
19	1	Case, Hot Meats	Capa Group/Neos Mesters	354-10-F
20	1	Case, Hot Meats	Capa Group/Neos Mesters	354-10-F
21	1	Case, Hot Meats	Capa Group/Neos Mesters	354-10-F
22	1	Case, Hot Meats	Capa Group/Neos Mesters	354-10-F
23	1	Case, Hot Meats	Capa Group/Neos Mesters	354-10-F
24	1	Case, Hot Meats	Capa Group/Neos Mesters	354-10-F
25	1	Case, Hot Meats	Capa Group/Neos Mesters	354-10-F
26	1	Case, Hot Meats	Capa Group/Neos Mesters	354-10-F
27	1	Case, Hot Meats	Capa Group/Neos Mesters	354-10-F
28	1	Case, Hot Meats	Capa Group/Neos Mesters	354-10-F
29	1	Case, Hot Meats	Capa Group/Neos Mesters	354-10-F
30	1	Case, Hot Meats	Capa Group/Neos Mesters	354-10-F
31	1	Case, Hot Meats	Capa Group/Neos Mesters	354-10-F
32	1	Case, Hot Meats	Capa Group/Neos Mesters	354-10-F
33	1	Case, Hot Meats	Capa Group/Neos Mesters	354-10-F
34	1	Case, Hot Meats	Capa Group/Neos Mesters	354-10-F
35	1	Case, Hot Meats	Capa Group/Neos Mesters	354-10-F
36	1	Case, Hot Meats	Capa Group/Neos Mesters	354-10-F
37	1	Case, Hot Meats	Capa Group/Neos Mesters	354-10-F
38	1	Case, Hot Meats	Capa Group/Neos Mesters	354-10-F
39	1	Case, Hot Meats	Capa Group/Neos Mesters	354-10-F
40	1	Case, Hot Meats	Capa Group/Neos Mesters	354-10-F

COMMERCIAL KITCHEN FLOOR PLAN

THE FUNKY MONKEY BAKERY & COFFEE HOUSE ELIZABETH DAVIS • CONVERSE COLLEGE • SPRING 2012

1. BAKERS PRIDE GDCO-G2
2. GARLAND STOCK POT RANGE
3. EAGLE GROUP WORK TABLE
4. EAGLE GROUP DISHTABLE
17. EQUIPEX PANINI GRIDDLE
38. TRUE FOOD SERVICE SANDWICH PREP

Fairfax Hospital Birthing Center

Halway and Nurse's Station

Custom Water Wall with Metal Mox Designs Metal Column Covers

Custom Herman Miller Nurse's Station

Circa Modular Seating Nurture by Cascade Walnut and Aluminum Finish

Custom Floor Side Table KARE Designs Aluminum Finish

Dak Laminex for the Front of Nurse's Station

Upholstery Kravet Green Walnut Finish

Walkcovering Core Wa Malayan Chambray A

Solid Surf Countertops Nurse's S

Converse's Interior Design program wows accreditation officials.

The students were truly the stars during the accreditation visit. While only current classes participated in the meetings and presentations, the alumnae 2009, 2010 and 2011 were represented in the display of student work. Krista Williams '10 and Francesca Mayer '11, who now earned master's degrees in sustainable interior design and are LEED green associates, helped demonstrate global awareness through their capstone projects based in Jamaica and Peru. Williams is now with Palmetto Interiors in Charleston and Mayer is an interior designer IBRID in Lima, Peru.

Hope Williams '11, a designer for Alfred Williams in Greenville, SC and Amanda Ripley '11, a graduate student at the Corcoran College of Art and Design in Washington, DC, had their woven textiles, hand-drawn perspectives, business plans and capstone projects of 27,000 square-foot interiors displayed. Ripley shipped several projects that she used for her application into graduate CONVERSE.EDU

school for the display. "I especially wanted my work with Hubbell Lighting to be included. We learned so much at their seminars," said Ripley. Hubbell Lighting, headquartered in Greenville, SC, offers annual seminars at their Lighting Solutions Center educational facility for the students in our lighting course.

The CIDA team's evaluation remarks about Converse were exemplary. One CIDA member stated that if he could tweet just one word to describe the students' writing and speaking skills, it would be "wow." Vice-President for Academic Affairs, Jeff Barker, reported that the accreditation team's evaluation was "the best exit interview I've attended during my years at Converse."

News of the accreditation lit up the Interior Design Facebook page with



The accreditation process began by acquiring the necessary equipment for the students, involved four years of curriculum evaluation and improvement and was capped-off with impressive student presentations, says Beals (above right) with a student.

notes of congratulations, including a message from Anna Beatriz Marengo '12, currently in graduate school at The New York School of Interior Design: "The CIDA accreditation is one of the greatest honors an interior design program can receive. This prestige will forever impact my career as my Converse education will be recognized as a top quality interior design program."

Ruth Beals is the Owens Associate Professor of Interior Design and is the coordinator of the Interior Design program.

We checked-in with four Converse students and asked how their year was going so far:

FRESHMAN **Taylor Stevens '16**

HOMETOWN **Myrtle Beach, SC**

MAJOR **Undeclared**



Freshman move-in day was great because the whole campus helped us. I barely had to carry anything! Unpacking was a little tougher trying to find a place for everything. It's been exciting coming to Converse but definitely bittersweet. It's difficult to be away from home.

I've enjoyed making my own schedule and developing my own routine. I love that I can just get up and walk to class so I'm actually getting more sleep than in high school!

I am undecided as far as major goes. I keep changing my mind! The professors and the Center for Student Development and Success have encouraged me to explore different options that fit my personality. I'm still trying to figure out my personal style and who I am.

The most memorable event of freshman year has to be Big Sis/Li'l Sis week. I've never felt so much love in one place before. I am part of a triplet (my Big has three Littles). Our Big is the BEST. She continues to check up on us even though the week is over and I didn't expect that. I've since learned life-long friendships are formed through Bigs and Littles. I hope I come back to my ten-year reunion and have kept in touch with everyone!



SOPHOMORE **Kayla Duran '15**

HOMETOWN **Clover, SC**

MAJOR **Deaf Education**

My sophomore year is a little more relaxed than my freshman year. I have learned that it's okay to have nights where you don't study. Freshman year I was always studying but this year I have been staying ahead so that I can plan some down time. I've learned that college is about knowing when to buckle down and focus on school but also making time for yourself to relax, have fun with friends and make new memories.

I have always wanted to be a teacher and I discovered an even greater passion for working with deaf children here at Converse. The College is located very close to the South Carolina School for the Deaf and Blind in Spartanburg so we have opportunities for practical experience. I contacted the athletic director at SCSSDB letting her know my cheerleading background, major at Converse and my experience using American Sign Language. I offered to help coach the SCSSDB cheerleaders. She was thrilled to have a college student come help the team. I have now choreographed two competition routines for the squad. We took 4th place last year at competitions and are pumped for this year!

Converse is helping me realize my career dream of teaching first grade at a public school or SCSSDB and interpreting during the summers.

JUNIOR **Sarah Belue '14**

HOMETOWN **Greer, SC**

MAJOR **Economics, minor in History**

The juniors have been so excited this year to become Big Sisters, to continue this Converse tradition and welcome the next class of students. I can't think of anything to compare to the anticipation because it was just that exciting.

My best advice to my three Littles is what I have learned the most about myself at Converse. As a freshman, I tried to be the perfect "Connie Converse" but I soon realized that Connie Converse is not an individual student. She is the combination of all Converse women: a brilliant student, a determined leader and a compassionate volunteer. We all join together to create this image. I am still figuring out who I am in that mix. It's a journey in progress!

I have lived both on and now off-campus. As a PEAS (Peers Enhancing Academic Success), I co-founded a commuting student PEAS program to address the different needs and college experience of commuting students.

I also work outside of Converse for the City of Greer Parks and Recreation Department. It has been a great compliment to my education. I am able to transfer my skills between work, economics classes and PEAS. My work and my heart are deeply invested in my hometown. I love my job because it provides me with an opportunity to be involved in my community.



SENIOR **Paris McAllister '13**

HOMETOWN **Atlanta, GA**

MAJOR **Biochemistry, minor in Philosophy**

College will be over soon. It is going to be weird not to be around the friends that I have been living with for four years. This year, I live in the new senior apartments and it's been a great way to transition from college housing to having a real apartment. This year is also a bit stressful. We all wonder where we will end up after this year.

My friends have been with me through papers, exams, heartaches, tears, laughs—anything you can name. We call our group of 15 "The Gregarious Gracies" and met at a leadership retreat our freshman year. We are all different and have come to Converse from all over the world!

The Gracies rallied around me junior year when I organized "A Ceremony of Stereotypes" a tribute/awareness event for the death of Trayvon Martin. The sisterhood of my friends helping me with that event will be my most cherished memory of Converse.

Through my broad involvement in leadership opportunities at Converse, I've discovered a love for volunteer work and will have completed over 1000 volunteer hours by graduation. As a Bonner Leader, I have been to Maui, HA and Gulfport, MS with Habitat for Humanity. These trips have helped me realize I want to be a humanitarian first and a physician second. My goal is to open up clinics in third world countries and specialize in working with children with cleft lip and palate.

BOOKS

The Welcoming House: The Art of Living Graciously

by Jane Boatwright Schwab '77
and Cindy Smith

Ever wonder when you walk into a particular home or room why you feel immediately comfortable? Interior design masters, Jane Schwab and Cindy Smith obviously know the secret and are graciously (as the title implies) sharing that secret in their new book. Each page of the book beckons with luxurious photographs inviting you to come in and stay awhile. The artful interiors of Schwab and Smith carry their signature restful palette and timeless, elegant but eclectic approach to fluent Southern hospitality and family living. The authors generously share their vision and process for eight homes,



Preview
the book
circainteriors.com

combining lessons learned from their acclaimed stores and decorating firm, Circa Interiors, with the functional, adaptable needs of each space.

The Welcoming House is a dreamscape of comfortable living with a seat at the table for every reader. Acclaimed interior designer, Bunny Williams, said of the book in her foreword that it is "... a book to treasure, to make notes from, and to be inspired by."

Book signing and presentation

Reunion Weekend

April 13, 2013 at 2:30 pm

Converse.edu/reunion

Learn more at Reunion Weekend when the authors will sign copies and give a presentation. See Converse.edu/reunion for more information.

Attend a book tour event near you. See the tour schedule at circainteriors.com.

In the Garden of Stone

by Susan Tekulve, PhD, Associate Professor of English

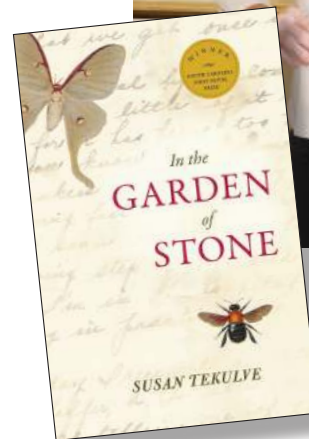
Set in the coal country valleys and mountains of Virginia and West Virginia, *In the Garden of Stone* is a multi-generational tale about the nature of power and pride, love and loss, and how one family endures estrangement from their land and each other in order to unearth the rich seams of forgiveness.

In the Garden of Stone, will be published by Hub City Press of Spartanburg and debut at the South Carolina Book Festival in May 2013 as the winner of the South Carolina Arts Commission 2012 South Carolina First Novel Competition.

"There's a remarkable sensitivity to the mystery of how place affects human souls, and descriptions of the land are masterful, always interesting and never overdone, integrated seamlessly into the narrative," said competition judge and novelist Josephine Humphreys. "This is a writer who definitely has what it takes to continue on to more books and make a real contribution to Southern literature."

Tekulve's nonfiction, short stories and travel essays have appeared in numerous journals, including *Denver Quarterly*, *Beloit Fiction Journal*, *The Literary Review* and *The Georgia Review*. Her story collection, *My Mother's War Stories*, received the 2004 Winnow Press fiction prize. Tekulve recently published a short story collection, *Savage Pilgrims* from Serving House Books.

For more information and to order the book, visit hubcity.org.

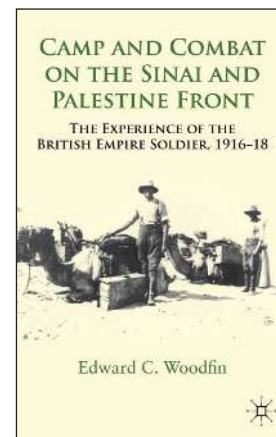


Dr. Tekulve is the winner of the South Carolina Arts Commission 2012 South Carolina First Novel Competition.



Camp and combat on the Sinai and Palestine Front

by Edward C. Woodfin, PhD,
Associate Professor of
History



Dr. Woodfin describes his book as being about regular people in World War I and what their lives were like on the Sinai and Palestine Front—a part of World War I that most people don't know about, even though hundreds of thousands of British Empire soldiers fought there. "It was one of the biggest wars in the history of the Middle East," says Woodfin. "But it's been completely overshadowed by the Western Front."

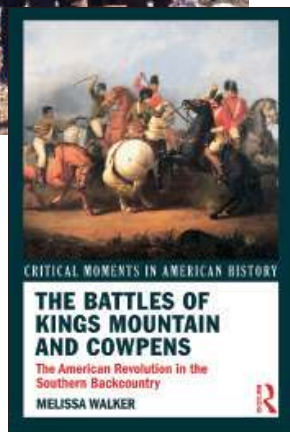
Although an academic book, it's well suited for the general reader. It's a book of basic human stories amidst thirst and heat and flies and fighting and terror and loss. It illuminates the hardships, variety and complexity of the soldier's experience in this oft-forgotten but important campaign and explains the causes behind the many faces of this war.

Research for the book took Dr. Woodfin around the world, starting in Britain, then west to Australia and New Zealand (where he spent a year on a Fulbright Post-Graduate Fellowship). Dr. Woodfin then travelled westward again visiting the Sinai in Egypt and doing more research in Scotland. He worked in 16 different archives, reading letters and diaries from hundreds of British Empire soldiers (from England, Scotland, Wales, Ireland, Australia, and New Zealand).

Browse inside this book at palgrave.com.

The Battles of Kings Mountain and Cowpens: The American Revolution in the Southern Backcountry

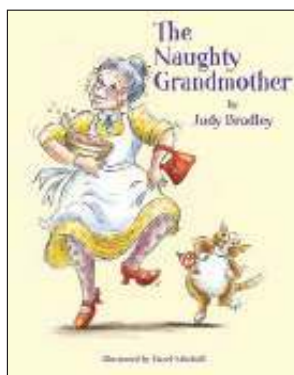
by Melissa A. Walker, PhD,
George Dean Johnson, Jr.
Professor of History



On the 232nd anniversary of the Battle of Cowpens, surrounded by a living history encampment and firing demonstrations, Dr. Melissa Walker read from her latest publication *The Battles of Kings Mountain and Cowpens: The American Revolution in the Southern Backcountry*. Her audience was a mix of area locals, students, history scholars, Revolutionary War faithfuls, and the simply curious who gathered to hear an important new perspective on the role of the South in the resolution of the fighting. The American South is so identified with the Civil War that people often forget that the key battles from the final years of the American Revolution were fought in Southern states. With careful attention to political, social, and military history, Dr. Walker's book concentrates on the communities and events not typically covered in books on the Revolutionary War.

The Naughty Grandmother by Judy Fessey Bradley '64

"My love for writing came from my time at Converse," says alumnae Judy Fessey Bradley. "I wrote many short stories while I was there and published several in *The Conversationalist*. Converse refined my writing talent. I have a poem that I wrote when I was 20 years old and a student at Converse. I can still say that it's the best poem I've ever written!"



The Naughty Grandmother is the charming story of Naughty Nana, a grandmother full of fun and mischief when it comes to spending time with her grandchildren. Bradley has enjoyed fun feedback from writing the book. "A friend told me she'd

always been the stiffest grandmother in the world until she read my book. Then she realized that she could have all the fun with her grandchildren and their parents could be the strict ones!"

100% of the book profits benefit the Children's Hospital at Memorial University Medical Center, Savannah, GA. Proceeds have already provided five portable "media centers" for children who can't get out of bed. Proceeds have also helped fund "digital clouds" on the hallway ceilings so that children have something happy and calming to look at as

they are being moved to surgery.

The book is available online at amazon.com and barnesandnoble.com

Converse REUNION 2012





Picture Yourself at Reunion 2013

April 12-13

converse.com/reunion

Don't miss these events at Reunion 2013!



Jane Boatwright Schwab '77 presentation and book signing



Concert on the lawn featuring Edwin McCain and The Blue Dogs



Converse ghost stories and history with Dr. Jeff Willis



Honor and Memorial Gifts

July 1, 2011–June 30, 2012

Honor Gifts

FRANCES WILLIAMSON ANDERSON '65

The Rev. Lucy R. Aldridge '65

WENDI WHITE ARMS '93

Makini R. Slaughter '07

BROOKE LOWN BARNES '03

Mr. and Mrs. Luther L. Lown

MARTHA PAXTON BEALE '49

Margaret R. Beale

AMY WARREN BEATY '81

Jean Elise Warren '75

DR. S. DAVID BERRY

Makini R. Slaughter '07

JANE HARLAN BESON '87

Mr. and Mrs. John R. Harlan

BIOLOGY FACULTY

Charlotte Boone Halicioglu '64

MARY CAROLINE BLODER '12

Mr. and Mrs. Gary F. Bloder

KATHERINE T. BLUMER

Sherry Anne Blumer Gettys '78

PROFESSOR MAC BOGGS

Anonymous

DR. NANCY S. BREARD

Virginia Gibson Pratt '07

RACHEL JONES BROWN '04

Courtenay B. Mims '04

MARY ALICE INGRAM BUSCH '50

Helen Oeland Coker '59

CLAIRE ROPER BUSH '96

Carolyn Hill Coleman '96

MORGAN ELIZABETH JULIE BYRN '10

William Womack Byrn, Jr.

CLASS OF 1950

Jeannette Pritchett Blake '50

CLASS OF 1954

Jeanne Foster-Clark '54

CLASS OF 1957

Jane Powell Crowder '57

CLASS OF 1975

Anne Roberts '75

CLASS OF 1986

Patricia Lynn Cheney '86

CLASS OF 1996

Jenny Williams '96

CLASS OF 1999

Deanne Tyner Frye '99

CLASS OF 2007

Brittany Nicole Harrelson '07

CLASS OF 2011

Ashley Danielle Raines '11

RENEE COATS

Fran Renee' Rogers '11

SUSAN SHEEHY COLE '73

Ruth S. Douglas

EMILY ROBBINS COLLINS

Jennifer Harris Robbins '99

ANNA HABISREUTINGER CONVERSE '98

Carolyn Hill Coleman '96

CONVERSE ALUMNAE BOARD

Grazier Connors Rhea '74

CONVERSE THEATRE AND ART HISTORY PROGRAMS

Claire Count '89

DONNA KAISER CROFT '77

Susan Hull '77

Elizabeth Brunel Tarrant '77

NAN BRABHAM CURLEE '70

Susan Brabham DesPortes '65

ROBERTA TIMMONS DANIEL '71

Catherine Clarkson Robertson

JANIS I. DENGLER

Virginia Ogletree Ashmore '42

Sharon G. Boyd '72

Dr. and Mrs. Ben W. Dawsey, Jr.

(Debby D. Dawsey '87)

Katherine Fragassi Ezickson '79

Katharine Stephens Slemenda '66

Mr. and Mrs. John R. Sullivan

(Ann Marie Sullivan '95)

Doris Turner '81

Rita Vinson

CATHERINE CRANFORD ELLIOTT '96

Carolyn Hill Coleman '96

DOROTHY HUNTER THAMES ELLIS '55

Carolyn Thames Lotz '81

SANDRA HAWKINS FERGUSON '75

Catherine Hawkins Thompson '88

ELAINE FINKLEA FOLLINE '58

Mr. and Mrs. Bud Wilkerson

PAM HUGHES FOSTER '96

Carolyn Hill Coleman '96

PAGE SPILLANE FOWLER '95

Mr. and Mrs. William M. Spillane

JENNIFER LOW FRITH '00

Mr. and Mrs. Thomas P. Frith

KATHERINE COLBURN FULMER '96

Carolyn Hill Coleman '96

DR. RICHARD GANNAWAY

Adelaide Capers Johnson '69

CYNTHIA GREENE GOLDSMITH '96

Carolyn Hill Coleman '96

NANCY HARLAN GOODING '83

Mr. and Mrs. John R. Harlan

NOVIE MCCREE GREENE '62

Mr. and Mrs. Ernst A. Upmeyer III

WINKIE GREER '62

Lydia Willard Kellett '62



Carlos DuPré Moseley

Carlos DuPré Moseley took piano lessons at Converse as a child. It was at Converse where he heard his first symphony orchestra, his first Verdi Requiem, and his first organ toccata. He often said Converse introduced him to the world of music and instilled in him a passion for music. This passion inspired a celebrated 30-year career as managing director, president and chairman of the board of the New York Philharmonic. Highlights of his career included moving the Philharmonic from Carnegie Hall to the new Lincoln Center in 1962, and overseeing the reconstruction of its home there, Avery Fisher Hall and initiating New York City's free Concerts in the Park series in 1965. Moseley was named an Honorary Member of The Philharmonic-Symphony Society of New York, Inc. in 2001.

BETSY CRANE GRIFFITH '72
Betty James Montgomery '72
Ellen Alsop Worth '72

BETSY BREWER GRIMES '77
Jade Gale Northrup '76

ELEANOR HERBERT HALE '48
Elodie Hale Craig '74

PAM ELLIS HALL '77
Elizabeth Brunel Tarrant '77

MARY LIB SPILLERS HAMILTON '57
Jane Powell Crowder '57

EMMA CARMICHAEL HARRILL '96
Carolyn Hill Coleman '96

PAMELA HALL HAWLEY '77
Elizabeth Brunel Tarrant '77

DR. DONALD G. HENDERSON
Patricia Parsons Hickerson '64

STEPHANIE BARRETT HENSON '95
Mr. and Mrs. Kenneth R. Barrett

EMMA GRACE AND BLAIR HILL
Melissa Hall Hill '97

MILES FREDERICK HOFFMAN
June Becker Sereque '86

DR. JERRY J. HOWE
Martina Annette Jones '06

CLAIRE MARIE BENEDICT HUFF '96
Carolyn Hill Coleman '96

DR. JAMES A. HYMAS
Kimberly Terry Carver '80

CATHERINE CULLER INABNIT '68
Sarah Evans Lockwood '69

DR. HENRY J. JANIEC
Virginia Griffith Nanzetta '62

**JANE MARIE HANCOCK
JENNINGS '55**
Hagood Huckabee Potter '55

GAIL RAWLS JETER '77
Elizabeth Brunel Tarrant '77

**ELEANOR KATHERINE
JOHNSON '12**
Mr. and Mrs. John E. Johnson III

**MR. AND MRS. GEORGE DEAN
JOHNSON JR.**
(Susan Phifer Johnson '65)
Mr. and Mrs. Don Wildman
(Alanna Ivey Wildman '71)

LUCIA CLEVELAND JOHNSON '67
Celeste Talmadge Graves-Hoyal '67

LUCY RANDOLPH JOHNSON '08
Mr. and Mrs. Van Douglas Johnson

MELISSA DAVES JOHNSON '69
Carolyn Hill Coleman '96

SUSAN PHIFER JOHNSON '65
Carolyn Hill Coleman '96
Mr. and Mrs. David Johnson

**MRS. SUSANNA P. JOHNSON
AND MR. TIMOTHY M.
SHANNON**

Anne Wing Coffey '65
Mr. and Mrs. Don Wildman
(Alanna Ivey Wildman '71)

ANN HUDGENS KAREGEANNES '56
Nancy Bow Bane '71

LINDSEY E. KELLY '11
Mr. and Mrs. Stephen S. Kelly, Jr.

LETTY LYKES KNAPP '61
Antionette Jackson Myers '61

MARTHA HASLETT LADD '78
Lucy Haslett Evans '71

**ELIZABETH FARMER
LANCASTER '96**
Carolyn Hill Coleman '96

KATIE KUERSTEINER LARUE '04
Courtenay B. Mims '04

BRIANNE CROSS LEFTWICH '08
Michael F. Miller and Mary W. Cross

DR. GEORGE LUCKTENBERG
Dr. Sandra Chucalo Turner '73 and
Dr. Ronald Turner '73

GAYLE G. MAGRUDER
Betty Blanton Lewis '72

CARLA ELIZABETH MALONE '96
Carolyn Hill Coleman '96

ANN DAVIDSON MARION '47
Sarah Whitfield Marion '08

CHRISTA LINDSEY MARTIN '15
Stephanie Frick Martin

AMBERIN G. MATHEWS '93
Doris Bennett Mathews '80

DR. SPENCER R. MATHEWS
Caroline Dilworth Minicozzi '95

SARAH ELIZABETH MCAULIFFE '12
Mr. and Mrs. Paul D. McAuliffe

TENA MCCORMACK
Ruth McCormack McDaniel '87

CHERYL WOODY MCINTYRE '95
Laura Kate Garner '95

E. T. MCLEAN
Lindsey Parker McCall '05

**CHRISTINE ELIZABETH
MCMAKIN '04**
Courtenay B. Mims '04

KAYLEE KRISTINE MCMULLAN '12
Mr. and Mrs. Bruce McMullan

ANNA HAMILTON MCNAMARA '15
Lou Pittman Lindsey '83

ELISABETH KINNEY MCNIEL '89
Margaret P. Kinney

KATHERINE WILLIS MEDLOCK '73
Katherine Nicole Medlock Scott '99

See a slideshow tribute to Carlos Moseley and share your reflections on his life at converse.edu/carlosmoseleytribute.

(1914–2012)

Moseley was instrumental in founding Converse's Friends of the School of Music Chamber Music Series in 1983 to bring internationally renowned musicians such as Yo Yo Ma, Charles Wadsworth and Marilyn Horne to the College.

In 1970, Converse awarded Moseley an honorary doctorate at the dedication ceremony for Blackman Music Building. After serving on the Converse College Board of Trustees from 1981–1995, Moseley became a Life Trustee. He helped secure

“He could take an artist,
a piece of music, an
audience and a
starry sky and create
a night of magic.”

DICKSIE BROWN Cribb '46

support for Converse from numerous foundations, and his personal gifts have impacted the Converse Annual Fund, Mickel Library, Friends of the Petrie School of Music, and the Lawson Academy of the Arts.

In 2004, Converse presented him with the Dexter Edgar Converse Award, the College's highest honor, and renamed the Friends of the Petrie School of Music Chamber Music Series in his honor. The series celebrates its 30th anniversary season this year. For more information, see converse.edu/moseleyseries.

MICHAEL MOSS MILLER

Dr. Spencer R. Mathews

ASHLEY GROSS MILLINOR '94

Carolyn Hill Coleman '96

**COURTENAY BRAILSFORD
MIMS '04**

Kirsten Jones Moorman '84

AUTAUM LANCE MORANT '01

Jannie Lance Morant

LEIGH WARREN MYCOFF '80

Jean Elise Warren '75

DANIEL O'NEAL

Paul McAuliffe

REBECCA RAMSAUR PENNELL '53

Jane Powell Crowder '57

BLAKLEY WILLIAMS PEPPER '12Mr. and Mrs. Stephen D. Peper
(Cindy Williams Peper '77)**ANNA WIMBERLY PIERCE '92**

Michael L. Pierce

RACHEL PIERCE

Jane Briggs Rankin '63

DR. ROBERT W. POWELL, JR.

M. Fern Powell '86

MARGARET LYLES RAMBISH '78

Dr. and Mrs. Clarence C. Lyles

RED DEVIL CLASS OF 2007

Brittany Nicole Harrelson '07

DR. THOMAS J. REEVES, SR.Adelaide Capers Johnson '69
Emily Horton Wood '68**LINDSEY-DENEE TAYLOR****REUSS '13**

Sharon T. Reuss

ROBBIE MOSELEY RICHARDS '92Dr. and Mrs. Willie B. Moseley
(Sabra McDaniel Mosely '65)**JANE BOATWRIGHT SCHWAB '77**Carol McGinnis Alexander '77
Jean Parks Bunch '77
Donna Kaiser Croft '77
Susan Hull Dickerson '77
Nancy Boatwright Holt '79
Irene Robertson Long '77
Elizabeth Brunel Tarrant '77**ANNE RICHARDSON SEABROOK '82**

Betty Anne Richardson '58

**ASHLEIGH ELIZABETH
SIERADZKI '10**

Susan Renee Wines '08

**KATHARINE STEPHENS
SLEMENDA '66**

Starr Lockhart Carr '96

ELLEN THOMPSON SMITH '96

Carolyn Hill Coleman '96

DIXIE CRUM STONE '62Mimi Little McKinney '62
Juliana Blackwood Stevenson '62**MR. AND MRS. TED. B. SUMNER,
JR.**

Stacy Sumner Jesso '78

**KATHERINE GWATHMEY
SWANN '37**

Mary Gwathmey Michaux '73

**THE ALUMNAE AND DONOR
RELATIONS OFFICE**

Carolyn Hill Coleman '96

**THE OFFICE OF INSTITUTIONAL
ADVANCEMENT**

Carolyn Hill Coleman '96

SUSAN ROGERS TOWNSEND '84

Joel W. Townsend

**THEODORA WARREN TRUESDALE
'74**

Theodora Gregorie Warren '48

DR. CHRISTOPHER VANEMAN

Makini R. Slaughter '07

APRIL MARIE VERGARA '02

Bridgett M. Vergara '01

DR. MELISSA WALKER

Dr. Neal Elizabeth Millikan '01

CHEVELLE LEIGH WALSH '09

Jeanette Heiterer

SARAH CAITLIN WARRICK '12Mr. and Mrs. George Thomas
Warrick**ARNISHA WHITE '14**

Celeste Talmadge Graves-Hoyal '67

ELLEN LELAND WILHOIT '84

Nancy Smith Gage '82

JEANNETTE CAROL WILLIAMS '96

Carolyn Hill Coleman '96

DR. JEFFREY R. WILLIS

Rebecca Roland Hyleman '99

BETTY RICHARDS WILSON '95

Laura Kate Garner '95

JANE MARION WILSON '04Carolyn Hill Coleman '96
Courtenay B. Mims '04**ELIZABETH YORK AND THE
MUSIC THERAPY PROGRAM**

Alison Turner Watson '03

Memorial Gifts

PORCHER B. D. ANCRUM

Polly Hill Woodham '51

**MARY ELIZABETH BELSER
ARNOT '58**Frances Hasell LaBorde '58
Sally Mason Maynard '59
Mr. and Mrs. C. Connor McGehee, III
(Brenda Burke McGehee '64)
Mr. and Mrs. Frank Mountcastle, Jr.
Mr. and Mrs. William T. Nolley
Jocelyn L. Ober
Mr. and Mrs. Charles W. Sexton
Blair D. Stambaugh
Mr. and Mrs. C. Daniel Stevens
Dr. and Mrs. E. Armistead Talman
Dianne Hall Tew
Mr. and Mrs. Daniel L. Williams, Jr.
Mr. and Mrs. Donald P. Whitley
Mr. and Mrs. R. Tyler Whitley**MR. AND MRS. RICHARD S.
BARCLAY**

Pamela Stark Barclay '66

**MR. AND MRS. WARREN E.
BARKER**

Mr. and Mrs. Leo Lynch

MARY GUNST BARNETMr. and Mrs. Jack A. Kuhne
(Lucy Simpson Kuhne '66)
President Betsy A. Fleming
James G. Harrison, Jr.**ANNIE SMITH BEARDEN**

Carolyn Bearden Brown '51

KATHY H. BELSER '75

Robin R. Hutchison '75

BESSIE MCCRARY BOWIE '35Mr. and Mrs. Charles Jenkins
Sweat
(Gladys Williams Sweat '53)**DIANA MORRIS BOULWARE '64**

Totty Brooks Wilkerson '64

JULIA DARGAN BRADSHAW '88President Betsy A. Fleming
Sandra Speare Parker '62**JANET CARTER BRIDGES '93**

Mr. and Mrs. Jerry C. Bridges

ELIZABETH WHITE CALVERT '84

Patrick Goold

NANCY CARROLL '52

Elizabeth Hargett Smith '52

ANN BAUM CARY '57Henry B. Brown
Elizabeth M. Bredrup
Charlie Danzoll
Graham Danzoll
Judith F. Danzoll
Mr. and Mrs. James D. Davis
Mr. and Mrs. Peter A. Frey
Mr. and Mrs. Robert P. Grymes
(Betty Hawthorne Grymes '59)
Mr. and Mrs. Miles Cary Johnston, Jr.
Mr. and Mrs. Gibbs Jones
Mr. and Mrs. Orville H. Jones
Leschetizky Association
Mr. and Mrs. Malcolm H. Livick
(Linda Roller Livick '57)
Dr. and Mrs. J. Gary Maynard Jr.
Brenda B. McGehee '64
Deane H. Mountcastle
Staige D. Nolley
Jocelyn L. Ober
Mr. and Mrs. Charles W. Sexton
Blair D. Stambaugh
Mr. and Mrs. C. Daniel Stevens
Dr. and Mrs. E. Armistead Talman
Dianne H. Tew
Laura Vranian
Westham Ridge Civic Association
Mr. and Mrs. Donald P. Whitley
Mr. and Mrs. R. Tyler Whitley
Mr. and Mrs. Daniel L. Williams, Jr.**SALLY HARMON CAUGHMAN '68**Marvin J. Caughman
Betty Arthur Hardaway '71
Elizabeth Morris Howell '68
Ann Carol H. Price '61**ALLAN CHENEY II**

Patricia Lynn Cheney '86

**MIN MURRAY HASELDEN
CHEVES '68**

Elizabeth Morris Howell '68

**KATHRYN ELIZABETH
CLINKSCALES '34**

Kathryn Blake Pearce '57

JULIE ANNE COHEN '76

Elizabeth Gordon Martin '76

DR. ROBERT T. COLEMAN
Jade Gale Northrup '76

ELIZABETH KELLEY CORBETT '55
Karen C. Cheatham '81

HENRIETTA SUE MOORE CRAIG 1900
Craig Harris McDaniel '65

DR. PERRY DANIELS
Debra Hudson Harres '75
Ross A. Magoulas '56

CORNELIA WATSON DASHER '65
Cornelia W. Pruett

**ADA MARIAN HUNTER
DESCHAMPS '57**
Cecelia Shuler Ulmer '57

CAMILLA HILL DEYTON '74
Cynthia Catherine Khanlarian '74

MYRA DOSTER
Maxie McDuffie Haltiwanger '69

BYAH THOMASON DOXEY '48
Kent Doxeey Rigsby '72

SARA FLOYD DUNBAR '35
Macky Dana Dunbar '79

MR. AND MRS. VAN V. DYE
Theresa Dye Schoettler '73

LOUISE JORDAN EARLE '37
Ben and Sunshine Norwood

Laurie Ann Egeland '05
Laura C. Bauknight '87
Mr. and Mrs. Dan Breeden
Jennifer C. Evins
Dr. and Mrs. David G. Ike
Mr. and Mrs. George Dean
Johnson, Jr.
(Susan Phifer Johnson '65)
Catherine Rainey
Mr. and Mrs. Donald Bruce Wildman
(Alanna Ivey Wildman '71)

WILLIAM C. ELLIS
Mr. and Mrs. Robert W. Duke
(Nancy Brown Duke '55)

JOHN W. ERICKSON
Joan Foster McKeown '64

JULIE KATHRYN FLYNN '80
Janet Schultz Thompson '80

JACK SMYSER FOLLINE
Palmer Davison Ball '84
Mr. and Mrs. Cobb Bell
Frances H. LaBorde '58

Haynsworth, Sinkler, Boyd, PA
Susan Jackson Davenport '62
Ann Ward Houck '58
Gail Rawls Jeter '77
Mr. and Mrs. Porter Kinard
(Amelia Speth Kinard '67)
Rebecca Laffitte
Alice Fuller Littlejohn '88
Mr. and Mrs. Paul K. Piho
Ann P. Powell
Dr. and Mrs. March Seabrook
(Anne Richardson Seabrook '82)
Mr. and Mrs. T. S. Smith
(Martha Bell Smith '81)
Mr. and Mrs. Roy N. Taylor
(Laura McLean Taylor '53)
Mr. and Mrs. T. A. Wall
(Mary Bell Wall '84)
Mr. and Mrs. Bud Wilkerson
(Nancy Hayes Wilkerson '58)
Margaret Dick Wyman '57

CHARLOTTE CAUSEY FRIERSON '51
Dr. Henry F. Frierson
Linda Frierson Perrow '81

LOUISE WARREN FULLER '52
Alice Fuller Littlejohn '88

CAROLYN W. AND SIDNEY C. FULMER, JR.
Carolyn Fulmer Alexander '57

BRENDA HUBBARD FURR '67
Brooks Sanders Hamilton '67
Mary Lentz Glascock '67
Frances A. McDowell '67

NANCY HART GILLIAM '38
Mr. and Mrs. Edward L. Roberson III
(Susan Davis Roberson '73)

**MARTHA ELIZABETH ANDERSON
GOLDSMITH '36**
Mrs. Harriet Messer Goldsmith '69

**JANE STONE CLEVELAND
GORDEN '49**
Paula Wagner Gay '77

ATHALIA SALMON GREEN '62
Mr. and Mrs. Bill Carpenter
(Cantey Brabham Carpenter '62)

PRIMROSE NETTLES GREEN '62
Mr. and Mrs. Bill Carpenter
(Cantey Brabham Carpenter '62)

CONSTANCE BRATTON GRINE '72
Gray Brantley Little '72

STELLA TAN GURUNG
Meenakshi Gurung '09

MELANIE D. HALL '98
Dori D. Helms '98

TAPP LATTA HANCOCK '57
Jane Powell Crowder '57
Mary Lib Spillars Hamilton '57
Dr. and Mrs. Frank J. Wyman
(Margaret Dick Wyman '57)

FRANCES DAVIS HASLETT '41
Mary Curlee Arnett '71
Lucy Davis Coleman '48
Robert Timmons Daniel '71
Lucy Haslett Evans '71
Martha Haslett Ladd '78
Mr. and Mrs. H. Thomas McIntosh
(Margaret Johnson McIntosh '69)

BUENA WINECOFF HATLEY
Mary Hill Hartley Lane '65

EADDY WILLIAMS HAYES
Mr. and Mrs. Paul H. Lehner
(Sarah Ellis Lehner '74)

TAMMY MCWHITE HEATH '54
Elizabeth Massey Gage '54

JANET SCOTT HEINBOKEL '45
Mr. Frederick H. Heinbokel

ELIZABETH TURNER HERBERT '22
Elodie Hale Craig '74

NELLIE CASH HICKS 1911
Liz Johnson Fergus '67

LINDSEY SHAW HUNNICUTT
Allison Hunnicutt Hauser '86

ALICE WILSON HUNTLEY '54
Daisy Howard Gatewood '54

ELIZABETH CROUCH INGLETT
Carol Inglett Evans '76

ELEANOR BROWN JOERDEN '58
Ann Ward Houck '58

ALBERT JOHNSON
Virginia L. Pruitt '79

NELL HICKS JOHNSON '35
Liz Johnson Fergus '67

CAROLE JUANITA JONES '60
Sara Jordan Floyd '60

JUDY VOSS JONES
Margaret Strang '63

DAVID M KELLY
Lanie Kelly Trout '71

SARAH FRANCES FOSTER KELLY
Lanie Kelly Trout '71

ANNA LOUISE KLEPCZYNSKI '00
Chris Freedman Wells '00

LIBBY BLACKWELL KOVAL '74
Mr. and Mrs. Charles W. Dorman
(Amanda Horton Dorman '74)

THOMAS HILDITCH LANDESS
Laurie Rothrock Dick '62
Ellen Bryant Voigt '64

ALIA ROSS LAWSON
Harriet I. Hair '62
Lillian Utsey Harder '67

JOE ANN LEVER
Wendi White Arms '93
Virginia Ogletree Ashmore '42
Palmer Davison Ball '84
Mr. Mayo Mac Boggs and
Dr. Ansley Hassell Boggs '77
Marguerite E. Callahan '77
Mr. and Mrs. Sonny Cannon
(Marjorie Coddington Cannon '62)
Claudia Barton Coleman '82
Laura Massey Crawford '01
Mary Tuller Davis '69
Cole Law Firm
Rebekah Bolton Gillespie '03
Mr. and Mrs. Roger A.F.
Habisreutinger
Charlotte Boone Halicioglu '64
Mirko M. Hall
Captain Jane Murray Hartley '68
Jennifer Schwartz Henderson '97
Sue Pierce Holland '70
Mr. and Mrs. Russell Jeter
(Gail Rawls Jeter '77)
Adelaide Capers Johnson '69
Mr. and Mrs. George Dean
Johnson, Jr.
(Susan Phifer Johnson '65)
Dr. Kirsten Suzanne Kerr '94
Brenda Garner Lancaster '02
Dr. Lillian Romine Meacham '78
Elizabeth Jackman Noyes '69
Suzanne Coleman Pettay '72
Robbie Mosley Richards '92
Clara Irwin Traver '67
Susanne C. Wean '71 and
R. John Wean III
Malinda K. Willard '64
Polly Hill Woodham '51
LaVonda Frierson Woods '97
Susan Early Via '79
Elizabeth Fair York
Sallie Legere York '02

**JANE LEIGHTON RICHARDS
LISTON '30**
Martha Paxton Beale '49



“Education is the means to level the playing field and help children rise above their impoverished circumstances.”

Phyllis Horne Crain '80 MEd (1957–2012)

There are thousands of educators who hold a Converse College graduate degree and, conceivably, twice as many stories about their remarkable contributions. This is the story about one such teacher, who made it her mission to give children, without a chance, every hope in the world.

In 1980, Phyllis Horne Crain received a Master of Education degree from Converse. She earned a doctorate from the University of South Carolina and quickly went on to become the first female superintendent of schools in North Carolina's Avery County. In that role, she constructed two new schools, raised funds and completed design work for a third. She reduced by 50 percent the number of children reading below grade level through innovative tutorial programs and doubled the number of graduating seniors entering college. In a career move that would envelop every aspect of her life, Dr. Crain and her family moved to Crossnore, NC in 1999, where she assumed the position of associate director, and later executive director of the Crossnore School.

What she found in that tiny pocket of the world were some of the poorest children in the country. Determined to do for them what others had not, Phyllis Crain and her colleagues paved the way for Crossnore Academy, a residential school for students in grades K-12. Despite an 11-year battle with breast cancer, Phyllis Crain was an indomitable cheerleader for the children of Crossnore. Beyond raising money for bricks and mortar for classrooms and cottages to house the students, Dr. Crain was intent on growing the school's particular blend of healing care and experiential learning. She made sure the kids of Crossnore had bikes and bird feeders, dogs and cats—the simple things that mean everything in growing up. “Her guiding principle,” said her husband Keith, “was that education was the means to level the playing field and help children rise above their impoverished circumstances.”

Phyllis Horne Crain's personal memoir, *I Choose Life*, was published this fall by Crossnore.

HELEN (HOLLY) JOHNSTON RICHARDSON '78

Mr. and Mrs. Coy Johnston
Mr. Philip E. Richardson, Jr.

ELIZA BARRON MACAULAY '29

Eliza Macaulay Carney '59

DR. NATHANIEL F. MAGRUDER

Dawn Barnard '94
Mr. Mayo Mac Boggs and
Dr. Ansley Hassell Boggs '77
Mr. and Mrs. James V. Burchfield
Valerie A. Burnie
Martha Tootle Cain
Margaret H. Cannon
Book Review Club
Wednesday Night Bridge Club
Alicia A. Crew
Roberta Timmons Daniel '71
Janis I. Dengler
Dr. and Mrs. Joe P. Dunn
(Jeanette Ruth Dunn '99)
Colleen M. Duris
Mr. and Mrs. Lawrence O.
Goldstein
(Janice R. Goldstein '74)
Mr. and Mrs. William L. Gunn
Mirko M. Hall
James G. Harrison, Jr.
Janie B. Hicks
Albert C. Hubbard
Dr. and Mrs. Woodrow H. Hughes, Jr.
Margaret F. Hutson
Mr. and Mrs. George Dean
Johnson, Jr.
(Susan Phifer Johnson '65)

Mr. and Mrs. Charles Jones
Dr. William J. Kimball
Betty Blanton Lewis '72
Glenna R. Luca
Dr. and Mrs. Thomas F. McDaniel
Anna Dean Millikan '02
Dr. Neal Elizabeth Millikan '01
Bessie Papadis '72
Anne Trenning Sasser '87
Dr. Alfred O. Schmitz
Dr. and Mrs. Talmage B. Skinner
Altrusa Internaional, Inc. of
Spartanburg
John M. Theilmann
Catherine Hawkins Thompson '88
Donald K. Stephens
(Nan B. Foster Duke '75)
Linda G. Walker
Mr. and Mrs. Edward L. Weldon
Mr. and Mrs. Donald Bruce Wildman
(Alanna Ivey Wildman '71)
Reeves S. Wilkes '64

DAVID AND MARGARET MARRASH

Susan Marrash-Minnerly '73

LOUISE SMITH MCCOLLUM '27

Penny South Kosztolnyik '61

GEORGE MCCORMACK

Ruth McCormack McDaniel '87

JOHN RICHARDS MCCRAE

Ross A. Magoulas '56

MARY HIPP WILSON MCCUTCHEM '37

Polly Hill Woodham '51

ROGER A. MCDUFFIE

Margaret McDuffie

PATSIE DAVIS MCLEOD '35

Mr. and Mrs. H. Thomas McIntosh
(Margaret Johnson
McIntosh '69)

KATHERINE WILLIS MEDLOCK '73

K. Nicole Medlock Scott '99

ROSA LEE MILLER

Joyce Reynolds Babcock
Reed and Suzanne Brown Family
Dr. William M. Edwards
Ruth T. Ingle
Mr. and Mrs. Myers Hollis
Parsec Financial Management, Inc
Sharon G. Pichai

ROY T. MITCHELL

Lynn Hicks Mitchell '70

JOHN T. MOORE

Laura Kate Garner '95

NETTIE DIEST MOORE 1900

Craig Harris McDaniel '65

DR. SANFORD H. NEWELL

Sally Brown Stewart '72

RENEA ANDREA PARKER '99

Rebecca Roland Hyleman '99
Sharaiah Choice Watson '99

MR. AND MRS. JOHN PATTON

Mr. and Mrs. Wesley P. Wright

RADIANA HAROLD PAZMOR

Betty Styron Guffin '48
Margaret Maxwell Smith '54

NANCY CARROLL PETERSON '52

Elizabeth Hargett Smith '52

GRACE MARTIN PHILLIPS '44

Harry R. Phillips, Jr.

CAROLINE MAJOR PICKENS '34

Suzanne Pickens Alexander '62

LAURA NANCE MCCAUGHRIN PICKENS '35

Sandy Pickens Wagner '64

SUE BAXTER PICONE '57

Harriet Mahaffey Butler '57

RACHEL B. PIERCE

Jane Briggs Rankin '63

ELEANOR THOMSON ROY '36

Linda Frank Johnson '65

BRANDI SARRATT-COBB '02

Kerri Lynn Olson '02

ANNE MORSE SHEARER '66

Cheryl Pockrus Blackmon '66

FRANCES BYRD SMITH '61

Laura Simpkins Stock '61

MAUDELINE HOLLIDAY SMYTHE '23

Clayton Lippincott Harvey '77
Anne Crispin Lippincott '76
Anne Smythe Lippincott '51

MARGARET SMITH SOUTH '37

Penny South Kosztolnyik '61

DR. GEORGE M. SPEED

Mr. Mayo Mac Boggs and
Dr. Ansley Hassell Boggs '77

AMELIA ALBERGOTTI SPETH '33

Mr. and Mrs. Porter Kinard
(Amelia Speth Kinard '67)

MINNIE STAFFORD

Minnie S. Goodwin '69

GAIL MCDUFFIE STEBBINS '75

Louise Vaughn Vallotton '66

VAUGHN HODNETT THOMAS '63

Novie McCree Greene '62

RICHARD TAYLOR TOWNSEND

Mr. and Mrs. Bill Carpenter
(Cantey Brabham Carpenter '62)

MINDY ANN TRAPHAGAN '87

Jane Harlan Beson '87
Rebecca Seeger Eller '87

DR. JAMES TURNER

Adelaide Capers Johnson '69

MARGARET ALLEN TYSON '76

Mr. and Mrs. Neal W. Dickert
(Floride Clarkson Dickert '69)
Mr. and Mrs. Doug Engler
(Elizabeth M. Engler '75)
Mr. and Mrs. William M. Force, Jr.
Mr. and Mrs. John W. Gibson
(Martha Mason Gibson '75)
Grace Bailey Heck '76
Georgianna Thomas Malchow '81
Robert E. McCrary, Jr.

Connie Hurden Munoz '80
Mr. and Mrs. H. M. Osteen, Jr.
Mary B. Robertson
Alice H. Sanders '61

LEIGH ANNE WARD '97

Dawne Copeland Bendig '97
Shannon Gosnell Bishop '97
Nina Couch Cardona '97
Eleanor Smoak Connelly '97
Donna Pallassino Evans '97
Amanda Messer Hartman '97
Jennifer Schwartz Henderson '97
Lisa Spratlin Hoffmann '97
Stephanie Shelley Lake '97
Perrin Spigener Marchionne '97
Susan M. Miskelly '97
Caroline Taylor Player '97
Jennifer Coggins Reese '97
Hadley Buchanan Rowland '97
Merri Christy Harmon Tolar '97
Dr. and Mrs. E. Frazier Ward III

JEAN SACKETT WARREN '48

Elise Warren '75

DONNA WHEELER

Dr. Marsha C. Black '75

HARRIET BULL WILDER '43

Floride Owens McKoy '69

ELBERT (BILLIE) GOODWIN WILLIAMS '19

The Rev. Catherine Williams Swann
'67

CAROLYN STEPHANIE WORTH '79

Karen Elizabeth Worth '77

MR. AND MRS. HARLAN WRIGHT

Mr. and Mrs. Wesley P. Wright
(Cecelia Jane Wright '90)

Honor and Memorial gifts include gifts received between July 1, 2011–June 30, 2012, the College's fiscal year. In preparing this document, every effort has been made to ensure accuracy and completeness. If a mistake was made in omission or misidentification of a donor or tribute name, we sincerely apologize. Please report any corrections to the Office of Institutional Advancement at 864.577.2045 or sharon.smith@converse.edu.

Thank you



flickr

See more photos from the concert, including
B.o.B. performing in his Converse t-shirt!
converse.edu/gallery/bob-spring-concert

WELIC



TIME TO CONVERSE

PREZ

• to •

PREZ

Q & A



**Alumnae
Association**

**President Elisabeth
Kinney McNiel '89
sits down with
Converse
President
Betsy Fleming**



Betsy, what one thing do you find surprises alumnae most about Converse today?

That's a great question, Elisabeth. I would be hard pressed to say that there's just one thing that surprises Converse alumnae about their alma mater today. It's more akin to observations that are tied to two things: 1) the aspirations, accomplishments and activated voices of our current students; and 2) the beauty and evolution of the Converse campus.

At such special events that draw alumnae back to campus, they seem to find boldness and inspiration in this current generation of Converse students. There's certainly widespread recognition that the face of the College is changing, that every decade brings new fashions, trends and diversity. But, more importantly, our alumnae are blown away by the Converse students of today—what they want to do in the world and how they plan to make those dreams happen. They also see that those students love Converse for her sisterhood and the relationships with faculty, staff and peers—the same reasons why the alumnae so cherish *their* Converse.

As for the beauty of the campus, there has been very conscientious attention paid to enhancing this gorgeous physical plant. I welcome the “oohs and aahs” about our new apartment housing The Heath, the technology-savvy renovations of Kuhn Hall, and the plans for renewing Pell and Dexter Halls and for building the new Marsha H. Gibbs Field House. As Board Chair Betsy Crane Griffith '72 often says, “if you haven't been here in a while, you need to come home to Converse.”

Alumnae hear lots of buzz about online learning at colleges across the nation and about Converse's new online degree programs. How does this changing landscape impact Converse?

The online platform is truly revolutionizing teaching and learning. It provides entrée to anyone with a computer, internet access and the strong drive to learn. Converse wants to be a part of this transformation.

We've been working in partnership with SC-ETV for a number of years now to provide online professional development programs for educators. So, our experience in this “new” modality enabled us to develop and launch first-rate online



graduate degree programs in February 2012. These have been enthusiastically welcomed by professionals in the field. In addition, since summer 2010 we have been offering summer online undergraduate courses in the liberal arts as a means of introducing faculty to the online environment and fine-tuning pedagogy. Ultimately, Converse is distinguished by the personalized education and mentoring provided to both undergraduate and graduate students—and our online students indicate that this distinction has been striking in their experiences. These strategies lead to strong outcomes. We will always remain committed to those approaches, thus to traditional classroom teaching in addition to developing a selection of learning opportunities through other modes of delivery.

We are expanding our efforts, developing additional courses and degree programs to further meet the needs of our post-traditional (adult) students and to ensure our undergraduate

“We are *now* at a point where we must educate our children in what no one knew yesterday, and prepare our schools for what no one knows yet.”

Margaret Mead

students know how to maximize technology in their research and learning. I expect that a growing number of adults interested in higher education degrees, including alumni, their friends and associates, key constituents and members of the Spartanburg community will look to Converse for online learning opportunities. We must: for as Margaret Mead noted “We are now at a point where we must educate our children in what no one knew yesterday, and prepare our schools for what no one knows yet.”

What do you do for fun and relaxation?

Hmmm, I have lots of interests—most are about satiating my curiosity and love of learning! I read, power walk, practice yoga and bike. I enjoy music and art of all kinds and seek out museums whenever I travel. My siblings are all foodies. So

I've picked up a passion for good food and cool restaurants. My schedule for Converse keeps me running, but when I do vacation—it usually involves exploration, exercise and sleep! Cycling, scuba diving, snow skiing and hanging out at the beach with my family are my most preferred activities.

If you could invite one WOMAN in history to join CONVERSE students for dinner in Gee, who would it be?

Martha Graham! My mother took me to see the Martha Graham Dance Company when I was very young. That performance is vividly etched in my memory. It was the first time I saw modern dance and relished the dancer's grace and fluidity, strength and vulnerability. As I mature, the more I appreciate Martha Graham's story—how her passion for a new kind of dance transformed the role of art in the United States.



Guess who's coming to dinner . . .

But, do I have to limit my answer to just one woman?

You're the President; you can invite as many women to dinner as you like!

Well then, in light of this year's SGA theme *Embrace the Revolution* and my own appreciation for bold, creative, courageous trailblazers, I would also ask Helen

Frankenthaler for boundary-breaking abstract art-making in a field dominated by men. I'd invite Elizabeth I. She inherited a mess left by the void of her father's reign and transformed England into a global power. How about Marian Anderson, whose bronze likeness stands outside of Twichell Auditorium. She had such a stunning voice and used her talent to advance appreciation for African American performers and advocate for civil rights. I would add, Gloria Steinem, for her ability to amplify action around social justice; Hillary Clinton, as a product of a women's college and the consummate champion for women worldwide; Martina Navratilova, for her spirit of determination; and Sandra Day O'Conner for her courage in being the first female on our nation's highest court. After reading the briefing about Executive Chef Doug Allen on page 8, I'm sure our conversation *and* our meal would be amazing!

Betsy, we've heard you are a collector of fine shoes. Which pair of your shoes has gotten the most attention from Converse students?

Yes, I am a shoe junkie! I'm not sure that there is one pair of shoes that the students like best, but they do love to take notice. And, I enjoy that. However, I did NOT wear my best shoes to run in the High-Heel Hundred race!

President Fleming's dream dinner in Gee would include (clockwise from top) Martha Graham, Helen Frankenthaler, Elizabeth I, Marian Anderson, Gloria Steinem, Hillary Clinton, Martina Navratilova and Sandra Day O'Conner.

What do you see as Converse's greatest challenge in evolving to meet the needs of today's students?

I see three:


- 1) access and affordability for those students who would most benefit from a Converse education
- 2) exceptional outcomes, including the continuous improvement of our already-strong 4-year graduation rates as well as job and graduate school placements
- 3) real relevance in the face of the dramatic changes that are taking place in higher education and the ever-changing demands of students, professions and workplaces.

The kind of institution that will thrive in this world of global connectivity must be nimble and responsive to weather the volatility in the marketplace. Fortunately, Converse has a long and proud history of innovation and adaptability. We must now adopt an entrepreneurial spirit to actively enhance and adjust the best of Converse for our success in the future.

To submit questions for the next issue's Q and A between President Fleming and the new Alumnae Association President, Amy Tibbals Morales '86, please email Carrie Coleman, Director of Alumnae and Donor Relations at carrie.coleman@converse.edu.

Going the Distance

by Sally Jeter Hammond '81



“Converse women are educated in such a manner that they are able to go out and change the world.”

Elisabeth Kinney McNeil '89 is a doer with a driving ambition to make inroads as the president of the Converse College Alumnae Association. If you ask her family about her two year tenure on the job, they'll tell you that she has been doing the driving alright, and burning up the roads between Bennettsville and Spartanburg!

Hardly daunted by the three-hour trek (each way), Elisabeth's been making the trip between the two towns for more than 20 years, so coming back to campus, she says, is coming home. A 1989 Converse alumna, who was born and raised in Bennettsville, SC, Elisabeth comes from a Wofford-Converse family. "All the males in my father's family attended Wofford, and all of the female members, dating back to 1896, attended Converse. Because it was such a transformative experience for my relatives, I was sure it would be for me, as well."

Now at the helm of the Kinney family business, Elisabeth is the comptroller for the *Marlboro Herald-Advocate*, the local newspaper in Bennettsville since 1931. "I majored in Business at Converse, prepared to go home and work alongside my father. Converse confirmed my leadership skills, and provided me with tremendous opportunities to serve. It was at Converse that I was able to fully identify who I was and who I wanted to be."

Elisabeth McNeil now sees herself as a walking advocate for her alma mater and a working ambassador for its future. "As Converse approaches its 125th anniversary in 2014, it's important to me that our alumnae are actively engaged in this enterprise in such a way that we maintain the Founder's Ideal for another 125 years. Converse women are educated in such a manner that they are able to go out and change the world. It's amazing to me that, on one city block, we do that."

"We've done a good bit of work to align the mission of the Alumnae Board with the mission of the College," says Elisabeth. "We've promoted alumnae networking and greater engagement with our graduates." The President and the Board of Trustees have responded to the growing energy and excitement among alumnae. Elisabeth notes that keeping up the momentum is critical. "Converse is doing great things and her graduates need to be a part of it all. So many people look at Converse and think it's a small college. We're not small at all when you consider the success of Converse women, at all different levels, across the nation and around the world."

In April of 2013, Elisabeth will pass the President's gavel to Amy Tibbals Morales '86.

Sally Jeter Hammond '81 is Vice President for Enrollment and Marketing.

2013 Alumnae Award Recipients

The Mae Elizabeth Kilgo **Spirit of Converse Award** is given to an alumna who, by her constant and loyal service to Converse College, has kept the College visible to other alumnae and her community.



PATRICIA HEMINGWAY
Campbell '58

The **Career Achievement Award** recognizes the alumna who has dedicated herself to excellence in her profession and has distinguished herself by notable achievements credited over a continual period of time.



ELISABETH MARCHANT
'68

The **Community Service Award** recognizes the alumna who displays the qualities of a vibrant citizen through her active involvement in her community, church, and state.



JANE BRYANT
Block '63

The **Career Achievement in Music Award** recognizes the alumna who has dedicated herself to excellence in her profession in music and notable achievements credited over a continual period of time.



HATTIE LIDDON
Andersen '63

The **Distinguished Alumna Award** is given to those alumnae who merit special recognition for their loyalty to Converse, outstanding achievement in their fields, and service to their communities.



BETTY REYNOLDS
Oare '63

The **Young Alumna Award** is given to an alumna (within 15 years of graduation) who embodies the qualities of character and achievement that Converse alumnae hold as their ideal.



VALERIE BROCK
Naglich '03

The **Star Award** is given in recognition of an alumna who actively and admirably serves Converse in the area of student recruitment.



JOY ADAMS
Betha '93

The **Converse 100 Award**, first presented during the College's Centennial Celebration, is given to an alumna who clearly embodies the qualities of character and achievement that Converse alumnae hold as their ideal.



LESLIE HALE
Weed '83

2013–2014

Alumnae Association Board Slate

PRESIDENT

AMY TIBBALS Morales '86, Jacksonville, FL

PAST PRESIDENT

ELISABETH KINNEY McNeil '89, Bennettsville, SC

NOMINATING COMMITTEE CHAIR

DEANNA L. FULTS '00, Knoxville, TN

RECOGNITION COMMITTEE CHAIR

PAMELA M. WOODS '85, Columbia, SC

CARRE CHAIR (Converse Alumnae Recruitment and Retention Effort)

HAIDEE CLARK Stith '76, Lexington, SC

TAPP CHAIR (Touching Alumnae Peer-to-Peer)

EMILY JONES Rushing '73, Birmingham, AL

ENGAGEMENT COMMITTEE CHAIR

KAREN WATERS Thomas '84, Greer, SC

SECRETARY

LAURA BINGHAM Ritch '75, Hartselle, AL

PLANNED GIVING REPRESENTATIVE

AUSTIN FAULK Hardison '95, Charlotte, NC

MUSIC SCHOOL REPRESENTATIVE

JOAN FOSTER McKeown '64, Roebuck, SC

GOLDEN CLUB REPRESENTATIVES

MARY LIB SPILLERS Hamilton '57, Spartanburg, SC

CLAUDIA JOWITT McCollough '62,
North Myrtle Beach, SC

YOUNG ALUMNAE REPRESENTATIVE

NICOLE DUMOUCHEL Watford '10, Lexington, SC

CONVERSE II REPRESENTATIVES

MELISSA PARRISH Pittman '00, Tryon, NC

NAN NEUMEYER Dempsey '86, Spartanburg, SC

GRADUATE DEGREE REPRESENTATIVE

SHANNON GOSNELL Bishop '97, '00 MEd, Spartanburg, SC

2010'S DECADE REPRESENTATIVES

AMANDA M. RIPLEY '11, Springfield, VA

CARRIE J. SAXON '10, Spartanburg, SC

ELIZABETH M. DAVIS '12, Cheraw, SC

2000'S DECADE REPRESENTATIVES

SARAH W. MARION '08, Chester, SC

LAURA MASSEY Crawford '01, Waldorf, MD

NORA NASSRI '08, Columbia, SC

ELIZABETH L. WALKER '06, Greenville, SC

1990'S DECADE REPRESENTATIVES

MOLLY L. FORTUNE '93, Atlanta, GA

JENNIFER COVINGTON McElveen '94, Mt. Pleasant, SC

HEATHER K. ELDRIDGE '97, Sumter, SC

ELIZABETH A. BROWN '91, Savannah, GA

1980'S DECADE REPRESENTATIVES

SUSAN SECORD Marion '80, Chester, SC

JULIE D. STAGGS '86, Atlanta, GA

CATHY MCALLISTER Watson '86, Columbia, SC

PRIMROSE GREEN Fisher '88, Augusta, GA

1970'S DECADE REPRESENTATIVES

BECKY AIRHEART '76, Columbia, SC

PAULA WAGNER Gay '77, Houston, TX

VICKY VANN Meyer '71, Aiken, SC

ELIZABETH YEILDING Ezell '79, Birmingham, AL

1960'S DECADE REPRESENTATIVES

CAROLINE WATTS Morris '64, Greenville, SC

BETTY "BOOPIE" POOLE Rose '63, Raleigh, NC

ELIZABETH "LIZ" HARKINS Biosca '64, Johnson City, TN

NILLA "DICKE" TREDWAY Sloop '67, Sanford, NC

1950'S DECADE REPRESENTATIVES

ANNE ARGO Sanders '59, Spartanburg, SC

AGNES WALLACE Williams '57, Greenville, SC

1940'S DECADE REPRESENTATIVE

ELEANOR "SKIPPY" HERBERT Hale '48, Jacksonville, FL

AT-LARGE MEMBERS

HELEN E. MITCHELL '86, Spartanburg, SC

SUSANNA KNIGHT Roberts '00, Atlanta, GA

DEBBIE CURRIN Connor '90, Conway, SC

LUCIA CLEVELAND Johnson '67, Cedartown, GA

EMILY KERR Stay '63, Novelty, OH

Planning a Gift to Converse

by Dianne Ansley

Bequest

One of the simplest—and most overlooked—ways to make sure your legacy to Converse lives on after your death is a bequest to the College, typically made through a will or trust. You can change the provisions in your will or revocable trust, including how much to donate and to whom, any time before your death, giving you maximum flexibility. Mary Lib Spillers Hamilton '57 is making a bequest to her alma mater in her will. “My four years at Converse—the education I received, the friends I made and the fun I had—meant so much to me that I wanted to give back so that other young women could have as good of an association with the College as I have had.”



**Mary Lib Spillers
Hamilton '57**

Charitable lead trust

Commander Edwin Malloy, Jr. (1917-2005) served on Converse College's planned giving advisory committee during the 1970s. His family ties to Converse include his mother, Margaret Adger Manning Malloy, Class of 1907, and his grandfather, William Sinkler Manning, one of Converse College's founders.



Edwin Malloy, Jr.

Commander Malloy provided for Converse and surviving family members through a testamentary charitable lead annuity trust. During the fifteen-year term of the trust, the College receives a fixed percentage of the trust's initial value. At the end of fifteen years, the remaining assets, including any appreciation in the assets, pass to designated heirs. Because the heirs will not receive their gift for fifteen years, the taxable value of that gift is reduced in his estate and the already reduced taxable value of the gift is further offset by a deduction for the present value of the payments being made to the College. In honor of the Malloy and Manning families' connections to Converse, the distributions received by the College from the trust are added to the *Malloy Family Endowed Scholarship* to support generations of Converse students.

Retirement-plan assets

When Dr. Jeff Willis, Andrew Helmus Distinguished Professor Emeritus, was approaching retirement from the classroom and considering beneficiaries of his estate, Converse College was high on his list of philanthropic interests. “I have been at Converse for a major portion of my life, enjoying teaching and my association with students, alumnae and faculty colleagues. I have an enormous loyalty to and affection for Converse and want to help attract students of the highest academic standards to the College.”



Jeffrey R. Willis

Dr. Willis chose to name Converse a beneficiary of his retirement-plan assets. Neither he nor his estate will owe income taxes on the amount designated for Converse. Because the College does not pay income taxes on contributions, the distribution will avoid being taxed as income. The full amount of the distribution will be used to establish the *Jeffrey R. Willis Endowed Scholarship*.

Life insurance

President Betsy Fleming's love of Converse began long before she became the College's ninth president in 2005. She spent many hours dancing in Montgomery and Twichell as a student of our pre-college program. Her mother, Lib Burnett Fleming '65, also instilled in President Fleming appreciation for the broad community benefit of the education and advancement of women and particularly the role that her alma mater played in providing women such access. Believing in the future of Converse, President Fleming designated the College as a life insurance beneficiary. “It was incredibly easy to make such a gift of lasting benefit,” she says. “I signed the beneficiary designation form naming Converse College as beneficiary and filed the signed form with the insurance company. At my death, Converse will submit a claim with the insurance company and receive the proceeds of the policy.”



**President Betsy
Fleming**

For more information on making a planned gift, contact Dianne Ansley, Director of Gift Planning at dianne.ansley@converse.edu or 864.577.2088.

Your Class Notes



Send your news to the Class Representative(s) listed with your class. If your class has no representative listed, send news to:

Office of Alumnae and Donor Relations
580 East Main Street
Spartanburg, SC, 29302
 email nancy.gage@converse.edu



Or, visit us on Facebook—
Converse College Alumnae Association

The class notes included in this issue were submitted to the Office of Alumnae and Donor Relations by January 4, 2013.

Class Representatives are volunteers elected by their class and are responsible for the accuracy of their class notes.

Many classes have established class year Facebook pages. Look for the Facebook icon by your class year.

1930

IN MEMORIAM

LALLAGE BLANTON Jones,
 July 28, 2012

1931

IN MEMORIAM

HARRIET BREEDEN Fairfield,
 August 15, 2011

1934

IN MEMORIAM

ELIZABETH BURKE Jennings,
 October 9, 2012
EVERLYN ADAMS Corell,
 December 22, 2012

1935

IN MEMORIAM

BESSIE MCCRARY Bowie,
 March 23, 2012
ALICE FRANCES "DAUGHTY"
MCKELLAR Lawrence Granade,
 January 21, 2013

1936

IN MEMORIAM

BLANCHE CULVERN Sullivan,
 June 29, 2012
FRANCES FIELDS Holliday,
 July 15, 2012
ALEINE RUDISILL Martin,
 June 25, 2012

SYMPATHY

Louise LANHAM Spell '37,
 August 2, 2012, sister of
MARGARET M. LANHAM

1937

IN MEMORIAM

SUSAN GIBBES Woodward
Robinson, March 17, 2012
KATHERINE "BECKY"
GWATHMEY Swann,
 November 19, 2012
LOUISE JORDAN Earle,
 June 21, 2012
LOUISA LANHAM Spell,
 August 2, 2012
MARY HIPP WILLSON McCutchen,
 May 7, 2012

1938

IN MEMORIAM

MILDRED ELLIOTT Berl,
 January 5, 2012
BERTHA EZELL McArthur,
 May 14, 2010
NANCY HART Gilliam,
 April 30, 2012
LOUISA LYLES Searson,
 August 20, 2012
KATRINA MCCALL Flowers,
 March 10, 2012
ROSALIE RICHARDSON Johnson,
 September 22, 2011

1939

IN MEMORIAM

FRANCES BURTON Horner
Powers, July 31, 2012
ADELA HOLMES Stony,
 February 11, 2012
ETHEL MCLAURIN Rogers,
 September 13, 2011

SYMPATHY

Louise Jordan Earle '37, June 21,
 2012, sister of **SALLY JORDAN**
Meriwether

1940

IN MEMORIAM

FLORENCE ARMOUR Claytor,
 December 13, 2012
GENE BOYLE Brading,
 April 6, 2012
DOROTHY HOLLAND Snyder,
 October 17, 2012
JEAN CECIL McAdams,
 August 1, 2012
JEANNETTE PROPST Ellison,
 July 18, 2012

1941

IN MEMORIAM

GERTRUDE BULL Terrell,
 December 7, 2012
MARGARET BURGWIN Cooley,
 December 27, 2012
BERTHE DEAN CARTER Howell,
 April 2012
MARIE OSTEEN Robinson,
 March 14, 2012
JEAN SIMPSON Sharp,
 July 5, 2012

1942

IN MEMORIAM

ELLEN BELL Lane, April 8, 2012
LIL BOULWARE Jordan,
 June 5, 2012
MARGARET CASTLEMAN Manley,
 December 6, 2012
ANNE CRADDOCK Hammerstrom,
 April 4, 2012
FRANCES EDWARDS Hughes,
 May 28, 2012
FLORIDE MCBEE Barksdale,
 September 1, 2012
ELIZABETH NEWTON Lott,
 September 8, 2012
PATTY TRIPP Planck,
 October 27, 2012

1943

CLASS REPRESENTATIVE

Barbara Brown Lee
706 N Summit Crest Court
Spartanburg, SC 29307-1546
864.582.4668

IN MEMORIAM

MARTHA EFIRD Edwards,
 September 10, 2012
DOROTHY FRANCE Newcomer,
 December 8, 2012
ORA GIBSON League,
 February 29, 2012
ELEANOR TOOLE Going,
 January 18, 2013
SAMMY WORLEY Longino,
 August 4, 2012

SYMPATHY

Mary Ellen Suitt, January 19,
 2013, sister of **SARAH SUITT**
Miller

1944

IN MEMORIAM

NANCY CROSSWELL Houser,
 November 8, 2010
BETTY JANE EVERETT Moore,
 October 26, 2012
LUCILLE HOLLAND Latimer,
 March 19, 2011
VIRGINIA MANNING Moses,
 June 7, 2012
MARY KENT SEIGNIOUS Kelley
Freeman, August 26, 2012

SYMPATHY

Myers Hampton Hicks, November
 2012, husband of **EDITH**
MCEACHERN Hicks

1945

IN MEMORIAM

MARGARET FULTON Walker,
October 4, 2012
MADGE GRAYDON Major,
September 30, 2012
FRANCES MARSHALL Christian,
July 29, 2011

SYMPATHY

Louisa Lyles Searson '38, August
20, 2012, sister of **SUSANNE
LYLES** Reaves

1946

CLASS REPRESENTATIVE

Mary Helen Garrison Dalton
3064 Ridgewood Road NW
Atlanta, GA 30327-1937
404.355.0434

IN MEMORIAM

ELIZABETH ANDERSON Scudder,
June 19, 2012
BETTY MURPHY Gudmundson,
December 12, 2012

1947

CLASS REPRESENTATIVE

Mary Young Cousar
4615 Arlon Lane
Jacksonville, FL 32210-8127
904.387.1793

IN MEMORIAM

DOROTHY COX Holmes,
August 28, 2012
MARY NETTLES Lentz,
January 10, 2013
ELINOR RAGSDALE Wylie,
October 5, 2012

SYMPATHY

J. Givens Young, March 26, 2012,
brother of **MARY YOUNG
Cousar**

Frank A. Lyles, November 21,
2012, husband of **FLORINE
FRANCE** Lyles

1948

65th Reunion:
April 12-13, 2013

CLASS REPRESENTATIVE

Eleanor "Skippy" Herbert Hale
5171 Yacht Club Road
Jacksonville, FL 32210-8323
904.387.9592
Skippyhale@gmail.com

IN MEMORIAM

HELEN BLOUNT Collins,
September 20, 2012
ELIZABETH CLEVELAND Watson,
July 22, 2012
JOHNNIE DOYLE Hale,
November 22, 2012
ANN MCCANDLISH Carroll,
May 28, 2012
JOAN SCHLAUDT Wheeler,
September 14, 2012
ANNE SHEPHERD McKee,
January 24, 2012

SYMPATHY

Robert Glenmore Sharp, January
26, 2013, husband of **MAY
BYNUM** Sharp
Rufus Roberts Hambright,
February 22, 2012, husband of
JEAN LOVE Hambright
SYLVIA MAKEPEACE Craven '51,
June 7, 2012, sister of **NANCY
MAKEPEACE** Paty

Thanks to all of you who heeded
Skippy's letter and phone calls
last spring/summer for the WE
ARE ONE annual fund campaign.

SKIPPY HERBERT Hale
celebrated her 85th by taking
her daughters, Elodie Hale Craig
'74, Leslie Hale Weed '83 and
her sister, Connie Herbert Vinson
'60, to Costa Rica. **ERMINE
FLOYD** Matheny tells of Carlisle
Floyd's '47 presentation of his
opera OF MICE AND MEN, in
Sydney, Australia last July. A nice
chat with **GRACE LEE BUTLER
Clarke** finds her and her husband
doing well in Charlottesville,
VA. **BERTIE HEMINGWAY
Bunch** admits to sitting under
an umbrella by the pool at
her hi-rise retirement home in
Columbia, SC, trying to stay
cool this summer. **BESS WOLFE
Hill** and Sugar spend their time
going to the beach with their
grandchildren. **SARA WOODRUFF
Pierce** is living in Jacksonville
Beach, FL where her daughter
has added on a mother-in-law
apartment for her. **MARY LOU
ANTHONY** Lefcort lives in NYC,
NY, where she was previously
editor of a non-fiction magazine.
A welcomed note from **BETTE
SHERRILL** McGimsey tells of her
move to a retirement center in
Wilson, NC to be near three of
her six children and closer to the
beach.

1949

IN MEMORIAM

JANE CLEVELAND Gorden,
April 18, 2012
JENNIE GWINN Vermillion,
November 4, 2012
ZULA MCFADYEN Barton,
December 15, 2012
ERNA SEIFART Cooper,
April 1, 2012

1950

IN MEMORIAM

ANNE DOAR Stowe,
August 24, 2012
FRANCES EASLER Moore,
September 18, 2012
KATHRYN MAREE MCCURRY,
September 25, 2012

SYMPATHY

Walter David Bryant, June 27,
2012, husband of **BLANCHE
HARRISON** Bryant

1951

IN MEMORIAM

DOROTHY COGGIN Shamburger,
May 15, 2012
ADRIENNE DAVANT Crawford,
August 14, 2012
SYLVIA MAKEPEACE Craven,
June 7, 2012

**CAROLYN "SISSIE" SNOW
McAlister** was inducted into the
National Shaggers Association in
November 2012.

1952

IN MEMORIAM

DORIS KIMBRELL Wilson,
May 10, 2012
VIRGINIA VANCLEVE Cassell,
January 17, 2012

1953

60th Reunion:
April 12-13, 2013

CLASS REPRESENTATIVE

Marilyn Mateer Sherrill
114 Briarwood Court
Spartanburg, SC 29302
864.583.8066

IN MEMORIAM

MARJORIE BRUCE Beall,
December 11, 2012

MARJORIE KING Cleveland,
May 23, 2012

1954

CLASS REPRESENTATIVES

Bet Shepherd Ancrum
803.831.0205
bancrum@comporium.net

Margaret Jackson Bundy
518 Briarwood Road
Lancaster, SC 29720-1802
mjbundy@comporium.net

Ann Douglass Gibson Nichols
205 Birchwood Drive
Union, SC 29379-1803
864.427.3647

IN MEMORIAM

JANE BEASLEY Moore,
January 9, 2013

SYMPATHY

Millie Douglass Epps, December
30, 2012, sister of **ANN
DOUGLASS** Gibson Nichols
Frank Benjamin Robards, Jr.,
December 4, 2012, husband of
MILDRED ROBERTS Robards

1955

CLASS REPRESENTATIVE

Jo Ann Guyton Davison
1722 Poggio Lane, Unit 1
Missoula, MT 59802-3627
406.829.6376

1956

CLASS REPRESENTATIVES

Ann Hudgens Karegeannes
137 Mabry Drive
Spartanburg, SC 29307-2613
ahkare33@aol.com

Pegilie Price Walter
616 Wotan Road
Columbia, SC 29229-3350
803.419.0986

SYMPATHY

Earl Hackney Russell, Jr., May 6,
2012, husband of **MARY AIKEN
Russell**
KELLY JANE FELMET Long '91
MEd, March 10, 2012, daughter
of **JANE BOLDING** Crook

CAROLYN BYERS Brockwell
continues to sub as church

REUNION2012
Class of 1957

organist and/or choir director. Founder's Day 2012 at Converse was a gala event with great alumnae speakers followed by lunch on the lawn. A special event of the afternoon was hearing Joyce Carol Oates speak about her career as an author and hosting a book signing. **BETTIE JANE WOODWARD Grant** reports on a delightful summer visit with **ANNE GIGNILLIAT Clark** at her home on the Isle of Palms. They had a lunch visit one day with **MARGARET RICHARDS Breeden (Mopey)** in Charleston, SC. The three of them were Dexter residents as freshmen. **ANN HUDGENS Karegeannes** enjoyed a visit with **TOLLY GILMER Shelton** and her husband Barrett during the Thousand Thanks celebration in September 2012 at Converse. They had been traveling on the east coast and had visited with **ELLEN MCLAUGHLIN Rose** at her home in Westport, CT, prior to coming to Converse. A great collage of family photos arrived just before Christmas in Ann's mailbox from **SUNSHINE CONNOR Norwood**. There were great photos of her extended family including two of Sunshine in Maastricht, Austria, and Barcelona, Spain. **PEGILIE PRICE Walter's** Christmas with her family was a series of visits by children and grandchildren at their house in Columbia, SC, over several days.

1957

CLASS REPRESENTATIVES

Patti Moore McGee
72 Anson Street
Charleston, SC 29401
pnpmcgee@comcast.net

Kitty Blake Pearce
27 Savage Street
Charleston, SC 29401
843.577.6688

Margaret Dick Wyman
803.782.8883
maggiewyman@aol.com

IN MEMORIAM

ANN BAUM Cary,
March 11, 2012
TAPP LATTA Hancock,
March 18, 2012
NANCY MOORE Plonk, December
13, 2011



SYMPATHY

George Evans Mitchell, May 22, 2012, husband of **CABELL CARRINGTON Mitchell**
Harry Shingler Shuler, Jr., May 14, 2012, brother of **CELIA SHULER Uimer**

We celebrated our 50th reunion with great enthusiasm at our class dinner at the Piedmont Club. On hand were **CAROLYN FULMER Alexander, HARRIET MAHAFFEY Butler, JANE POWELL Crowder, SARA HAYNIE Fant, MARY LIB SPILLERS Hamilton, JANE GAULT Johnson, JULIE HENDERSON Oates** (with husband Monty), **MARGUERITE GIGNILLIAT Old, PEGGY BRADY Thraikill** and **AGNES WALLACE Williams** (with husband Jim). **MARY JO MILLWOOD Nicholson** attended the morning events. Honors received at the Alumnae Awards Luncheon included "It's a Class Act" award for the class with the highest percentage of classmates contributing to the Converse Annual Fund. Our class also won this award at our 50th class reunion! Carolyn played dual pianos at the Alumnae Recital with her long-time Converse music teacher Joy Nanney Finch '77. Mary Lib and Agnes currently serve on the Alumnae Board as Golden Club Representative and 1950s Decade Representative respectfully. Prior to our reunion dinner, classmates traded family news and reminisced about the "olden days" over cocktails hosted by Marguerite. Of course, it was decided, as so well put by Jane Crowder, that we still are "by heaven, the best that will ever be." Agnes was a past moderator of the Foot Hills

Presbytery in Greenville, SC and also named one of the "Women Making History" in Greenville. Congratulations to **PATTI MOORE McGee** who was named a 2012 Honorary Member by the Garden Club of America. Congratulations to Carolyn Alexander on the birth of her grandson, Clifford Sidney Halstead, Jr., born August 15. **JOAN BARBER Falkner's** grandson, Joseph is an entrepreneur, starting his own business, "Carolina Pines," selling 100% cotton, handmade bow ties all over NC. After open-heart surgery, involving five arteries, **MARGARET DICK Wyman** is back on the golf course and learning the "new" bridge rules with Ann Carol Price '61.

1958

55th Reunion:
April 12-13, 2013

CLASS REPRESENTATIVES

Elaine Finklea Folline
740 Kilbourne Road
Columbia, SC 29205-2048
803.254.9503

Nancy Hayes Wilkerson
2122 Norton Road
Charlotte, NC 28207-2138
nwwilkerson@bellsouth.net

IN MEMORIAM

MARY BELSER Arnot,
May 13, 2012

SYMPATHY

Jack Smyser Folline, March 23, 2012, husband of **ELAINE FINKLEA Folline**
Fred Hollis Reardon, August 28, 2012, husband of **SALLY HICKS Reardon**

KATHERINE RYAN Stribling walks with **BETTY ANNE NELSON Richardson**, when Katherine and husband Cherry are in Columbia, SC. Betty Anne's daughters Anne Richardson Seabrook '82 and Deans Richards Fawcett '85 have both been very attentive to Betty Anne since Don's death followed by a health concern. **ANN WARD Houck** has their house for sale in Florence, SC; she and Billy have renovated the beach house, even with an elevator! **DAISY BARRON Leland** had emergency surgery on March 19 and spent 16 days in the hospital. She received lots of TLC from her surgeon, family, nurses, church friends and her Ashley Hall, Columbia and Converse friends. One visitor was preacher Dagnell Free, who is the son-in-law of Sallie Murphy McCutchen '59. Dagnell is married to Sallie McCutchen Free '87. Mother Sallie and Daisy have something in common which they wish they didn't have. They both have bronchiectasis, which is a chronic lung disease. **ANNE FERGUSON Caughman (Ferg)** joined Daisy's family for Christmas Dinner at the home of Daisy's daughter Libby Leland Puckette '86. **ELAINE FINKLEA Folline's** two daughters Lanie Folline Epting '81 and Emily Folline Mikel '84 are now running the family optical business. **FRANCES SHINGER HASILL LaBorde's** granddaughter made her debut in Columbia, SC during December. Shinger and another grandmother gave a luncheon for both granddaughters at the Palmetto Club. Attending the luncheon were Elaine Folline, Betty Anne Richardson, and Margaret Dick Wyman '57. **ALICE HOWARD McClure** took her family to Clemson last year so they could rub Howard's Rock and run down the hill. A friend was able to open the stadium to make this happen and brought along the Clemson Tiger mascot. **CAROLINE TAYLOR Reddick** is still playing the organ at the First United Methodist Church in Lake Wales, FL. Caroline also plays tennis each day. **MARY JANE MAY Woodward** had her second knee replaced. Mary Jane also saw **GENE GOLEY Pruitt** earlier and Gene looks almost exactly like she did at Converse!

1959

CLASS REPRESENTATIVE

Harriet "Sister" Marshall Goode
131 E. Main Street
Rock Hill SC 29730
803.327.4746
goodeharrietm@comporium.net

IN MEMORIAM

ANN LEDBETTER Chamblee,
September 21, 2012
BARBARA SHORE Hudgens,
September 20, 2012

SYMPATHY

Julia Dargan Bradshaw '88,
February 28, 2012, daughter of
JULIA BREWER Bradshaw
Joseph Beaman Brewer, Jr.,
December 17, 2012, brother of
JULIA BREWER Bradshaw
J. Gary Maynard, Jr., May 8, 2012,
husband of **SALLY MASON**
Maynard

ROSANN FERGUSON Hooks reports that her trip to China was an eye-opening experience where she did the customary touristy things, and ate pig's ear on her birthday! Her trip in September to Sweden, Norway and Estonia was great. Rosann went to San Diego in October with her daughter and her family here to help celebrate the 50th birthday of her other daughter who lives in South Dakota. **GAYLE NEWCOMB** takes weekly piano lessons, and meets monthly with "The Music Café." She's currently playing pieces by Scarlatti and Diabelli. Gayle's paintings are included in a gallery exhibition,

but she said painting is taking a back seat right now while she's involved with a design project on her property. **SALLIE MURPHEY McCutchen** reports things are going well in Columbia, SC, and husband Ted is steadily getting better. **ANGELA MCKINNON Hammond** has had her kitchen remodeled, which she said was a long and arduous project, but the result was well worth the effort. **JANE TORKINGTON White** enjoys traveling to see friends even though she's still recovering from serious illness. **JAYNE CALLAHAM Burton** reports that husband Tom, is recovering nicely, almost back to full strength. **MARIGENE PLAYER Simmons** and **TAG SIDDALL Johnson** got together at DeBordieu in the spring. **MARGARET (PEACY) CAMPBELL MacDonald** is the incoming board chairman of Trident Academy, Charleston, SC. **CAROLYN SWAIN Rice** and husband George went to Trinidad for their grandson's wedding! **DAWN HILL Elliott** and her husband Don have a collection of August Cook paintings, including a portrait of Dawn that Mr. Cook painted when she sat for the art studio. **SISTER GOODE** is still painting and very pleased to have had a solo show in the Milliken Gallery at Converse in November.

1960

CLASS REPRESENTATIVE

Donna Culbertson Fritz
105 Sunline Place
Spartanburg, SC, 29307
maximum1983@cs.com

SYMPATHY

Mary Louise McLurkin Stokes,
June 6, 2012, mother of **FREDA STOKES Summers**
Bennett Lyon Helms, December 31, 2011, husband of **JEAN YARBOROUGH Helms**

CAROLE JONES' grandson, Dustin Johnson, continues his success on the PGA Tour; he is one of the top golfers on tour. **FRANCES "FRAN" EVANS Read**, who lived on Wadmalaw Island for years, now resides with her husband Peter at the Bishop Gadsden Retirement Community. Fran's daughter Frances and Daisy Barron Leland's ('58) daughter Libby ('86) married brothers and now they live next door to each other on Johns Island. **JANE MCCUTCHEEN Brown** lives on James Island nearby and has visited with Daisy by phone.

1961

CLASS REPRESENTATIVES

Betsy Blythe Frazer
324 Nottingham Drive
Chapel Hill, NC 27517
ebfrazer@earthlink.net

Marietta Williams Gordon
310 Laurens Street
Camden, SC 29020
803.425.4118

Frances Taylor Meissner
PO Box 274
Seaford, VA 23696, 757.898.4277

SYMPATHY

LOUISE JORDAN Earle '37, June 21, 2012, mother of **LOUISE EARLE Oxner**
Harold Alfred Simms III, June 9, 2012, partner of **LINDA PAGE Hudgins**

JO CARR Ussery took the trip of a lifetime last fall! She and Harry traveled to Johannesburg, South Africa, then to Botswana on an animal safari, and then to Victoria Falls in Zimbabwe. Ferried by small planes between campsites, they stayed in upscale tents on platforms with full facilities, including running water. The highlight was seeing animals in the wild up close on morning and evening excursions. **ANN CAROL HALL Price** reports they

are fully retired. Bob is returning to golf and learning bridge; she is a "bridge nut" and loves her book group. Her daughter, Sloan '96, just earned her RN. **CAROLINE SUMNER Cash** and Jerry have been in Key West, FL, for 33 years. She is still a folk performance artist with the Caribbean Queen Junkanoos, www.junkanoos.com. In 1985, she was appointed Conch Republic Ambassador to the Sovereign State of South Carolina. Her Lake Murray home is the embassy when she is in residence during hurricane season. They are in both phone books and welcome calls with proper notice. **SUSAN HAWKINS Bruns** continues to live in Indonesia for several months each year. She welcomes summer calls to her Murrell's Inlet home. **LACLAIRE WILLIAMS Laffitte** spent several wonderful days with **MARY BEIRNE KERR Nutt** in Staunton, VA, last May. **BETSY BLYTHE Frazer's** new grandson, Avery William Frazer, arrived last April in NYC. **LAURA SIMPKINS Stock** and Ken celebrated their 50th wedding anniversary with their entire family last summer. Ken has been cancer free for a year now! Their oldest grandchild is at Anderson College. **SYLVIA HARLEY Arant, BETTY LAKE Orr**, and **BETSY BLYTHE Frazer** had a second mini-reunion in Montreat last August and hope to make this a yearly event.

1962

CLASS REPRESENTATIVE

R. Mimi Little McKinney
1145 Partridge Road
Spartanburg, SC 29302
864.585.3151
Troysr@aol.com

IN MEMORIAM

ANN GRESSETTE Noll,
April 28, 2012

SYMPATHY

Jane McGowan Nisbet, May 14, 2012, sister of **MARIAN MCGOWAN Nisbet**

Many thanks to **DIXIE CRUM Stone** as class representative for the last 50 years and to Converse for making our Golden Reunion



Alumnae, students and friends of Converse gathered at Lake Summit August 2012.

Were you TAPPed? by Carrie Hill Coleman '96

When soliciting funds for organizations, the old adage is “people give to people.” Last year’s success for the Converse Annual Fund was certainly no exception. While we could have relied on a glossy mail piece, we kept coming back to the notion that the best way to increase our alumnae giving participation would be to coordinate a peer-to-peer campaign, with alumnae volunteers calling their classmates. Hence the development of T.A.P.P.—“Touching Alumnae Peer-to-Peer”—a day-long event held on campus last June for alumnae to call members of their class to encourage them to give to Converse. With almost 20 alumnae calling on campus and many more calling from home, we wound up with a total of 63 volunteers representing over 30 classes reaching out to their fellow alumnae last June. The rest, as they say, is history. At the end of the fiscal year, Converse was able to raise alumnae giving participation from

23% (2010/2011) to 26% (2011/2012), bringing in almost 300 additional alumnae gifts as compared to the year before. Thanks to the amazing efforts of our Class Fund Chairs, Alumnae Board members, members of the Board of Trustees and Board of Visitors, the College was able to garner an additional \$30,000 for the Annual Fund from the Trustees through the ONE Challenge. Every gift given by an alumna, regardless of the amount, truly made a difference and helped Converse increase alumnae participation for the first time in seven years.



“I guess I was a little excited to see so many alumnae on campus for TAPP!”



ONE gift. ONE fund. ONE Challenge.
ONE BIG THANK YOU!!

Carrie Coleman '96 is Director of Alumnae and Donor Relations.



“Medals” celebrated our successes.



Want to be a part of TAPP for this fiscal year? Email carrie.coleman@converse.edu.

TAPP On-Campus: (left to right from top) Kimberly Smith '06, Nancy Smith Gage '82, Emily Collins, Maggie Lawter '13, Brooke Rowell '13, Elizabeth Simons, Shannon Gosnell Bishop '97, Melissa Daves Johnson '69, Ann Mayo Elliott '64, Henri Odell Humphreys '60, Caroline Watts Morris '64, Skippy Herbert Hale '48, Mariana MacIntyre '81, Agnes Wallace Williams '57, Carrie Hill Coleman '96, Emily Harbin '99, Kelly Orner '08, Melissia Heatherly Brannen '03, Susan Miskelly '97 and Sally Jeter Hammond '81

such a great event! **MAREON CHAPMAN Stall** overheard a 2012 student say, "I hope we look and act that young when we're golden girls." **LYDIA WILLARD Kellett's** favorite thing about reunion was seeing **WINKIE GIDDENS Greer** again. **CLAUDIA MCCOLLOUGH, MICHAEL HOLT Crawford** and cohorts regaled us during our class dinner. **JO ANNE SMITH Cole** sang and **DOTTIE HENDERSON Wise's** husband played our class song. **PATSY DAVIS Nates** and Jim, **KAY DUPRE Boggs, SARAH MAULDIN Blackmon** and **ANN SPEARS WILBURN Roddey** dined on china that actually belonged to Dexter Edgar Converse himself. **ANNA WATKINS Hattaway** and Sandy rafted through the Grand Canyon with four grandchildren. **SANDRA SPEARE Parker** and **GEORGIANNA HAYES Ballenger** are two of **MIMI LITTLE McKinney's** great bridge partners. Mimi also has a piano duet partner, and they play concerts for friends called "piano parties." **MALINDA MAULDIN Whitelaw, DORIS RIDGEWAY Hotaling** and **NOVIE MCCREE Greene** are award winning musicians and teachers from our music school. **RHODA GEASLAND Toombs**, a French horn player, is living with husband Larry in Alexandria, VA. **JOLENE WILLARD Bryant** has distinguished herself in the field of Women's Clubs in SC. **RANNIE SPARKMAN Townsend** moved into an apartment in the beautiful Cascades retirement complex in Greenville, SC. **SUZANNE PICKENS Alexander** and Cantey cruised the Danube in September for their 50th anniversary. **MARY "MUFF" HOWE Tate** owns her landscaping business "Garden by Design" in Southern Pines, NC. **LAUREN ROTHROCK Dick**, a journalist, and husband Dill travel extensively and live in Alpharetta, GA and Lookout Mountain, TN. Hats off to **KAYE BRIDGES Pattillo**, husband, children and grandchildren, who have spent the last three summers doing mission work in Nicaragua. Congratulations to **MARIAN MCGOWAN Nisbet** on her marriage to Ted Hartsock on August 31, 2012.



GOLDEN CLUB INDUCTEES

1963

50th Reunion:
April 12-13, 2013

CLASS REPRESENTATIVES

Betty Moore Henderson
13302 Tosca Lane
Houston, TX 77079
713.465.0940

Emily Kerr Stay
440.338.8221
estay@windstream.net

Lou Hoffler Bright
1103 Sourwood Circle
Chapel Hill, NC 27517
919.968.1455

We are traveling, loving our grandchildren, enjoying retirement, and getting ready to attend our 50th Converse Reunion! **ANNE FLINTOM McLeod** and Mac visited England and Scotland, staying on the grounds of Dunvegan Castle, the home of Clan McLeod on the Isle of Skye. **GIBBIE SCOTT Walters** entertains her family in the north Georgia mountains. **CECIL LEWIS Caldwell** and **KAY WALL Bieberdorf** met at Lake George, NY, this summer, celebrating the birth of Kay's twin granddaughters. **LISH EARLY Willey's** travels found her seated near Clint Eastwood at his restaurant in Carmel, CA.

BETTY MOORE Henderson spent Easter in Costa Rica. **EMILY KERR Stay** enjoyed quilt shows and classes in Pennsylvania, Ohio, Wisconsin, and North Carolina. **BARBARA BROWNE Langhorne** spent a week in Savannah, where she saw **HENRIETTA MCNEAL Smith. NANCY THAYER Jennings** toured France recently; Harold and **RHETTA FAIR Wilson** toured Budapest and Prague. In between trips to Australia and India, **AGNES BINDER Weisiger** had lunch with **ELLEN ROSE Barnette. PENNY ROBERTS Rose** is playing the organ for a church in Black Mountain, NC. **MARY WIN CORCORAN Watson** wonders how we could possibly be having a 50th reunion when we're all still twenty-one! Nonetheless, Lish, Rhetta, **BETTY REYNOLDS Oare, DORRIS CALLICOTT Douglass, SALLIE HUCKEL Baker, JUDY WAINER Ponce** (from Mexico!), **NELL HIGDON Hudson, NANCY BROWN Davis, GELENE DUNCAN Ellsworth, SUDIE DAVIS Anderson, HATTIE LIDDON Andersen** (from Denmark!) and (just maybe) **JANE GIBSON Brown** are among those who have April 12-13, 2013, on their calendars. Call your roommates and buddies and make plans to attend together!

1964

Next Reunion:
2014

CLASS REPRESENTATIVES

Liz Harkins Biosca
807 S. Mountain View Circle
Johnson City, TN 37601
423.926.9897

Sarah Miller McDaniel
1140 Pilot Boy Road.
Wadmalaw Island, SC 29487
sarahmcdanielw@bellsouth.net

IN MEMORIAM

NANCY RAND McInnis Waddill,
May 26, 2012
J. ROSS ALBERT, MMus,
December 14, 2012

SYMPATHY

Benjamin Robinson Pickens, Jr.,
April 22, 2012, brother of
LAURA PICKENS Wagner

MALINDA WILLARD interviewed a student doing a paper on the role of women in area churches. Malinda says we need to pass on our memories of Converse to the younger generation, especially our memories of Miss Mary Wilson Gee. **JUNE MCINTOSH Uhler** and husband Burnham visited with four of their six grandchildren in New York in June. See a review of

the book *The Naughty Grandmother* by **JUDY FESSEY Bradley** on page 23. All proceeds go to Children's Hospital in Savannah, GA. **PAT CROW Barte** visited with **MARGARET FLOWERS SMITH Lowery** and **HELEN CABELL Moffat**, both of whom live in Jackson, MS. **ELLEN BRYANT Voigt** wrote: I'm thinking it would be very nice (and appropriate) for you to mention the death of Tom Landess in January as so many of us had him for freshman English. Who can forget him sitting on his desk, singing "Love, O Love, O Careless Love" and strumming along on his ukulele? I **SARAH** wanted to add that Tom Landess was a gentleman and a gentle man. "I will forever remember his classes and his great sense of humor."

1965

CLASS REPRESENTATIVES

Peggy Clotfelter Allen
733 Glenwood Drive
Athens, GA 30606-4627
706.546.9960

Anne Coffey
805 Northern Shores Point
Greensboro, NC 27455
annecoffey2@aol.com

IN MEMORIAM

CAROL ANNE STACY Harley,
December 31, 2012

SYMPATHY

MARY HIPP WILLSON McCutchen
'37, May 7, 2012, mother of
AILA JESS MCCUTCHEM
Parker Whedon, March 16, 2012,
husband of **VIRGINIA SIMPSON Whedon**

SUSU PHIFER Johnson and George Dean's daughter Susanna Presnell Johnson was married in May at the Church of the Advent in Spartanburg to Timothy Michael Shannon. The reception, dinner and dancing, was held on the Quad at Converse. In attendance were **ANN TRAMMELL Holmes**, **MISSY WILLIAMSON Anderson** and **KATHY COHEN Willard**. Susanna and Tim are NYC residents. Congratulations are also in order to Susanna for completing her Master's at NYU

the week of the wedding! **BETTY BYERS Mastley** writes she, **BIBBA WALKER Thomas**, **CHARLENE SEIGLER Wells** and **JUDY WELLER Starr** got together in Myrtle Beach at **ROSEMARY NEWTON Young's** condo. It was the first time they had seen Judy in 48 years! Judy owns and runs a winery in Paso Robles, CA and also brought along some of her fine wine. Bibba lives in North Carolina on a hunting and fishing "farm." Rosemary is running Bass-Smith Funeral Home in Hickory, NC. **MARION RIVERS Cato** had a wonderful visit with **TRIS GOWEN Graybeal** and Jim while they were visiting Charleston, SC this spring. Marion was at the Wyoming ranch for the summer. She and Wayland hosted nine Converse ladies for a travel/study Western history course the last of May. Dr. Edward Woodfin taught classes and organized field trips to battlefields, Indian reservations and museums in their part of northern Wyoming. The Cato's wanted to offer the experience of a working cattle ranch, including branding, which has been in existence since the last of the Indian wars in the late 1800s. **ANNE COFFEY** had a wonderful lunch with **CRAIG HARRIS McDaniel** in Blowing Rock, NC this past summer.

1966

CLASS REPRESENTATIVES

Mildred Gee Akers
970 Sandpiper Lane
Orange Park FL 32073
904.264.8854

Linda Whitnel Crimm
4445 Silverwood Lane
Jacksonville, FL 32207
thecrimms@gmail.com

IN MEMORIAM

CYNTHIA WHITE Dixon, MMus,
December 24, 2011

SYMPATHY

Nancy Baker Brown, August 25,
2012, mother of **ROBBIE BROWN Gray**
Joe Butler Pearce, December 12,
2012, husband of **JO LYNNE LAMBERT Pearce**

Catherine Witschen Sears, July 21,
2011, mother of **CATHERINE SEARS Towers**
J. Givens Young, March 26, 2012,
father of **MARIAN YOUNG Howard**

MEG HINES Fisher retired as a Carlisle Consultant after 21 years. Her husband, Ellis, is enjoying his full-time pediatric practice in Gastonia, NC. Meg visited with **KATHRYN INGRAM Lyon** in High Point, NC. Kathryn and her family were on their way to the beach. **ANN SIENKNECHT Humbracht** and Rick celebrated their 42nd wedding anniversary. They spend their travel time visiting children in Nashville, Chicago and San Diego. Ann visited with **KITTY OLDHAM Young** in July. **JACKIE ELLSWORTH Bourque** is a volunteer with the Lutheran Church and is president of the United Way Board of Front Royal, VA. Jackie goes back to Beaufort, SC to see her mother (a healthy 88 years old) and sisters. **EDITH HAMILTON Kuhnle** is still painting and shows her art at the Addison/Ripley Gallery in Washington, DC. She has a large installation at the German Marshall Fund. Her husband John is doing educational consulting, which has taken them to Saudi Arabia and other Middle Eastern countries. **HALLETT JONES Worrell** has retired from teaching and moved permanently to Murrells Inlet, SC since losing her husband Pat in 2009. Her children live nearby. **CAROL GEYER Furtwangler** is busy editing. She won the John H. Bennett, Jr. Competition sponsored by the Poetry Society of South Carolina and will be published in their yearbook in September. She completed her fifteenth year as coordinator of the Piccolo Spoleto Sundown Poetry Series held annually in Charleston, SC. **PAULA RUSSELL Vaughn** is moving to an active 55+ community, Anthem Ranch, in Broomfield, CO, to be nearer two of her children. She has a consulting business. **LUCY FITZGERALD Steele** and Rusty are retired in Richmond, VA after 16 moves. She is overwhelmed with volunteer work but loves everything with which she is involved.

1967

CLASS REPRESENTATIVES

Lucia Cleveland Johnson
35 Meadow Lakes Terrace
Cedartown, GA 30125
706.346.6440
luluatwinshape@yahoo.com

IN MEMORIAM

CHAMIN WALKER Meadows,
December 24, 2011

SYMPATHY

Eugenia Turrentine Aiken, August 24, 2012, mother of **SYDNOR AIKEN Money**
Wilbur Lee Carter, Jr., July 20, 2012, father of **JUDY M. CARTER**
Myers Hampton Hicks, November 2012, father of **RACHEL HICKS Crosby**
Frances Fields Holliday '36, July 15, 2012, mother of **BETTY HOLLIDAY McLeod**
Lewis G. Holland, Sr., October 5, 2011, husband of **KAY ROBINSON Holland**

If you were not at our 45th reunion, you were greatly missed. Those of us who attended were small in number, but we all had a wonderful time. Our 50th will be here before you know it. Start making your plans to be there! **JUDY GORDON Collier** had a great visit with **CONNIE CAREFOOT Durrence**, and later that same week, Connie got together with **NANCY NEWSOME Lande**. Judy also ran into **NANCY MCCALL Poynor** when she and **THEO NEWSOME Greene** attended the Birmingham Symphony. **ANN ARMOUR McCoy** is enjoying retirement and traveling. She plans to visit **ZAZA HUMPHRIES Meade** during a visit to Sacramento, CA. **SANDRA SHERARD Bethea** and Bob welcomed their fifth grandchild New Year's Eve. They are now living in DeBordieu and say the welcome mat is always out. A note from **JANE WITHERSPOON Hope** states she and hubby are retired and enjoying life. Their two sons each have two sons. **CLARA IRWIN Traver** has retired after 46 ½ years, mostly at The Lovett School. She is working on a comprehensive history of the

school and is also writing a book. She has moved back into the house of her childhood. Her dad built it in 1937, and her daughter, Dorothy, renovated it in 2003.

KAKI WILLIAMS Swann is Rector of an Episcopal parish in Virginia. Her mother, father, grandmother, grandfather and other relatives are all buried in one of the graveyards of one of those churches, built in 1706. Her grandfather also served as rector of the same parish. Her husband, Bob, is retired. Thanks to all who helped with news for this publication and also a great big thank you for those who helped with the Class Fund.

1968 45th Reunion:
April 12-13, 2013

CLASS REPRESENTATIVES

Carol Early Graham
727 Alta Vista Drive
Vista, CA 92084-5511
760.758.7615

Caroline Gordon Grimball
109 Walden Court
Columbia, SC 29204-4043
caroline5828@bellsouth.net

Barbara Baker Kennedy
4400 Dewees Court
Raleigh, NC 27612-3501
919.782.9459

Ann Wallace Nichols
6607 Greenville Highway
Brevard, NC 28712-6400
WallaceNichols@gmail.com

IN MEMORIAM

KATHERINE MERRELL Glenn,
September 5, 2012
THOMAS CECIL Smith, MMus,
July 23, 2012

SYMPATHY

Lucius Gartrell Milam III,
November 14, 2011, husband of
BROWARD BENNETT Milam
Thorne Scott Foster, January 12,
2012, husband of **DENNIS**
CANTEY Foster

JEANNETTE PROPST Ellison
'40, July 18, 2012, mother of
CAROLYNE ELLISON Lyles
Harry Caldwell Johnson, Jr., April
28, 2012, father of **PAMELA**
JOHNSON Drummond
VIRGINIA MAXWELL MANNING
Moses '44, June 7, 2012,
mother of **VIRGINIA M. MOSES**

CAROL EARLY Graham made the acquaintance of Melinda Maudlin Whitelaw '62. Melinda attended a concert in Vista, CA where Carol was playing piano/organ. Converse was mentioned in the program notes, and Melinda, a voice major now, had a musical friend in her new hometown. Small world!!
KITTY SHERTZER Robinson, executive director of the Historic Charleston Foundation, presented the keynote address and received an honorary degree during the Art Institute of Charleston's Commencement in June. **VICKI ZOUCK Waite** retired in June, and she and Steve have moved to Island Park, ID.

1969

Next Reunion:
2014

CLASS REPRESENTATIVES

Cathy Riley Howle
808 Law Plantation Road
Darlington, SC 29540-7607
rileyWilds70@gmail.com

Ashley Fine Nagle
301 Kirk Lane
Media, PA 19063-2217
avfnagle@hotmail.com

Cissy Smith
3015 Rhodenhaven Drive NW
Atlanta, GA 30327-1225
404.352.5249

IN MEMORIAM

PAULA JEAN Wise,
January 21, 2012
SUSAN JANE Collins Hardaway,
November 18, 2012

SYMPATHY

VIRGINIA MAXWELL Manning
Moses '44, June 7, 2012,
mother of **MARJORIE MOSES**
Schwab
James Elliott Messer, December
8, 2012, brother of **HARRIET**
MESSER Goldsmith

Please make a resolution to connect with Converse and your friends by sending some news to us and by making a donation to the annual fund! **NANCY FOWLER Willis** and hubby, Clay, cruised in Alaska to celebrate turning 65. Nancy works at Quest Diagnostics in anatomic pathology. **BETH STRINGFELLOW Spann** and retired husband, Henry, have two daughters, Elizabeth, a writer of mysteries, and Mary Ligon. Beth has a new email, bethspann5@gmail.com. **LINDA RUSSELL Cranford's** husband, Sam, is a real estate appraiser while Linda works with United Way and serves on the Board of Directors of The National School Boards Association. Daughter, Catherine '96, and family live in Charleston, SC while son, Davis, moved to New Orleans, LA in June. She ran into **GINNY CRAVER Good** there at the Mother's Day buffet lunch. **CATHY MANCKE Tisdale** has a new granddaughter named Bailey, born on June 21 in Montgomery, AL to daughter, Pamela and

husband, Brad. **ANITA PARKER Zeigler** has two new grandbabies with a grand total of four now. She is involved with Bible study groups. **CATHY RILEY Howle** has three granddogs, who are cute, but nothing else in the works. **CISSY SMITH** traveled to South Africa last August with sister Janice, and brother-in-law, Michael, traveling through Kruger National Park, Capetown, Zimbabwe, and Victoria Falls as well as Botswana; she recommends this trip to all! She traveled to Cuba with her church group in February and enjoyed seeing places her parents traveled on their honeymoon in 1939.

1970

CLASS REPRESENTATIVES

Janice "Smack" Mack
336.282.0520
janice.smack@gmail.com

Lynn Hicks Mitchell
276.632.4232
ethmitch@gmail.com

SYMPATHY

Danny Earl Allen, September
7, 2012, husband of **GAIL**
HUGHES Allen
ALEINE RUDISILL Martin '36,
June 25, 2012, mother of **ANN**
MARTIN Ridley
Elizabeth Carter Ayres, August 26,
2012, mother of **KAY AYRES**
POWELL, MAT
J. Givens Young, March 26, 2012,
father of **BETH YOUNG Gilbert**

It was great to hear from **SHERRI BOWERS**; she lives in Georgia and visited Converse in the fall, saying it looks beautiful. **MARION BROOKE Carson** is enjoying a new chapter with new husband Charlie; they travel and visit grandchildren. **JAN RORBECK Dees** and husband David spent a month in Alaska fishing and hiking. **CLAIRE HAILEY Hall** and Scott spend as much time as possible with their five grandchildren. **PATTY DOWNES Johnson** got together with **ANN OWENS** and **CAROLINE ROPER Roberts** in DC while with Steve on a business trip there; all three are doing great. **PERRY HICKS Jordan** and family spent the holidays in France. **EILEEN NOLAN Rampey** spent the holidays in Costa Rica. **SUSAN DUKES Webber's** youngest



Alumnae gathering
in Cashiers, NC at the
home of **Susie Ween '71**



son got married in October. **THAYER CHEATHAM Willis** recently wrote and published a book in connection with her business; its title is *Beyond Gold: True Wealth for Inheritors*, and it has received good reviews. **Smack** saw **BARBARA HOLMAN Stith** in the spring; had not seen her in years. **ANN JOYNER Cross**, **NANCY JANE STEDMAN Calloway**, **LYNDA SMITH "Smitty" Swann** and **Smack** got together for dinner in November; Ann is enjoying her first grandbaby; Smitty leads a company by week and relaxes in Blowing Rock, NC on weekends while keeping up with one daughter in Vancouver and one daughter in DC. **HOWARD BROWN Millican** continues her interesting world travels; she took **Smack** to the airport for flight to NH for the wedding of **LYNNIE HICKS Mitchell's** youngest daughter in December; Lynn timer was an elegant and gracious mother-of-the-bride. As for me, I (Smack) am still teaching, and the challenges continue to increase.

1971

CLASS REPRESENTATIVES

Nancy Lide
2032 Sussex Lane
Winston Salem, NC 27104-2208
336.722.6882

Jane Byrd Melton
115 Bickerstaff Road
Clemmons, NC 27012-9053
336.778.1760

Mindy Thompson Orman
1040 Gateway Lane
Nashville, TN 37220-1043
orman@realtracs.com

SYMPATHY

ZULA MCFADYEN Barton '49,
December 15, 2012, mother of
LINDA BARTON Tillman
Roselyn Bundy Thomas, August
2, 2012, mother of **MARGARET
THOMAS Thompson**
Joe Thompson, Jr., March
24, 2012, father of **MINDY
THOMPSON Orman**

Following her retirement, **PATRICIA WOMACK** moved from Augusta, GA back to her home state of South Carolina and chose Columbia to be near family. She is keeping her credentials current in case she decides to practice as a therapist, but is enjoying working part-time at Chico's. She would love to connect with some of the other alumnae in the area so look for her at Chico's. **JANE BYRD Melton** had a great weekend in April with **ELLEN BRADY Owens** in Raleigh, NC as they enjoyed their 45th high school reunion together at St. Mary's School. **PAGE PARSONS**, **NANCY LIDE** and **Jane Byrd Melton** met in Winston-Salem, NC for lunch and many laughs. Congratulations to **MARGARET THOMAS** on her marriage to **Anthony Thompson** on January 20, 2012!

1972

CLASS REPRESENTATIVES

Jill Rushforth Coker
17 Collins Ridge Drive
Greenville, SC 29607-3775
864.281.0314

Betsy Crane Griffith
238 Mountain View Road
Princeton, NJ 08540-7718
southernbcg@aol.com

Florence Twitty
525 Woodland Street
Spartanburg, SC 29302-2762
864.585.5018

IN MEMORIAM

CONSTANCE BRATTON Grine,
May 5, 2012

SYMPATHY

Anna Elizabeth Watson, June 20,
2011, daughter of **HARRIET
GARDNER Watson**
Harry Caldwell Johnson, Jr., April
28, 2012, father of **DEBORAH
JOHNSON Hamilton**
KATHERINE "BECKY" GWATHMEY
Swann '37, November 19, 2012,
mother of **MARY G. SWANN**

BETTY JAMES Montgomery hosted our class dinner at her lovely home in Campobello, SC. We toured her beautiful gardens as well as enjoyed the gracious ambiance of her home. **VICKI HUNT Cox**, Converse's Distinguished Alumna recipient, is the FAA's Assistant Administrator for NextGen and is leading the transformation of the nation's air transportation system. **SHELLEY WILLIAMSON Widenhouse** retired from the Centraline Council of Governments in Charlotte, NC. She enjoys farm life with the horses, trail riding and horse camping. **LISSA FOWLER Smith** retired after 38 years of teaching physical science. **LUNA POINTER Hollett**, a meeting planner, and husband **Dave** live in Birmingham, AL. **MELANIE CAMPBELL Thomas**

and husband **Billy Bowman** married in June 2012 and live in both Vicksburg, MS and Greenwood, MS. **BETTY ALLEN WYATT Graham** lives in Winston-Salem, NC with her husband **Conrad**. Their son, **Conrad, Jr.**, works with Wells Fargo Securities in Winston-Salem, NC and their son, **Hunter**, works for Legacy Development in Charlotte, NC. **BECCA BOHANNAN McKinney** has an interior design business in Raleigh, NC. **ELIZABETH WOOTEN Welling** lives in Columbia, SC. **SALLY WILLIAMS Thompson** lives in Saddle River, NJ with husband **Steve** and is celebrating the recent birth of their second grandchild, **John Rhys**. He joins his sister, **Alexis**. **FLORENCE TWITTY** is on the flower committee and the bereavement committee at the Church of the Advent in Spartanburg. **BETSY CRANE Griffith** is our Chair of the Board of Trustees at Converse. **Betsy** and her husband **John** have a son, **Hunt**, who started Johns Hopkins in engineering in the fall as well as **John III**, who married this fall. **JILL RUSHFORTH Coker** is the Vice President of the Music Club of Greenville and is actively preparing for the national convention to be held in 2013 in Greenville. **SARAH BROWN Stewart** is an Administrative Law Judge for the Social Security Administration in Mississippi.

REUNION2012
Class of 1972
CLASS DINNER



1973

40th Reunion:
April 12-13, 2013

CLASS REPRESENTATIVE

Peggy Kelly Lancaster
510 Connecticut Avenue
Spartanburg, SC 29302-2127
864.582.0587

IN MEMORIAM

JOSEPHINE LIPPARD Earl, MAT,
May 18, 2012
ELIZABETH THOMAS Street,
January 11, 2013
MARY BAILEY VANCE Suitt,
August 12, 2012

SYMPATHY

GENE BOYLE Brading '40, April 6,
2012, mother of **MARY ALICE**
BRADING Wallace
Margaret Missouri Homesley
Marrash, December 14, 2010,
mother of **SUSAN MARRASH-**
Minnerly
David Anthony Marrash, April
1, 2012, father of **SUSAN**
MARRASH-Minnerly
Robert Glenmore Sharp, January
26, 2013, father of **ESTHER**
BYNUM SHARP

1974

Next Reunion:
2014

CLASS REPRESENTATIVES

Amanda Horton Dorman
6 Marsh Point Drive
Savannah, GA 31406-3218
ahdorman@comcast.net

Elizabeth Elmore Rhoad
308 Laurel Drive
Lexington, SC 29072-3542
803.957.5809

SYMPATHY

Mildred Elliott Berl '38, January 5,
2012, mother of **JANET BERL**
Burman
SUSAN COLLINS Hardaway '69,
November 18, 2012, sister of
ELLEN COLLINS White
Dorothy Sterne Horton, mother of
AMANDA HORTON Dorman
SARAH HUGHES LINEBERRY '81
MEd, April 25, 2012, mother of
JAMES BENJAMIN LINEBERRY,
MEd
J. Givens Young, March 26, 2012,
father of **MARY YOUNG**
Swink

1975

CLASS REPRESENTATIVE

Elizabeth Knight Borders
864.968.1429
libby.borders@gmail.com

SYMPATHY

Thomas Cook Bingham III, August
4, 2012, father of **LAURA**
BINGHAM Ritch
ELIZABETH NEWTON Lott '42,
September 8, 2012, mother of
KATHRYN LOTT Garrick
Charlotte Allen Meadors, January
6, 2012, mother of **LUCY**
MEADORS Frank
Katherine Coate Russell, November
17, 2011, mother of **SANDY**
RUSSELL Hartnett

LIBBY KNIGHT Borders had
the pleasure of spending a
week at Ponte Vedra, FL with
GINA MCGINNIS Long, **LILLIAN**
MONTGOMERY Lawrence,
NANCY ORDERS Smith and
LOUISE MALLOY Bonner! You can
imagine...MUCH chatter! They
also very much enjoyed seeing
DEBORAH DRENNON Gervin,
who lives in the area. Deborah's
email address is debgervin@aol.
com. **AVAN YATES** Moore stayed
overnight with Libby on her way to
Charlotte and it's always great to
see her! We continue to welcome
grandbabies! Nancy Smith's
daughter, Lindsey, had Jackson
Orders Henson on March 13, 2012
and **FRAN BARR** Strickland's
daughter, Erin '03, had John
Benjamin McCutcheon IV on April
20, 2012!

1976



CLASS REPRESENTATIVES

Lisa Williamson Anderson
3301 Russell Road
Alexandria, VA 22305-1725
LAWHunt2@aol.com

Liz Gordon Martin
4528 Ivy Hall Drive
Columbia, SC 29206-1229
803.960.9138

Claire Connors Wharton
105 Thousand Pines Lane
Tryon, NC 28782-3540
ccwharton@mac.com

IN MEMORIAM

MARGARET ALLEN Tyson,
March 22, 2012
GAIL DUFFIE Stebbins,
June 14, 2012

SYMPATHY

Robert Glenmore Sharp, January
26, 2013, father of **ELISE**
SHARP Moore
MARGARET FULTON Walker '45,
October 4, 2012, mother of
ANN FULTON WALKER

Hello Class of 1976. The Converse
magazine is online! By logging
into the Converse website, you can
read the past magazines. A big
thank you to **HAIDEE CLARK** Stith
for helping on the Alumnae Board
as secretary. **MACKEY TARRANT**
is a Senior Zoning Analyst with
the Zoning Board of Appeals for
the City of Columbia Planning
and Development Services. **LIZ**
GORDON Martin stayed busy at
home with a wedding in December.
She is the ICU charge nurse at
Providence Hospital. I'll bet most
of you have tweaked the heck
out of your education and doing
something wonderful, yet different.
Share. Be a Facebook friend:
Converse1976. It was recently
created from an idea of Claire,
Lisa and Liz that we shared last
year at Reunion. Our hope is for
an easier way to connect, share
and reminisce. The page is in
its infancy. Any suggestions will
be greatly appreciated. Go Pink
Panthers.

1977

CLASS REPRESENTATIVES

Pam Ellis Hall
423 Greenfern Court
Burlington, NC, 27215
336.584.6382

Lucy Hudson Stemberidge
5595 Sequoia Drive
Forest Park, GA, 30297-4080
sopranolucy@att.net

SYMPATHY

George H. Mattiske, Jr., January
25, 2013, husband of **BOBBIE**
TWITTY Mattiske

The Class of 1977 turned out
in record numbers for our 35th
reunion! It was heart-warming
to see classmates who had not
come back to Converse in many
years. **JANE** BOATWRIGHT
Schwab planned and hosted
our class dinner at the cabin on
campus Saturday evening. (Read
a review of Jane's new book, *The*
Welcoming House, on page 22.)
JEAN PARKS Bunch assisted with
planning and shared her famous
cheese straws. **AMY GIBSON**
Montague prepared delicious
desserts. **SUSAN KIRBY** Roe
gave a moving vocal performance
at the alumnae recital. Susan is
Associate Professor of voice at
Abraham Baldwin Agricultural
College in Tifton, GA. **GAIL RAWLS**
Jeter received the Converse 100
Award. Gail is a Brownfields
Specialist with CTC Public Benefit
Corporation in Columbia, SC.
KATHERINE GRAVES KING-

REUNION2012
Class of 1977
CLASS DINNER



Alumnae gather at the home of Ken and Martha Howard '80 in Raleigh, NC.



Goodrich is a certified nurse-midwife with Kaiser Permanente in California. **CLAYTON LIPPINCOTT Harvey** was recently featured in an episode of "My Ride Rules" on Speedvision. **MARGUERITE CALLAHAN** is a Nurse Practitioner and Adjunct Faculty Member at the Vanderbilt University School of Nursing and frequently travels to Haiti. **LAURIE SULLIVAN Cannon** is a master gardener and active in the Columbia Garden Club. **ROSEMARY LITTLEJOHN Kirby** and husband Marshall are happily retired from 31 years of service in the SC public school system. **NANCY NIX Jones** is a consultant with Cartesian Consulting, Inc. in Atlanta, GA. **SUSAN BECKHAM Zurenda** teaches English at Spartanburg High School. Congratulations to **DONNA KAISER Croft** on being named the 2012 South Carolina Council for the Social Studies Middle School Teacher of the Year. Donna teaches at Cario Middle School in Mount Pleasant, SC. She has done an outstanding job as our class rep and was instrumental in bringing us together for our memorable reunion weekend. **PAM ELLIS Hall** is our new class representative and **LUCY HUDSON Stembridge** has graciously agreed to continue as co-rep.

1978 35th Reunion:
April 12-13, 2013

CLASS REPRESENTATIVES

Lee Ullman Hutson
3128 Oakview Road
Columbia, SC 29204
803.782.4980

IN MEMORIAM

ELAINE BURNS Eilenberg MEd,
September 11, 2012

SYMPATHY

Dorothy Sterne Horton, July 8,
2012, mother of **AMANDA HORTON Dorman**

Howard K. Olive, October 27,
2012, father of **KAREN N. OLIVE**

Curtis Howard Dickerson, October
5, 2012, father of **SARENA DICKERSON Burch**

CHRISTI RIDEOUTTE Dunn and
husband John run the family's

commercial construction business in Lyford Cay in the Bahamas. **SANDRA SHEAROUSE Morelli** is employed by Capital Group Private Client Services in Atlanta, GA and is responsible for managing its southeast region. **KAKI MANNING Zeigler's** son, Sandford was married in Savannah, GA, March 2012. **JULIE ARMSTRONG** writes she is now a grandmother to granddaughter, MaryClarke. **ANNE BOGGESS Saint's** youngest daughter, Sarah Riley pledged KD at Clemson. Anne went for initiation since she was a KD at Alabama. Anne and husband, Michael, went for Parents' Weekend and met for dinner with **PERRY TISON Wilson** and her son, Caid, who is a sophomore there. Anne and Michael's oldest daughter, Molly, studied in Rome fall semester. **DEIRDRE PEROT Lightsey** retired in 2009 from investment banking with Wachovia Securities and is enjoying "horsing around" full-time on the farm with her husband Frank, dogs, horses and chickens. She is the trail committee chairman for the NC Horse Council and an officer in the Back Country Horsemen of NC. While **JEANNIE DAVIS Powell** and Hartley were in San Diego, CA, they attended **MARTHA ANDERSON'S** church where she is an Episcopal priest and Martha was preaching that Sunday. Jeannie was really impressed with Martha's preaching. **LEE ULLMAN Hutson** spent the first weekend in November with **MARIAN POTTS Foster** at her condo at the King and Prince in St. Simons, GA. **BARBARA DUFFY Feemster** was supposed to join them, but couldn't because Barbara and Dwight were hosting their

children and friends at the Rock'n Roll Marathon that weekend in Savannah, GA.

1979 Next Reunion:
2014

CLASS REPRESENTATIVE

Margaret Horne Darr
234 Beechwood Drive
Spartanburg, SC 29307
864.583.7464
buddymoonshine@charter.net

Thanks to **NANCY BAIN Coté** and **SARAH MERCER Chatel** for gathering money and news. **HANNAH STEWART-Gambino** and **MILDRED RAGIS Roche** represented '79 at Founders' Day as featured speaker and Unsung Hero, respectively! **MARNIE LAW George**, **JANE MURRAY Massey**, **AUSTON CHERRY** and **KENT WALTERS Pryor** reunited recently in Montgomery, AL. **JAN COLE Daulton** (Dallas), **PAULA WATKINS Jacks** and **JAIMIE**

NELLIGAN Hardin (Atlanta) each report milestone anniversaries and successful children. **KATHERINE FRAGASSI Ezickson** is busy in New York, **RACHEL STANLEY MacBain** stays in touch with **LEESA LAND Ray** in Decatur, AL and **BETSY MCGHEE Johnston** in Fort Mill, SC, close to **SUSAN JONES**, who was spotted in Charlotte, NC last year! **SUZANNE SMITH Bare**, a dean at Salem College keeps up with **LELIA FREEMAN Byars** and **SUZI EARLY Via**. **JAMIE MCGILL Kornmeier** lives in Chicago, IL and is quite a weaver, while **VERA LYNN KELLUM Sheets** loves teaching music in south Alabama! **GEORGIA MILLER** teaches worldwide and in Birmingham, AL, focusing on English language learners. She invites anyone close to visit at Montreat when she is there. **HUNTER MCCLINTOCK Bell** never changes, in Greenwood, SC working, volunteering and caring for others. **PAM KOERNER Neely** and husband are in Roebuck, SC, busy working and empty nesting! **ANNE CUSHMAN Prettyman** is setting world records in triathlon events! Nancy Coté and **MARGARET HORNE Darr** had FUN seeing **ROBIN BROWNLEE Giddings** at a Sumter wedding! Margaret's daughter called one evening, "Mom, did you know **JEAN ARTHUR Hungerpiller** at Converse? I think she was younger than you!" So Jean and Margaret caught up at a wedding where both of their daughters were in the wedding party!



"Cover to Cover" event hosted by **Nancy Bain Coté '79** and **Melissa Daves Johnson '69** with alumna author **Michel Stone '99 MEd** (far left).

Converse Family

The adorable daughters Alexandra (now 8) and Catherine Elizabeth (now 5) of **JULIE TANNER-Leake '93**



LYNN HARRISON Johnston '66, with her husband, son, daughter-in-law and granddaughter at the Alumnae Day at the Riverbanks Zoo in Columbia, SC.



MELISSIA HEATHERLY Brannen '03, and her family also enjoyed Alumnae Day at the zoo.



Class of 1986



MANDY MULLINAX Ohler '03, '05 MEd, a science teacher at Gaffney High School, SC, wore her Red All-Stars, pearls and Converse College Alumna t-shirt for college application day at her school.



A. W. Leland and **DAISY BARRON Leland '58** with **ANNE FERGUSON Caughman '58**



Album

You can submit photos for the Converse Family Album through your class representative, send them to the Office of Alumnae and Donor Relations or email photos to nancy.gage@converse.edu. Please include caption information. Digital photos should be 300 dpi.

Class of 1981 enjoys time together at Pawley's Island at the home of Jane Rinehart Crosby. Left to right: **JANE RINEHART Crosby**, **RUTHIE JONES Soliday**, **SUSAN MCDONALD Davis**, **GAY PARKS Dilz**, **ANN MOORMAN Price**, **CAROL UPCHURCH Campbell**, **MARIANNA MACINTYRE**, **JULIE MARTIN Hanes**, **LIBBY CAMPBELL Patterson**



Class of 1986



Jeremy Watford and **NICOLE DUMOUCHEL Watford '10** (above) and with Converse friends, **SAMI HOVEYDA '12**, **NORA NASSARI '08** and **ELIZABETH POWELL '10**



REUNION2012
Class of 1982

1980 

CLASS REPRESENTATIVES

Holly Holstein Caprell
864.963.5857
holly.gcyo@gmail.com

Liz Hughes
704.364.5205
ncclassicdesign@aol.com

Margaret Craig Schafer
404.705.8562
ga.schafers@comcast.net

IN MEMORIAM

PHYLLIS HORNE CRAIN, MEd,
July 18, 2012

SYMPATHY

Lucy Harper Grier, July 8, 2012,
mother of **MARY GRIER**
Wheless

Neva Langley Fickling, November
18, 2012, mother of **JANE DRU**
FICKLING Skinner

Tapp Latta Hancock '57, March
18, 2012, mother of **TAPP**
HANCOCK

Jane Jordan Kimball, January
6, 2012, mother of **ALISON**
KIMBALL

Are you on Facebook? Check out our class page. It's a great way to communicate with your Class of 1980 friends! **LAURA SHEARIN** is living in Flagstaff, AZ and working for Grand Canyon National Park, helping to oversee commercial operations (think: hotels, mule rides, river running). **LIZZ TOPP Klammer** received the Texas Medical Association's middle school Science Teacher of the Year for 2012 award! **TERRY GARDNER** is enjoying her career of travel journalist, writing for the travel sections of the *Los Angeles Times*, *Chicago Tribune*, and *Dallas Morning News*. Visit her website www.terrytravels.com for travel tips and resources. **ANN MARION Lorenz** was recently named Great Ambassador for University Hospital in Augusta, GA for her work in the OT and Speech department! She and hubby Bob celebrated their 25th anniversary with a trip to Europe this fall. Ann shared that **SUSAN SECORD Marion** and family had a great time in England visiting with daughter Laura, a Wofford



student, who spent last spring semester in London. **MARGARET CRAIG Schafer** has co-authored a book for caregivers of infants and toddlers that was published last year! Margaret heard from **FANNIE KLEITCHES Kotsianas** lives in Knoxville, TN with hubby Jim and is a curriculum coach with Knox County Schools. **HOLLY HOLSTEIN Caprell** is busy as Executive Director of Greenville County Youth Orchestras. This summer she was the Musical Director for the show "Beehive" at Centre Stage in Greenville, SC.

1981

CLASS REPRESENTATIVES

Cornelia Christian
3021 Cardinal Place
Lynchburg, VA 24503-3301
cornelia.christian@comcast.net

Libby Campbell Patterson
18 Widewater Road
Hilton Head, SC 29926-2064
843.342.2580

Marianna MacIntyre
864.597.1622
mommaisin@charter.net

IN MEMORIAM

KATHERINE ELENA DOBBINS
MEd, March 24, 2012
SARAH HUGHES Lineberry
MEd, April 25, 2012

SYMPATHY

J. Ross Albert, '64, MMed,
December 14, 2012, father of
CATHY ALBERT Terrell, MMed
Jack Smyser Folline, March 23,
2012, father of **LANIE FOLLINE**
Epting
Isola Sherrerd Hartness,
December 14, 2012, mother of
SHERRERD HARTNESS

Anna Jean Sharpe Moorman,
March 14, 2012, mother of
ANN MOORMAN Price
Reid Terrill Johnson, March 4,
2012, husband of **NANCY**
STUCKEY Johnson

Did you know that **MARIANNA MACINTYRE** is one of the newest Converse employees? Stop by Wilson Hall to see Marianna when on campus. Hope everyone followed **SALLY JETER Hammond** on her biking adventure in Africa—awesome! A big group of red devil sisters got together on Mother's Day weekend—compliments of The Inn in Manchester, VT, with **JULIE MARTIN Hanes** and husband Frank. Those in attendance included Marianna MacIntyre, Sally Hammond, **CORNELIA CHRISTIAN, ANN MOORMAN Price, JANE RINEHART Crosby, AMY WARREN Beaty, SUSAN MCDONALD Davis, MERRY CARMICHAEL Trask, CLAUDIA SIMPSON Hapak** (both skinny minis—run for miles and miles), **CAROL UPCHURCH Campbell, SALLY HERLONG** and **LIBBY CAMPBELL Patterson**. Keep up with **DANA THOMPSON Bostian** and **KIM CARTER Johnson** on Facebook. **NANCY HORNE Vetter's** daughter is an event planner in Atlanta, GA. **KIM WAUGH Gravlee's** daughter married this past March. Kim and Marianna are proud to announce they were able to stay up with friends to ring in 2013 in Sparkle City. **MARY LELLA POSTON** was spotted at the Wildflower Bakery in Saluda, NC getting ready to celebrate her birthday. **GLENN SUMMERAL** sends howdys from California and says her company is matching her red devil pledge. **KAY GRAY** sends her hellos from Columbia, SC. Thanks girls for

stepping up and giving! **LEIGHANN LITTLEJOHN** lives in Columbia, SC and will visit Converse soon, we hope! **BETH IRWIN** lives in Florida and has been a Captain in the Army (wow!) Big hoorah to Sally and Marianna for reaching the most alumnae in the 2012 TAPP campaign! Let's get those donations in to Converse, Red Devils!

1982 

CLASS REPRESENTATIVE

Linda Still Winegardner
13412 Robert Walker Drive
Davidson, NC 28036
704.965.4449
lwinegardner@bellsouth.net

SYMPATHY

Frank Darrow Peebles, Jr., March
10, 2012, father of **EDITH**
PEEBLES
Ann Ingram Whisnant, November
9, 2012, mother of **CAROLINE**
WHISNANT

Great 30th reunion weekend! Involved in planning the weekend were: **NANCY SMITH Gage** (alumnae information coordinator) and **BECKY NUTTER Cassidy** and **HOLLY BEACH Hussey** (class reps). **PHYLLIS PERRIN Harris**, executive for Wal-mart Stores Inc., spoke at the Founder's Day convocation and **CAROLINE WHISNANT** from Wiesbaden Germany performed at the Alumnae Recital. Caroline returned to campus in January 2013 for a recital and a master's class. **TONI GUZZI Erdman** is staying busy as business administrator of their dental practice in Deltona, FL, with her three handsome sons, and with her studies for a master's degree in pastoral studies. **MIMI GINTER Hallman** left Bank of America after over 20 years to care for her daughters, Anna and Katy (who recently graduated from high school in Greenville, SC with **DENA STONE Benedict's** son). **CONNIE PEASE Happell**, a minister in Overland Park, KS, is excited to reconnect with the south since her son Eric is now a freshman at Davidson College. **EMELINE THOMASSON Loughlin** writes from Newman, GA where she is married to her "sandbox

CONVERSE.EDU

sweetheart," a mom to her two sons (ages 21 and 17) and enjoys her work at a needlepoint shop. **LIBBY HEBERTON Cornwell** is working hard in Atlanta, GA and is enjoying the phase a lot of classmates are entering where both kids have graduated from college and are "off the payroll." **JANE HOYT Leidlein** practices Ophthalmology in Lake Jackson, TX. Jane, her husband Hugh, and her two children (Chris and Katherine) travel to Mexico with the rotary club to perform cataract surgeries, something they enjoy doing as a way to give back. Please join Converse College Class of 1982 on Facebook!

1983  **30th Reunion: April 12-13, 2013**

CLASS REPRESENTATIVES

Barbara Lindsay Hines
4400 N Cooper Lake Road SE
Smyrna, GA 30082-4600
robbarb@bellsouth.net

Lou Pittman Lindsey
864.573.9191
lou@eatatwades.com

ELIZABETH MACDONALD Dunn had a very busy spring last year with Jay graduating from college and Cole graduating from high school—in the same week! Her daughter Adelaide has her driver's license so this only adds to the excitement. **LINDA SINANIAN** is on the faculty at the Aaron Copland School of Music, Queens College in New York. She teaches violin and viola primarily to master's students. Her husband, Jeffrey Forden, who also is a professional musician (the regal French Horn) and she run a traveling music festival named Protégé International and they invite students ages 14-26 to study their instruments in an intensive boot camp-like challenge. Recently, Linda's ensemble, Chamberosity, gave the World Premiere at Lincoln Center of a trio for horn, violin and piano written personally for them! **BARBARA LINDSAY Hines'** daughter, Lindsay Kate, is attending Georgia College & State University majoring in special education. Daughter Tori

CONVERSE.EDU

is a senior in high school, so is in the throws of college visits etc. **ALICIA CREMINS Coleman** is a Librarian at Liberty Elementary School in Centreville, VA. Everyone should have received a notice about reunion in April. PLEASE try to arrange your schedules now so that we can have a large group there. Remember that we have a Facebook page for the Converse Class of 1983, so you can post info there as well.

1984 **Next Reunion: 2014**

CLASS REPRESENTATIVES

Jody Cole
308 Jones Street
Ukiah, CA, 95482
wildfair@aol.com

Lynn Gully Orlando
7205 Mira Mar Place
Wake Forest, NC 27587
lynn.orlando@magellancharter.org

Kevin Jenkins Plonk
3044-C Misty Harbor Circle
Cramerton, NC, 28032
kjplonk@yahoo.com

SYMPATHY

Jack Smyser Folline, March 23, 2012, father of **EMILY FOLLINE Mikell**

This is how the Class of 1984 celebrated their milestone 50th birthdays: **KIM WHITE O'Quinn's** son, daughter-in-law and parents threw a catered party for her with a DJ who played wonderful 80s music complete with 150 friends including **MARY MILLING Alexander**, **LOU SPRINGS Smith**, **LAURA CAMPBELL Brown** and **JAN COTTER Jenkins**. **JODY COLE** danced and sang in Africa with 21 US friends and four South African friends. **MINDY MOORE Barker** is grateful to be 50, healthy and blessed in so many ways. **JULIE ANN BAGGS Boardman's** husband and friends put on a fabulous soiree complete with Veuve Clicquot and great music. **CARA LYNN DESERN Cannon's** husband Chris flew their three children and eight high school friends to Cumberland Island, Greece for a surprise birthday bash.

LYNN GULLY Orlando's husband surprised her with a trip to Napa with friends and many private wine tastings. Lou Springs Smith had lots of friends to help her celebrate. **RENEE RANKIN Jones** participated in Art Lessons. **LISA HOWARD Morris** celebrated on Anna Maria Island with **CAROLYN MALONE Buchanan** and **SUSAN ELDERS Alders** (she also dined with **JENNIFER COHENOUR Harrison**). **ALLISON OWENS Stanland** celebrated happiness and independence on her 50th; **ALLISON SUTTON Fuqua** had a 50th Bash/Pig Pickin'/Pool Party. Her husband Randy is one week older than her so they both had the big 50th. They had the David Dyer and the Crooked Smile Band from Raleigh, NC to perform while all were dancing the night away.

1985

CLASS REPRESENTATIVES

Krisila Newman Foster
864.814.4476
krisilafoster@charter.net

Vandy Major McFaddin
201 Clamp Road
Blythewood, SC 29016-9751
vmcfaddin@bellsouth.net

LeAnne Rowland O'Donnell
901 Willow Oak Court
Nashville, TN 37221-3985
615.673.6302

IN MEMORIAM

LESLIE MARIE SAPP,
November 28, 2011

SYMPATHY

MADGE GRAYDON Major '45,
September 30, 2012, mother of **VANDY MAJOR McFaddin**
Betty Glenn Rowland, April 11, 2012, mother of **LEANNE ROWLAND O'Donnell**

HAPPY SMITH Mason's middle son Elliott and her husband, Mike were on college campus tours this summer as well as football camps at Wofford, Furman, Harvard and Yale. We would love to have him in Sparkle City! **LICI HALFIDE Baird** and husband, Tom, are busy with their band, Baird Souls. They perform all around MA as well as on the beach in Rhode Island.

CELLY PADGETT Kahn's daughter, Celly Marshall, is a senior at Converse and welcomes any 85ers who want to tour the new apartments on campus. She is living there this year. The Class of 1985 now has three members on the Board of Trustees at Converse: **ELLEN LANFORD Asherman**, **DEADRA JEFFERSON** and now **JAYNE REUBEN**. Congratulations to Jayne! Jayne Reuben and Janice Morrison Wilkins '86 enjoyed breakfast at the Farmer's Table in Spartanburg with **FLORIA THOMAS Washington**, her husband Howard, and children Malcolm and Kamilah who were in town for a short visit that included a tour of the Converse campus. Floria just completed her first year in seminary. **KRISILA NEWMAN Foster** retired after 27 years of teaching in Spartanburg School District Two (26 of those years at Boiling Springs Junior High School). However, after only two months of retirement, she joined the faculty at her daughter, Parker's school, Spartanburg Christian Academy.

1986

CLASS REPRESENTATIVES

Kathryn Donald Shook
105 Delmar Terrace
Birmingham, AL 35213-3112
kdshook@att.net

Catherine Pittman Smith
215 E Edgewood Drive
Birmingham, AL 35209-3913
205.871.3340

Julie Staggs
571.970.7895
jstaggs4@gmail.com

SYMPATHY

Allan Cheney II, March 15, 2012, father of **PATRICIA L. CHENEY**
George Evans Mitchell, May 22, 2012, father of **HELEN E. MITCHELL**
Judge James C. Paine, March 7, 2010, father of **JO ELLEN PAINE**

DEBBIE MCCRORY Pannell teaches fifth grade at a magnet school in the Bay Area, CA. Last February, **ELIZABETH**

REUNION2012
Class of 1987



JONES Beal, LAURA JENNINGS Schulman, LISA HOLCOMBE Shellhaas, MONICA ROWLAND Loving, JILL RADFORD Ferrell, JENNIE PLAYER Lambe, KATIE GIBSON Fritze, HUNTER STABLER Cantey, MARY BOOKE Kerfoot and LAURA GREEN Hollowell met at Mary's lake house for a fun weekend. Both of Laura Green Hollowell's girls got engaged on the same day, so is busy planning two weddings for 2013! **PAGE LACY Mitchell** and family moved back to Sugar Hill, GA. **AMY TIBBALS Morales** is the President-elect of the Alumnae Board. **KATHY WEBSTER Davis** and family have moved to Lake Wylie, SC. **LIBBY ANNE KEPLEY Inabinet** is the President of Providence Hospitals Development Foundation. **CATHERINE PITTMAN Smith** is working on a coffee table book on Beaufort, SC, based on the memories of Jeanne Aimar growing up there. **JULIE STAGGS** is the managing principal with Global Education Practice for Korn/Ferry International, Leadership and Talent Consulting. Half way through with her doctorate, Julie enjoyed a trip in June to Haarlem, Netherlands for school, then 10 days in Paris with Lesa Underwood '90.

Charles Willard Minch, June 23, 2012, husband of **CATHY MCKEEN MINCH, MEd**

Thanks to **LYNN DYE Smith** for planning such a great reunion weekend! **ANNE TRENNING, KAREN WACKER Hampton** and **RUTHIE MCCORMACK McDaniel** performed beautifully in the alumnae recital. **KENDA HOLT Rusevlyan** (Florence, AL) is an advisor at the University of North Alabama. **STEPHENIE SYER Gwaltney** (Huntsville, AL) works at a drug store, and is an advocate for a gluten-free lifestyle. **Dr. MARY REDMOND Hutson** is a professor at Duke. **RACHEL HEAN Dobson's** (Macon, GA) stepdaughter got married in Italy. **REBEKAH JENNINGS Murphy, SHERRIE MOSS Board, JULIE NORVILLE, VALERIE RODMAN Hoss, TERESA GAGNON Maino and CLARKSON PARENT Bowling** live in the Atlanta, GA area. **ELIZABETH FINLAY Vingi's** and **NANCY DAVENPORT'S** children attend the same school in Charleston, SC. **ELIZABETH SHELTON Roddy** will live in Kenya for the next few years. **BETH WOODS Sessums** (Tampa, FL) teaches kindergarten. **ALLYN TALBOT Johnson** (Tryon, NC) works at an art gallery. **LAURA CALK** (Aspen, CO) is a hotel concierge. **KATHRYN SCHILLING-Oakes** (Knoxville, TN) works as an artist. **DAWN PRIDGEN** teaches and coaches at Lexington (SC) Middle School. **BECKY SEEGER Eller** moved to Ohio this summer. **ANDREA HOOVER Burden's** family has moved to Cumming, GA. **LETTE O'SHEILL** (Hilton Head Island, SC) is an ordained minister. **JOY DAVIS** and Ron Blakley married on June 20, 2012. **MOLLY LEVY Campbell** is a Guidance Counselor for Aiken County Schools in Aiken, SC. Congratulations to **HOLLY MANLY Gosnell** on earning her MAT at Converse in July 2012.

1987 

CLASS REPRESENTATIVES

Janet Bean
402 South Cherry Street
Seneca, SC 29678, 864.886.8108
beanj@clemsun.edu or
JanetLBean@yahoo.com

Adele Penland Boyce
104 Emory Road
Spartanburg, SC 29307
864.583.8512
emory104girl@bellsouth.net

Martha Lynn Mercer Gaskins
213 South Farr Avenue
Andrews, SC 29510
843.264.5388
mlgaskins@gmail.com

SYMPATHY

Dannie Small Hean, April 18, 2012, mother of **RACHEL HEAN Dobson**
Elissa E. Bouchillon, April 18, 2012, mother of **ASHLEY KILGORE Wimmer**

1988  25th Reunion
April 12-13, 2013

CLASS REPRESENTATIVES

Kristi Klim Holler
900 Raven Drive
Rock Hill, SC 29732
jandkholler@comporium.com

Alice Fuller Littlejohn
225 Randall Street
Greenville, SC 29609
alkeulj@charter.net

IN MEMORIAM

JULIA DARGAN BRADSHAW,
February 28, 2012

LINDA LAYMAN Redding's husband Dave sent Linda, **ASHLIN BLANCHARD Potterfield, GINNY AGEE Speirs** and **BECKY DUBARD Grantland** to Las Vegas last year for her birthday. They had a grand time: delicious meals, good wine and nonstop conversation and laughter. This year, he sent Linda and Ashlin to PARIS! This spring, **CINDY HUME Kirschner** spoke at Converse at a math and science symposium. She was invited by her former math and science professors. Becky DuBard Grantland was able to spend the day with Cindy. It was their first face-to-face visit since Becky's wedding reception in 1993! What a blessing to have Converse friends with whom we can always pick up where we left off! They sat on a bench near their old dorms and talked about friends and kids. Cindy's oldest is looking at colleges, and her youngest just turned three! In May, Becky had lunch with **LATAN CHAMBERS Cox** in Columbia, SC. Becky is taking computer classes to update her technology skills. Congratulations to **CATHERINE REEVES JONES, MEd** and **Fredrick Flynn Stork, Jr.** on their wedding on March 9, 2012. Congratulations to **JOHN ERIC RATTERREE, MEd** for earning his EdS at Converse in July 2012. Connect with classmates on Facebook by joining the group "Converse College Class of 1988."

Our old group recently "migrated" to a new group, so you may need to re-join if you have been away for awhile.

1989 **Next Reunion:**
2014

CLASS REPRESENTATIVES

Joy Johnson Dascalakis
1850 N Elm Street
Greensboro NC 27408
nisajoyj@yahoo.com

Wallace Davison
1720 Wandering Way
Charlotte, NC 28226
wallacedavison@yahoo.com

Rawles Terrell Kelly
3139 Shillington Place
Charlotte, NC 28210
rawles153@att.net

SYMPATHY

Jeanne McMahon Turner,
May 26, 2012, mother of
AMANDA B. TURNER

ELISABETH KINNEY McNiell's daughter Margaret Jane attended Camp Seafarer with the daughters of **ELIZABETH MCKEE Huber** and **BARTLETT SPENCER Bassett** and Elisabeth's son Light attended Camp Sea Gull with the sons of Mary McDaniel Ridgeway '90. Elisabeth is current President of the Alumnae Association, which she is thoroughly enjoying! **MARGARET BOYD Franklin** completed yet another cross-country drive, this time leaving Alaska behind and moving to Kansas. **KIM JACKSON Cameron** visited Las Vegas with **ELIZABETH HYATT Robinson**, but they wouldn't tell us anything else... **RAWLES TERRELL Kelly** checked

Hawaii off her bucket list this summer, reading *Unbroken* while at Pearl Harbor, wow. **SHAY MONTGOMERY Greene** enjoyed a very special June weekend in Topsail Island, NC, for which **MARTY TEAM Garrison** sent some lovely flowers from a bunch of devils. Congratulations to **JOY JOHNSON** on her marriage to Demetri Dascalakis on December 19, 2011 and to **SHAY MONTGOMERY** and Jeff Greene on their wedding on June 16, 2012. Joy Dascalakis is learning Greek. **ANGELA WEATHERED Halstead** and Clifford welcomed Clifford Sydney Halstead, Jr. on August 15, 2012. Marty Team Garrison is the Owner of Paisley and Paper in Greenville, SC. Go ahead and mark your calendars for April 2014...it's our 25th Reunion! See you all there!

age class of second and third graders. **LESA UNDERWOOD**, our traveler, has been touring Haarlem, Netherlands and Paris! Lesa has joined Empire Sports Management as Event Program Manager. **DEBBIE CURRIN Conner** enjoyed a visit at the beach with **WINNIE BROWN King** and **SHERI STARNES Balcerzak**. Debbie has a new job at CCU as the Vice President of Student Affairs. Her daughter went on her first international mission trip to Kenya for two weeks. **AMY BOYCE Louthan** and husband Keith are in Wilmington, NC, where he is a pastor at Wrightsville Beach Baptist Church. **ROSEMARY GLAZE Sullivan** is an English teacher at Mary Hare Secondary School and College in Newbury, Berkshire, England.

Susannah Gramling Hubbell
166 1/2 Wentworth Street
Charleston SC 29401
Susannah@Susannahgramling.com

SYMPATHY

ELIZABETH NEWTON Lott
'42, September 8, 2012,
grandmother of **GINNY LOTT**

DEBORAH LYNN is Deputy Director of the Social Security Administration in Baltimore, MD. **PAULA SAVIANO Gaskins** completed her EdS at Converse in July 2012. Steve and **LYN MATTHEWS Rehn** celebrated their 20th anniversary in November in Scotland. Their family lives in Germany. Her daughter, Carson has applied and been accepted to Converse. **SUSANNAH GRAMLING Hubbell** had a private wine tasting in October in Sonoma, CA, with the maker of Perception and Melissa Kelly wines by Mark Ray. Mark had his wife, **MISSY TOWE Ray** met them with their two precious boys. And yes, Melissa Kelly is Missy. **ELIZABETH LESTO Zadig** went on a mission trip to the Ukraine with her church, St. Michaels. **PAIGE POOSER Merrill** is an occupational therapist at MUSC and mom to her three children. **MARCY SWAN** has her own interior design company in Columbia, SC. **CINDY JERLES Brown** and Doug lead a marriage ministry at their church in Orlando, FL, called Celebrate Marriage. **MELISSA CARLTON Salko** and her family welcomed their fourth child in June, 2012. Their son, Callan Austin Salko,

was a week shy of his third birthday when they arrived home from China, welcomed by siblings Natalie (10), Neeleigh (10) and Aaron (6). **Mary Grace Ani Elemgren** had twin boys March 23, 2012, Matthew David and Edward Joseph. **KHRIS NIN-Arciola**, husband Dan and son Lucas moved to Holmdel, NJ, just in time for Superstorm Sandy! Their house is fine, but lost trees and had no electricity for 10 days. Kris works for Cigna Healthcare. **MARCI MEADOWS Hyla** and family moved to JAPAN! She would love to see anyone who wanted to brave the trip! **JENNIFER RAE PLIZGA Gravely** has written a romance novel: *The Knight of the Dead*. **KELLI GOSNELL Hardigree** teaches kindergarten at Pine Street Elementary School in Spartanburg, SC. Join us on FaceBook at Converse Class of 1992 to share your news.

1990

CLASS REPRESENTATIVES

Rosemary Glaze Sullivan
441.256.7714
mamiesullivan@hotmail.co.uk

Cheryl Owens Verdell
864.814.0440
dverdell@bellsouth.net

IN MEMORIAM

CRYSTAL BELL Selvaggio,
December 26, 2012

SYMPATHY

ELIZABETH NEWTON Lott
'42, September 8, 2012,
grandmother of **CONNIE POPE Thackston** and **CANDICE SHEPPARD**

Frank Benjamin Robards, Jr.,
December 4, 2012, father of
MARY KENYON ROBARDS Jones

CATHY ANDERSON Henry and **MIRIAM DRENNAN** had a wonderful visit in Nashville, TN when Cathy took her daughter Natalie to basketball camp in June. **DEBORAH STANFORD Harris** and family are in Raleigh, NC where Deborah is Manager of Bankruptcy/Compliance Attorney Billing at Wells Fargo Home Mortgage. **CAROLINE WEST McDowell** is teaching at Clemson Elementary in a multi-

1991

CLASS REPRESENTATIVES

Dorsey Daugette DeLong
404.609.9405
teamdelong@gmail.com

Dianne Prince Swann
711 Lake Drive
Snellville, GA 30039-6635
770.929.0077

IN MEMORIAM

KELLY JANE FELMET Long, MEd,
March 10, 2012
DOROTHY ANN HORTON, MEd,
September 21, 2012

SYMPATHY

William Jackson DeBrule, June
22, 2011, father of **ELIZABETH DEBRULE Wilkinson**
J. Givens Young, March 26, 2012,
grandfather of **JENNY HOWARD**

Congratulations to Lee and **TINA FULLER Abbott** on the birth of son Charles Abbott on March 26, 2012.

1992 

CLASS REPRESENTATIVES

Cindy Jerles Brown
9823 Palmetto Dunes
Ct. Orlando, FL 32832
cindy@fauxtasticinteriorsinc.com

20th Reunion:
April 12-13, 2013

1993

CLASS REPRESENTATIVES

Maureen Zeeff Dunn
109 Watershire Dr
Irmo, SC 29063
mcdzunn@aol.com

Jane Manning Hyatt
415.655.9220
converse1993@hotmail.com

Candy Moore
704.999.5617
epmoore1993@yahoo.com



SYMPATHY

Jerry Delane Creech, September 19, 2012, father of **RENA CREECH**

Louise Jordan Earle '37, June 21, 2012, grandmother of **REBECCA EARLE Talbert**

Charles Fisk Hyatt, September 4, 2012, father of **JANE MANNING HYATT**

Ralph Louis Iannazzone, Sr., May 28, 2012, father of **CATHY IANNAZZONE Ellett**

Join us on Facebook to keep up with our class' reunion plans. **KATHERINE RUSSELL Sagedy** married Mike Selvy on May 5, 2012. **CANDY MOORE** is a graduate of Leadership of Atlanta and a graduate of The Links, Inc. Scott Hawkins Leadership Institute. **CATHY IANNAZZONE Ellett** is currently serving on the Board of Visitors and her oldest children swim at Converse every day. Cathy ran into **SUSAN KITCHENS McMahan** and Candy Moore at the Peach Bowl in Atlanta. **JULIE MCCOLLOUGH Delaney** earned her MEd in administration and supervision from Converse in July, 2012. **BETH STRICKLAND** has completed two marathons and competed in her third this January, 2013! **KRISTEN KEIDEL Frericks** and her family have moved to Ft. Collins, CO. **SHANNON PERDUE Atwell** has been appointed the Director of Head Start for Community Action of SouthEast West Virginia! **CANDACE NICHOL** moved to Charlottesville, VA and works with Stryker Orthopedics as a foot & ankle specialist. But, her biggest news is that she found our beloved **VIRGINIA BROWN!** Hope Virginia will make it to our reunion this year! **JULIE TANNER-Leake**, after 11 years of marriage, two children, seven moves, six different duty stations and three deployments, has settled in Southern Maryland with her family following her husband's retirement from the US Navy. **TRISHA STUBBLEFIELD** received the Cottey College Class of 1960 Excellence in Education Award in May 2012. Trisha has taught English and Women's Studies at Cottey since 2001 and she has recruited several of their associate degree students for Converse!

1994

Next Reunion:
2014

CLASS REPRESENTATIVES

Kristen Harris Cavin
615.591.6795
kristencavin@comcast.net

Holly Miller Smith
301.869.3522
hollybahamas@gmail.com

Mary Ames Plowden Voyles
864.585.8591
MaryAmesV@bellsouth.net

SYMPATHY

Benjamin Robinson Pickens, Jr., April 22, 2012, husband of **DIANE VERMILLION PICKENS**, MMus

Bill and **SARAH RUEFF Ryan** welcomed daughter Gabrielle Ann Ryan on June 18, 2012. **MELODY MOORE BRADLEY** and **PATRICIA ELLISON FARMER** completed their Master's in education at Converse in July 2012.

1995

CLASS REPRESENTATIVE

Laura Kate Moore Garner
101 Cooper Street Apt 2E
New York, NY 10034-2328
646.483.3878
laurakatem@yahoo.com

IN MEMORIAM

DEBRA THRIFT THOMAS, MEd,
June 7, 2012

KELLY WUZZARDO is very busy with work but finds being Director of Education and Outreach Initiatives at the Shubert Theater extremely rewarding. She is also involved with the arts magnet high school next door to the theater where she is managing their arts spaces for rentals, providing tech support, and teaching students about about technical theater through internships and mentoring. **JOY GRIGG Garner's** family opened a new business on Main Street in Spartanburg called Twisty's Yogurt and Smoothies, a frozen yogurt and smoothie shop. It is located next door to their other store, Garner's Natural Foods. Thanks to all our Converse

classmates who have come out to support their business. Joy also visited with **MICHELE BURNS Fowler** and **MEGAN BAXLEY Monk**; they had a fun day at Harmon field in Tryon, SC and enjoyed a picnic with their children. Congratulations on the arrival of Ellison Elizabeth Getz on July 21, 2011, daughter of Keith and **LAURA BENNETT Getz!** Josh and **PAGE SPILLANE Fowler** welcomed son William Jeffrey Fowler on September 5, 2012 in Knoxville, TN.

1996

CLASS REPRESENTATIVES

Pam Hughes Foster
864.254.0853
pam@usmedals.com

Jenny Williams
707 Rutledge Street
Spartanburg, SC 29302-1455
Jennywilliams_99@yahoo.com

Congratulations to **KELLI LYNN HARRIS** (MEd) and Christopher Martin Mesardjian on their wedding on November 5, 2011. Congratulations to **CATHY M. WARD** for earning her master's in education at Converse in July 2012.

1997

CLASS REPRESENTATIVES

Heather Eldridge
803.469.6560
heldridgewh@yahoo.com

Catherine Alexander Girard
1812 Savage Drive
Plano, TX 75023-1835
crgirard@gmail.com

SYMPATHY

Harry Caldwell Johnson, Jr., April 28, 2012, grandfather of **PERRIN SPIGENER Marchionne**

The Class of 1997 was well represented at our 15th Reunion, where a good time was had by all! Kudos to **SHANNON GOSNELL Bishop**, **CATHERINE ALEXANDER Girard** and **JENNIFER COGGINS Reese** for planning our class dinner and serving as our class reps the last five years! **KRISTIN BRADSHAW** is the Director of the Academic Center of Excellence and Assistant Professor of Liberal Arts at Pacific Northwest College of Art in Portland, OR; her first book *Apologies* is forthcoming from Burning Deck Press. As chairperson for the Spina Bifida Association of Central Florida, **NICOLE VAN NOTE Gower** is busy planning the second-annual WALK-N-ROLL fundraiser. After having two sons, Nicole and Scott adopted two daughters with Spina Bifida from China, so this cause is near and dear to their hearts. **MELISA FEUERHAHN Woolf** is taking the internet by storm selling infant hats. Dr. **CAREY USHER** is an Associate Professor of Sociology and Director of First-Year Experience at Mary Baldwin College in Staunton, VA. **JULIA WITTSCHEN-Price** and



BIG SIS LI'L SIS HEROS

One of Converse's most beloved traditions, Big Sis/Li'l Sis week, takes place over a span of four days. After much anticipation, Juniors find out who their "littles" will be and busily plan baskets of goodies, secret messages and sisterly pampering. Freshmen devour their daily treats hoping for some small clue of who their Big Sis could be.

The Class of 2014 was no different than the "Bigs" who came before them—with one exception. These upperclass students were welcoming the second largest class of new students in over 10 years! This growth in students meant that Juniors would need to adopt three or four

The Office of Alumnae and Donor Relations sent an email blast to all alumnae in our database with updated email addresses (only about 40% of our alumnae) asking for a gift of \$50 to cover the cost of sponsoring one little sister. Over 30 alumnae responded to the Juniors' plea for help, with some alumnae offering to sponsor up to four new students! Every Junior who wanted to have a little sister was able to adopt one and many who didn't think they would be able to afford to participate in this special week were able to receive a little sister! THANK YOU!

little sisters in order to make sure each Freshman had a Big Sister. One of the Junior class officers, Lindsay Smith had a brilliant idea—ask alumnae if they could sponsor a student in order to ease the financial burden of this tradition. "We might only get a few responses" she said. "But any little bit could help."

Would you like to sponsor a student for BigSis/Li'l Sis? Email carrie.coleman@converse.edu.



Briana Bateman '14 with her three littles at their "reveal." Texts to each other share the bond they formed.

John Price married on April 14, 2012. Julia is the Community Liaison and Advocate for the Deaf/HH of the Low Country, Breaking the Sound Barrier in Beaufort, SC. Roger and **KATIE FORT Smith** welcomed son Hampton Neal Smith on March 3, 2012. Paul and **EMILY GOWDY Canady** welcomed daughter, Adelaide Ruth Canady, on May 18, 2012. Jonathan and **CHRISTA SMITH Beaufort** welcomed daughter Michaela Elise Beaufort on November 8, 2011. **NAKIA MARTIN Alexander** is the Regional Desk Officer, Central Field Office Investigative Operations for Defense Criminal Investigative Service for the US Department of Defense, Office of the Inspector General in Alexandria, VA. Nakia received her MPM from Georgetown University in May 2012. **DENIA BOMAR Brown** received her EdS at Converse in July 2012. **JENNIFER FARGO DOWIS, AMY LINDNER FAULKNER, PAMELA HAWKINS**

FLYNN received their Master's in education at Converse in July 2012. Dr. and Mrs. Frazier Ward, parents of our late classmate **LEIGH ANNE WARD**, established a scholarship in her memory this spring. Thank you to those who have contributed to our class' efforts to honor Leigh Anne's legacy on campus.

1998 15th Reunion: April 12-13, 2013

CLASS REPRESENTATIVES
Shannon Gordy Haynes
706.333.9347
shannongordyhaynes@yahoo.com

Laura Matthews Pappas
410.667.0203
lpappas@entertainment.com

ANGIE MURPHY has switched careers from banking to being a State Farm Insurance Agent. She and **MARY ELLEN GOFF Conner**

caught up with each other in Greenville in July. **STEPHANIE EASTERDAY Bartuch** sold one of her two chiropractic practices to be able to stay home more with her son, and loves it! **LAURA MATTHEWS Pappas** and **KRISTI HINES Hagood** visited in Lexington, SC in June. **KAREN OUELLETTE** completed the Defense Logistics Agency Corporate Intern Program, Defense Acquisition Improvement Act Level II Certification in Contracting. **MEREDITH NOCK Partridge** received her master's in education from Lesley University in December 2011. Thanks to everyone who was able to give to Converse's Annual Fund. Every gift counts!

1999 Next Reunion: 2014

CLASS REPRESENTATIVES
Stephanie Eldridge Avakian
813.443.6185
flipper913@gmail.com

Emily Harbin
864.529.0462
eharbin@gmail.com

Jennifer Nockels
864.583.5236
nockels@aol.com

Stop by Wilson Hall when you're on campus to see **MC POTTER Mitchell**. MC started working at Converse in November 2012. **BRITTNEE BENESCH Sutherland** and **ERIN ADDINGTON Gaines** attended the wedding of **BRITTANY BINGHAM Bryson** and Phillip Bryson in May in Blowing Rock, NC. Summer Savage '01 married in Greenville, SC with **MARILU BLOODWORTH Metherell** as her matron of honor; attending were **TRICIA BELFORD Rosenthal, CARLA EVANS Lovi** and **MICHELLE FAW Ward. KATIE SCHEUER Hopper** organized and ran a summer intensive outpatient therapy day program for children with severe emotional

and behavior disturbances. **KATY KRUEGER Corbin** started a business called Liquid Wisdom selling tea and promoting healthy ways of consuming, eating, drinking and living in Spartanburg; "like" her on Facebook and follow on Twitter @liquidwiz. Speaking of healthy living, **ANGEL GAINEY Eicher** is looking amazing after her 75-pound weight loss! She credits Weight Watchers and Zumba. **RACHEL HILLS Valencia** lives in Palo Alto, CA and is a stay-at-home mom to Emanuel (2). **JENNIFER LOVETT Rackley** relocated to the Nashville, TN area. **BETH ROBBINS Cooper** and **MARCIE VANCE Porter** got together for a camping trip with their families in Georgia. Matthew and **TRICIA BELFORD Rosenthal** welcomed son Asher Abe Rosenthal on August 25, 2011. Robin and **CARLA EVANS Lovi** welcomed son Evan Oscar Lovi on June 9, 2012. Jonathan and **NATALIE MCDONALD Skipper** welcomed daughter Leslie Seay Skipper on September 16, 2011. Stewart and **ANN MULLINS Johnson** welcomed Alice Mullins Johnson on August 18, 2012. **DENA JONES Addis** earned her master's in education from Converse in July 2012. Condolences to **RAI RAI CHOICE** on the death of her ex-husband, Stacey Watson, who recently lost his battle with cancer. **DAWN CELESTE DECK** is the Director of Planned Giving with the ETV Endowment of SC.

2000

CLASS REPRESENTATIVES

Amanda Crane Cox
864.294.6403
acranecox@yahoo.com

Kiley Rikard
404.520.0868
Kileyrikard@hotmail.com

SYMPATHY

Kathryn Elliot Patterson Williams, May 28, 2012, sister of **ERIN PATTERSON Joye**
Elizabeth Carter Ayres, August 26, 2012, grandmother of **MILLIE POWELL Eggers**

SARAH LUMPKIN Wyatt completed her MSW at East

Tennessee State University. **JUNEL DOXIE** completed the Tough Mudder in Georgia in February and is preparing for future races. **KILEY RIKARD** returned from a trip to Romania, where she swears she left a piece of her heart. **TASHA PANGLE Forshee** is relocating to Savannah, GA from Watchfield, England, where they have lived for the last year. **KERRI TUCKER Powell's** youngest son, Tucker Marion, was born April 22, 2012, joining big brother, Jack. **KELLY MOORE** returned from a wonderful choir trip to Italy, singing in Rome, Florence and Venice! **KATY BEMIS** moved back to New England after being in San Antonio. **ASHLEY ROGERS Atchley** traveled to Jerusalem on a pilgrimage to Israel with their church. **ANNE GORDON JENKINSON** and John Thomas Thompson were married on October 20, 2012. **SHELLEY ELIZABETH HARDIN** married Christopher Lee Hundley on September 23, 2011; Shelley is owner of SASS Consignment Boutique in Winston-Salem, NC. Chad and **ANNALEISE HELM Jones** welcomed son Henry Paul Jones on June 17, 2011. Congratulations to Keith and **SUSANNA KNIGHT Roberts** on the birth of their daughter Millie Byrd Roberts on December 31, 2012.

2001

CLASS REPRESENTATIVES

Erin Stone Wesol
3804 Green Ridge Court Apt 102
Fairfax, VA 22033-2635
erinwesol@yahoo.com

Kristen Bottenfield Willimon
919.401.6741
kbwillimon@yahoo.com

Marion Sibley Yates
949.417.2211
marionsyates@gmail.com

REBECCA CRANDALL and **AMI PRICE** celebrated New Year's Eve in Iceland with their husbands and Rebecca's daughter, Alice. Rebecca Crandall, **STEPHANIE LIVESAY Winkler** and **MARYEAH JAGER Kramer** got their kids together for a playdate, including lunch at Mellow Mushroom just

down the street from Converse. Ami Price and **STACEY MULLIGAN** visited Egypt in late March along with Ami's husband and sister. **JOCELYN BUCKNER**, who moved from Pittsburgh, PA to Orange County, CA, traveled to South Carolina, Washington, DC, upstate NY and NYC, where she tore up the town with **JENNY WOODRUFF!** Lake Keowee was rockin' in April since **KRISTEN BOTTENFIELD Willimon**, **REBECCA IRICK Gault**, **MILLAN HAYES Edwards**, **ELIZABETH SANSOM Willimon**, **SARAH CHILDERS Whipple**, and **NANCY SCHWARZ Lowry** met up for a weekend of fun in the sun. The Smoky Mountains got a visit from **ERIN STONE Wesol**, **JENNIFER ANDREWS Lambert** and Lorraine Hammond '03 when they met up for family vacation. **LYDIA NOLAND Valdez** held her first voice studio recital, featuring 11 students ranging in age from 8-24. **SUMMER SAVAGE** and Charles Richard Crawford married on May 18, 2012. **CORI WILLIAMS** and Brett McClure married on July 21, 2012. Bryan and **JESSICA HUNDLEY Ray** welcomed son Andrew Titus Ray on July 23, 2012. Glen and **TRISHA PRIESTER Southergill** welcomed daughter Abigail Mary Southergill on August 8, 2011. Brett and Cori Williams McClure welcomed daughter Tinley Paige McClure on September 20, 2012. Congratulations to **ANDREA BOLTZ** for completing her MLIS degree from the University of South Carolina.

2002

CLASS REPRESENTATIVES

Laura Causey
504.813.9413
llcausey@yahoo.com

Kerri Olson
612.730.6087
kerri.olson@delta.com

IN MEMORIAM

BRANDI SARRATT Cobb,
April 27, 2012

SYMPATHY

Dorothy Coggin Shamburger '51,
May 15, 2012, grandmother of
Leigh Anne Mitchell Terry

JAMIE KOESTER Wills, **ELIZABETH OSWALT**, **KERRI OLSON** and **VIRGINIA REDMAN Comer** attended **MELINDA REDMAN Cody's** Baby Fiesta on April 29, 2012, at Monterrey's Mexican Restaurant with Anita Redman. Melinda and Christopher welcomed daughter, Brennan Ray Cody on July 6, 2012. **ALYSON GEERY Flores** and family reside in Mexico City. **MARLEE BECKHAM Marsh** and her family moved to Columbia, SC, where Marlee is the assistant professor of biology at Columbia College. **LAUREN WHITE** accepted a position in risk management with Extended Stay Hotels Corporation located in Charlotte, NC. **MICHELLE HEAPS Wietbrock** married Matthew Wietbrock in January 2010 and



REUNION2012
Class of 2002

Granddaughter's Club

New members of the Granddaughter's Club are new students who have a family member who is a Converse alumna/us.

Please welcome:

Courtney Bramlett (right) with mother **JILL SEARCY Bramlett '90** MEd and father Martin Craig Bramlett '82 MEd, '98 EdS



Anna Robinson; mother **HELEN WILLIAMS Robinson '78**

Lauren Brewer; mother **SHARON HEATHERLY Brewer '06** MEd

Chelsea Sharpe; mother **ROBIN THOMASSON '07** MAT

welcomed son, Jack Matthew Wietbrock on March 30, 2011; they reside in West Lafayette, IN. **BRANDIS CUTLER** married Robert W. Smith on April 28, 2012 and moved to Chattanooga, TN. Connies in attendance were: Denise Butler '01, **BAQIY CURRY Kopp**, **ASHANTE THOMPSON Gilstrap**, Joy Russell '01 and Summer Brooks '00. **ERIN CARTWRIGHT Haddock** and her husband welcomed a baby girl, Elizabeth Dargen Haddock on April 22, 2012. **AMANDA HARMON Thomasson** and her husband, welcomed son, Levi Armstrong Thomasson, on February 9, 2012. **CASEY ROBERTS** married Enoch David on July 28, 2012. Honorary bridesmaids were: **CORINA SPARROW Pickens**, **TABATHA HUSKEY Duckett**, **LASHAUNA MILLS-Whitney**, **LAURA CAUSEY** and Wilesha Davis Wright '01. Craig and **HEATHER MCDOWELL Wagner** welcomed son Colton McDowell Wagner on June 26, 2012. Brian and **SABRA LEONARD Kennedy** welcomed son Ian Kennedy on April 27, 2011. Andrew and **SALLIE LEGARE York** welcomed daughter Estelle Nettle York on February 21, 2012. **PAMALA BLACKWELL DuBose** completed her EdS degree and **JODI SIMPSON WRIGHT** completed

her MEd at Converse in July 2012. Don't forget to checkout our ConverseClassOf2002 YouTube Channel and our Facebook Group Converse College Class of 2002 for updates!

2003 10th Reunion: April 12-13, 2013

CLASS REPRESENTATIVES

Megan Russell Bates
864.231.7687
gem1813@hotmail.com

Melissia Heatherly Brannen
803.338.7999
melissia_heatherly@yahoo.com

Alison Turner Watson
864.472.5809
Alison.watson@converse.edu

REBEKAH GILLESPIE is a traveling physical therapist living in North Carolina. **REBEKAH REED** will finish up her residency in the OU Medical Center's orthotics and prosthetics department, in Oklahoma City, OK. **SELENA GIVEN** works at Goldman Sachs & Co in their private wealth management group in Boston, MA. **NICOLE GIRAUDIN Martinez** and **LAURA JONES Chumley** have traded their careers for long hours, minimal pay, but amazing

benefits as full-time mommies to their little ones. **ALISON TURNER Watson**, **ALISHA WILSON Bridges**, and Tracy Huskey Eggleton '06 spent time with **LEX HERNDON** while she was visiting Spartanburg from Nashville, TN. Alison provides music therapy services to children with special needs in the Lawson Academy of the Arts. **EDEN LYNETTE LONG** and Anthony Hewitt married on March 31, 2012. **SHEENA SPENCER** received her MAT from Rollins College in May 2011 and married Charles Boamah on July 29, 2011 and was initiated into Alpha Kappa Alpha Sorority, Inc. in June 2012. David and Laura Jones Chumley welcomed son James Grady Chumley on July 23, 2011. Keith and **CHERYL MOORE Cruickshank** welcomed son Owen James Cruickshank on June 21, 2012. Ben and **ERIN STRICKLAND McCutcheon** welcomed son John Benjamin McCutcheon IV on April 20, 2012. **MELANIE BROWN** is the visiting Assistant Professor of Mathematics at Saint Michael's College in Colchester, VT. **CHELSEA MARIE JACCARD** married Richard Pearse Kaufman on September 8, 2012. **HOLLY GILMORE Hayes** is the Director of Research Operations at University of Texas Health Science Center in San Antonio, TX. **KELLEIGH GREGORY Powell** received her MEd from Converse in July 2012. Keep updated on reunion plans through our Facebook page: Converse College Class of '03.

2004 Next Reunion: 2014

CLASS REPRESENTATIVES

Casey Addis
864.425.8565
claddis@gmail.com

Kate Carr
404.805.6596
kateecarr82@yahoo.com

Jennie Zehr
864.415.7563
Jennie.04@hotmail.com

SYMPATHY

J. Givens Young, March 26, 2012, grandfather of **HUNTER MARIE GILBERT**

EDNA KATE INGOLD is living in Australia and traveling for the next year. **FRANCES CATE** and Lawrence Patrick Luckey married on April 21, 2012; Frances is in her fourth year of pathology at Vanderbilt. **REBECCA POSTON Creel** graduated from SC BAR's Leadership Academy and the South Texas College of Law, Houston Family Court Trial Institute. **ERIN POSTON Stone** started nursing school in 2012, in homage to the memory of her husband and his three-year battle with cancer. **EMILY GAUDIER** graduated from the New England Law School in Boston, MA. **KELLY DANIELS Lewis** is a licensed professional counselor. **JENNIE ZEHR** teaches gifted and talented students in Charleston County, SC schools. **CASEY ADDIS** is a Foreign Service Officer for the US State Department in Geneva, Switzerland. **LAURA BURGESS Martin** completed her MME from the University of Georgia in August 2012, and is the NICU Ambassador Director for the Graham's Foundation in Smyrna, GA. **KATE CARR** is Operations Manager for Anthropologie, in Atlanta, GA. **JANE MARION Wilson** is the Director of Admissions and Development for the Westminster Catawba Christian School in Rock Hill, SC. **CLAIRE FISHER Woodard** completed her MEd from Milligan College in December 2010. Congratulations to **AMANDA CARTWRIGHT Conschafter** on the birth of Hugh Cartwright Conschafter and to **RAE SCHULTZ Barnes** on the birth of Ellen Arbie Barnes. **JESSICA RENEE SIMMONS** and Richard David Jordan married on April 7, 2012. Lance and **DANIELLE MARTIN Anders** welcomed son Eben Martin Anders on October 18, 2011. Blake and **JEANANNE PATE Maynard** welcomed daughter Anne Pate Sadie Maynard on April 3, 2012. **TIFFANY SIMONS Duncan** and Darrell welcomed daughter Ysa in May 2012! **HUNTER MARIE GILBERT** married Daniel Dubose Ray on November 11, 2011. Congratulations to **MYRA GREEN Taylor** on the birth of twin daughters Lexi Ann and Lily Dale on August 17, 2012!

REUNION2012
Class of 2007



2005

CLASS REPRESENTATIVES

Danielle Moss Beckford
713.446.0351
dsbeckford@gmail.com

Heather Engelmann
864.415.0631
hnelgelmann@gmail.com

Libby Long Richards
919.758.9734
Libby.L.Richards@gmail.com

Congratulations to **JESSICA QUIDLEY Wiley** for completing her EdS degree from Converse in July 2012. John Warren and **NEALIE LITTLEJOHN Floyd** welcomed their son, John William Floyd, on February 27, 2012. Congratulations to **ELIZABETH ANNE SHIRK** and Matthew Richard Howsare on their December 22 wedding in Columbia, SC. Cole and **KIMBERLY THURMOND Alverson** welcomed their daughter Anna Kate Alverson on February 12, 2012. Hans and **DANIELLE MOSS Beckford** welcomed their daughter Zora Elyse Beckford on November 2, 2012! Congratulations to **LAURA ALEXANDER Flack** and Michael on the birth of their twin sons Charles and Alexander on August 10, 2012! **ELIZABETH PATTERSON Moloney** welcomed daughter Eleanor Elizabeth Moloney on April 27, 2012. The wedding of **ELIZABETH ANN Shirk** and Matthew Richard Howsare was celebrated on December 22, 2012.

2006

CLASS CORRESPONDENTS

Mallory Beckett Daniel
864.419.2215
mallorybdaniel@gmail.com

Claire Slocum
828.702.4976
claire.m.slocum@gmail.com

MARY BETH BROWN Earp is helping open a new class for high school aged students with moderate to severe autism and other handicaps at Cox Mill High School. She will work with the Marching Band and direct the Miss Cox Mill High School Pageant. **ASHLEY PIATT** received

her MS in special education May 2012. **ELIZABETH WALKER** earned her real estate license and is working for Coldwell Banker Caine in Greenville, SC. **AMANDA BURGESS George** is the Academic Associate for the Department of Dance at Kennesaw State University in Kennesaw, GA. **HEATHER ELIZABETH CALVERT** and **KIMBERLY SMITH** received their Master's in education from Converse in July 2012. **RAYMOND RAYNARD RUSSELL** and **TAMMY NICOLE SINGLETON** received their EdS degrees from Converse in July 2012. **JONATHAN MCGIBONY DUVALL** received his MEd from Converse in July 2012. **BRELAN RIDDLE Montgomery** served as Matron of Honor at **MALLORY BECKETT Daniel's** wedding to Stephen Daniel on April 21, 2012. **JENNIFER WAHL Settle**, Elizabeth Provence McMillian '07 MMus and Ridgley Beckett '10 served as bridesmaids. **ELIZABETH MAYES Hyatt** read scripture, and **MOLLY STOEHR Moyer** served as a program attendant. During a honeymoon to Greece, Mallory and her husband met up with Sarah Walter DeMeola '08 and her husband in Santorini. Mallory and her husband have moved to Baltimore, MD. **RIONNE LEE RIDGEWAY** and Michael Jason Howell married on March 3, 2012. Stuart and **COURTNEY CLARK Kay** welcomed daughter Olivia Reese Kay on March 19, 2012. Will and Brelan Riddle Montgomery welcomed son William James Montgomery, Jr. on July 10, 2012. Jon and **BROOKE TIMMS Humphries** welcomed daughter Ezri Humphries on August 4, 2012.

2007

CLASS CORRESPONDENTS

Valerie Dowling
803.331.7847
valerie.l.dowling@gmail.com

Deidre Tindal
803.983.0711
deidre.tindal@gmail.com

SYMPATHY

George Richard Atherton, July 24, 2012, grandfather of **JESSICA ATHERTON '07**

KAY SHERER Steele and her husband are living in Roanoke, VA where she works as a nurse. **JESSICA CALLAHAN Sellers** works as an Accountant in Corporate Finance for Michelin North America, in Greenville, SC. **DEIDRE TINDAL** is pursuing her Master's of healthcare administration at MUSC. **STINSON WOODWARD FERGUSON** works with Haynsworth, Sinkler, Boyd PA in Greenville, SC as a second year associate in the Financial Services Litigation, Business Litigation, and Environmental Law practice groups. **LAUREN MAXWELL** works for the SC Governor's School as a Program Coordinator in Outreach and Enrollment. **SARAH TODD** works as an account executive and healthcare specialist with Levine Calvano in New York City, NY. **CARLA KANTARA** graduated with a PhD in cancer biology from the University of Texas Medical Branch. Carla is working on a postdoctoral fellowship and also works as a consultant for Chrysalis BioTherapeutics in Houston, TX. **KATE MCCORMICK**, who plays with the Memphis Symphony occasionally, met and played with Yo Yo Ma in November 2012! **SUMMER KASEL Keever** received her MA degree from the Savannah College of Art and Design in June 2012. **MARY CAROLYN DEBRUHL Frith** and husband Clay welcomed son Reed Thomas Frith on March 30, 2012. Ryan and **AMY LINK Forgay** welcomed daughter Ellie Grace Forgay on December 29, 2011. **GRACE WEPNER Ludtke** and her husband, Tim welcomed their second son, Liam Timothy on June 5, 2012. Grace continues to play the harp professionally, while teaching private harp lessons

and performing with the North Carolina Harp Ensemble.

2008  **5th Reunion: April 12-13, 2013**

CLASS REPRESENTATIVES

Sarah Marion
803.519.6504
swmarion@gmail.com

Johanna Whitmer
843.457.1373
jnwhitmer@gmail.com

SHANNON PETROSKI McKenzie passed the NCIDQ exam for interior designers. **LIZ KING Cooksey** completed her MEd degree from Lesley University in June 2012 and is teaching and coaching volleyball at Byrnes High School. **LINDSAY WALLER McKenzie** passed her nursing home administrator board exams and is dually licensed in the state of SC as an Assisted Living and Nursing Home Administrator. **JOSLYN EMMEL** is a violist with the Carolina Pops Orchestra in Greer, SC. **SARAH CAPPELMANN** completed her AuD degree from East Tennessee State University in May 2012 and is the district audiologist for Richland School District Two in Columbia, SC. **DESIREE GOMEZ** is a sixth grade science teacher at Boiling Springs Middle School in SC. **BELDA THOMAS** received her PharmD degree from Wingate University in May 2012 and is a Pharmacist at Walgreen's in Greenville, SC. **PARRISH ATKINSON** received her PharmD degree from the Medical University of South Carolina in May 2012. **JULIE BRIGHT** completed her MACC degree

from Gardner-Webb University in December 2011. **ERANGA GOONETILLEKE** received her master's in music degree from Southern Illinois University in August 2011. **JESSICA HYDER** completed her MAT from Converse in July 2012. **MARTHA BESS MILLER** received her MFA from Converse in May 2012. **TIFFANY OURS** completed her MA degree from the University of Phoenix in January 2011. **BAYE WILLIAMSON** completed her DVM degree from the University of Tennessee in May 2012. **JODI HYLTON** married Christopher Mark Gordon on March 17, 2012. **COLBY SANDERS** married Jonathan Stephen Blackwell on June 9, 2012. **SARAH WALTERS** married Zachariah James DeMeola on April 28, 2012. David and **ASHLEY CARRY Brumfield** welcomed daughter Averie Harper Brumfield on June 7, 2012. **STEPHANIE ANDERS** completed her MEd from Southern Wesleyan University in May 2012 and wed Byron McSwain on October 6, 2012. **LAUREN ELIZABETH POPE** married Holland Belue on June 9, 2012.

2009

Next Reunion:
2014

CLASS REPRESENTATIVES

Daniela Burrows
burrows.dmarie@yahoo.com
Facebook

Katie Mayes
803.983.4138
mayes.katie@gmail.com

Anna Sharp
als1224@gmail.com; Facebook

IN MEMORIAM

CASONYA LAKIA Boyce, MEd,
March 22, 2012

BETSY RUPPERT Selover lives in Wapakoneta, OH and teaches art, coaching cross-country and track at Indian Lake Middle School. **CARAH RANDALL** works at Folline Vision Center. **MARIAN BRYCE HANNA** graduated with a Master's of language and literacy and teaches second grade at Nursery Road Elementary School in Irmo, SC. **RACHEL HARMON Robles** has an internship with a

publishing company in Asheville, NC as an Editorial Assistant. **SADIE BARLOW** teaches Spanish and graduated with a MEd from Virginia Tech. **KELLY PANNOCCHIA** is a paralegal for Talley Law Firm in Spartanburg, SC. **JESSICA LOONEY** works in residence life at Merrimack College. **EOWYN MORROW** married Jared Melaragno on June 16, 2012. **HEATHER VICTORIA Price** married Jacob Holowach on August 11, 2012. Sean and **JULIE SEILS Ogren** welcomed daughter Maple Beverly Ogren on September 22, 2012. **SADIE BARLOW** received her MEd degree from Virginia Tech in June 2012. **SERENA DAWN Cox** and **TAYLOR HART** completed their MEd degrees from Converse in July 2012. **KATHERINE KLAMMER Bradberry** received her MEd in psychology from Clemson University in May 2012. **JESSICA REN Loving** completed her MMFT degree from Converse in July 2012. **ALEXANDRA MOORE** received her MAT degree from the University of West Florida in May 2012. **CHRISTINE WALKER Proctor** completed her EdS degree from Converse in July 2012. **REBECCA RAWLS** received her MFA degree from Wichita State University in 2012. **ELIZABETH DAWN Walsh** received her MEd degree from Converse in July 2012. **DANIELA BURROWS** married in October 2012. **MARYBETH SANDERS** completed her master's in sacred music from Perkins School of Theology-Southern Methodist in May 2012 and married Bradley Wilson on October 13, 2012.

2010

CLASS REPRESENTATIVES

Elizabeth Powell
312 N. Gay Street, Apt 204
Auburn, AL 36830
ejp0008@tigermail.auburn.edu

Ashley Shearsmith
921 Steadman Farms Drive
Inman, SC 29349
Cc_chick_10@windstream.net

SYMPATHY

Thomas Cook Bingham III,
August 4, 2012, grandfather of
MARY-SIDNEY RITCH

MORGAN ANDERSON moved to Atlanta, GA to teach secondary Spanish with Teach for America. **ANNA OWENS** is in Northern Ireland as a young adult volunteer through the Presbyterian Church (USA). **RACHEL DAUGHERTY** is in Beijing, China, teaching second grade. **KARISSA TERRY** and **COLLIN EMMEL** graduated with BSN degrees from Emory University and the University of SC, respectively. **KRISTA WILLIAMS** completed her MFA from SCAD and is an Interior Designer at Palmetto Interiors in Charleston, SC. **KAITLYN PRICE** received her MS degree from Syracuse University. **CAROLINE BURNETT** works for Staubli Corporation. **MIRIAM JACKSON** is the voice teacher for First Baptist North Spartanburg's school SCA. **ASHLEY SHEARSMITH, BRITNI COX, MELISSA RHODES, BRIE VON HAUZEN, ASHLEY GRIGSBY** and **MICHELE TATE** graduated from Converse with a master's degree. Ashley Shearsmith is employed at Byrnes Freshman Academy as a science teacher. Ashley Grigsby has a beautiful daughter, Myla. Michele Tate works as a Residential Life Coordinator at the SC Governor's School for the Arts and Humanities in Greenville, SC. **GWEN STEMBRIDGE** works for Young Audiences coordinating ArtWorks in Cleveland, OH. **MARY ENGLISH** is the Family Recruitment Coordinator for Habitat for Humanity in Charlotte, NC. **GINA MCBRIDE** moved to Atlanta, GA, to work in a family business, CTRAM Entertainment. **MARISA COLEMAN** married Benjamin Griswold on April 28, 2012. Marisa Griswold is Lead Therapist at Project Hope Foundation. **CARRIE JACKSON** and Riccardo Saxon were married on September 29, 2012. **NICOLE DUMOUCHEL** married Jeremy Watford on June 16, 2012. **CRISTIN FEDINA** married Adam Wood on May 25, 2012. **AMANDA STILLINGER** and Justin Knauff married on May 20, 2012. Congratulations to Amanda and Justin on the birth of their son Jackson! **KASIE STARNES** married Adam Auten on August 12, 2012. **ANNA LOCKAMY** married Allan Randall on December 15, 2012. **CHRISTINE RAMSEY** completed her MEd from Winthrop University.

2011

CLASS REPRESENTATIVES

Whitney Stonikinis
864.838.6668
wlstonikinis@gmail.com

Lydia Hope Williams
864.320.1902
insideview@bellsouth.net

SYMPATHY

Margaret Allen Tyson '76, March 22, 2012, mother of **ELIZABETH MORAN TYSON**

RACHEL LAUREN BEASLEY married Michael Craig Rhodes on December 18, 2010. **ZAREEN KHAN** received her master's in public affairs from the University of Texas at Austin in June 2012 and is a data integration specialist with Southwest Key Programs in Austin, TX. **APRIL LYNN TIMMS** completed her master's in education from Converse in July 2012. **HEATHER NICOLE NEFF** and Rick Loveday were married in April 2012.

2012

1st Reunion:
April 12-13, 2013

CLASS REPRESENTATIVES

Sarah Martin
843.230.3157
sarahmartinf@gmail.com

Spenser Robinson
828.400.8374
Srobinson161@yahoo.com

ANNA BURNS, MIYA EVANS-WALKER, and **ASHLEIGH TAYLOR MADILL** are admission counselors at Converse. **VALERIE THOMS** is the volleyball coach at Mauldin High School in Mauldin, SC. Congratulations to **CAROLINE ROBBINS** and Peter Bruce Wilson on their June 9, 2012 wedding. Congratulations to **JOYCE JIN**, who has been accepted to the Royal Academy of Music in London. Make plans now to attend our FIRST reunion on April 12-13, 2013!

100%
of the Class of 2012
history and politics majors
were accepted to graduate
school or secured notable
employment within three
months of graduation.

WANTED

Before Roxie
and before Richard,
there was Modine.
Help us build our
archives of her
story!



MODINE

Considered possibly armless and dangerously knowledgable
about student activities from the mid-1960s to the mid-1970s.

If you have any information about this student mascot, please contact
cindy.smith@converse.edu or call 864.596.9705.

No questions asked; all information, photos and late-night stories are confidential...
until the next issue....

EDWIN McCAIN

April 13, 2013
8:00 pm

Gates Open at 7 pm
Back Campus Rain or Shine

Ticket Information
Call 864.596.9725



\$10 - College Student
\$20 - General Admission
\$20 - All Day of Show

Free Parking
Two Forms of ID Required to Purchase Alcohol



SUMMER CAMPS & ACTIVITIES

converse.edu/summer-camps



- Opportunities for ALL AGES**
- Fine Arts Day Camp
 - Converse Kickers Soccer Camp
 - Premier Soccer Camp
 - Girls Basketball Day Camp
 - Converse Marlins Swim Team
 - Performance Power: Theatre & Art Day Camp
 - Young Writers' Workshop
 - Designer Genes: Exploring Genetic Counseling
 - Transition to Middle School, High School and College Workshops
 - Secrets to College Success: Insights to Take Anywhere
 - Summer School Courses



CONVERSE